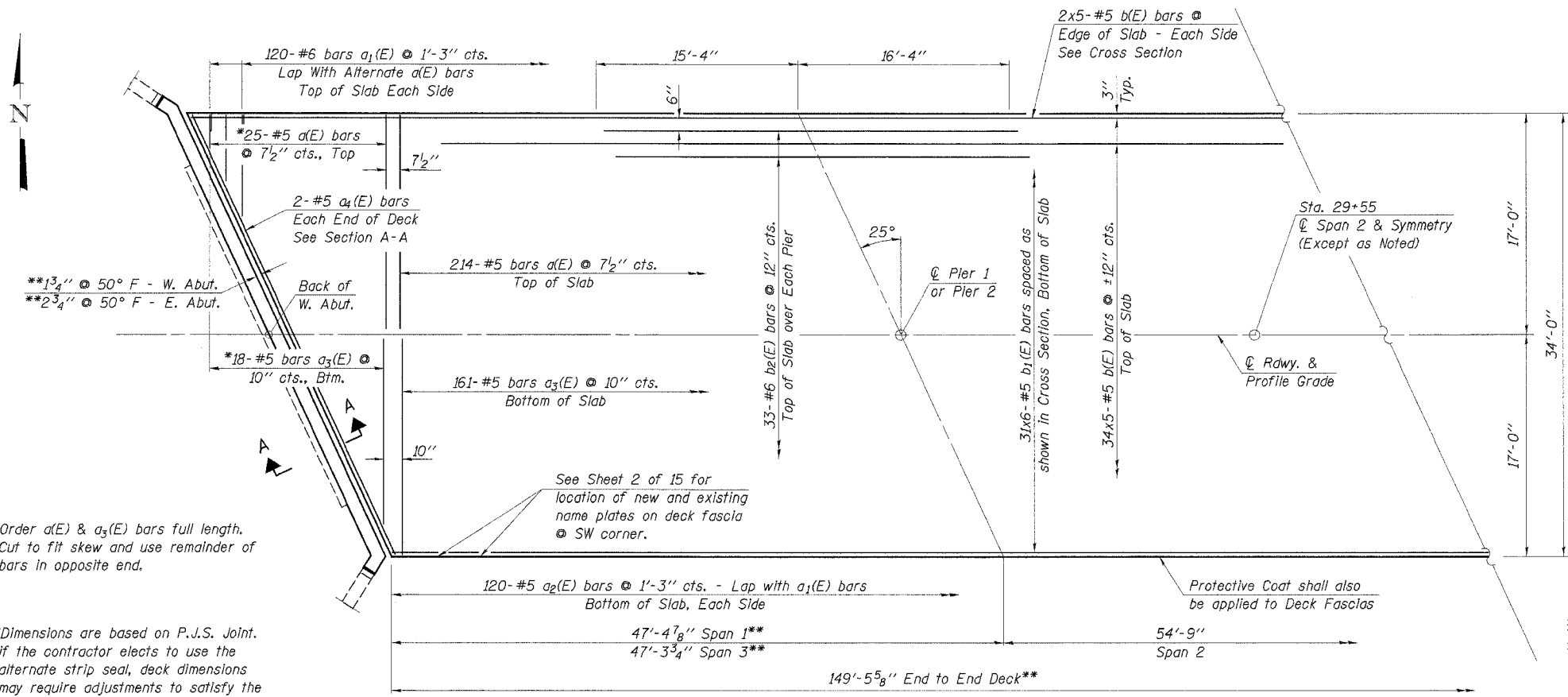


ROUTE NO.	SECTION	COUNTY	TOTAL SHEETS	SHEET NO.
C.H. 16	04-00209-01-BR	PIATT	18	9

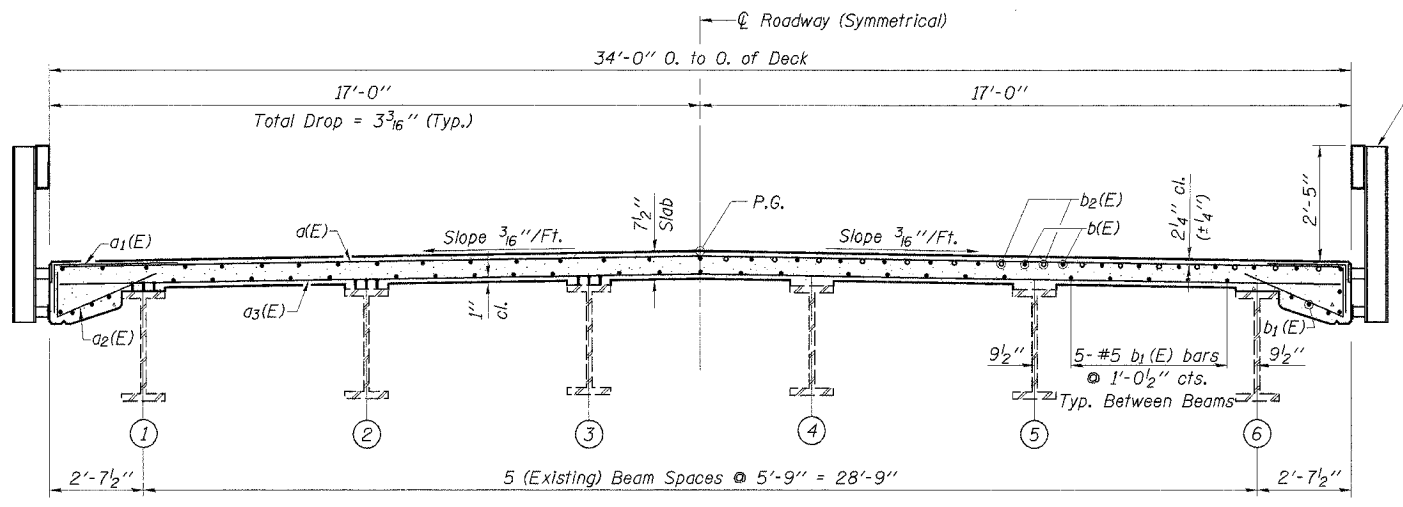
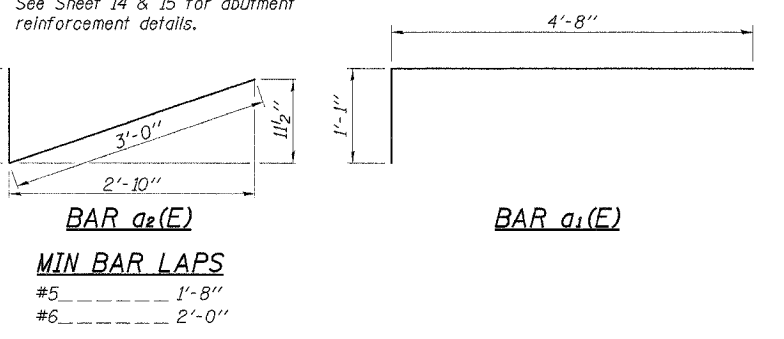
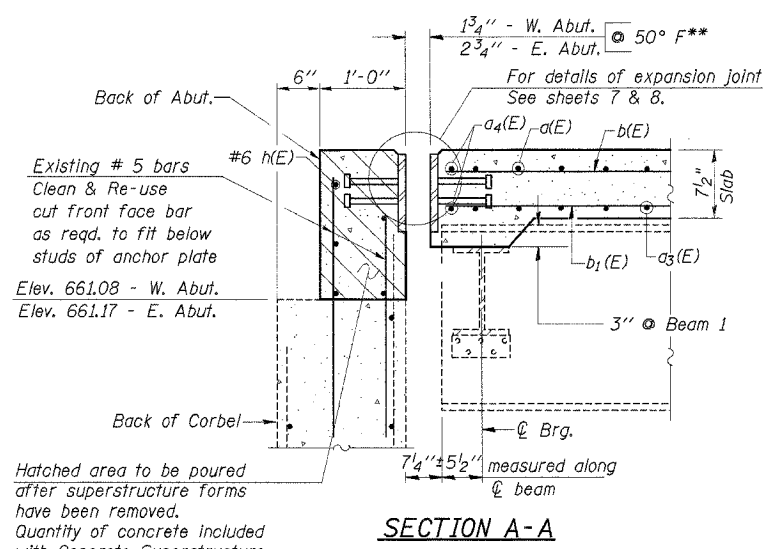
ILLINOIS  
 CONTRACT NO. 91339  
 Sheet 6 of 15



\*Order a(E) & a<sub>3</sub>(E) bars full length. Cut to fit skew and use remainder of bars in opposite end.

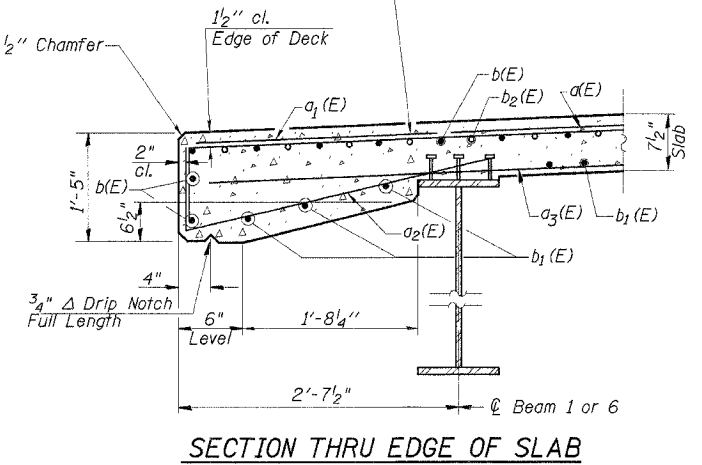
\*\*Dimensions are based on P.J.S. Joint. If the contractor elects to use the alternate strip seal, deck dimensions may require adjustments to satisfy the details on Sheet 8 of 15.

Note: Bars indicated thus 31x6-#5 indicates 31 lines of bars with 6 lengths per line.



Steel Railing, Type S1  
 See Sheet 9 of 15 for Details & Spacing.

Reinforcement bars in the top of deck shall be placed with a 1/2\"/>



**SUPERSTRUCTURE BILL OF MATERIAL**

Bar	No.	Size	Length	Shape
a (E)	239	#5	33'-8"	—
a <sub>1</sub> (E)	240	#6	5'-9"	—
a <sub>2</sub> (E)	240	#5	4'-1"	—
a <sub>3</sub> (E)	179	#5	33'-6"	—
a <sub>4</sub> (E)	4	#5	37'-2"	—
b (E)	190	#5	31'-2"	—
b <sub>1</sub> (E)	186	#5	26'-3"	—
b <sub>2</sub> (E)	66	#6	31'-8"	—
Protective Coat		Sq. Yd.	612	
Conc. Superstructure		Cu. Yd.	140.9	
Reinforcement Bars, Epoxy Coated		Lbs.	32,310	
Bridge Deck Grooving		Sq. Yd.	565	

Reinforcement Bars designated (E) shall be epoxy coated.

REHABILITATION PROJECT

DESIGNED	A.R.K.
CHECKED	S.F.M.
DRAWN	S.A.P.
CHECKED	F.J.S.

**CROSS SECTION**  
 (Looking East)

**SUPERSTRUCTURE**  
 C.H. 16 OVER LAKE FORK  
 SECTION 04-00209-01-BR  
 PIATT COUNTY  
 STATION 29+55