

ROUTE NO.	SECTION	COUNTY	TOTAL SHEETS	SHEET NO.
C.H. 16	04-00209-01-BR	PIATT	18	11
ILLINOIS				

CONTRACT NO. 91339
Sheet 8 of 15

GENERAL NOTES

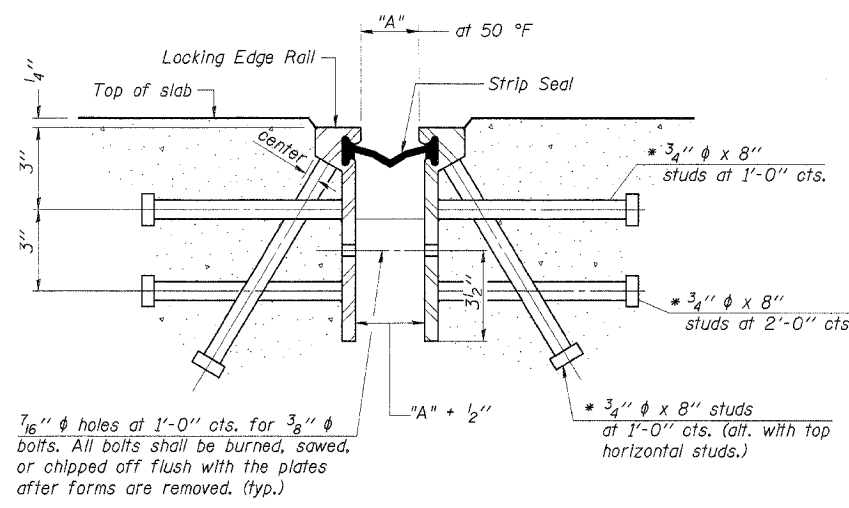
The strip seal shall be made continuous and shall have a minimum thickness of 1/4". The configuration of the strip seal shall match the configuration of the Locking Edge Rails.

The height and thickness of the Locking Edge Rails shown are minimum dimensions. The actual configuration of the Locking Edge Rails and matching strip seal may vary from manufacturer to manufacturer. Flanged edge rails will not be allowed.

Locking Edge Rails may be spliced at slope discontinuities and stage construction joints.

The manufacturer's recommended installation methods shall be followed.

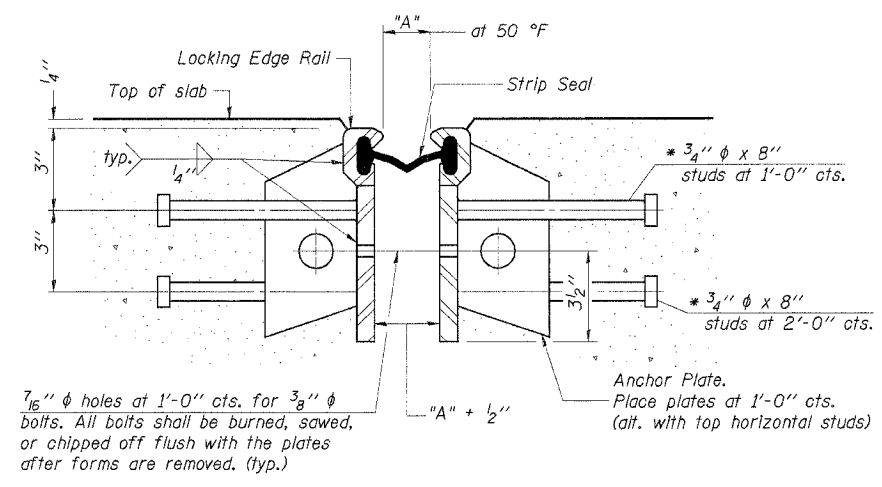
The joint opening and deck dimensions detailed on the superstructure are based on a preformed joint seal. If the contractor elects to use the alternate strip seal joint, the opening and deck dimensions shall be modified according to the dimensions detailed on this sheet. Required modifications shall be made at no additional cost.



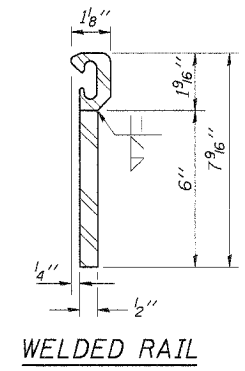
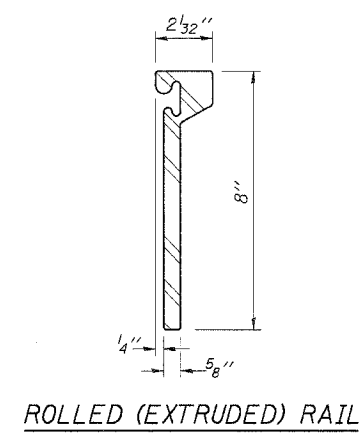
SECTION THRU ROLLED RAIL EXP. JOINT
(91 Studs/ft Required)

Required Strip Seal rated movement	"A"
1"	1 1/8"
2"	1 3/4"

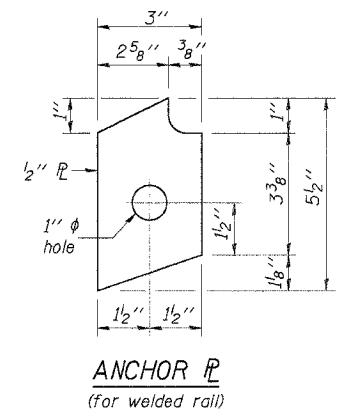
* Granular or solid flux filled headed studs conforming to Article 1006.32 of the Std. Specs., automatically end welded.



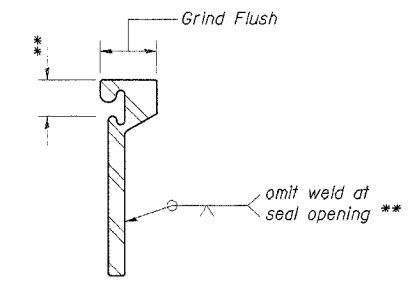
SECTION THRU WELDED RAIL EXP. JOINT
(55 Studs/ft Required)
(36 Anchor ft/ft Required)



ROLLED (EXTRUDED) RAIL **WELDED RAIL**



ANCHOR PLATE
(for welded rail)



LOCKING EDGE RAIL SPLICE
The inside of the locking edge rail groove shall be free of weld residue.

LOCKING EDGE RAILS

REHABILITATION PROJECT

DESIGNED	A.R.K.
CHECKED	S.F.M.
DRAWN	S.A.P.
CHECKED	F.J.S.

(Sheet 2 of 2)

**BRIDGE JOINT SYSTEM - EXPANSION
(ALTERNATE-STRIP SEAL)**
C.H. 16 OVER LAKE FORK
SECTION 04-00209-01-BR
PIATT COUNTY
STATION 29+55

4440 ASH GROVE SPRINGFIELD, IL 62711 (217) 793-8600 oastno@famvid.com	OZYURT AND STONE, INC. CONSULTING ENGINEERS	JOB NO.: 0418 FILE: 0418JOINT2.DGN DATE: 05-23-05
--	---	---