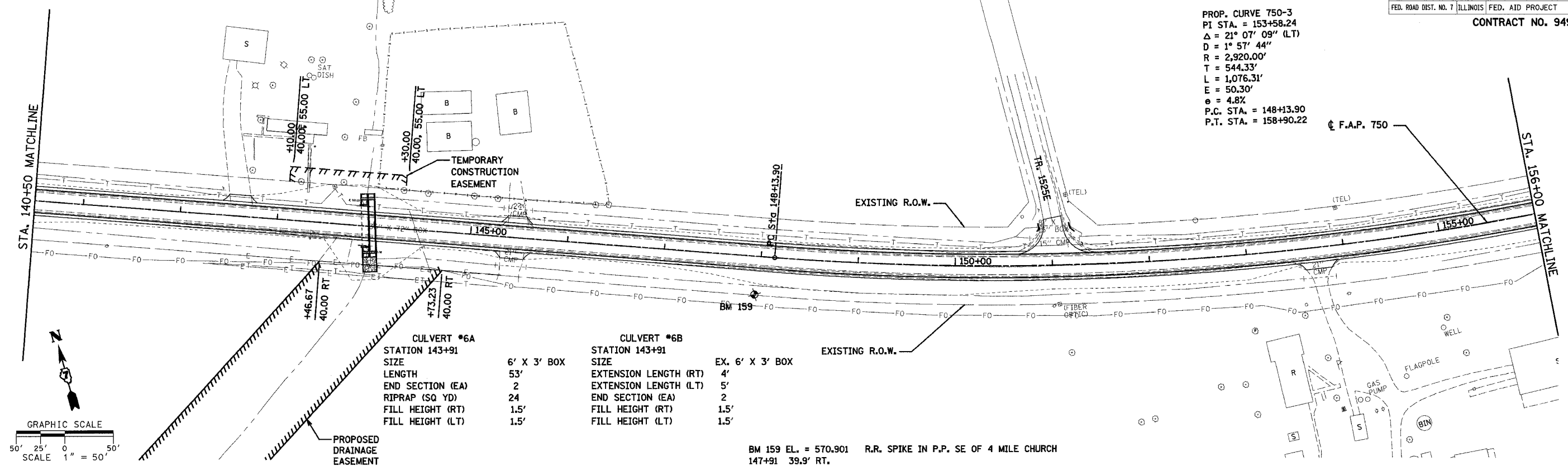


F.A.P. R.F.E.	SECTION	COUNTY	TOTAL SHEETS	SHEET NO.
750	(112,113) Y, WRS	FAYETTE	178	16
STA. 140+50		TO STA. 172+00		
FED. ROAD DIST. NO. 7 ILLINOIS FED. AID PROJECT				

CONTRACT NO. 94927

PROP. CURVE 750-3
 PI STA. = 153+58.24
 $\Delta = 21^\circ 07' 09''$ (LT)
 $D = 1^\circ 57' 44''$
 $R = 2,920.00'$
 $T = 544.33'$
 $L = 1,076.31'$
 $E = 50.30'$
 $e = 4.8\%$
 P.C. STA. = 148+13.90
 P.T. STA. = 158+90.22

PLAN	SURVEYED	DATE
	BY	
	NOTED	
	PL. OF. MAY CHECKED	
	NO. OF	
	ADD. FILE NAME	



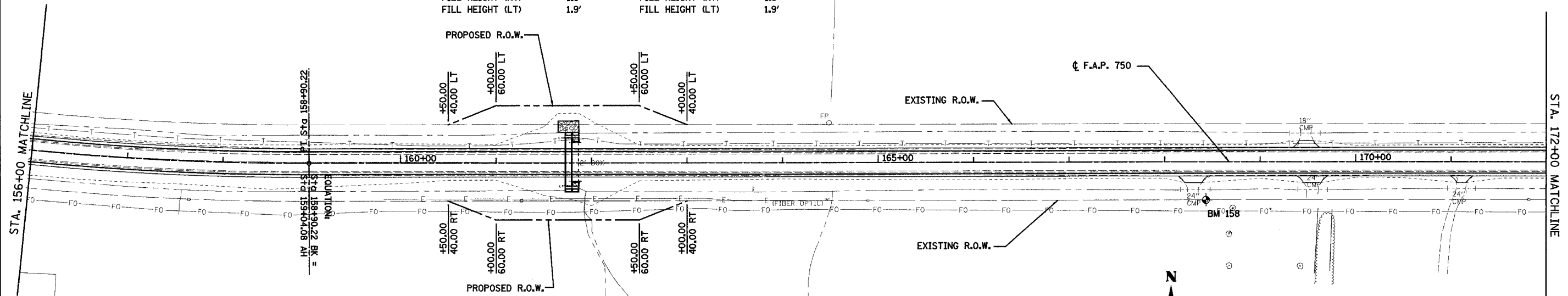
CULVERT #6A		CULVERT #6B	
STATION	143+91	STATION	143+91
SIZE	6' X 3' BOX	SIZE	EX. 6' X 3' BOX
LENGTH	53'	EXTENSION LENGTH (RT)	4'
END SECTION (EA)	2	EXTENSION LENGTH (LT)	5'
RIPRAP (SQ YD)	24	END SECTION (EA)	2
FILL HEIGHT (RT)	1.5'	FILL HEIGHT (RT)	1.5'
FILL HEIGHT (LT)	1.5'	FILL HEIGHT (LT)	1.5'

BM 159 EL. = 570.901 R.R. SPIKE IN P.P. SE OF 4 MILE CHURCH
 147+91 39.9' RT.

PLAN	SURVEYED	DATE
	BY	
	NOTED	
	PL. OF. MAY CHECKED	
	NO. OF	
	ADD. FILE NAME	

BM 158 EL. = 576.778 R.R. SPIKE IN P.P. SE QUAD. IL 185 & F.E.
 168+44 40.6' RT.

CULVERT #7A		CULVERT #7B	
STATION	161+83	STATION	161+83
SIZE	6' X 2' BOX	SIZE	EX. 6' X 2' BOX
LENGTH	51'	EXTENSION LENGTH (RT)	4'
END SECTION (EA)	2	EXTENSION LENGTH (LT)	3.6'
RIPRAP (SQ YD)	29	END SECTION (EA)	2
FILL HEIGHT (RT)	1.8'	FILL HEIGHT (RT)	1.8'
FILL HEIGHT (LT)	1.9'	FILL HEIGHT (LT)	1.9'



REVISIONS	
NAME	DATE
Kdg	3/02/05

ILLINOIS DEPARTMENT OF TRANSPORTATION
 PLAN SHEETS
 SHEET 2 OF 10
 F.A.P. 750 (IL. RTE. 185)
 SECTION 112,113 - FAYETTE CO.

SCALE: 1"=50'
 DATE: JULY 22, 2005
 DRAWN BY: CRO
 CHECKED BY: RCY

J:\2003\030045\0002\civil\phase 2\kdg\dmr\p2-dp150-2.dgn 3/31/02 PM 8/1/2005