

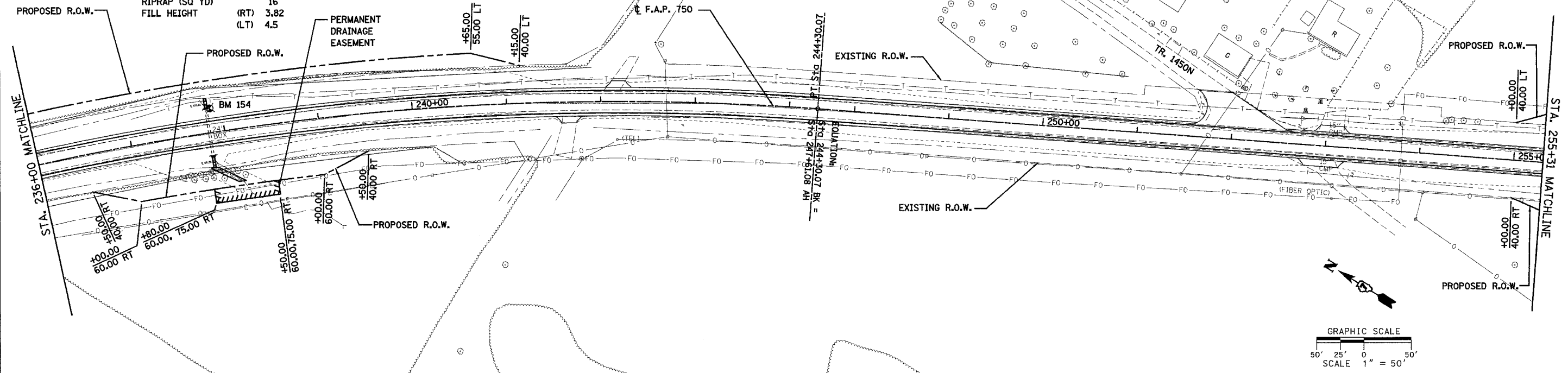
BM 154 EL. = 576.211 CHISELED SQUARE ON NE HEADWALL OF R.C.B.C.
237+84 25.5' LT.

CULVERT #10
STATION 237+84
SIZE 2' X 2' BOX
EXTENSION LENGTH (RT) 6'
EXTENSION LENGTH (LT) 4'
END SECTION (EA) 2
RIPRAP (SQ YD) 16
FILL HEIGHT (RT) 3.82
(LT) 4.5

F.A.P. RTE.	SECTION	COUNTY	TOTAL SHEETS	SHEET NO.
750	(112,113) Y, WRS	FAYETTE	178	19
STA. 236+00	TO STA. 271+31			
FED. ROAD DIST. NO. 7		ILLINOIS	FED. AID PROJECT	

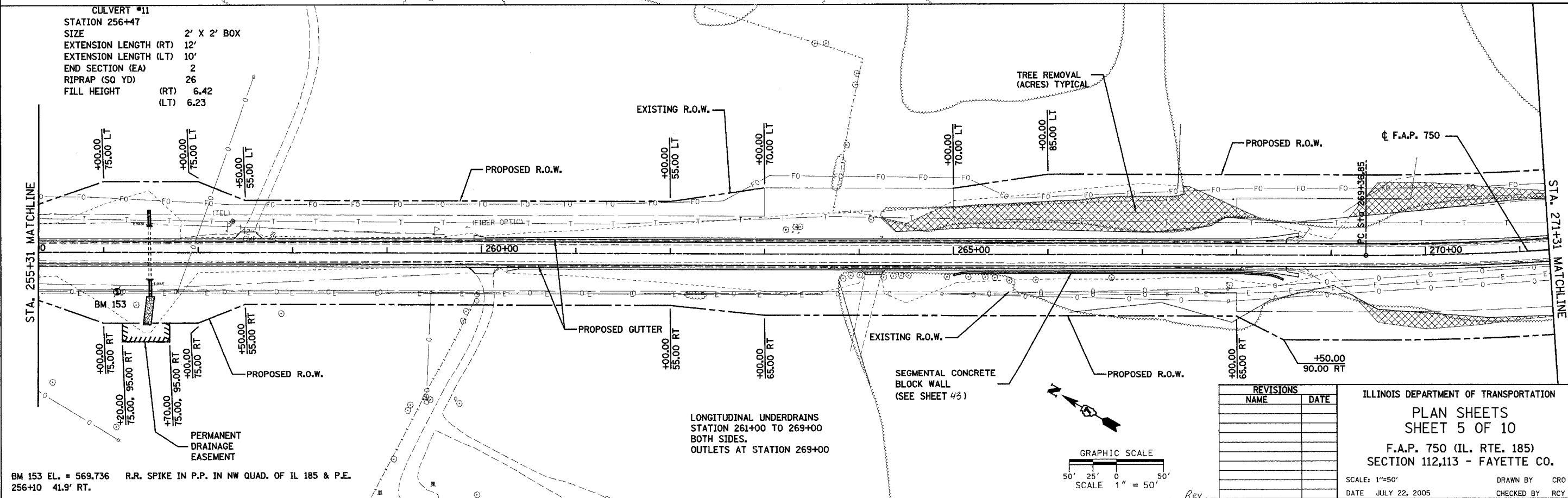
CONTRACT NO. 94927

PLAN	STARTED	DATE
NO.	BY	
	DATE	
	BY	
	DATE	
	BY	
	DATE	



CULVERT #11
STATION 256+47
SIZE 2' X 2' BOX
EXTENSION LENGTH (RT) 12'
EXTENSION LENGTH (LT) 10'
END SECTION (EA) 2
RIPRAP (SQ YD) 26
FILL HEIGHT (RT) 6.42
(LT) 6.23

PLAN	STARTED	DATE
NO.	BY	
	DATE	
	BY	
	DATE	
	BY	
	DATE	



BM 153 EL. = 569.736 R.R. SPIKE IN P.P. IN NW QUAD. OF IL 185 & P.E.
256+10 41.9' RT.

LONGITUDINAL UNDERDRAINS
STATION 261+00 TO 269+00
BOTH SIDES.
OUTLETS AT STATION 269+00

REVISIONS	
NAME	DATE

ILLINOIS DEPARTMENT OF TRANSPORTATION
PLAN SHEETS
SHEET 5 OF 10
F.A.P. 750 (IL. RTE. 185)
SECTION 112,113 - FAYETTE CO.
SCALE: 1"=50'
DATE: JULY 22, 2005
DRAWN BY: CRO
CHECKED BY: RCY

J:\2003\030045\0002\civil\phase 2\kg\gdn\p2_dp150_5.dgn 3/31/04 PM 8/1/2005