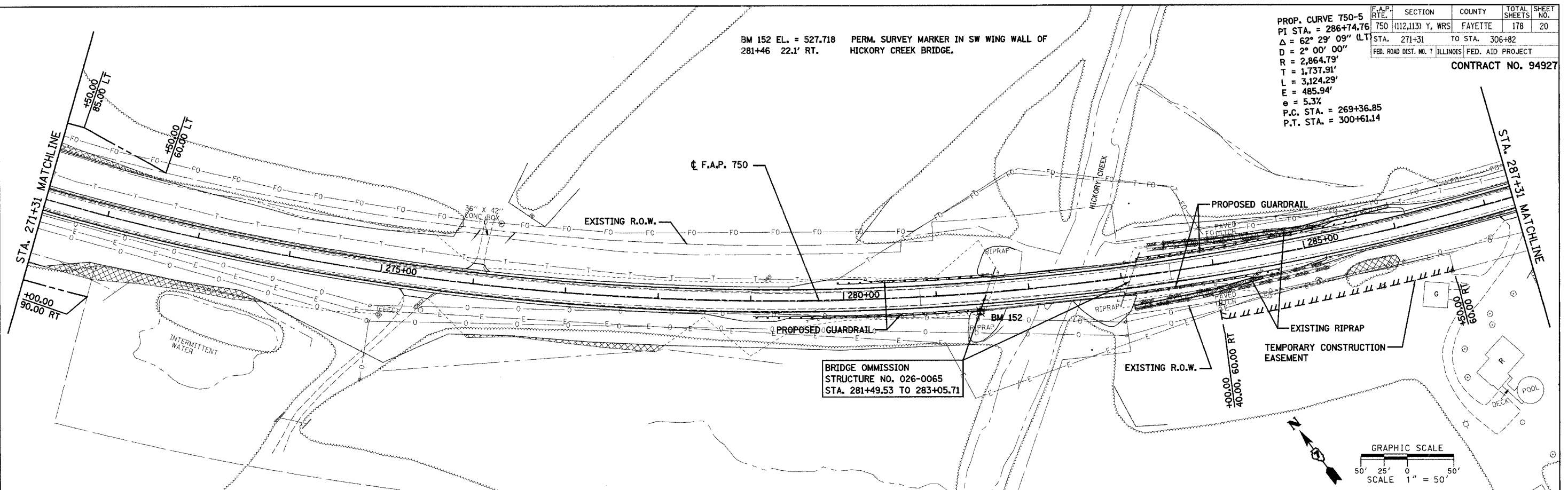


F.A.P. RTE.	SECTION	COUNTY	TOTAL SHEETS	SHEET NO.
750	(112,113) Y, WRS	FAYETTE	178	20
STA. 271+31 TO STA. 306+82		FED. ROAD DIST. NO. 7 ILLINOIS FED. AID PROJECT		

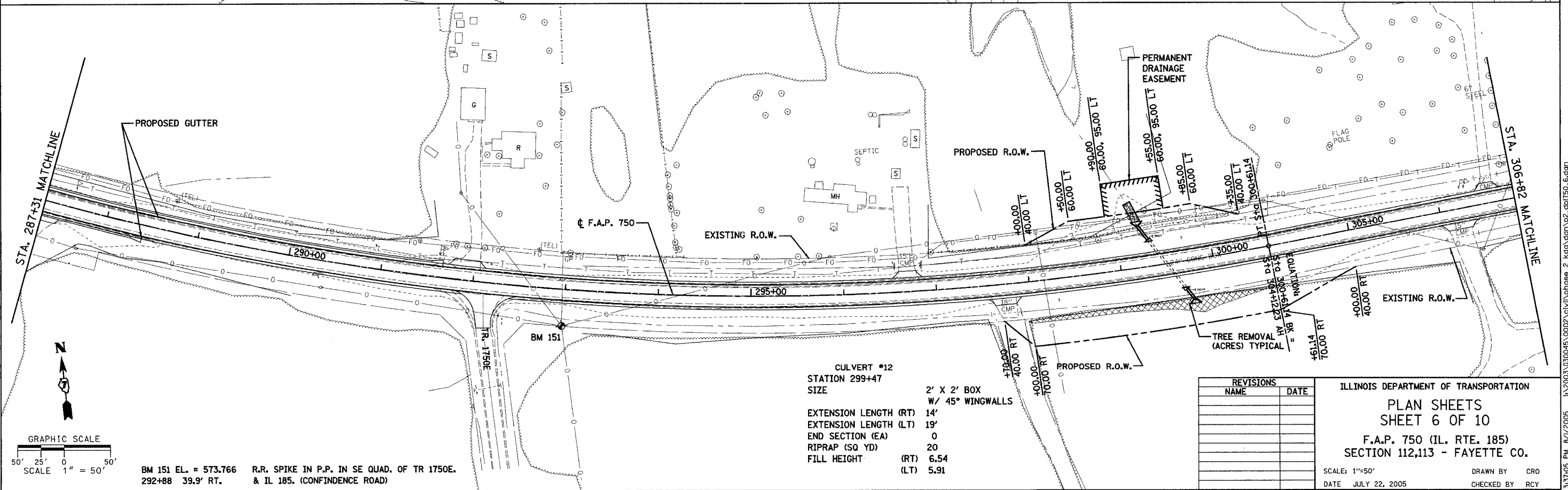
CONTRACT NO. 94927

PROP. CURVE 750-5
 PI STA. = 286+74.76
 $\Delta = 62^\circ 29' 09''$ (LT)
 $D = 2^\circ 00' 00''$
 $R = 2,864.79'$
 $T = 1,737.91'$
 $L = 3,124.29'$
 $E = 485.94'$
 $e = 5.3\%$
 P.C. STA. = 269+36.85
 P.T. STA. = 300+61.14

BM 152 EL. = 527.718 PERM. SURVEY MARKER IN SW WING WALL OF HICKORY CREEK BRIDGE.
 281+46 22.1' RT.



DATE	
BY	
PLAN	SURVEYED
	PLOTTED
	CHECKED
	NO. OF MAY CHECKED
	CADD FILE NAME
	NO.



CULVERT #12
 STATION 299+47
 SIZE 2' X 2' BOX
 W/ 45° WINGWALLS
 EXTENSION LENGTH (RT) 14'
 EXTENSION LENGTH (LT) 19'
 END SECTION (EA) 0
 RIPRAP (SQ YD) 20
 FILL HEIGHT (RT) 6.54
 (LT) 5.91

BM 151 EL. = 573.766 R.R. SPIKE IN P.P. IN SE QUAD. OF TR 1750E.
 292+88 39.9' RT. & IL 185. (CONFIDENCE ROAD)

REVISIONS	
NAME	DATE

ILLINOIS DEPARTMENT OF TRANSPORTATION
 PLAN SHEETS
 SHEET 6 OF 10
 F.A.P. 750 (IL. RTE. 185)
 SECTION 112,113 - FAYETTE CO.
 SCALE: 1"=50'
 DATE JULY 22, 2005
 DRAWN BY CRO
 CHECKED BY RCY

3/3/2005 PM 8/1/2005 J:\2003\030045\0002\civil\phase 2 kag\ddm\p2.dwg\150_6.dgn