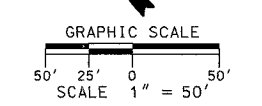
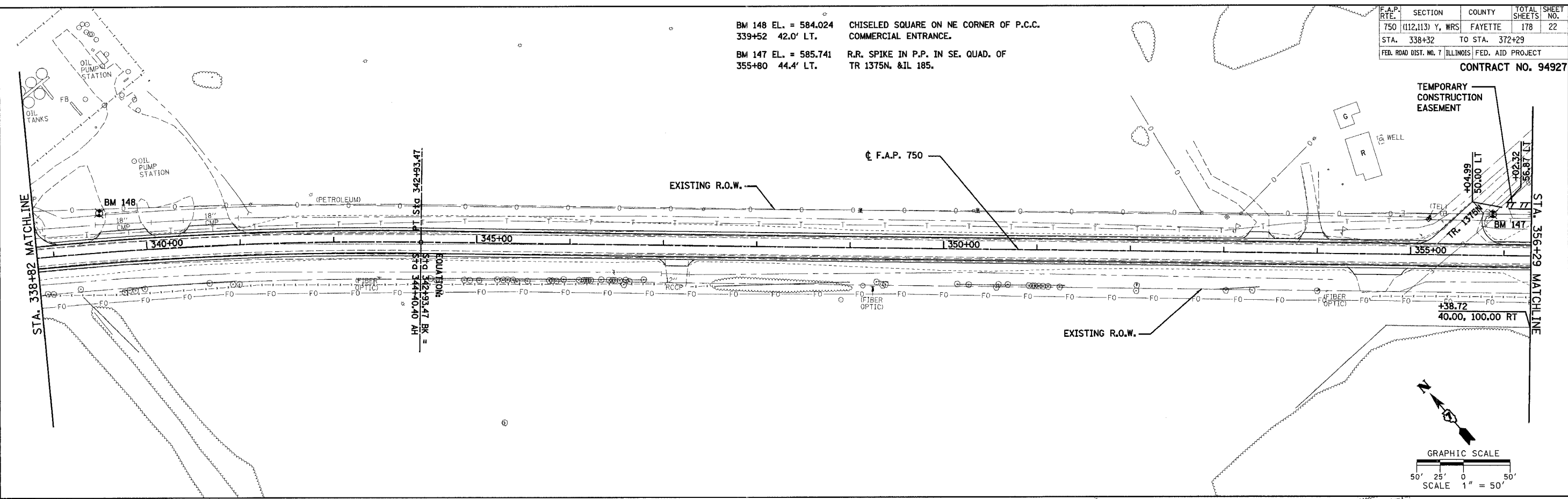


|                       |                  |                  |              |           |
|-----------------------|------------------|------------------|--------------|-----------|
| F.A.P. RTE.           | SECTION          | COUNTY           | TOTAL SHEETS | SHEET NO. |
| 750                   | (112,113) Y, WRS | FAYETTE          | 178          | 22        |
| STA. 338+32           | TO STA. 372+29   |                  |              |           |
| FED. ROAD DIST. NO. 7 | ILLINOIS         | FED. AID PROJECT |              |           |

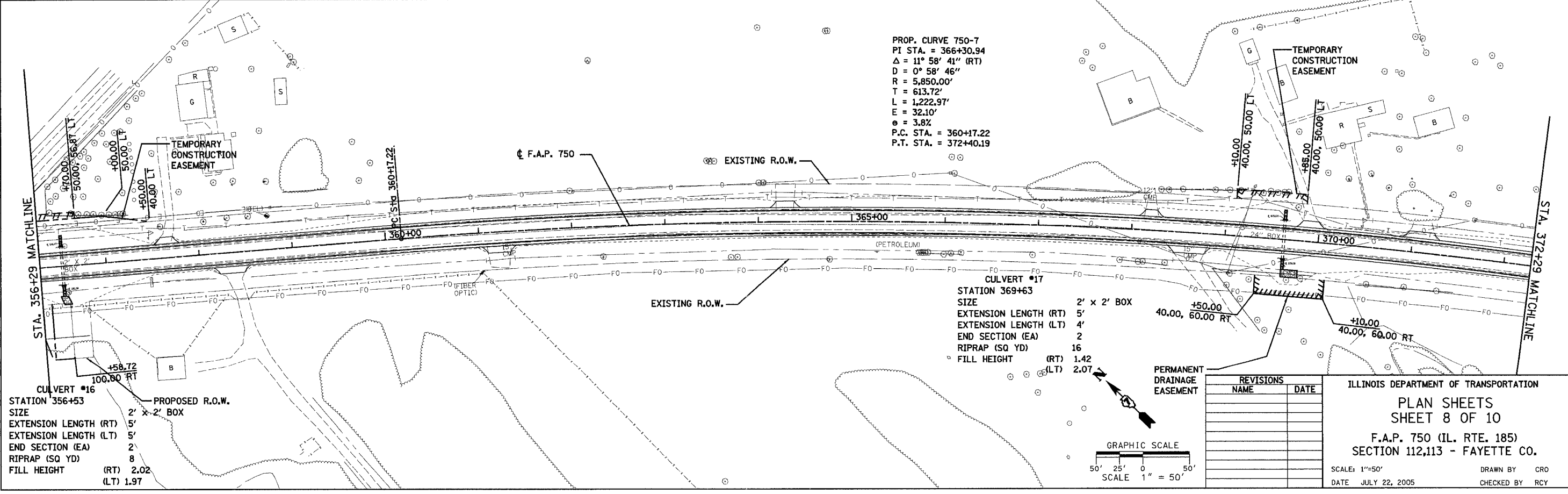
CONTRACT NO. 94927

BM 148 EL. = 584.024 CHISELED SQUARE ON NE CORNER OF P.C.C. COMMERCIAL ENTRANCE.  
 339+52 42.0' LT.  
 BM 147 EL. = 585.741 R.R. SPIKE IN P.P. IN SE. QUAD. OF TR 1375N, & 1L 185.  
 355+80 44.4' LT.

|               |    |
|---------------|----|
| DATE          | BY |
|               |    |
| PLAN SURVEYED |    |
|               |    |
|               |    |
|               |    |



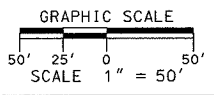
|               |    |
|---------------|----|
| DATE          | BY |
|               |    |
| PLAN SURVEYED |    |
|               |    |
|               |    |
|               |    |



PROP. CURVE 750-7  
 PI STA. = 366+30.94  
 $\Delta = 11^\circ 58' 41''$  (RT)  
 $D = 0^\circ 58' 46''$   
 $R = 5,850.00'$   
 $T = 613.72'$   
 $L = 1,222.97'$   
 $E = 32.10'$   
 $e = 3.8\%$   
 P.C. STA. = 360+17.22  
 P.T. STA. = 372+40.19

CULVERT #16  
 STATION 356+53  
 SIZE 2' x 2' BOX  
 EXTENSION LENGTH (RT) 5'  
 EXTENSION LENGTH (LT) 5'  
 END SECTION (EA) 2'  
 RIPRAP (SQ YD) 8  
 FILL HEIGHT (RT) 2.02 (LT) 1.97

CULVERT #17  
 STATION 369+63  
 SIZE 2' x 2' BOX  
 EXTENSION LENGTH (RT) 5'  
 EXTENSION LENGTH (LT) 4'  
 END SECTION (EA) 2'  
 RIPRAP (SQ YD) 16  
 FILL HEIGHT (RT) 1.42 (LT) 2.07



| REVISIONS | NAME | DATE |
|-----------|------|------|
|           |      |      |
|           |      |      |
|           |      |      |
|           |      |      |

ILLINOIS DEPARTMENT OF TRANSPORTATION  
 PLAN SHEETS  
 SHEET 8 OF 10  
 F.A.P. 750 (IL. RTE. 185)  
 SECTION 112,113 - FAYETTE CO.  
 SCALE: 1" = 50'  
 DATE JULY 22, 2005  
 DRAWN BY CRO  
 CHECKED BY RCY

J:\2\2003\030045\0002\civil\phase 2\kg\dm\p2.dpi\50\_8.dgn 3/31/07 PM 8/1/2005