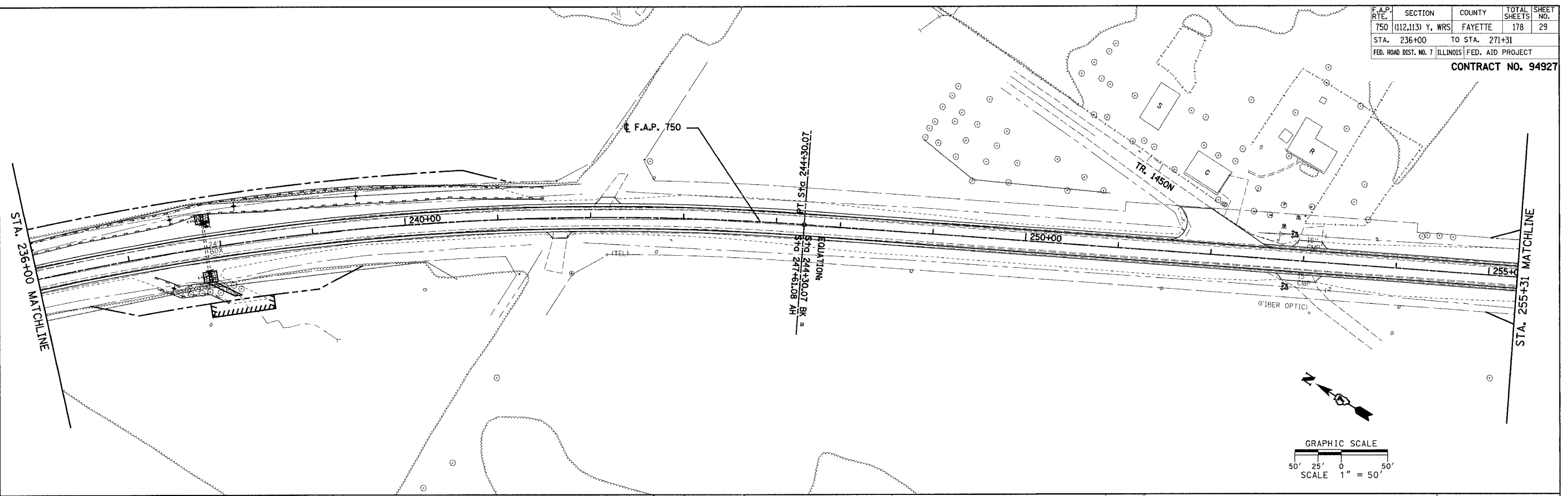


F.A.P. RTE.	SECTION	COUNTY	TOTAL SHEETS	SHEET NO.
750	(112,113) Y, WRS	FAYETTE	178	29
STA. 236+00	TO STA. 271+31			
FED. ROAD DIST. NO. 7	ILLINOIS	FED. AID PROJECT		

**CONTRACT NO. 94927**

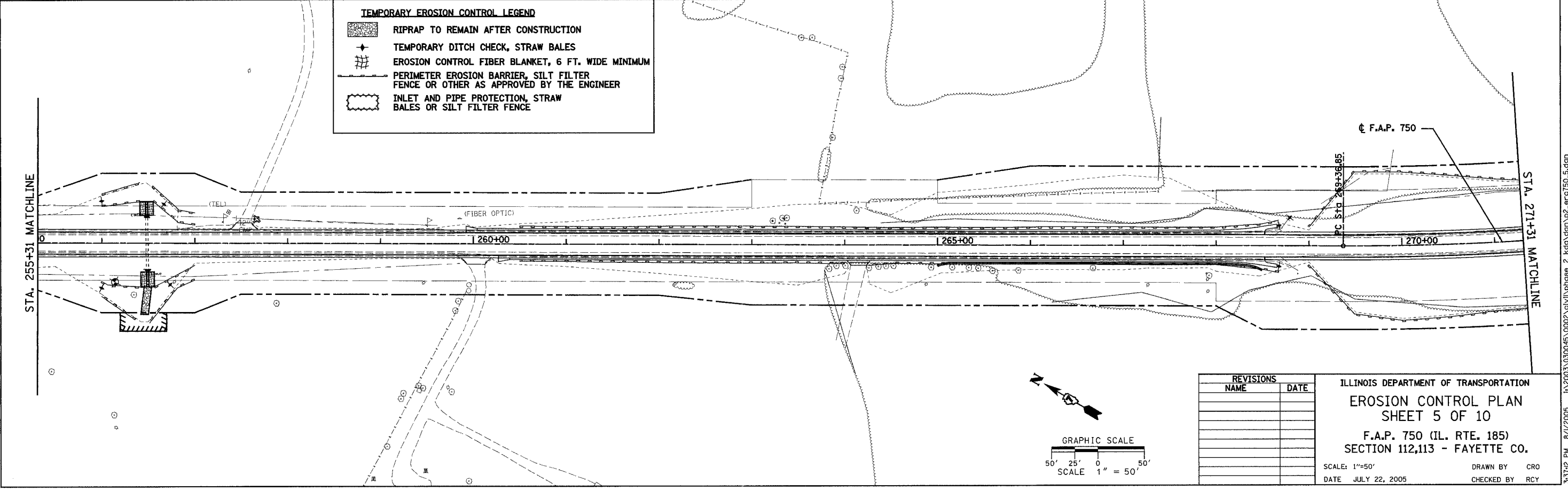
PLAN	SURVEYED	DATE
	BY	
	PLOTTED	
	BY	
	NOTE BOOK	
	NO. OF WAYS CHECKED	
	ADD FILE NAME	



**TEMPORARY EROSION CONTROL LEGEND**

	RIPRAP TO REMAIN AFTER CONSTRUCTION
	TEMPORARY DITCH CHECK, STRAW BALES
	EROSION CONTROL FIBER BLANKET, 6 FT. WIDE MINIMUM
	PERIMETER EROSION BARRIER, SILT FILTER FENCE OR OTHER AS APPROVED BY THE ENGINEER
	INLET AND PIPE PROTECTION, STRAW BALES OR SILT FILTER FENCE

PLAN	SURVEYED	DATE
	BY	
	PLOTTED	
	BY	
	NOTE BOOK	
	NO. OF WAYS CHECKED	
	ADD FILE NAME	



REVISIONS	
NAME	DATE

ILLINOIS DEPARTMENT OF TRANSPORTATION  
**EROSION CONTROL PLAN**  
**SHEET 5 OF 10**  
 F.A.P. 750 (IL. RTE. 185)  
 SECTION 112,113 - FAYETTE CO.  
 SCALE: 1"=50'  
 DATE JULY 22, 2005  
 DRAWN BY CRO  
 CHECKED BY RCY

J:\2003\030045\0002\civil\phase 2\kdg\vgm\p2\_erc750\_5.dgn 8/7/2005 3:37:22 PM