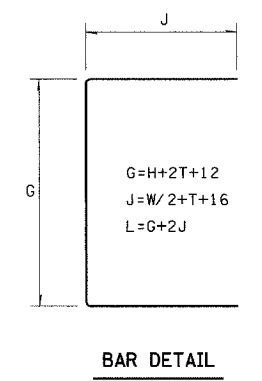
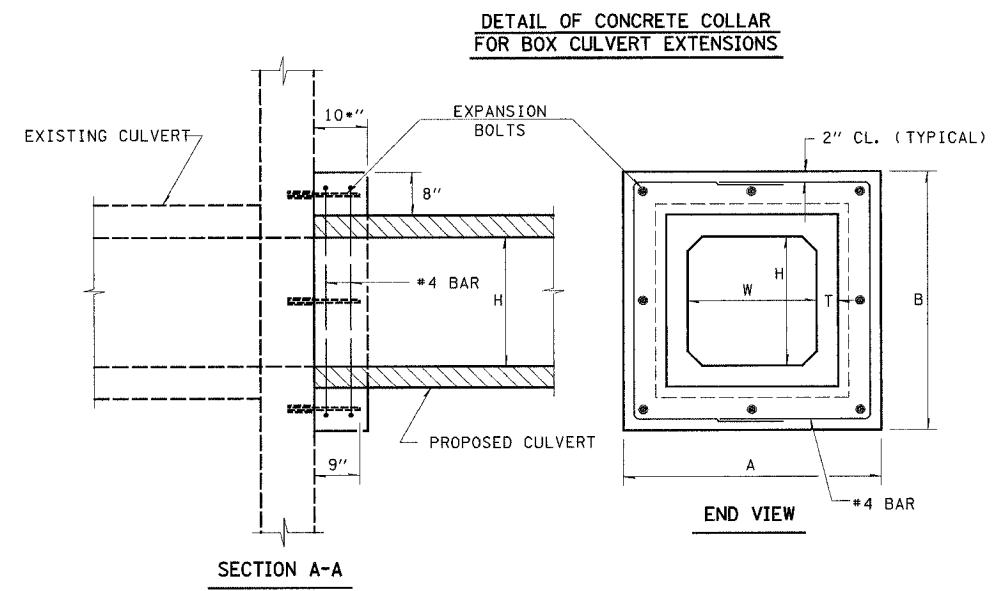


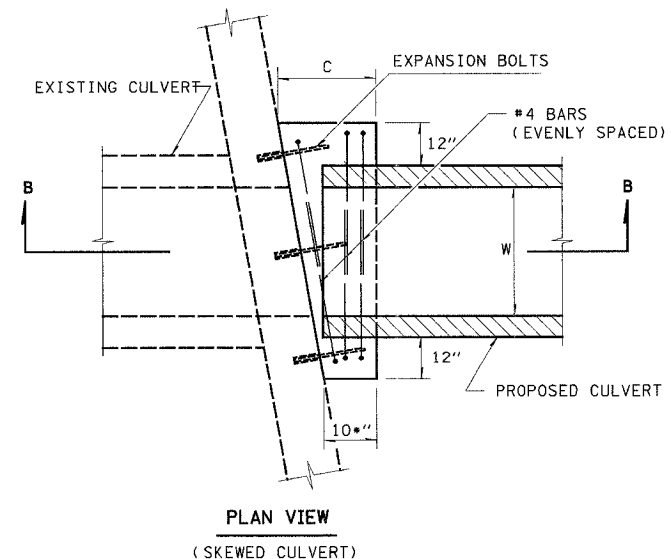
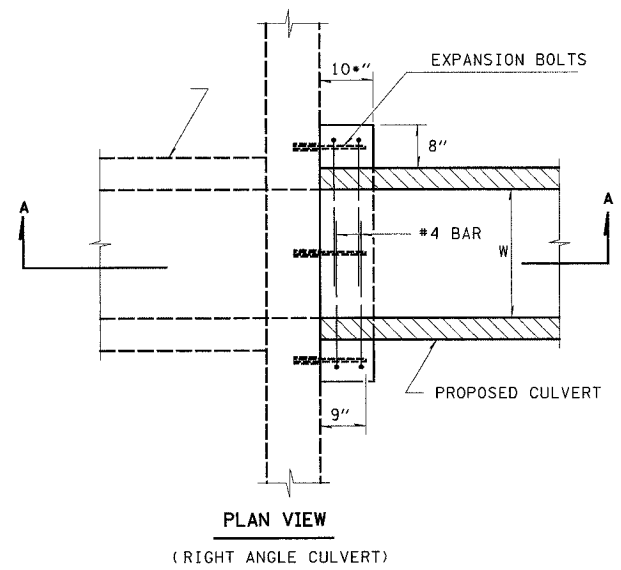
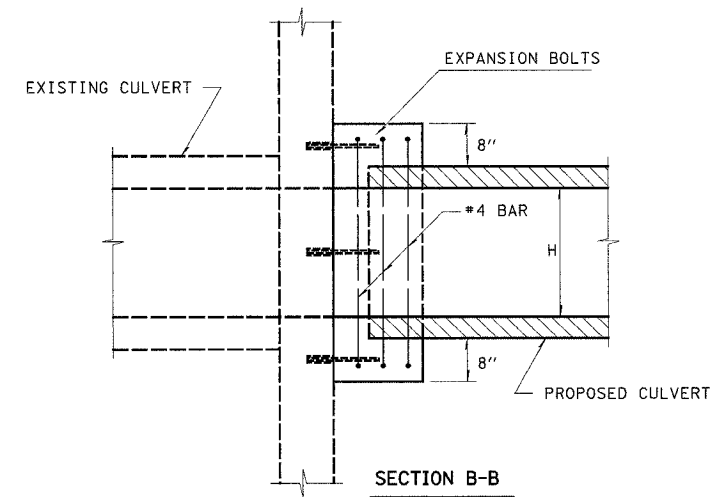
F.A.P. SECTION	COUNTY	TOTAL SHEETS	SHEET NO.
750 (112,113) Y, WRS	FAYETTE	178	39
STA.	TO STA.		
FED. ROAD DIST. NO. 7	ILLINOIS	FED. AID PROJECT	

CONTRACT NO. 94927

SIDE	STATION	DIMENSIONS						REINFORCEMENT BARS				
		A	B	C	W	H	T	G	J	L	NUMBER BARS	POUND
RT.	143+92.45	102	66	19.8	72	36	7	62	59	180	6	721
LT.	143+88.69	102	66	19.8	72	36	7	62	59	180	6	721
RT.	161+83.46	54	102	10	24	72	7	98	35	168	4	449
LT.	161+83.56	54	102	10	24	72	7	98	35	168	4	449
RT.	212+80.72	0	0	0	0	0	0	0	0	0	0	•OMITTED•
LT.	212+80.75	0	0	0	0	0	0	0	0	0	0	•OMITTED•
RT.	237+84.05	48	48	10	24	24	4	44	32	108	4	288.6
LT.	237+84.04	48	48	10	24	24	4	44	32	108	4	288.6
RT.	256+49.20	48	48	10	24	24	4	44	32	108	4	288.6
LT.	256+48.22	48	48	10	24	24	4	44	32	108	4	288.6
RT.	299+66.02	48	48	46.8	24	24	4	44	32	108	6	432.9
LT.	299+34.51	48	48	45.6	24	24	4	44	32	108	6	432.9
RT.	314+34.03	48	48	10	24	24	4	44	32	108	4	288.6
LT.	314+34.12	48	48	10	24	24	4	44	32	108	4	288.6
RT.	324+63.45	48	48	10	24	24	4	44	32	108	4	288.6
LT.	324+64.20	48	48	10	24	24	4	44	32	108	4	288.6
RT.	327+29.39	48	48	73.2	24	24	4	44	32	108	6	432.9
LT.	326+61.91	48	48	75.6	24	24	4	44	32	108	6	432.9
RT.	356+53.24	48	48	10	24	24	4	44	32	108	4	288.6
LT.	356+53.08	48	48	10	24	24	4	44	32	108	4	288.6
RT.	369+63.35	48	48	10	24	24	4	44	32	108	4	288.6
LT.	369+63.13	48	48	10	24	24	4	44	32	108	4	288.6
RT.	388+30.57	102	102	10	72	72	7	98	59	216	4	577.2
LT.	388+31.75	102	102	10	72	72	7	98	59	216	4	577.2
RT.	401+09.22	74	98	10	48	72	5	94	45	184	4	491.6
LT.	401+09.48	74	98	11	48	72	5	94	45	184	6	737.5
RT.	410+25.00	0	0	0	0	0	0	0	0	0	0	•OMITTED•
LT.	410+13.08	0	0	0	0	0	0	0	0	0	0	•OMITTED•
RT.	419+52.00	48	48	72	24	24	4	44	32	108	6	432.9
LT.	418+85.29	48	48	72	24	24	4	44	32	108	6	432.9
RT.	424+10.56	48	48	10	24	24	4	44	32	108	4	288.6
LT.	424+10.44	48	48	10	24	24	4	44	32	108	4	288.6
RT.	427+27.98	48	48	46.8	24	24	4	44	32	108	6	432.9
LT.	427+70.79	48	48	42	24	24	4	44	32	108	6	432.9
RT.	428+34.65	48	48	22.8	24	24	4	44	32	108	6	432.9
LT.	428+26.36	48	48	13.2	24	24	4	44	32	108	6	432.9
RT.	430+92.27	48	48	55.2	24	24	4	44	32	108	6	432.9
LT.	430+22.76	48	48	56.4	24	24	4	44	32	108	6	432.9
TOTAL											146	13959



NOTE: EXPANSION BOLTS SHALL CONSIST OF SELF-DRILLING EXPANSION SHIELDS AND HOOKED BOLTS. HOOKED BOLTS SHALL EXTEND A MINIMUM OF 9" INTO THE NEW CONCRETE.



REVISIONS	
NAME	DATE
Kdg	3/02/05

ILLINOIS DEPARTMENT OF TRANSPORTATION  
 CONCRETE COLLAR DETAIL  
 FOR BOX CULVERT  
 EXTENSIONS  
 F.A.P. 750 (IL. RTE. 185)  
 SECTION 112,113 - FAYETTE CO.

SCALE: DRAWN BY CRO  
 DATE JULY 22, 2005 CHECKED BY RCY

PLAN SERIALIZED PLOTTED CHECKED BY DATE  
 NOTE BOOK NO. OF MAY CHECKED NO. FILE NAME

PLAN SERIALIZED PLOTTED CHECKED BY DATE  
 NOTE BOOK NO. OF MAY CHECKED NO. FILE NAME

J:\2003\030045\002\civil\phase 2 kdg\dgn\p2.750\_detail.sheets.dgn