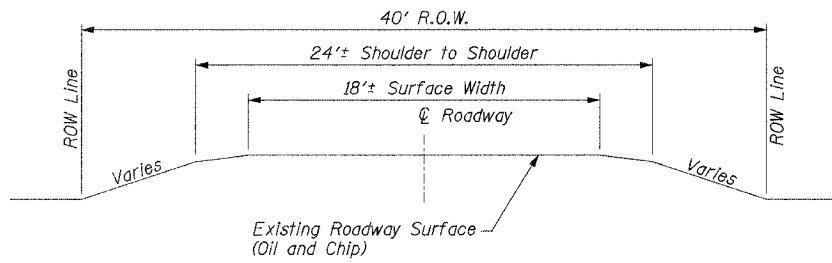
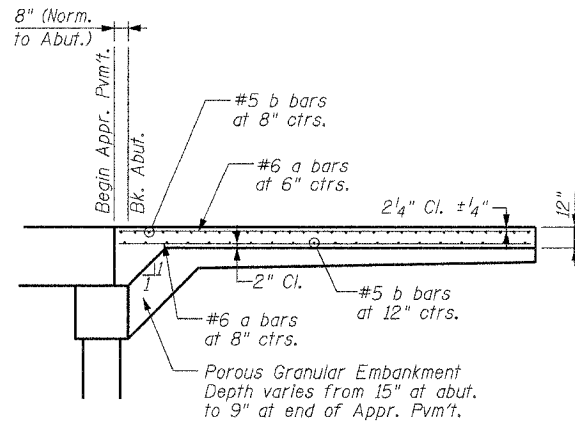


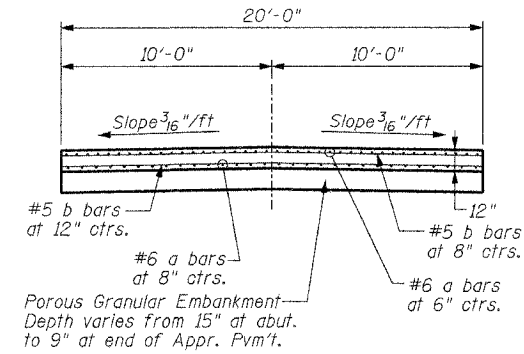
ROUTE	SECTION	COUNTY	TOTAL SHEETS	SHEET NO.
TR 227	98-11120-00-BR	JEFFERSON	35	3
FED. ROAD DIST. NO. 7		ILLINOIS	FED. AID PROJECT	
CONTRACT NO. 95437				



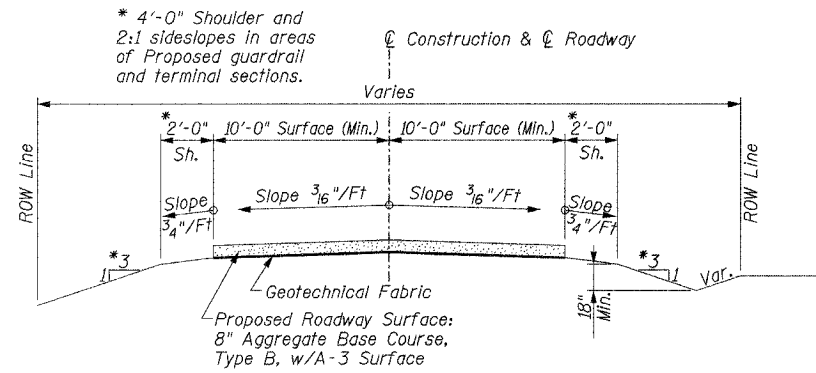
TYPICAL SECTION
EXISTING APPROACH ROADWAY



LONGITUDINAL SECTION

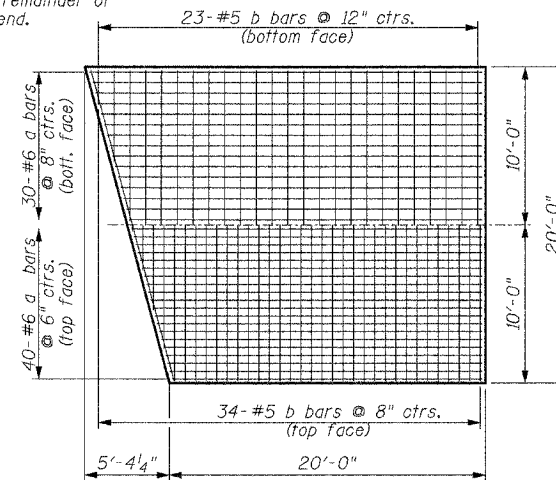


TRANSVERSE SECTION



TYPICAL SECTION
PROPOSED APPROACH ROADWAY

Order b bars full length. Cut to fit skew and use remainder of bars in opposite end.

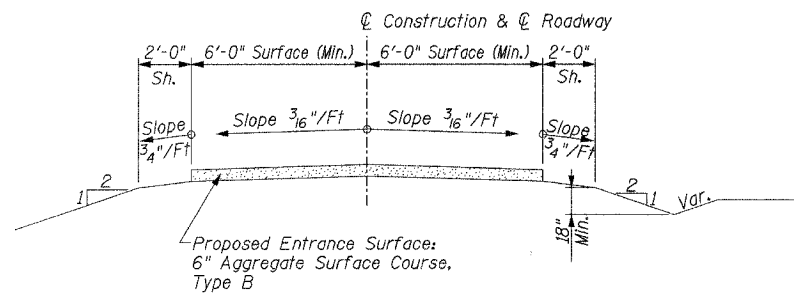


PLAN
BRIDGE APPROACH PAVEMENT (SPECIAL)

BILL OF MATERIALS
ONE APPROACH PAVEMENT

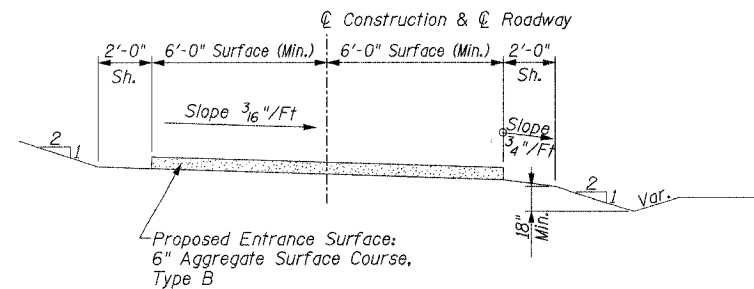
BAR	NO.	SIZE	LENGTH	SHAPE
a	70	#6	25'-0"	—
b	57	#5	19'-6"	—
Bridge Approach Pavement (Special)			Sq. Yd.	50.4
Class SI Concrete *			Cu. Yd.	16.8
Reinforcement *			Pound	3790

* Not a pay item: For Information only
(See Special Provisions)



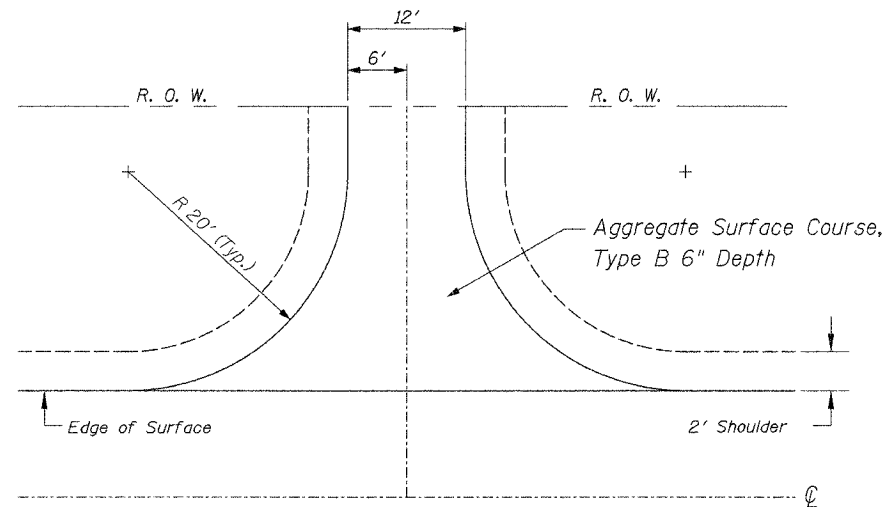
TYPICAL SECTION
PROPOSED ENTRANCE ROADWAY

Rt. Sta. 29+18
Rt. Sta. 29+65
Lt. Sta. 47+75



TYPICAL SECTION
PROPOSED ENTRANCE ROADWAY

Lt. Sta. 42+00



TYPICAL ENTRANCE

GUARDRAIL SCHEDULE

LOCATION	TRF BARR TERM TY 5A (EACH)	STEEL PLATE BEAM GUARD RAIL, TYPE A (FOOT)	TRF BARR TERM TY 1, SP. (TAN.) (EACH)
Lt. & Rt., Sta. 30+37.75 to Sta. 30+87.75	-	-	2
Lt. & Rt., Sta. 30+87.75 to Sta. 31+01.00	2	-	-
Lt. & Rt., Sta. 31+83.00 to Sta. 31+96.25	2	-	-
Lt., Sta. 31+96.25 to Sta. 37+10.70	-	514.45	-
Rt., Sta. 31+96.25 to Sta. 37+17.14	-	520.89	-
Lt., Sta. 37+10.70 to Sta. 37+23.95	1	-	-
Rt., Sta. 37+17.14 to Sta. 37+30.39	1	-	-
Lt., Sta. 40+25.95 to Sta. 40+39.20	1	-	-
Rt., Sta. 40+32.39 to Sta. 40+45.64	1	-	-
Lt., Sta. 40+39.20 to Sta. 40+89.20	-	50	-
Rt., Sta. 40+45.64 to Sta. 44+20.64	-	375	-
Lt., Sta. 40+89.20 to Sta. 41+39.20	-	-	1
Lt., Sta. 42+20.64 to Sta. 42+70.64	-	-	1
Lt., Sta. 42+70.64 to Sta. 44+20.64	-	150	-
Lt. & Rt., Sta. 44+20.64 to Sta. 44+70.64	-	-	2
Total	8	1610.34	6

TYPICAL SECTIONS
PROPOSED BRIDGE OVER
UNION PACIFIC RAILROAD AND CASEY FORK
TR 227 (GREEN ROAD)
SECTION 98-11120-00-BR
JEFFERSON COUNTY, ILLINOIS

Sheet
3
of 35
Job No. 52303

05/24/2005