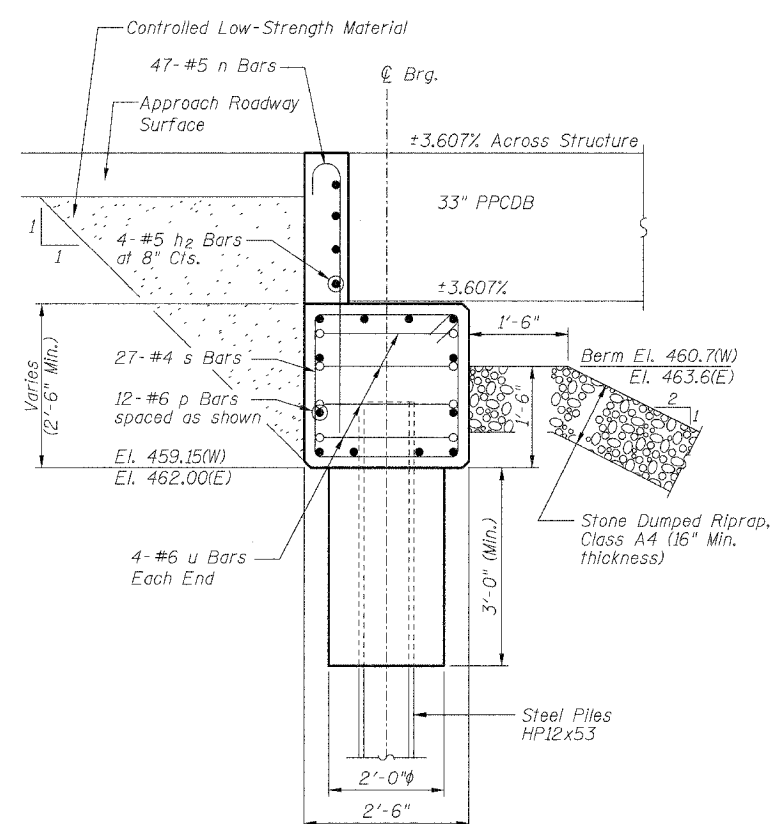
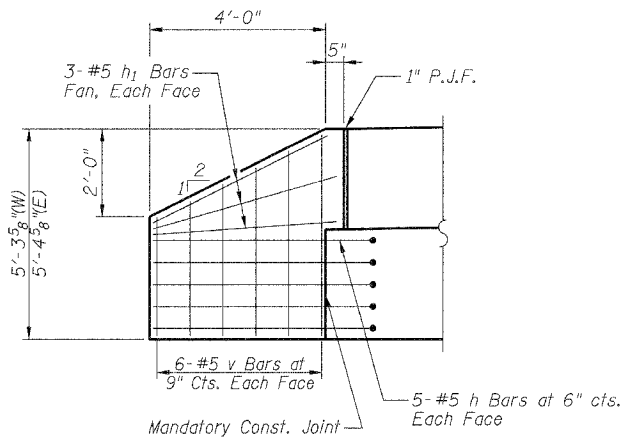


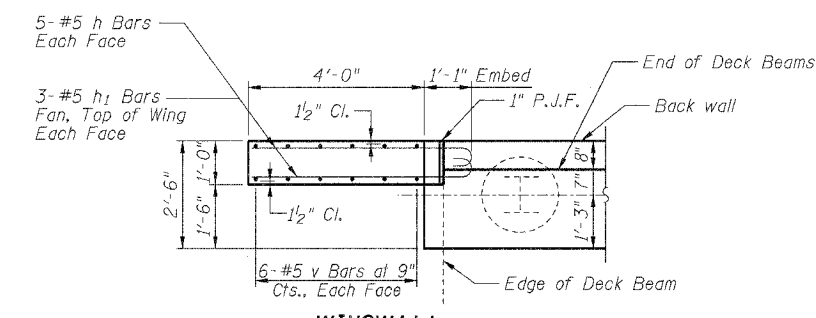
|                                |                |                  |              |           |
|--------------------------------|----------------|------------------|--------------|-----------|
| ROUTE                          | SECTION        | COUNTY           | TOTAL SHEETS | SHEET NO. |
| TR 227                         | 98-11120-00-BR | JEFFERSON        | 35           | 22        |
| FED. ROAD DIST. NO. 7 ILLINOIS |                | FED. AID PROJECT |              |           |
| CONTRACT NO. 95437             |                |                  |              |           |



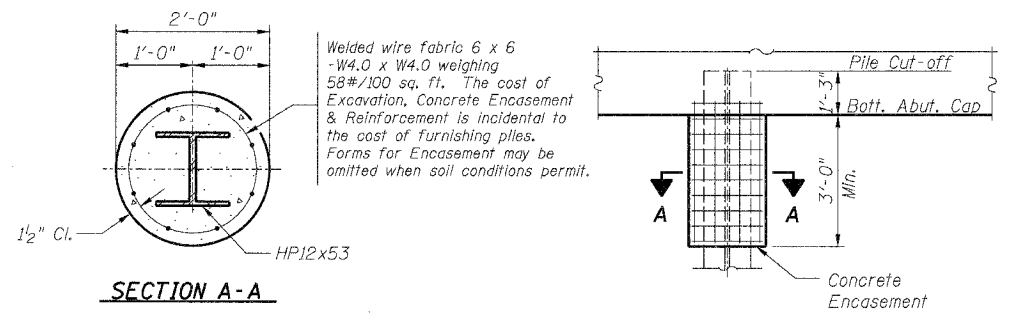
**SECTION THRU ABUTMENT**  
Normal to Abutment



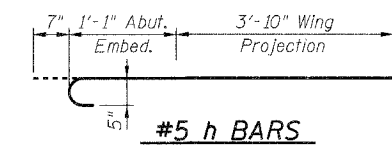
**ELEVATION OF WINGWALL**



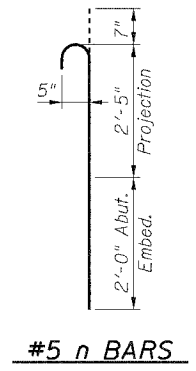
**WINGWALL CONNECTION DETAIL**



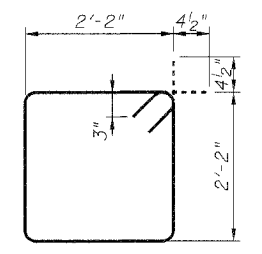
**SECTION A-A**  
**PILE ENCASEMENT DETAIL**



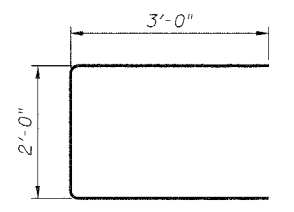
**#5 h BARS**



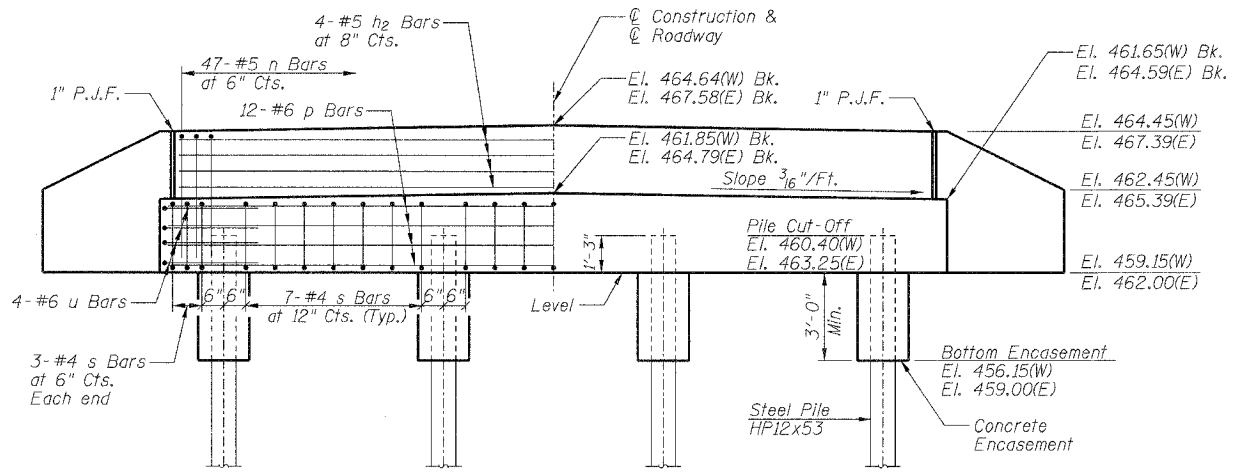
**#5 n BARS**



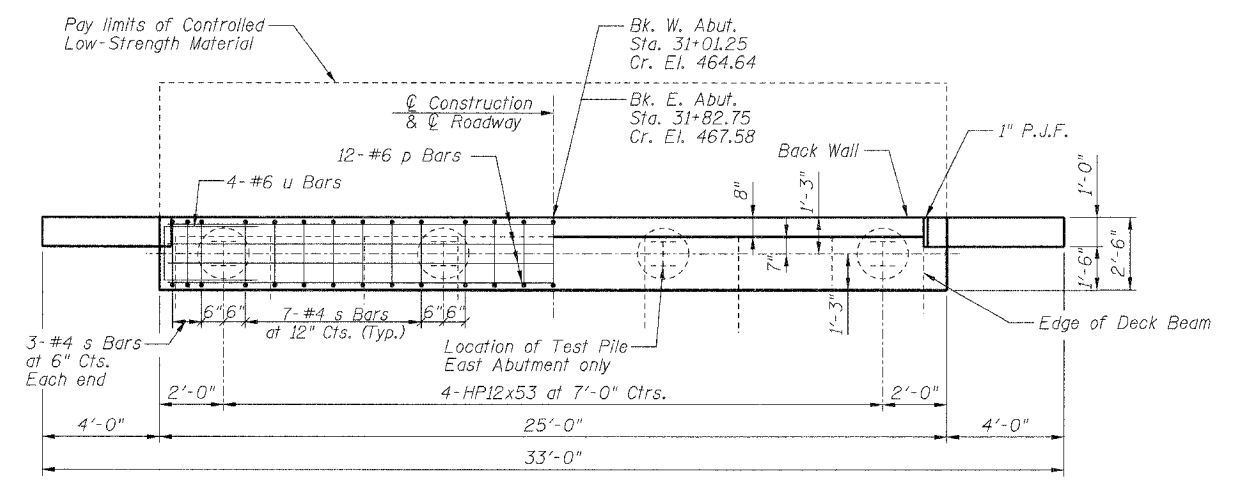
**#4 s BARS**



**#6 u BARS**



**ELEVATION**



**PLAN**

**PILE DATA**

|                         |                                     |                 |
|-------------------------|-------------------------------------|-----------------|
| Type:                   | West Abutment                       | HP12x53         |
|                         | East Abutment                       | HP12x53         |
| Number Required:        | West Abutment                       | 4               |
|                         | East Abutment                       | 3 + 1 Test Pile |
| Capacity:               | Drive to Refusal (Do not overdrive) |                 |
| Estimated Length:       | West Abutment                       | 49 foot         |
|                         | East Abutment                       | 52 foot         |
| Total Estimated Length: | (Does not include Test Pile)        |                 |
|                         | Steel HP12x53                       | 352 foot        |

**BILL OF MATERIALS**  
**ONE ABUTMENT w/ WINGWALLS**

| Bar                 | No. | Size | Length | Shape        |
|---------------------|-----|------|--------|--------------|
| h                   | 20  | #5   | 5'-6"  |              |
| h1                  | 12  | #5   | 4'-6"  |              |
| h2                  | 4   | #5   | 23'-8" |              |
| n                   | 47  | #5   | 5'-0"  |              |
| p                   | 12  | #6   | 24'-8" |              |
| s                   | 27  | #4   | 9'-5"  |              |
| u                   | 8   | #6   | 8'-0"  |              |
| v                   | 24  | #5   | 5'-0"  | OUT IN FIELD |
| Concrete Structures |     |      | Cu Yd  | 9.2          |
| Reinforcement Bars  |     |      | Pound  | 1350         |

**GENERAL NOTES**

- All exposed edges shall have standard 3/4" chamfer, unless otherwise noted.
- All clearances between reinforcement bars and form surface shall be 2", unless otherwise noted.
- Space reinforcement in cap to miss PPCDB dowel rods.
- The Contractor shall drive one (1) Steel HP12x53 Test Pile in a permanent location at the East Abutment as directed by the Engineer before ordering the remainder of the piles.
- (W) = West Abutment.
- (E) = East Abutment.

**ABUTMENT DETAILS**  
**PROPOSED OVERFLOW BRIDGE**  
**FOR CASEY FORK**  
**TR 227 / STA. 31+42.00**  
**SECTION 98-11120-00-BR**  
**JEFFERSON COUNTY, ILLINOIS**

05/24/2005