

STATE OF ILLINOIS
DEPARTMENT OF TRANSPORTATION
DIVISION OF HIGHWAYS

**PROPOSED
HIGHWAY PLANS**

F.A.I. RTE.	SECTION	COUNTY	TOTAL SHEETS	SHEET NO.
55	29T-1	WILL	19	1
		ILLINOIS	CONTRACT NO. 60A56	

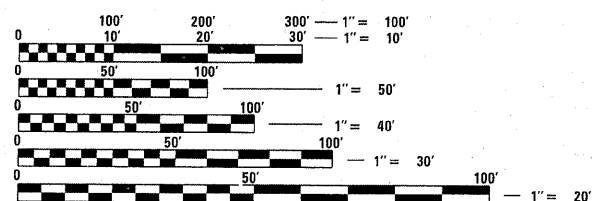
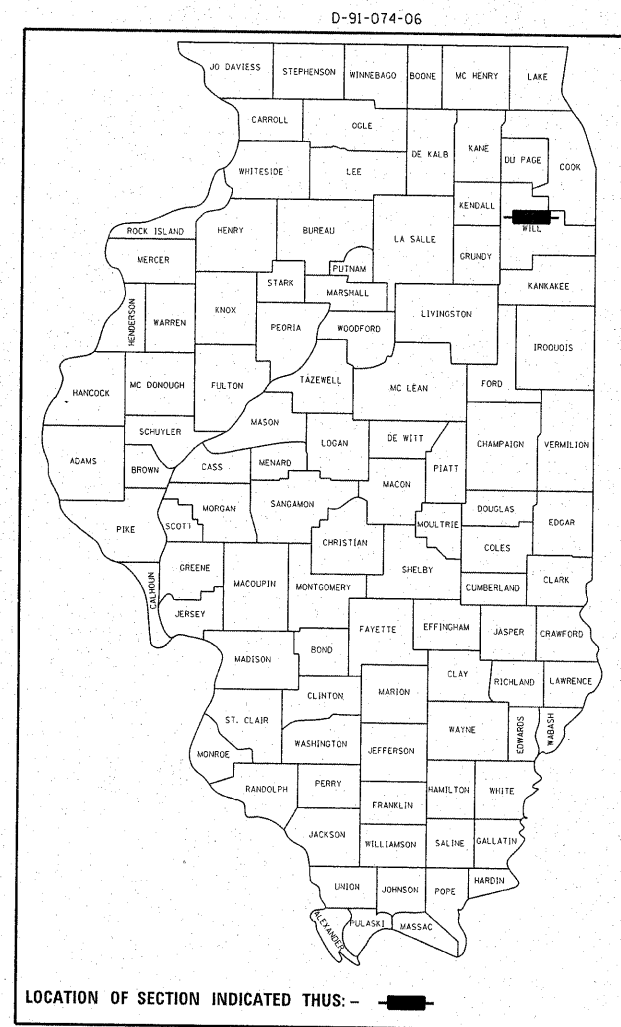
FOR INDEX OF SHEETS, SEE SHEET NO. 2

THE IMPROVEMENT IS LOCATED
IN THE VILLAGE OF BOLINGBROOK

TRAFFIC DATA

- ① I-55 NORTH OF IL-53
ADT 2008 = 141,700
POSTED SPEED LIMITS: 55 MPH
- ② I-55 AT IL-53
N.E. RAMP
ADT 2002 = 14,500
POSTED SPEED LIMITS: 30 MPH
- ③ I-55 AT IL-53
S.E. RAMP
ADT 2002 = 14,000

F.A.U.3510 (I-55 S.FRONTAGE RD.)
EAST OF IL 53 *PROJ. ACIM-3510(001)*
SECTION: 29T-1
DRAINAGE IMPROVEMENT
WILL COUNTY
C-91-074-06

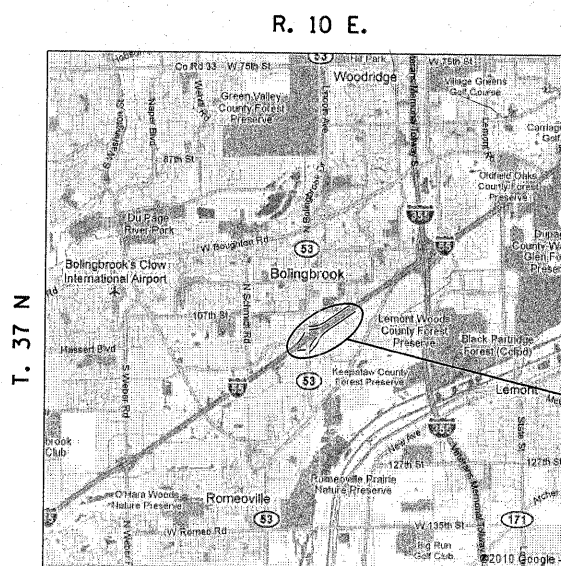


FULL SIZE PLANS HAVE BEEN PREPARED USING STANDARD ENGINEERING SCALES. REDUCED SIZED PLANS WILL NOT CONFORM TO STANDARD SCALES. IN MAKING MEASUREMENTS ON REDUCED PLANS, THE ABOVE SCALES MAY BE USED.

J.U.L.I.E.
JOINT UTILITY LOCATION INFORMATION FOR EXCAVATION
1-800-892-0123
OR 811

PROJECT ENGINEER: JENPAI CHANG (847)705-4432
PROJECT MANAGER: KEN ENG (847)705-4247

CONTRACT NO. 60A56



DUPAGE TOWNSHIP

LOCATION OF IMPROVEMENT
I-55 STA. 486 + 65 TO STA. 491 + 83
N.E. FRONTAGE RD. STA. 222 + 32 TO STA. 227 + 50
S.E. FRONTAGE RD. STA. 413 + 65 TO STA. 418 + 75

GROSS LENGTH OF IMPROVEMENT = 518 FT (0.098 MILES)
NET LENGTH OF IMPROVEMENT = 464 FT (0.086 MILES)

STATE OF ILLINOIS
DEPARTMENT OF TRANSPORTATION
DIVISION OF HIGHWAYS

SUBMITTED August 22, 2011

Diane M. O'Keefe
DEPUTY DIRECTOR OF HIGHWAYS, REGION ENGINEER

October 14 2011
Scott E. Stitt, P.E.
ACTING ENGINEER OF DESIGN AND ENVIRONMENT

October 14 2011
Christine M. Reed
DIRECTOR OF HIGHWAYS, CHIEF ENGINEER

PRINTED BY THE AUTHORITY
OF THE STATE OF ILLINOIS

DISTRICT 1 PLAN PREPARATION ENGINEERS: KEN ENG / JENPAI CHANG (847)705-4432