

STATE OF ILLINOIS
DEPARTMENT OF TRANSPORTATION
DIVISION OF HIGHWAYS

**PROPOSED
HIGHWAY PLANS**

F.A.I. RTE.	SECTION	COUNTY	TOTAL SHEETS	SHEET NO.
55	29T-1	WILL	19	1
		ILLINOIS	CONTRACT NO. 60A56	

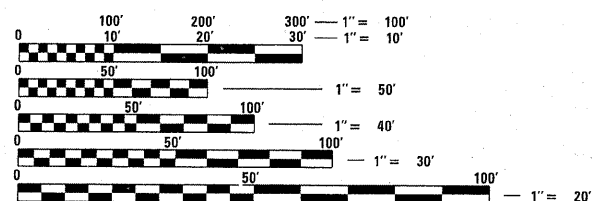
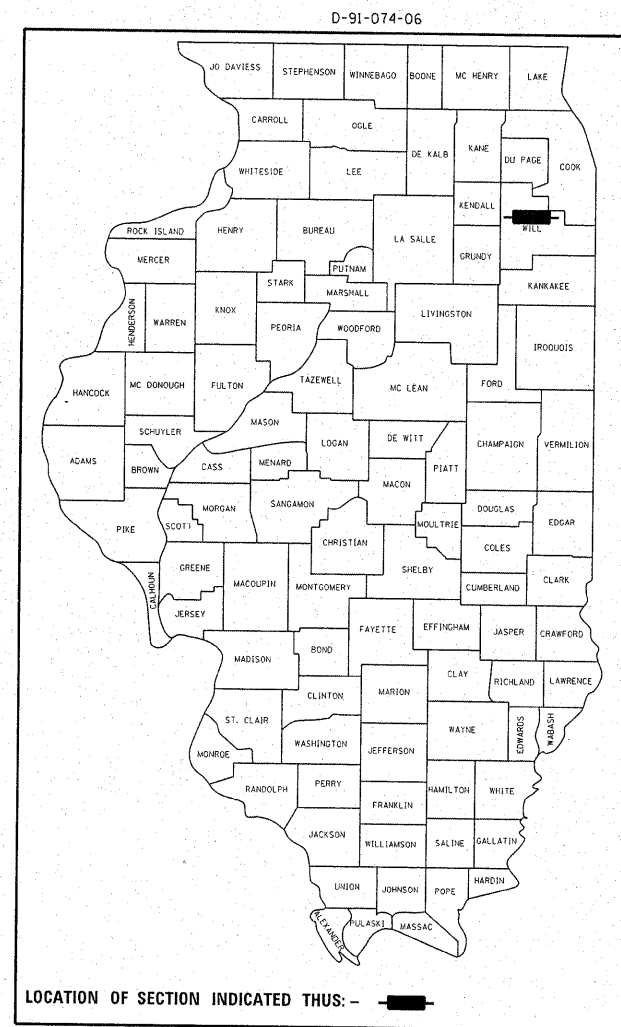
FOR INDEX OF SHEETS, SEE SHEET NO. 2

THE IMPROVEMENT IS LOCATED
IN THE VILLAGE OF BOLINGBROOK

TRAFFIC DATA

- ① I-55 NORTH OF IL-53
ADT 2008 = 141,700
POSTED SPEED LIMITS: 55 MPH
- ② I-55 AT IL-53
N.E. RAMP
ADT 2002 = 14,500
POSTED SPEED LIMITS: 30 MPH
- ③ I-55 AT IL-53
S.E. RAMP
ADT 2002 = 14,000

F.A.U.3510 (I-55 S.FRONTAGE RD.)
EAST OF IL 53 *PROJ. ACIM-3510(001)*
SECTION: 29T-1
DRAINAGE IMPROVEMENT
WILL COUNTY
C-91-074-06

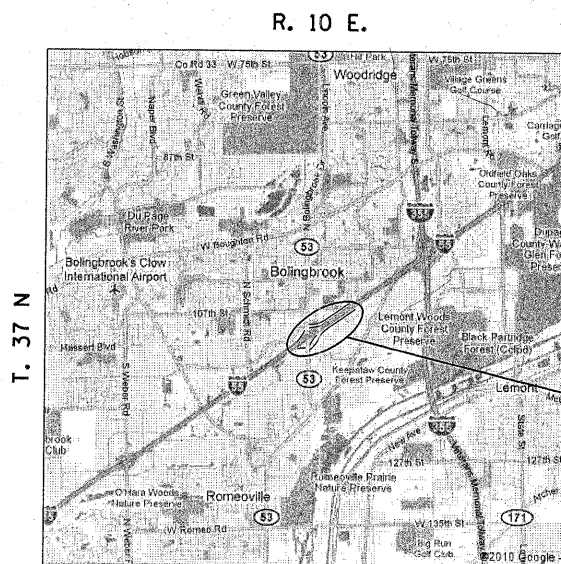


FULL SIZE PLANS HAVE BEEN PREPARED USING STANDARD ENGINEERING SCALES. REDUCED SIZED PLANS WILL NOT CONFORM TO STANDARD SCALES. IN MAKING MEASUREMENTS ON REDUCED PLANS, THE ABOVE SCALES MAY BE USED.

J.U.L.I.E.
JOINT UTILITY LOCATION INFORMATION FOR EXCAVATION
1-800-892-0123
OR 811

PROJECT ENGINEER: JENPAI CHANG (847)705-4432
PROJECT MANAGER: KEN ENG (847)705-4247

CONTRACT NO. 60A56



DUPAGE TOWNSHIP

GROSS LENGTH OF IMPROVEMENT = 518 FT (0.098 MILES)
NET LENGTH OF IMPROVEMENT = 464 FT (0.086 MILES)

LOCATION OF IMPROVEMENT
I-55 STA. 486 + 65 TO STA. 491 + 83
N.E. FRONTAGE RD. STA. 222 + 32 TO STA. 227 + 50
S.E. FRONTAGE RD. STA. 413 + 65 TO STA. 418 + 75

STATE OF ILLINOIS
DEPARTMENT OF TRANSPORTATION
DIVISION OF HIGHWAYS

SUBMITTED August 22, 20 11

Diane M. O'Keefe *et*
DEPUTY DIRECTOR OF HIGHWAYS, REGION ENGINEER

October 14 20 11
Scott E. Stitt, P.E.
ACTING ENGINEER OF DESIGN AND ENVIRONMENT

October 14 20 11
Christine M. Reed
DIRECTOR OF HIGHWAYS, CHIEF ENGINEER

PRINTED BY THE AUTHORITY
OF THE STATE OF ILLINOIS

DISTRICT 1 PLAN PREPARATION ENGINEERS: KEN ENG / JENPAI CHANG (847)705-4432

INDEX OF SHEETS

<u>SHEET NO.</u>	<u>DESCRIPTION</u>
1	COVER SHEET
2	INDEX OF SHEETS, STATE STANDARDS AND GENERAL NOTES
3	SUMMARY OF QUANTITIES
4	TYPICAL SECTIONS
5	SUE INVESTIGATION OF UNDERGROUND UTILITIES
6-10	ROADWAY AND DRAINAGE PLANS
11	EROSION CONTROL AND SEDIMENT CONTROL PLAN
12-18	CROSS SECTIONS
19	TEMPORARY INFORMATION SIGNING

STANDARDS

000001-06	STANDARD SYMBOLS, ABBREVIATIONS AND PATTERNS
280001-05	TEMPORARY EROSION CONTROL SYSTEMS
602001-02	CATCH BASIN, TYPE "A"
602401-03	MANHOLE, TYPE "A"
701006-03	OFF ROAD OPERATIONS 2L, 2W, 15' TO PAVEMENT EDGE FOR SPEEDS GREATER THAN OR EQUAL TO 45 MPH
701201-04	LANE CLOSURES, 2L, 2W DAY ONLY ON RD. TO 24" OFF RD. FOR SPEEDS GREATER THAN OR EQUAL TO 45 MPH
701901-01	TRAFFIC CONTROL DEVICES

GENERAL NOTES

- BEFORE STARTING ANY EXCAVATION, THE CONTRACTOR SHALL CALL "JULIE" AT 800-892-0123 FOR FIELD LOCATIONS OF BURIED ELECTRIC, TELEPHONE AND GAS FACILITIES. (48 HOURS NOTIFICATION REQUIRED).
- THE CONTRACTOR SHALL COORDINATE CONSTRUCTION ACTIVITIES WITH UTILITY COMPANIES AND THE VILLAGE OF BOLINGBROOK
- THE CONTRACTOR WILL NOT BE ALLOWED TO SET UP A YARD OR FIELD OFFICE ON STATE PROPERTY WITHOUT WRITTEN PERMISSION FROM THE DEPARTMENT.
- THE RESIDENT ENGINEER SHALL CONTACT LAWRENCE HILL AREA TRAFFIC FIELD ENGINEER AT (815) 485-6475 AT LEAST TWO(2) WEEKS PRIOR TO INSTALLATION OF FINAL PAVEMENT MARKING.
- THE CONTRACTOR SHALL BE RESPONSIBLE FOR PROTECTION OF ALL OVERHEAD, SURFACE AND UNDERGROUND UTILITIES WITHIN THE PROJECT LIMITS WHETHER OR NOT THE UTILITIES ARE SHOWN ON THE PLANS. ANY UTILITY THAT IS DAMAGED DURING CONSTRUCTION SHALL BE REPAIRED BY THE CONTRACTOR AT HIS OWN EXPENSE.
- EXISTING SEWER LOCATIONS SHOWN ARE FROM AVAILABLE INFORMATION. CONTRACTOR SHALL FIELD VERIFY ALL LOCATIONS.
- THE RESIDENT ENGINEER SHOULD CONTACT TRAFFIC CONTROL SUPERVISOR AT (847)705-4470 @ LEAST 72 HOURS PRIOR TO PLACEMENT OF ANY TEMPORARY TRAFFIC CONTROL DEVICES.

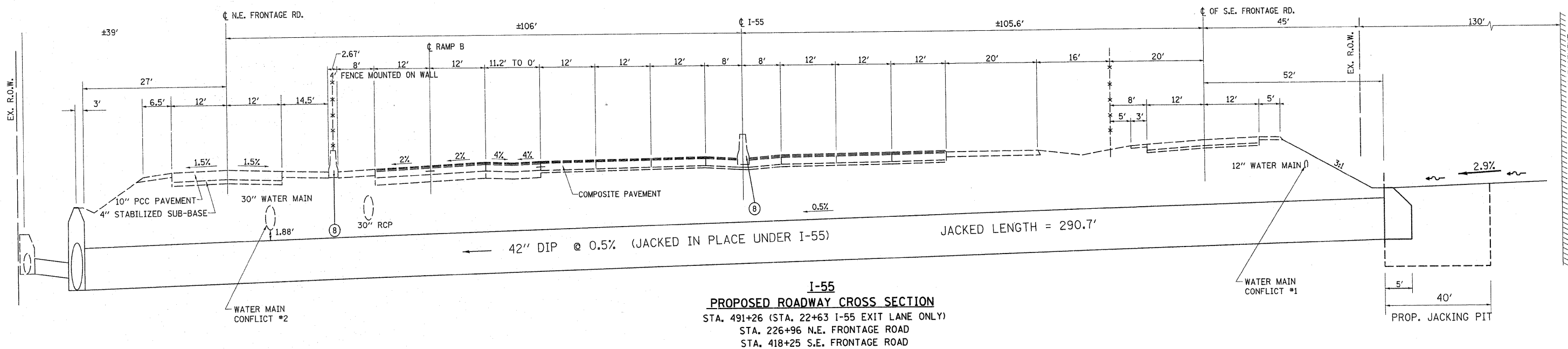
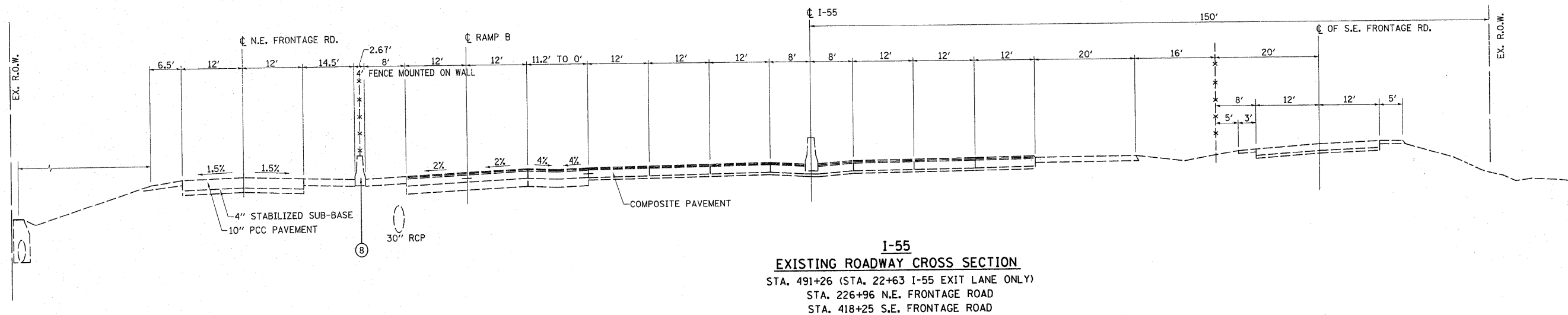
FILE NAME =	USER NAME = leysa	DESIGNED -	REVISED -	STATE OF ILLINOIS DEPARTMENT OF TRANSPORTATION	I-55 EAST OF IL 53 INDEX OF SHEETS, STANDARDS, AND GENERAL NOTES				F.A.I. RTE.	SECTION	COUNTY	TOTAL SHEETS	SHEET NO.
ci:\pw\work\pw\dot\leysa\dms89282\010740	shl-drain.dgn	DRAWN -	REVISED -		55	29T-1	WILL	19	2				
PLOT SCALE = 50.0000' / in.	CHECKED -	REVISED -	REVISED -		CONTRACT NO. 60A56								
PLOT DATE = 8/29/2011	DATE -	REVISED -	REVISED -		SCALE: 1"=50'	SHEET NO. 2 OF	SHEETS	STA.	TO STA.	ILLINOIS FED. AID PROJECT			

SUMMARY OF QUANTITIES				CONSTRUCTION TYPE CODE						SUMMARY OF QUANTITIES				CONSTRUCTION TYPE CODE					
CODE NO	ITEM	UNIT	TOTAL QUANTITIES	0044						CODE NO	ITEM	UNIT	TOTAL QUANTITIES						
20200100	EARTH EXCAVATION	CU YD	89.5	89.5															
*21101615	TOPSOIL FURNISH AND PLACE, 4"	SQ YD	963	963															
21400100	GRADING AND SHAPING DITCHES	FOOT	250	250															
*25000210	SEEDING, CLASS 2A	ACRE	0.07	0.07															
*25000400	NITROGEN FERTILIZER NUTRIENT	POUND	15	15															
*25000500	PHOSPHORUS FERTILIZER NUTRIENT	POUND	15	15															
*25000600	POTASSIUM FERTILIZER NUTRIENT	POUND	15	15															
*25100630	EROSION CONTROL BLANKET	SQ YD	963	963															
*25200100	SODDING	SQ YD	620	620															
28000400	PERIMETER EROSION BARRIER	FOOT	758.5	758.5															
28000500	INLET AND PIPE PROTECTION	EACH	2	2															
55100900	STORM SEWER REMOVAL 18"	FOOT	198	198															
55101200	STORM SEWER REMOVAL 24"	FOOT	125	125															
55101400	STORM SEWER REMOVAL 30"	FOOT	130	130															
60204505	CATCH BASINS, TYPE A, 5'-DIAMETER, TYPE B GRATE	EACH	3	3															
60223800	MANHOLES, TYPE A, 6'-DIAMETER, TYPE 1 FRAME, CLOSED LID	EACH	1	1															
60224446	MANHOLES, TYPE A, 7'-DIAMETER, TYPE 1 FRAME, CLOSED LID	EACH	2	2															
60500040	REMOVING MANHOLES	EACH	2	2															
60500050	REMOVING CATCH BASINS	EACH	1	1															
67100100	MOBILIZATION	L SUM	1	1															
67000400	ENGINEER'S FIELD OFFICE, TYPE A	CAL MO	6	6															
70100450	TRAFFIC CONTROL & PROTECTION, STD. 701201	L SUM	1	1															
X5521500	STORM SEWERS JACKED IN PLACE, 42" SPECIAL	FOOT	291	291															
Z0030850	TEMPORARY INFORMATION SIGNING	SQ FT	104	104															
Z0056628	STORM SEWERS (WATERMAIN REQUIREMENTS), 48"	FOOT	453	453															
Z0068412	STEEL CASINGS, 54"	FOOT	291	291															

*SPECIALTY ITEMS

FILE NAME =	USER NAME = jaysa	DESIGNED -	REVISED -	STATE OF ILLINOIS DEPARTMENT OF TRANSPORTATION	I-55 EAST OF IL-53 DRAINAGE IMPROVEMENT SUMMARY OF QUANTITIES	F.A.I. RTE.	SECTION	COUNTY	TOTAL SHEETS	SHEET NO.	
c:\work\work\jaysa\dms89282\0107405-stl-drain.dgn	PLOT SCALE = 50,000' / 1" =	DRAWN -	REVISED -			55	29T-1	WILL	19	3	
	PLOT DATE = 8/29/2011	CHECKED -	REVISED -			CONTRACT NO. 60A56					
		DATE -	REVISED -			FED. ROAD DIST. NO. 1 ILLINOIS FED. AID PROJECT					

Rev.



FILE NAME =
 c:\pwwork\pwwid\baerd\1\dms89282\0107

USER NAME = baerd
 06-sht-drain.dgn
 PLOT SCALE = 50.0000' / in.
 PLOT DATE = 8/10/2011

DESIGNED -	REVISED -
DRAWN -	REVISED -
CHECKED -	REVISED -
DATE -	REVISED -

STATE OF ILLINOIS
DEPARTMENT OF TRANSPORTATION

EXISTING & PROPOSED TYPICAL SECTIONS
I-55 WITH N.E. AND S.E. FRONTAGE ROADS

F.A.I. RTE. 55	SECTION 29T-1	COUNTY WILL	TOTAL SHEETS 19	SHEET NO. 4
CONTRACT NO. 60A56				ILLINOIS FED. AID PROJECT

VERIFIED UTILITY INFORMATION - SUE QUALITY LEVEL A

CONFLICT NO.	SIZE / TYPE	NORTHING	EASTING	STATION	OFFSET	TOP OF UTILITY	EXISTING CUT	REFERENCE GROUND ELEV.	COMMENTS
1	WATER MAIN	1828656.33	1057990.33	418+23.62	33.19 RT.	700.65	3.05	703.70	ILLINOIS AMERICAN WATER
2	WATER MAIN	1828848.50	1057853.58	226+99.70	7.21 RT.	701.74	6.93	708.67	ILLINOIS AMERICAN WATER

STATE OF ILLINOIS)
COUNTY OF COOK) S.S.

UTILITY(IES) SHOWN HEREON HAVE BEEN INVESTIGATED BY ASE IN ACCORDANCE WITH SUE INDUSTRY STANDARDS QUALITY LEVEL A (QLA) AND B (QLB). ALL OTHER INFORMATION SHOWN HAS BEEN PROVIDED BY OTHERS.

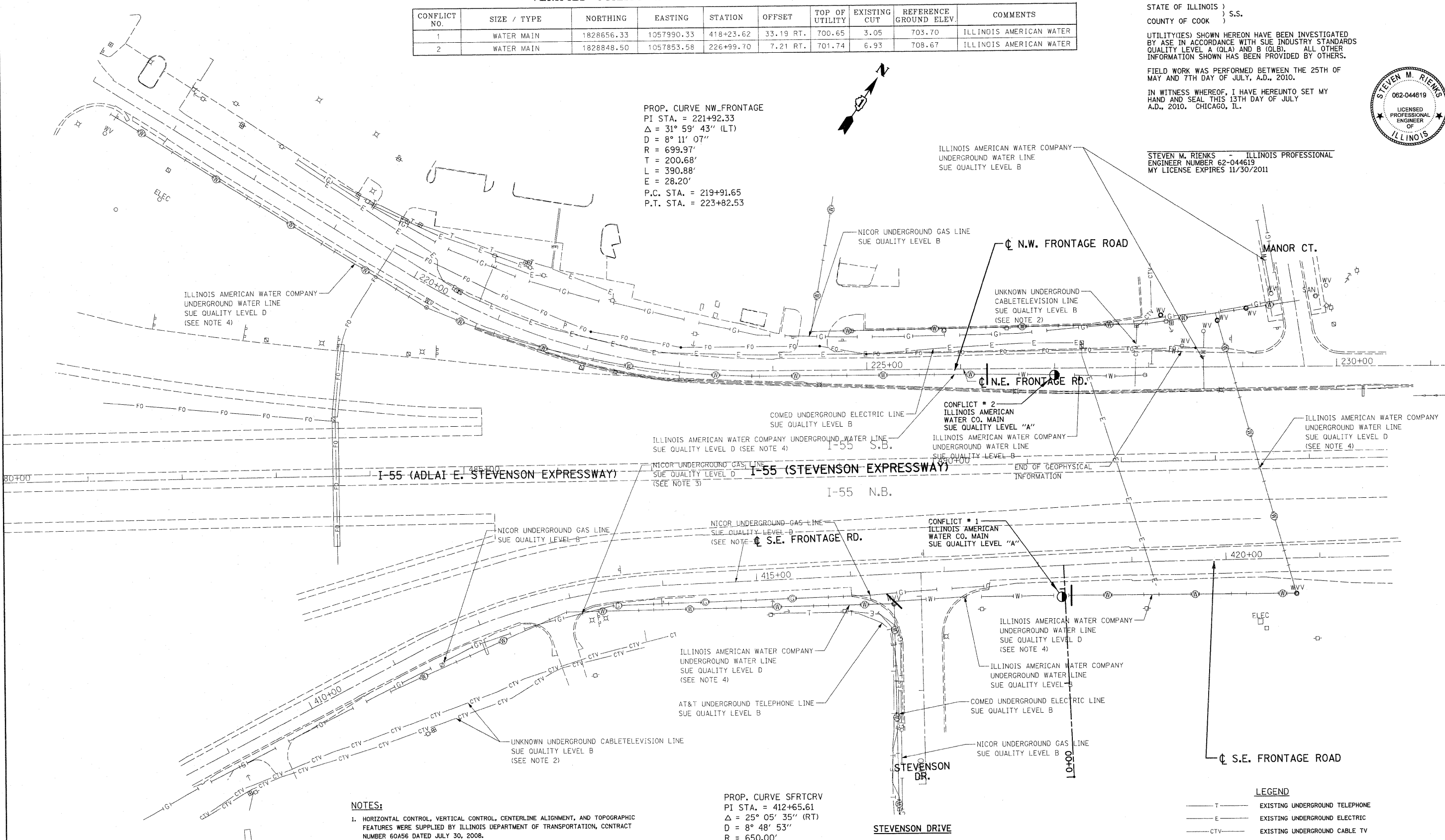
FIELD WORK WAS PERFORMED BETWEEN THE 25TH OF MAY AND 7TH DAY OF JULY, A.D., 2010.

IN WITNESS WHEREOF, I HAVE HEREUNTO SET MY HAND AND SEAL THIS 13TH DAY OF JULY A.D., 2010. CHICAGO, IL.



STEVEN M. RIENKS - ILLINOIS PROFESSIONAL ENGINEER NUMBER 62-044619
MY LICENSE EXPIRES 11/30/2011

PROP. CURVE NW_FRONTAGE
PI STA. = 221+92.33
Δ = 31° 59' 43" (LT)
D = 8° 11' 07"
R = 699.97'
T = 200.68'
L = 390.88'
E = 28.20'
P.C. STA. = 219+91.65
P.T. STA. = 223+82.53



- NOTES:**
- HORIZONTAL CONTROL, VERTICAL CONTROL, CENTERLINE ALIGNMENT, AND TOPOGRAPHIC FEATURES WERE SUPPLIED BY ILLINOIS DEPARTMENT OF TRANSPORTATION, CONTRACT NUMBER 60A56 DATED JULY 30, 2008.
 - COMCAST DO NOT HAVE ANY UNDERGROUND FACILITIES WITHIN THE PROJECT LIMITS, HOWEVER THERE IS EVIDENCE OF POSSIBLE LINES IN THE FIELD.
 - BASED ON THE ATLAS PROVIDED BY NICOR, THE LINE IS CONTINUOUS. THIS SECTION OF THE LINE WAS INDETERMINABLE.
 - SOME WATER MAINS WERE INDETERMINABLE. THEY ARE DRAWN USING THE ATLAS PROVIDED BY ILLINOIS AMERICAN WATER COMPANY.

PROP. CURVE SFRTCRV
PI STA. = 412+65.61
Δ = 25° 05' 35" (RT)
D = 8° 48' 53"
R = 650.00'
T = 144.66'
L = 284.67'
E = 15.90'
P.C. STA. = 411+20.96
P.T. STA. = 414+05.63

LEGEND

(Symbol: T)	EXISTING UNDERGROUND TELEPHONE
(Symbol: E)	EXISTING UNDERGROUND ELECTRIC
(Symbol: CTV)	EXISTING UNDERGROUND CABLE TV
(Symbol: G)	EXISTING UNDERGROUND GAS
(Symbol: W)	EXISTING UNDERGROUND WATER
(Symbol: W with circle)	EXISTING UNDERGROUND WATER (PER UTILITY ATLAS MAPS)
(Symbol: G with circle)	EXISTING UNDERGROUND GAS (PER UTILITY ATLAS MAPS)
(Symbol: Conflict)	CONFLICT (SUE QUALITY LEVEL A)

AMERICAN
SURVEYING & ENGINEERING, P.C.
SURVEYORS - ENGINEERS
GEODESISTS - MAPPING SCIENTISTS
Chicago 312-277-2000 / Fax 312-277-2002
Dixon 815-286-6231 / Fax 815-286-6277
Aurora 603-897-4105 / Fax 630-897-4121
Illinois Professional Design Firm No. 184-003192

FILE NAME =	USER NAME =	DESIGNED -	REVISED -
ea:\p\work\p\dot\1\eyss\d\278193\SH1_UT1.dgn		DRAWN - CTT	REVISED -
		CHECKED - SMR	REVISED -
		DATE -	REVISED -

STATE OF ILLINOIS
DEPARTMENT OF TRANSPORTATION

SUE INVESTIGATION OF UNDERGROUND UTILITIES
F.A.I. 55 (I-55) EAST OF IL-53

SCALE: 1"=50' SHEET NO. OF SHEETS STA. TO STA.

F.A.I. RTE.	SECTION	COUNTY	TOTAL SHEETS	SHEET NO.
55	29T-1	WILL	19	5
FED. ROAD DIST. NO. 1 ILLINOIS FED. AID PROJECT				CONTRACT NO. 60A56

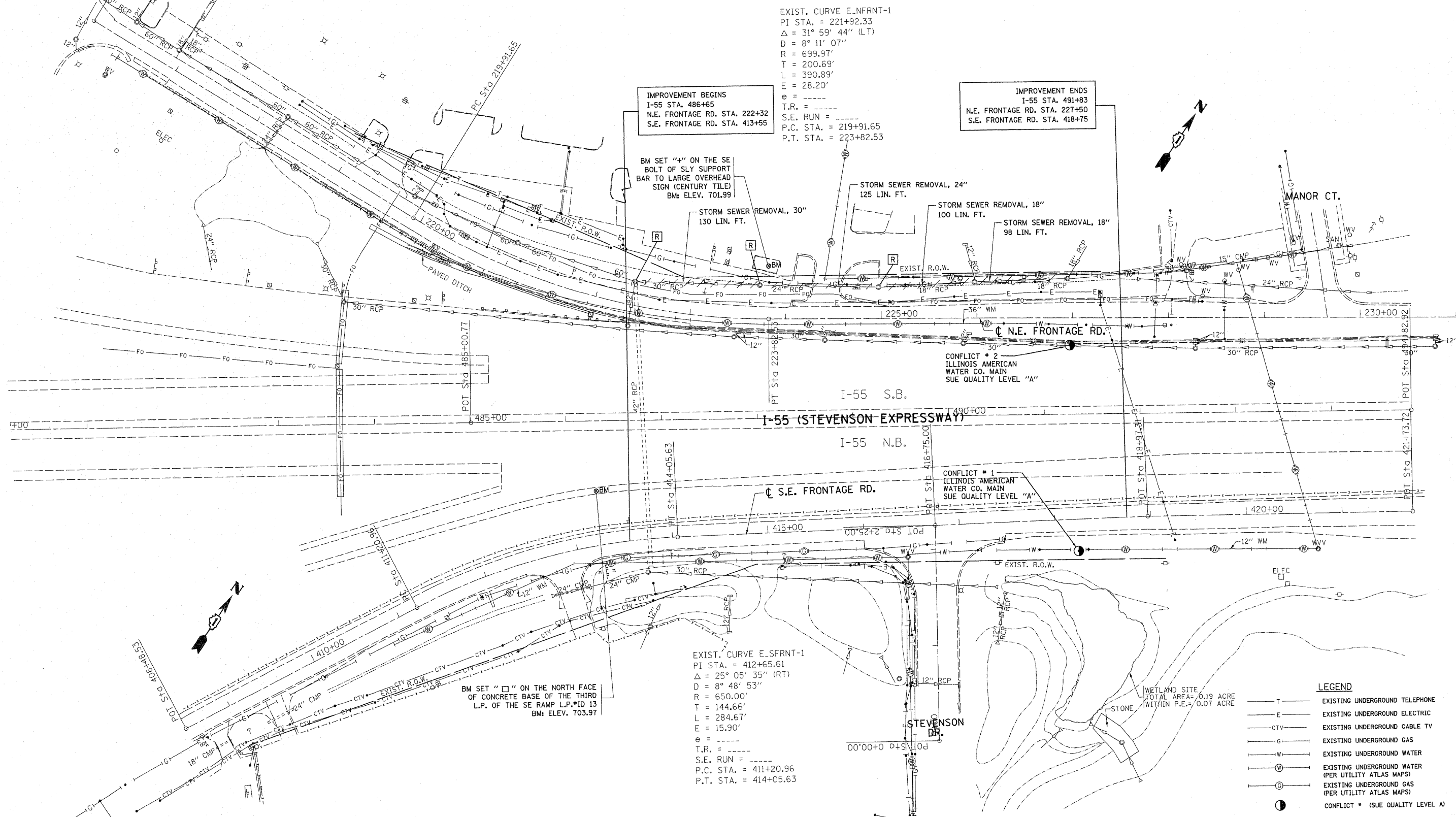
VERIFIED UTILITY INFORMATION - SUE QUALITY LEVEL A

CONFLICT NO.	SIZE / TYPE	NORTHING	EASTING	STATION	OFFSET	TOP OF UTILITY	EXISTING CUT	REFERENCE GROUND ELEV.	COMMENTS
1	WATER MAIN	1828656.33	1057990.33	418+23.62	33.19 RT	700.65	3.05	703.70	ILLINOIS AMERICAN WATER
2	WATER MAIN	1828848.50	1057853.58	226+99.70	7.21 RT	701.74	6.93	708.67	ILLINOIS AMERICAN WATER

NOTES:

- HORIZONTAL CONTROL, VERTICAL CONTROL, CENTERLINE ALIGNMENT, AND TOPOGRAPHIC FEATURES WERE SUPPLIED BY ILLINOIS DEPARTMENT OF TRANSPORTATION, CONTRACT NUMBER 60A56 DATED JULY 30, 2008.
- COMCAST DO NOT HAVE ANY UNDERGROUND FACILITIES WITHIN THE PROJECT LIMITS, HOWEVER THERE IS EVIDENCE OF POSSIBLE LINES IN THE FIELD.
- BASED ON THE ATLAS PROVIDED BY NICOR, THE LINE IS CONTINUOUS. THIS SECTION OF THE THE LINE WAS INDETERMINABLE.
- SOME WATER MAINS WERE INDETERMINABLE. THEY ARE DRAWN USING THE ATLAS PROVIDED BY ILLINOIS AMERICAN WATER COMPANY.

LOCATIONS OF UNDERGROUND STRUCTURES OR FACILITIES SHOWN ON PLANS ARE BASED ON AVAILABLE INFORMATION WHICH NEEDS TO BE VERIFIED IN THE FIELD. THE CONTRACTOR IS RESPONSIBLE FOR CONTACTING ALL UTILITY COMPANIES AND VILLAGES INVOLVED BEFORE STARTING WORK



LEGEND

— T —	EXISTING UNDERGROUND TELEPHONE
— E —	EXISTING UNDERGROUND ELECTRIC
— CTV —	EXISTING UNDERGROUND CABLE TV
— G —	EXISTING UNDERGROUND GAS
— W —	EXISTING UNDERGROUND WATER
— (W) —	EXISTING UNDERGROUND WATER (PER UTILITY ATLAS MAPS)
— (G) —	EXISTING UNDERGROUND GAS (PER UTILITY ATLAS MAPS)
●	CONFLICT (SUE QUALITY LEVEL A)

FILE NAME =	USER NAME = bauerdl	DESIGNED -	REVISED -
c:\pwork\pwork\bauderdl\dms89282\10107	26-shd-dra.indgn	DRAWN -	REVISED -
	PLOT SCALE = 50.0000' / in.	CHECKED -	REVISED -
	PLOT DATE = 8/18/2011	DATE -	REVISED -

**STATE OF ILLINOIS
DEPARTMENT OF TRANSPORTATION**

**EXISTING DRAINAGE & UTILITY PLAN
I-55 NORTH & SOUTH FRONTAGE RD.**

SCALE: 1"=50' SHEET NO. OF SHEETS STA. TO STA.

F.A.I. RTE.	SECTION	COUNTY	TOTAL SHEETS	SHEET NO.
55	29T-1	WILL	19	6
FED. ROAD DIST. NO.			ILLINOIS FED. AID PROJECT	
			CONTRACT NO. 60A56	

PROPOSED STRUCTURES

- 1 CB, TYPE A, 5' DIA. W/ TY-8 F&G.
STA. 418+25 (I-55 S.E. FRONTAGE RD.) 51' RT
T.O.G. = 697.5
INV. ±691.8
- 2 MH, TYPE A, 7' DIA. W/ TY-1 F&G. OPEN LID
STA. 226+97.5 (I-55 N.E. FRONTAGE RD.) 36' LT
T.O.G. = 705.00
INV. 691.42 (S) 691.42 (W), 695.66 (N)

PROPOSED STRUCTURES

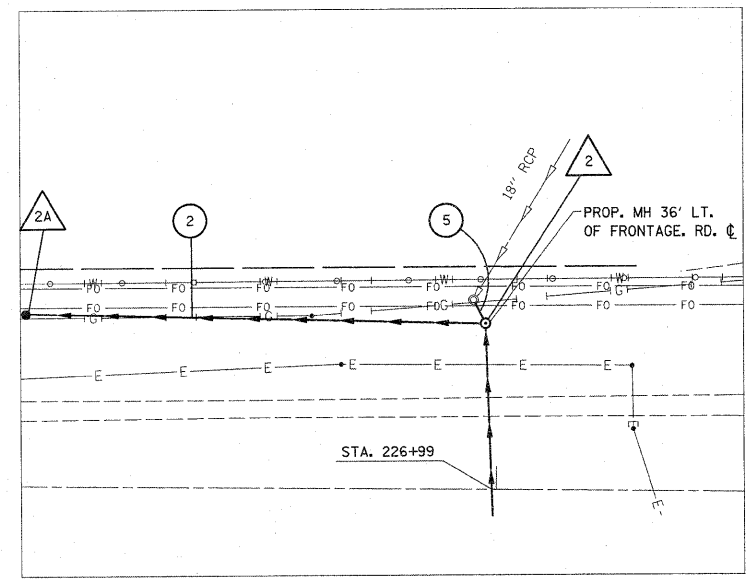
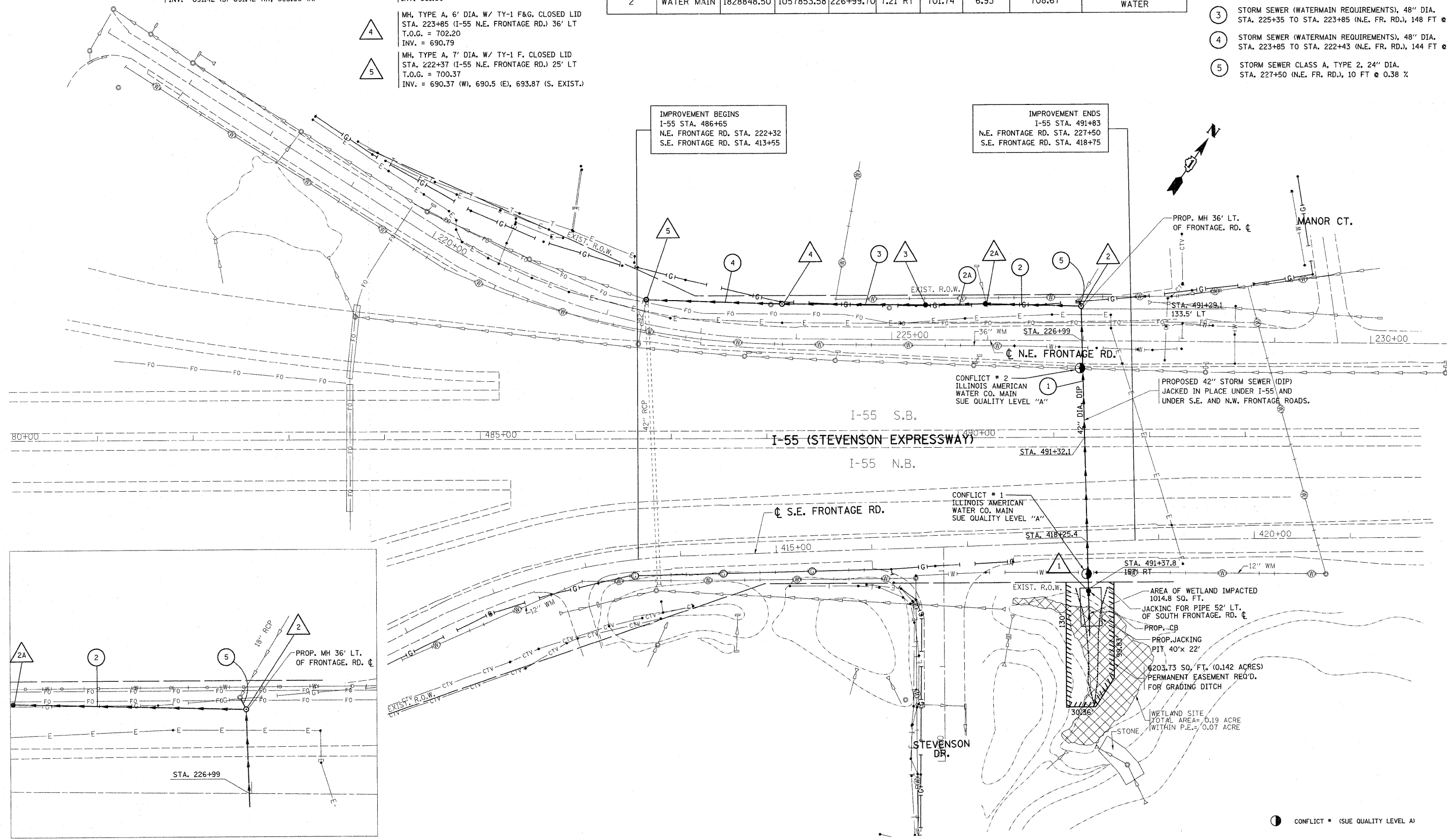
- 2A CB, TYPE A, 5' DIA. W/ TY-8 F&G.
STA. 225+96 (I-55 N.E. FRONTAGE RD.) 37.5' LT
T.O.G. = 697.38
INV. 691.68
- 3 CB, TYPE A, 5' DIA. W/ TY-8 F&G.
STA. 225+35 (I-55 N.E. FRONTAGE RD.) 36' LT
T.O.G. = 702.00
INV. 691.09
- 4 MH, TYPE A, 6' DIA. W/ TY-1 F&G. CLOSED LID
STA. 223+85 (I-55 N.E. FRONTAGE RD.) 36' LT
T.O.G. = 702.20
INV. = 690.79
- 5 MH, TYPE A, 7' DIA. W/ TY-1 F. CLOSED LID
STA. 222+37 (I-55 N.E. FRONTAGE RD.) 25' LT
T.O.G. = 700.37
INV. = 690.37 (W), 690.5 (E), 693.87 (S. EXIST.)

VERIFIED UTILITY INFORMATION - SUE QUALITY LEVEL A

CONFLICT NO.	SIZE / TYPE	NORTHING	EASTING	STATION	OFFSET	TOP OF UTILITY	EXISTING CUT	REFERENCE GROUND ELEV.	COMMENTS
1	WATER MAIN	1828656.33	1057990.33	418+23.62	33.19 RT	700.65	3.05	703.70	ILLINOIS AMERICAN WATER
2	WATER MAIN	1828848.50	1057853.58	226+99.70	7.21 RT	701.74	6.93	708.67	ILLINOIS AMERICAN WATER

PROPOSED PIPES

- 1 STORM SEWER JACKED (DUCTILE IRON PIPE)
AT STA. 491+32 (I-55) 290.7 FT, 42" DIA. @ 0.5%
- 2 STORM SEWER (WATERMAIN REQUIREMENTS), 48" DIA.
STA. 226+96 TO STA. 225+96 (N.E. FR. RD.), 100 FT @ 0.2%
- 2A STORM SEWER (WATERMAIN REQUIREMENTS), 48" DIA.
STA. 225+96 TO STA. 225+35 (N.E. FR. RD.), 61 FT @ 0.2%
- 3 STORM SEWER (WATERMAIN REQUIREMENTS), 48" DIA.
STA. 225+35 TO STA. 223+85 (N.E. FR. RD.), 148 FT @ 0.2%
- 4 STORM SEWER (WATERMAIN REQUIREMENTS), 48" DIA.
STA. 223+85 TO STA. 222+43 (N.E. FR. RD.), 144 FT @ 0.2%
- 5 STORM SEWER CLASS A, TYPE 2, 24" DIA.
STA. 227+50 (N.E. FR. RD.), 10 FT @ 0.38 %



STATE OF ILLINOIS
DEPARTMENT OF TRANSPORTATION

PROPOSED DRAINAGE & UTILITY PLAN
I-55 NORTH & SOUTH FRONTAGE RD.
SCALE: 1"=50' SHEET NO. OF SHEETS STA. TO STA.

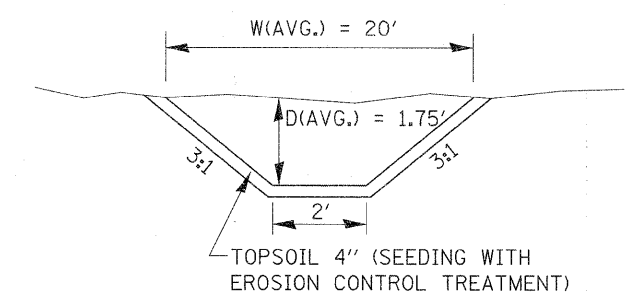
F.A.I. RTE.	SECTION	COUNTY	TOTAL SHEETS	SHEET NO.
55	29T-1	WILL	17	7
FED. ROAD DIST. NO.		ILLINOIS FED. AID PROJECT		
		CONTRACT NO. 60A56		

FILE NAME =	USER NAME = ulriahkd	DESIGNED -	REVISED -
ct:\pwork\pwork\ulriahkd\dms89282\DI07406-shd-drain.dgn		DRAWN -	REVISED -
PLOT SCALE = 50.0000' / 1" =		CHECKED -	REVISED -
PLOT DATE = 8/24/2011		DATE -	REVISED -

NOTE:
SEE OTHER SHEET FOR
NORTH SIDE OF I-55 AND
N.E. FRONTAGE RD.

"SCHEDULE OF PAY ITEMS RELATED TO SEEDING, SODDING, FOR RESTORATION OF DISTURBED SOIL."
(PROPOSED STORM SEWER & DITCH AT S.E. FRONTAGE RD)

CODE#	PAY ITEM	UNIT	QUANTITY
20200100	EARTH EXCAVATION	CU. YD.	89.5
21101615	TOP SOIL FURNISH & PLACE, 4"	SQ. YD.	963.00
21400100	GRADING & SHAPING DITCHES	FOOT	250.00
25000210	SEEDING, CLASS 2A	ACRE	0.07
25000400	NITROGEN FERTILIZER NUTRIENT	POUND	15.0
25000500	PHOSPHORUS FERTILIZER NUTRIENT	POUND	15.0
25000600	POTASSIUM FERTILIZER NUTRIENT	POUND	15.0
25100630	EROSION CONTROL BLANKET	SQ. YD.	963.0
25200100	SODDING	SQ. YD.	620.0
28000500	PERIMETER EROSION BARRIER	FOOT	758.5



PROP. DITCH SECTION (TYP.) X-X

AVG. BOTTOM OF DITCH =
 $(698.11 + 698.84 + 699.57 + 700.31 + 701.40) / 5$
 = 699.65

AVG. GROUND ELEVATION =
 $(701.58 + 701.43 + 701.27 + 701.31 + 701.40) / 5$
 = 701.40

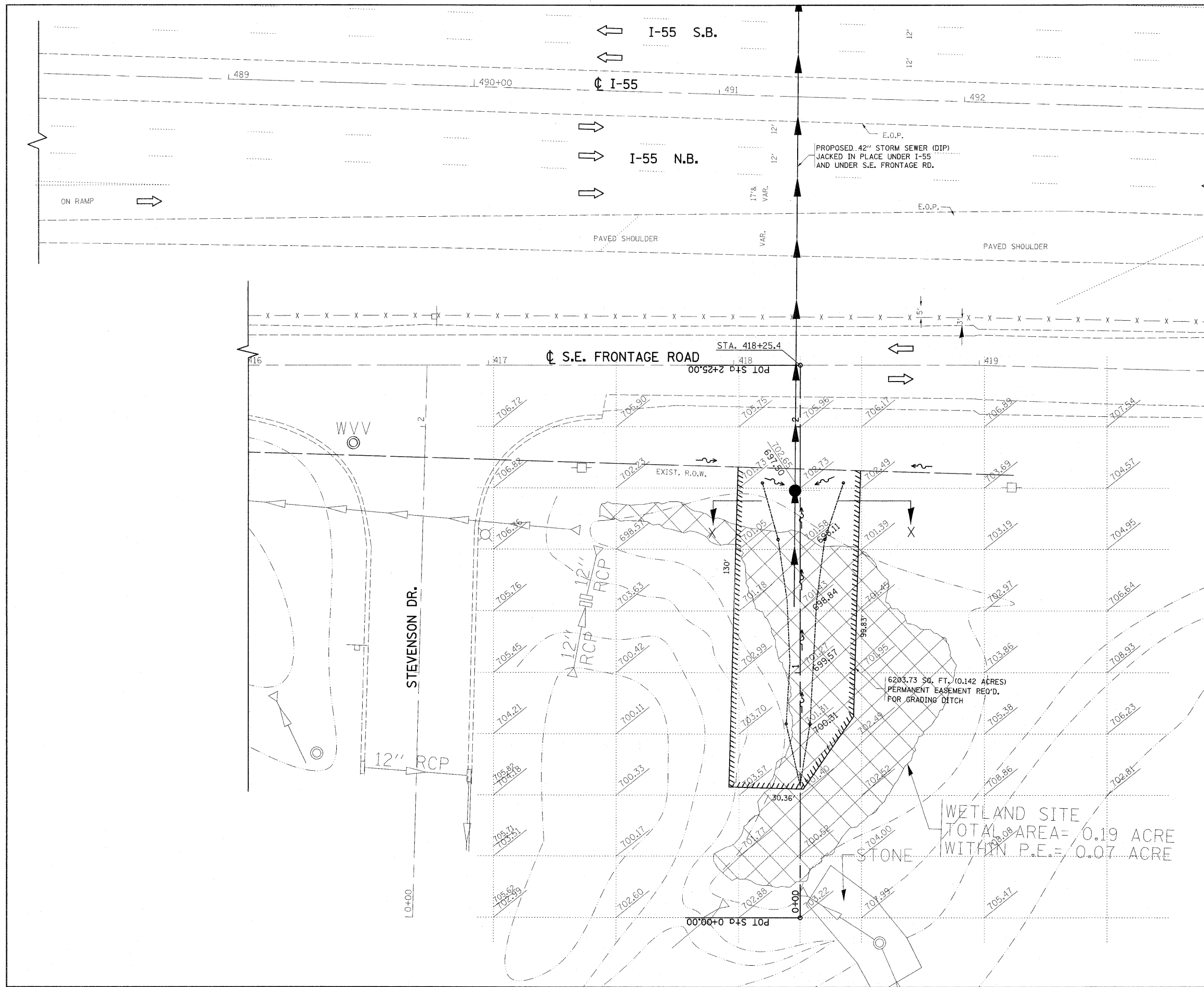
DEFF = 701.40 - 699.65 = 1.75' USE 1.5'

DITCH CROSS SECTION AREA =
 $((2+20)/2) \times 1.75' = 19.25$ SQ. FT.

LENGTH OF DITCH = 125'

QUANTITY OF DITCH EXCAVATION AT D/S =
 $125' \times 19.25$ SQ. FT. = 2406.25 CU.FT. = 89.1 CU. YD.
 (USE 89.5 CU. YD.)

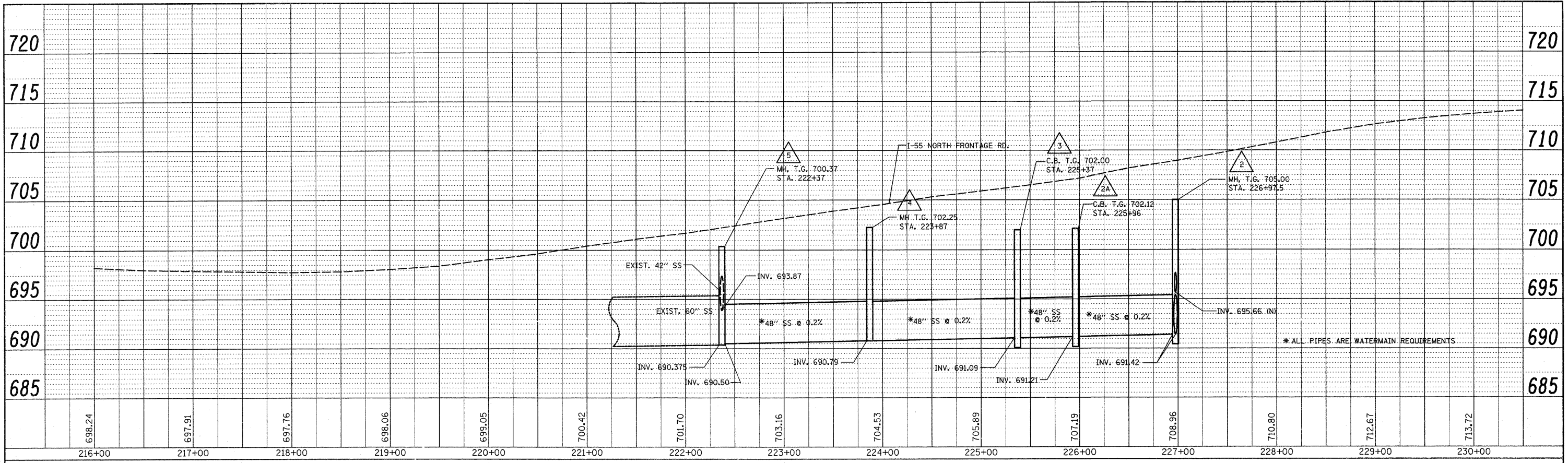
* PAID FOR AS EARTH EXCAVATION



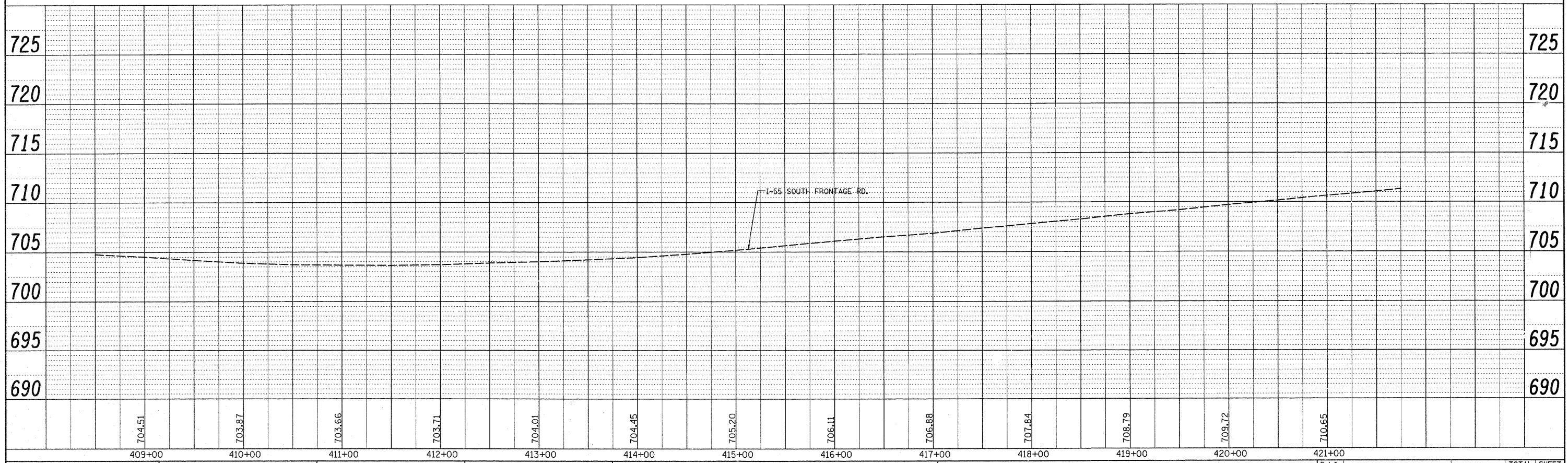
FILE NAME =	USER NAME = lsgsa	DESIGNED -	REVISED -	STATE OF ILLINOIS DEPARTMENT OF TRANSPORTATION	I-55 S.E. FRONTAGE RD. EXISTING GROUND ELEVATIONS SOUTH OF S.E. FRONTAGE RD. STA. 418+25 & DITCH LOCATION				F.A.I. RTE.	SECTION	COUNTY	TOTAL SHEETS	SHEET NO.
ci\pw\work\pwsdat\lsgsa\dms89282\0107409	ghr-dra\m.dgn	DRAWN -	REVISED -		55	29T-1	WILL	19	8				
	PLOT SCALE = 20.0000' / in.	CHECKED -	REVISED -		SCALE: 1"=20' SHEET NO. OF SHEETS STA. 418+25 TO STA. 418+25				CONTRACT NO. 60A56				
	PLOT DATE = 8/29/2011	DATE -	REVISED -		ILLINOIS FED. AID PROJECT								

FILE NAME =
 USER NAME =
 PLOT SCALE =
 PLOT DATE =

PLAN SURVEYED BY DATE
 NOTE BOOK NO. CHECKED BY
 P.T. OF WAY CHECKED BY
 ROAD FILE NAME



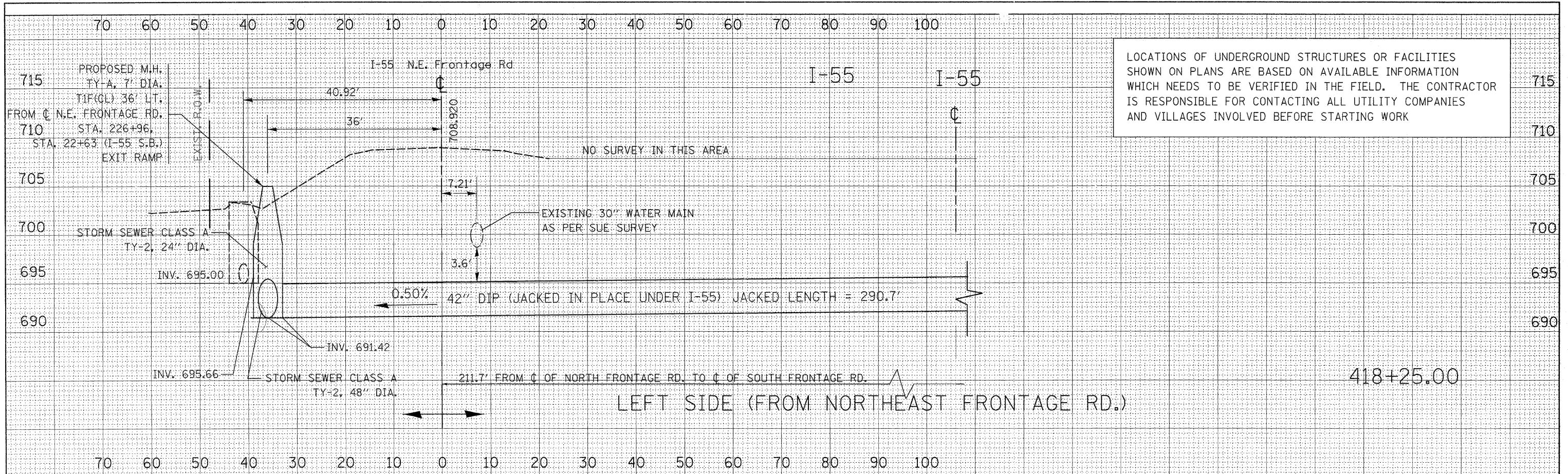
PROFILE SURVEYED BY DATE
 NOTE BOOK NO. CHECKED BY
 B.M. NOTED BY
 STRUCTURE NOTATIONS OKRD



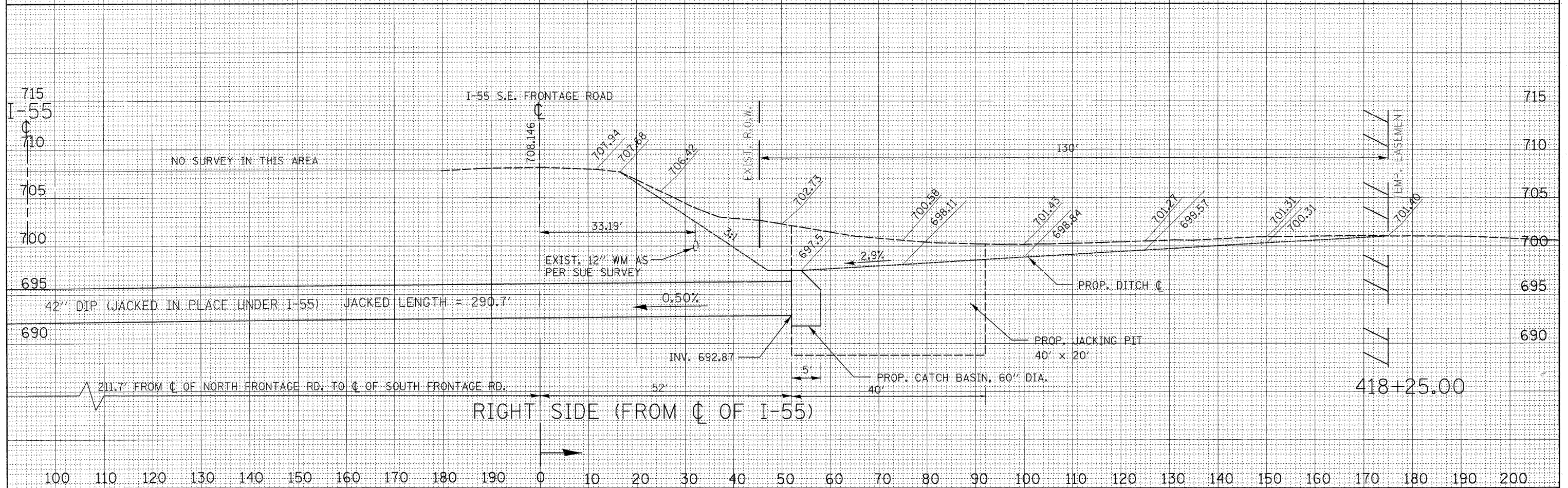
FILE NAME =	USER NAME = ul-rchkd	DESIGNED -	REVISED -	STATE OF ILLINOIS DEPARTMENT OF TRANSPORTATION	EXIST. & PROP. DRAINAGE PROFILE I-55 NORTH & SOUTH FRONTAGE RD.			F.A.I. RTE.	SECTION	COUNTY	TOTAL SHEETS	SHEET NO.
o:\pw-work\pwrzdot\ul-rchkd\dms89282\1107486-sh-t-drain.dgn		DRAWN -	REVISED -		55	29T-1	WILL	19	9			
PLOT SCALE = 50.0000' / 1"		CHECKED -	REVISED -		CONTRACT NO. 60A56							
PLOT DATE = 8/24/2011		DATE -	REVISED -		FED. ROAD DIST. NO. ILLINOIS FED. AID PROJECT							

SCALE: 1"=50' SHEET NO. OF SHEETS STA. TO STA.

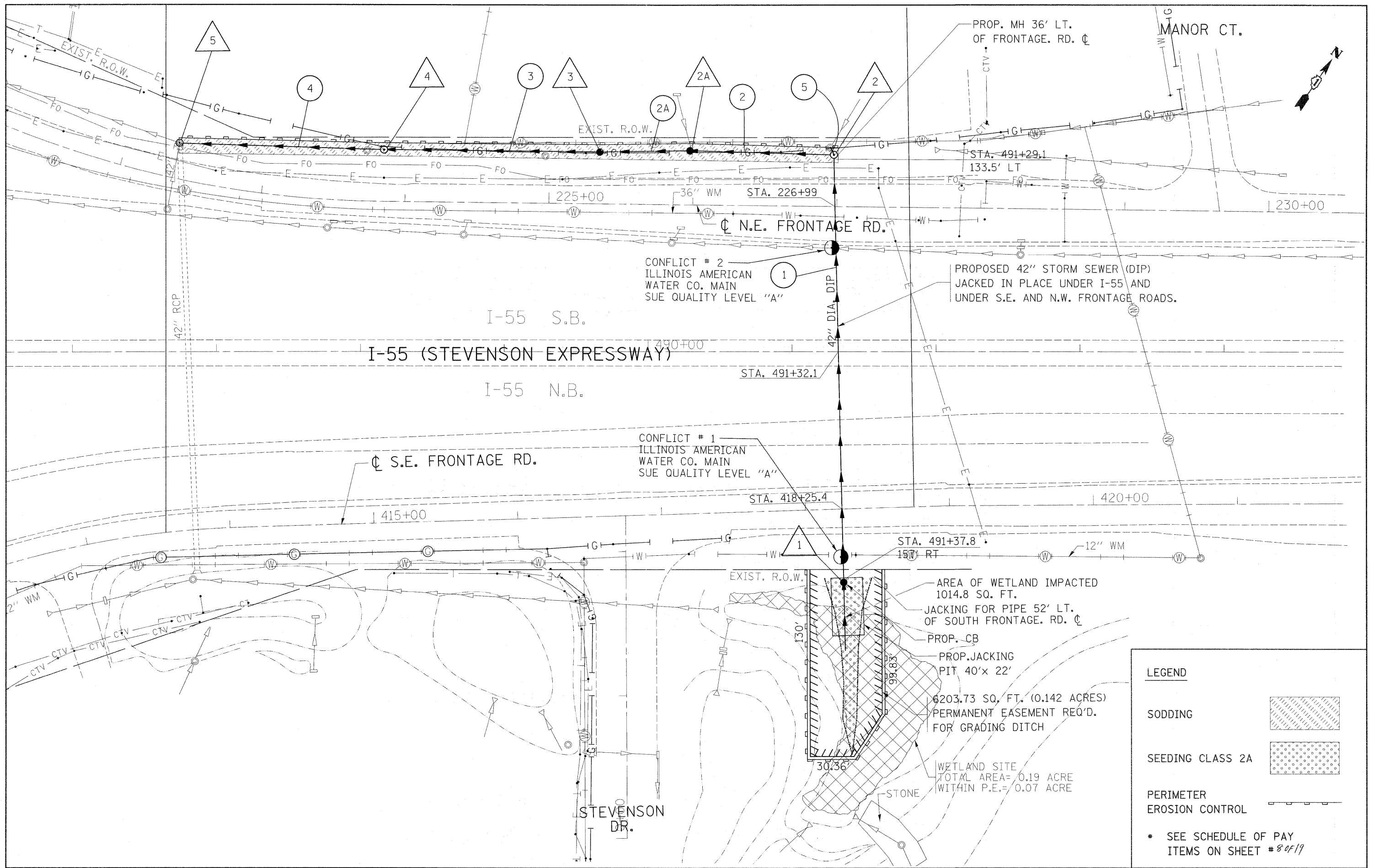
DATE	
BY	
FINAL SURVEY	
SURVEY PLOTTED	
NOTE BOOK	
AREAS CHECKED	
NO.	



DATE	
BY	
ORIGINAL SURVEY	
SURVEY PLOTTED	
NOTE BOOK	
AREAS CHECKED	
NO.	



FILE NAME =	USER NAME = ulrichkd	DESIGNED -	REVISED -	STATE OF ILLINOIS DEPARTMENT OF TRANSPORTATION	PROPOSED DETAILED CROSS SECTION OF STORM SEWER CROSSING I-55 AND N.E. AND S.E. FRONTAGE ROADS	F.A.I. RTE.	SECTION	COUNTY	TOTAL SHEETS	SHEET NO.	
ci:\pwwork\pwwork\ulrichkd\dms89282\0107406-sh	xshst-155frnt.dgn	DRAWN -	REVISED -			55	29T-1	WILL	19	10	
PLOT SCALE = 10.0000' / 1in.		CHECKED -	REVISED -			CONTRACT NO. 60A56					
PLOT DATE = 8/25/2011		DATE -	REVISED -			ILLINOIS FED. AID PROJECT					



LEGEND

SODDING

SEEDING CLASS 2A

PERIMETER EROSION CONTROL

* SEE SCHEDULE OF PAY ITEMS ON SHEET # 8 OF 19

FILE NAME =
 c:\pw_work\p\dot\1e\so\dms89282\010740

USER NAME = 1e\sa
 -sht-drain.dgn
 PLOT SCALE = 38.0000' / in.
 PLOT DATE = 8/29/2011

DESIGNED -
 DRAWN -
 CHECKED -
 DATE -

REVISED -
 REVISED -
 REVISED -
 REVISED -

**STATE OF ILLINOIS
 DEPARTMENT OF TRANSPORTATION**

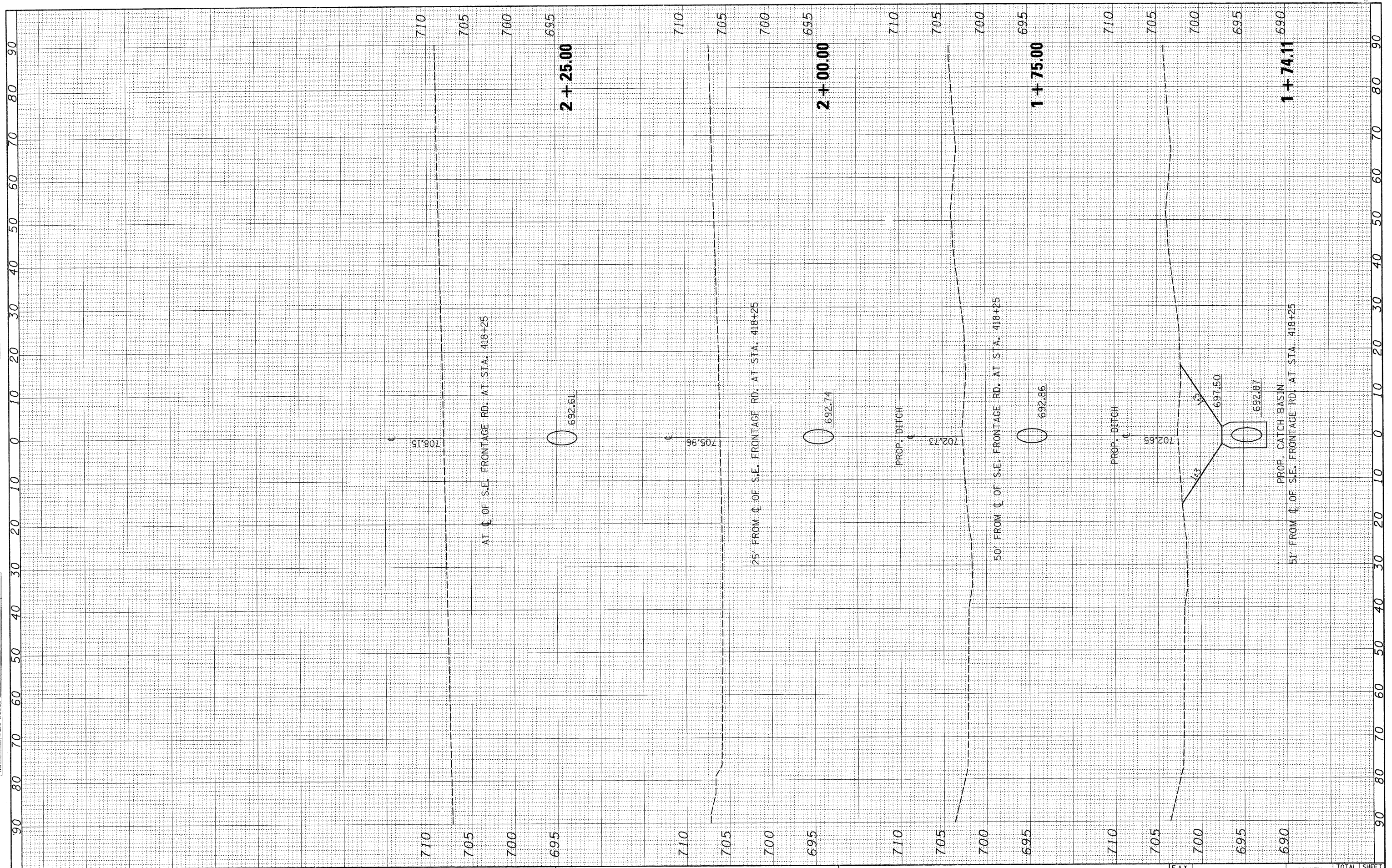
**EROSION CONTROL & SEDIMENT CONTROL PLAN
 I-55 NORTH & SOUTH FRONTAGE RD**

SCALE: 1"=30' SHEET NO. OF SHEETS STA. TO STA.

F.A.I. RTE.	SECTION	COUNTY	TOTAL SHEETS	SHEET NO.
55	29T-1	WILL	19	11
CONTRACT NO. 60A56			ILLINOIS FED. AID PROJECT	

FINAL SURVEY	SURVEYED	BY	DATE
NOTE BOOK NO.	PLANNED		
	FIELD		
	AREAS CHECKED		

ORIGINAL SURVEY	SURVEYED	BY	DATE
NOTE BOOK NO.	PLANNED		
	FIELD		
	AREAS CHECKED		



FILE NAME = c:\pwwork\pwwork\ulrichkd\dms99282\107486-sh

USER NAME = ulrichkd
 DESIGNED -
 DRAWN -
 CHECKED -
 DATE -

DESIGNED -
 DRAWN -
 CHECKED -
 DATE -

REVISIONS
 REVISED -
 REVISED -
 REVISED -
 REVISED -

**STATE OF ILLINOIS
 DEPARTMENT OF TRANSPORTATION**

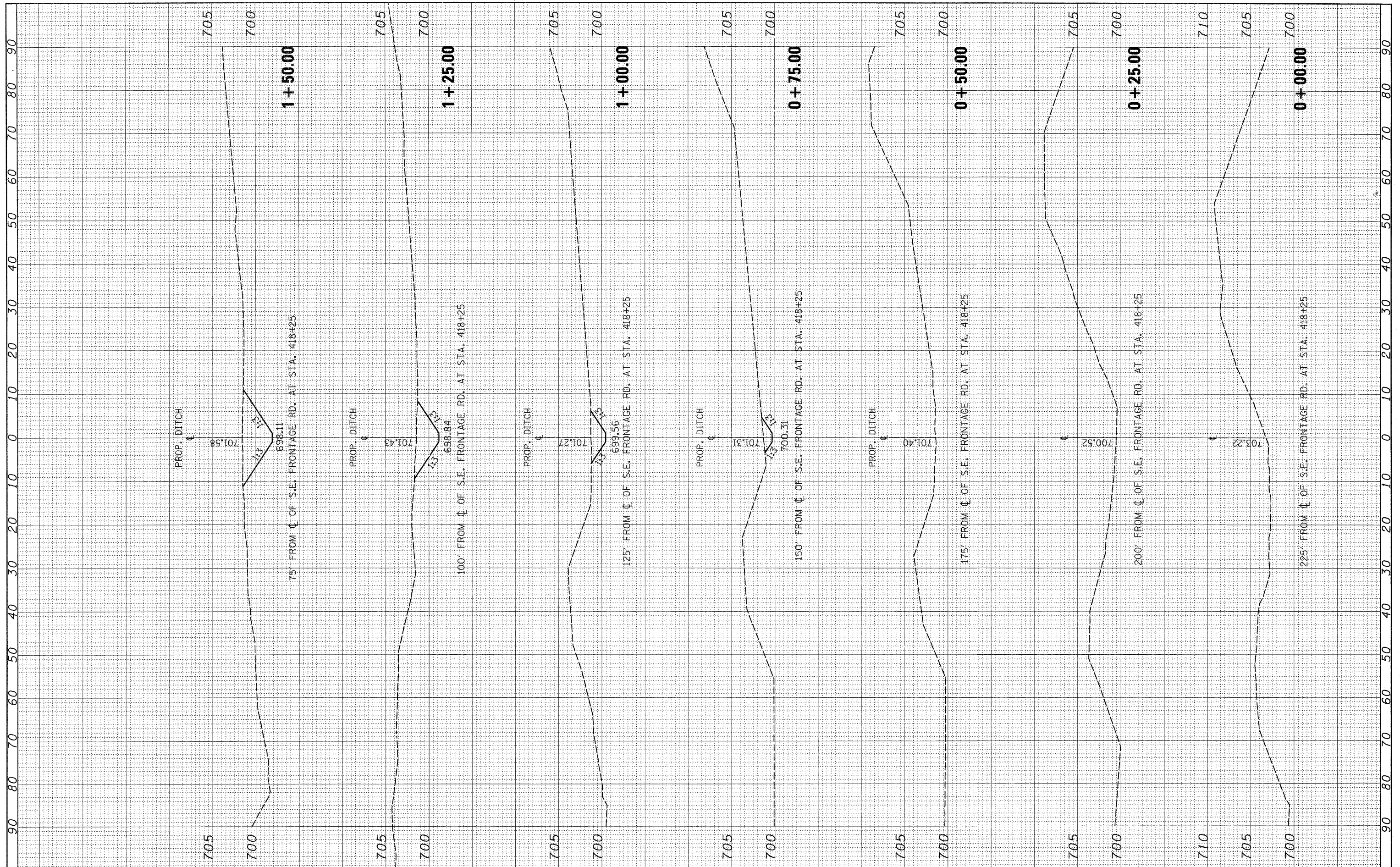
**CROSS SECTIONS
 I-55 DITCH**

SCALE: SHEET NO. OF SHEETS STA. 1+74.11 TO STA. 2+25.00

F.A.I. RTE. 55	SECTION 297-1	COUNTY WILL	TOTAL SHEETS 19	SHEET NO. 12
ILLINOIS FED. AID PROJECT			CONTRACT NO. 60A56	

FINAL SURVEY	BY	DATE
SURVEYED		
NOTE BOOK		
NO.		

ORIGINAL SURVEY	BY	DATE
SURVEYED		
NOTE BOOK		
NO.		



FILE NAME =
 c:\pwork\pwork\ulrichka\dms89282\0107405-sh-xasht-d1tohdgn

USER NAME = ulrichka
 DESIGNED -
 DRAWN -
 CHECKED -
 DATE -

DESIGNED -
 DRAWN -
 CHECKED -
 DATE -

REVISED -
 REVISED -
 REVISED -
 REVISED -

**STATE OF ILLINOIS
 DEPARTMENT OF TRANSPORTATION**

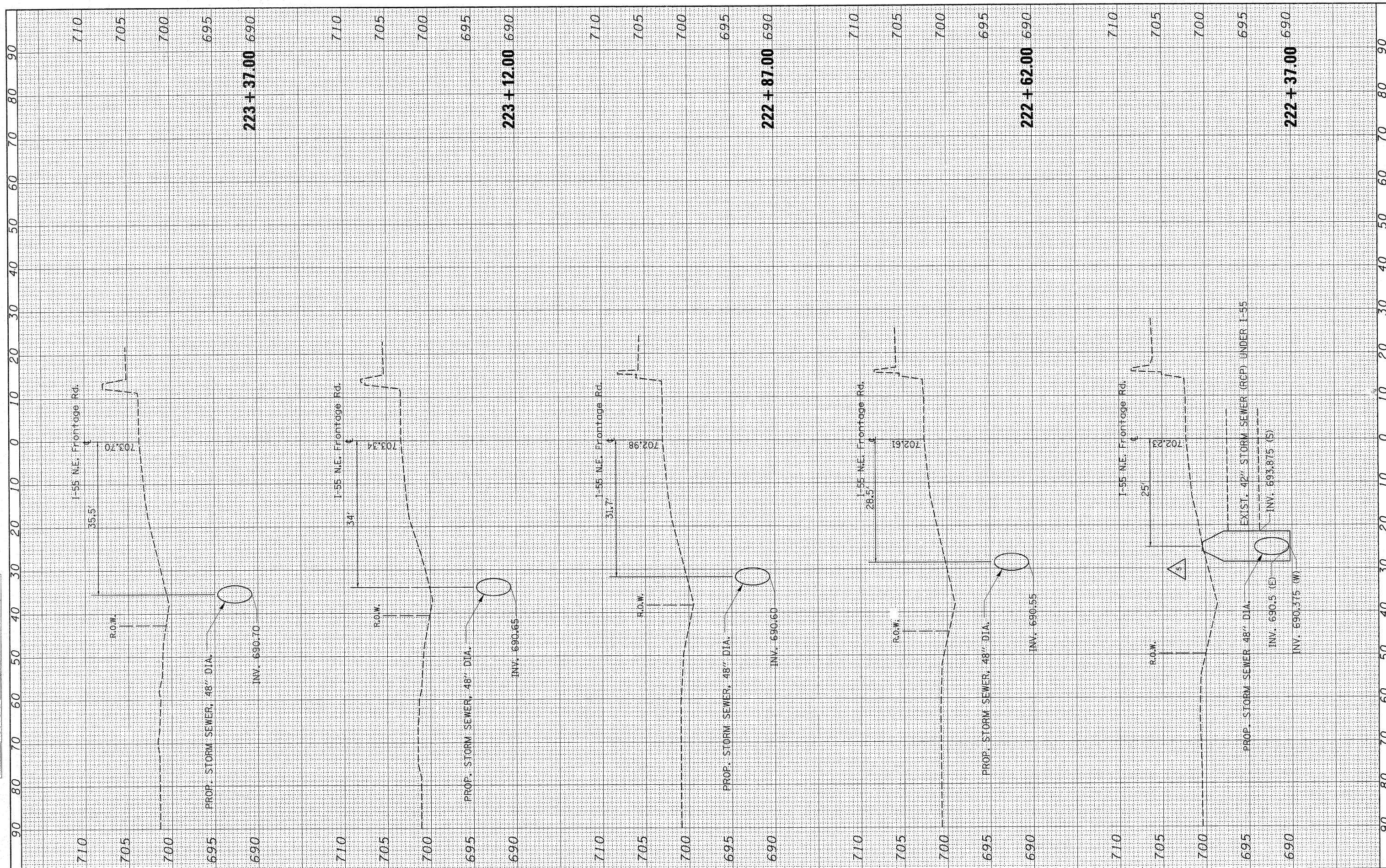
**CROSS SECTIONS
 I-55 DITCH**

SCALE: SHEET NO. OF SHEETS STA. +00.00 TO STA. 1+50.00

F.A. RTE.	SECTION	COUNTY	TOTAL SHEETS	SHEET NO.
55	297-1	WILL	19	13
CONTRACT NO. 60A56			ILLINOIS FED. AID PROJECT	

FINAL SURVEY	DATE
SURVEYED	BY
PLOTTED	
REPLICATED	
NOTE BOOK	
AREAS CHECKED	
AREAS CHECKED	
NO.	

ORIGINAL SURVEY	DATE
SURVEYED	BY
PLOTTED	
REPLICATED	
NOTE BOOK	
AREAS CHECKED	
AREAS CHECKED	
NO.	



FILE NAME = c:\pwwork\pwwork\baueord\dm89202\0107406-sh\kshst-155nfrnt.dgn

USER NAME = baueord
 DESIGNED -
 DRAWN -
 CHECKED -
 DATE -

DESIGNED -
 DRAWN -
 CHECKED -
 DATE -

REVISED -
 REVISED -
 REVISED -
 REVISED -

**STATE OF ILLINOIS
 DEPARTMENT OF TRANSPORTATION**

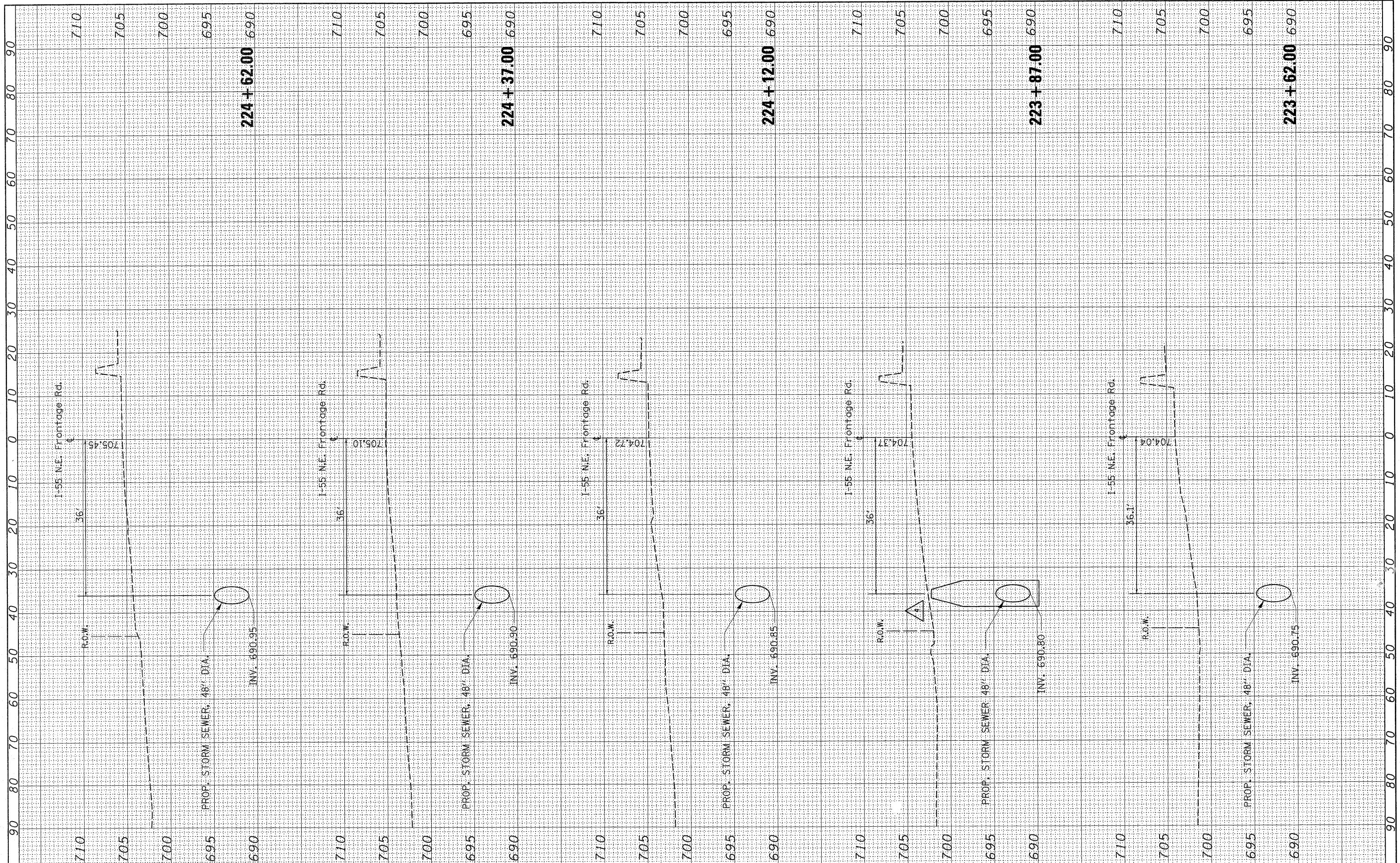
**CROSS SECTIONS
 I-55 NORTH FRONTAGE RD.**

SCALE: SHEET NO. OF SHEETS STA. 222+37.00 TO STA. 223+37.00

F.A.I. RTE.	SECTION	COUNTY	TOTAL SHEETS	SHEET NO.
55	29 T-1	WILL	19	14
ILLINOIS FED. AID PROJECT			CONTRACT NO. 60A56	

FINAL SURVEY	BY	DATE
NOTE BOOK		
AREAS CHECKED		
NO.		

ORIGINAL SURVEY	BY	DATE
NOTE BOOK		
AREAS CHECKED		
NO.		



FILE NAME =
 c:\pwwork\pwwork\bauearl\dms89282\107406-sht\ssht-155nfrnt.dgn

USER NAME = bauearl
 DESIGNED -
 DRAWN -
 CHECKED -
 DATE -

REVISIONS
 REVISED -
 REVISED -
 REVISED -
 REVISED -

PLOT SCALE = 10.0000' / 1"
 PLOT DATE = 8/10/2011

**STATE OF ILLINOIS
 DEPARTMENT OF TRANSPORTATION**

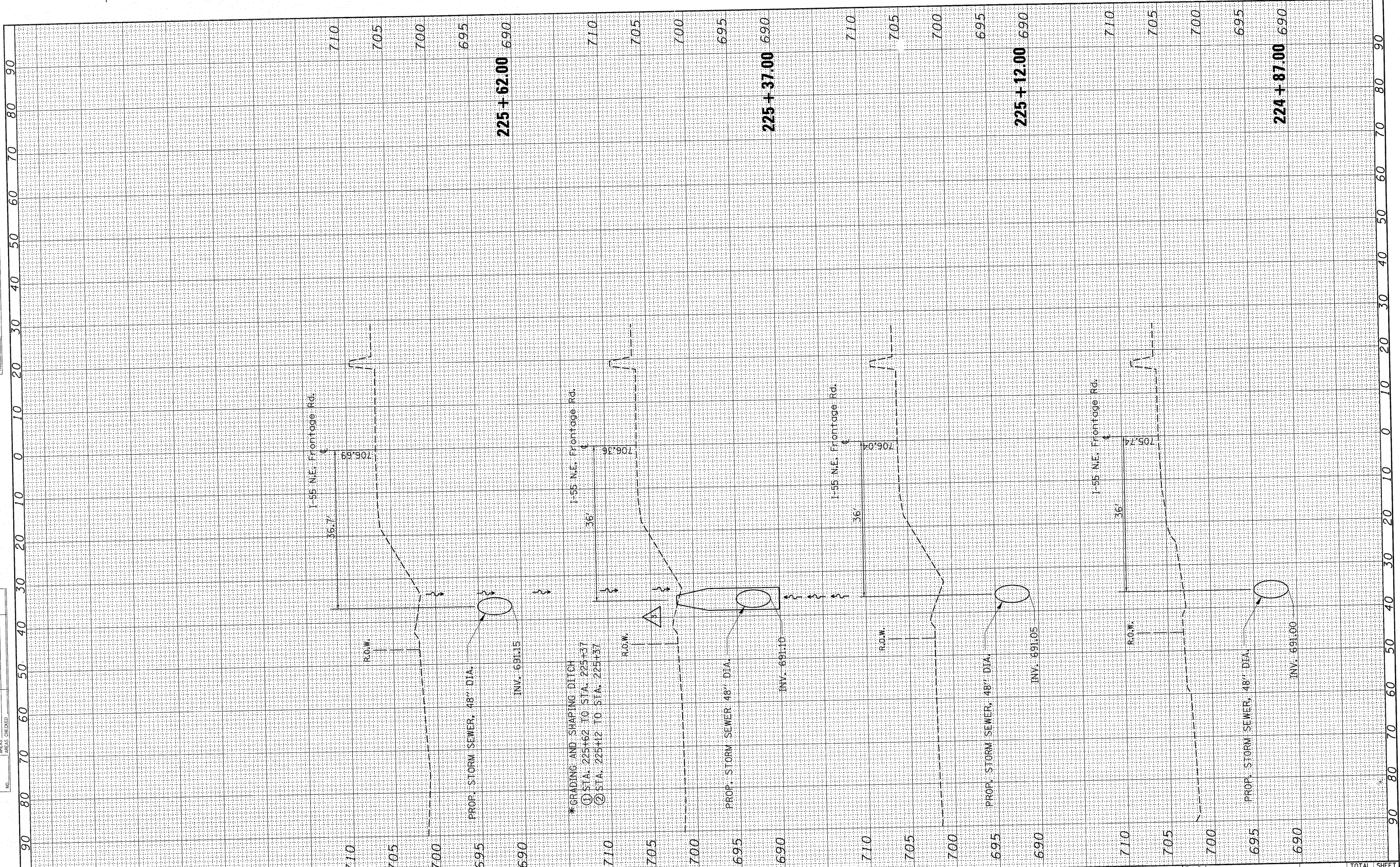
**CROSS SECTIONS
 I-55 NORTH FRONTAGE RD.**

SCALE: SHEET NO. OF SHEETS STA. 223+62.00 TO STA. 224+62.00

F.A.I. RTE.	SECTION	COUNTY	TOTAL SHEETS	SHEET NO.
55	29 T-1	WILL	19	15
ILLINOIS FED. AID PROJECT			CONTRACT NO. 60A56	

FINAL SURVEY	SUPERVED	BY	DATE
NOTE BOOK NO.	PLOTTED		
	AREAS		
	CHECKED		

ORIGINAL SURVEY	SUPERVED	BY	DATE
NOTE BOOK NO.	PLOTTED		
	AREAS		
	CHECKED		



FILE NAME = c:\pwwork\pwwork\baured\dm89282\0107406-sh1
 USER NAME = baured
 PLOT SCALE = 10,0000' / 1" =
 PLOT DATE = 8/10/2011

DESIGNED -	REVISD -
DRAWN -	REVISD -
CHECKED -	REVISD -
DATE -	REVISD -

**STATE OF ILLINOIS
DEPARTMENT OF TRANSPORTATION**

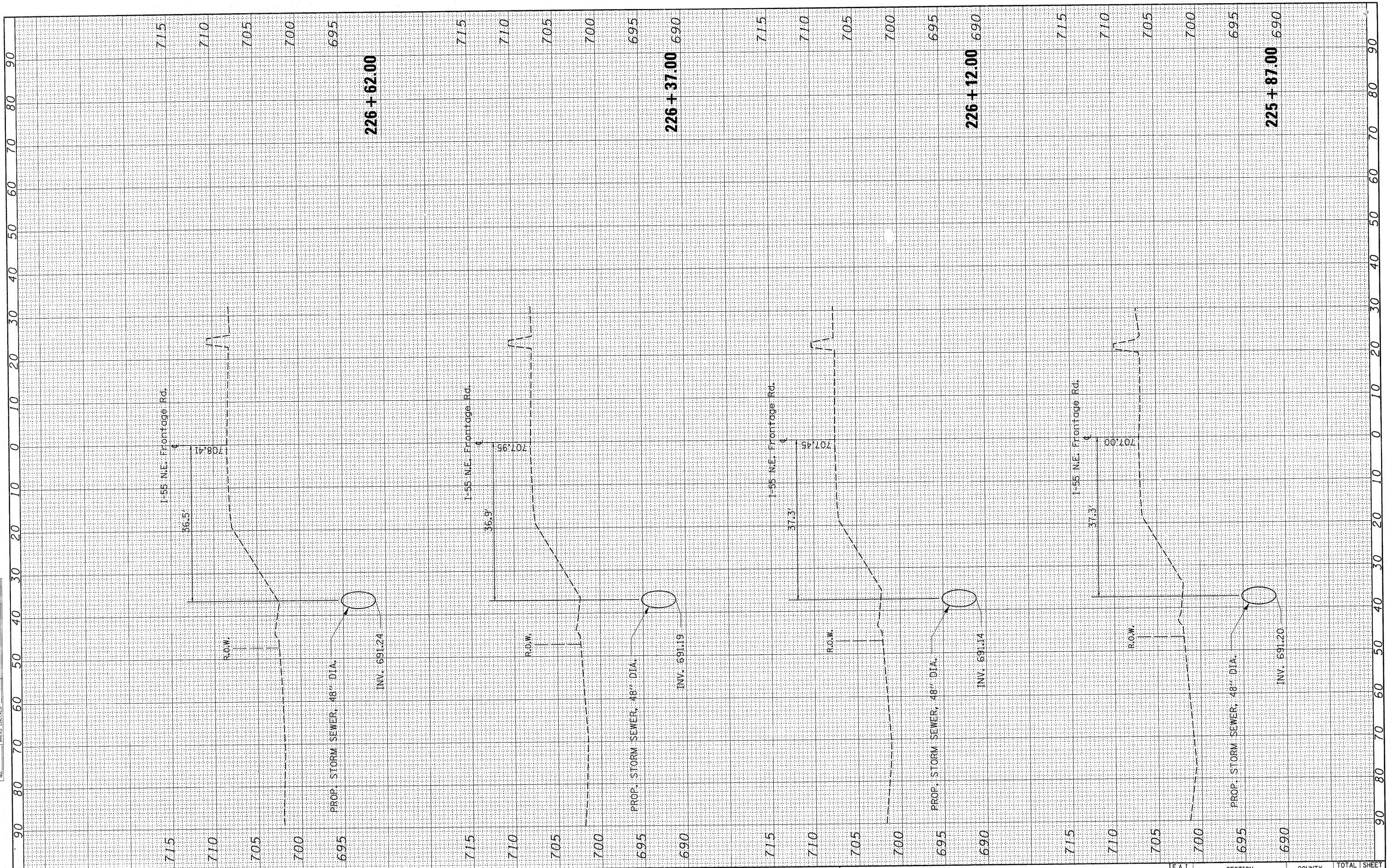
**CROSS SECTIONS
I-55 NORTH FRONTAGE RD.**

SCALE: SHEET NO. OF SHEETS STA. 224+87.00 TO STA. 225+62.00

F.A.T. RTE. 55	SECTION 29 T-1	COUNTY WILL	TOTAL SHEETS 19	SHEET NO. 16
ILLINOIS FED. AID PROJECT			CONTRACT NO. 60A56	

FINAL SURVEY	SURVEYED	BY	DATE
NOTE BOOK	PLOTTED		
NO.	TEMPLATE		
	AREAS CHECKED		

ORIGINAL SURVEY	SURVEYED	BY	DATE
NOTE BOOK	PLOTTED		
NO.	TEMPLATE		
	AREAS CHECKED		



FILE NAME = es:\p\work\p\dot\b\auerdl\dms89282\0107406-sht

USER NAME = bauerdl
 DESIGNED -
 DRAWN -
 CHECKED -
 DATE - 8/18/2011

DESIGNED -
 DRAWN -
 CHECKED -
 DATE -

REVISED -
 REVISED -
 REVISED -
 REVISED -

**STATE OF ILLINOIS
 DEPARTMENT OF TRANSPORTATION**

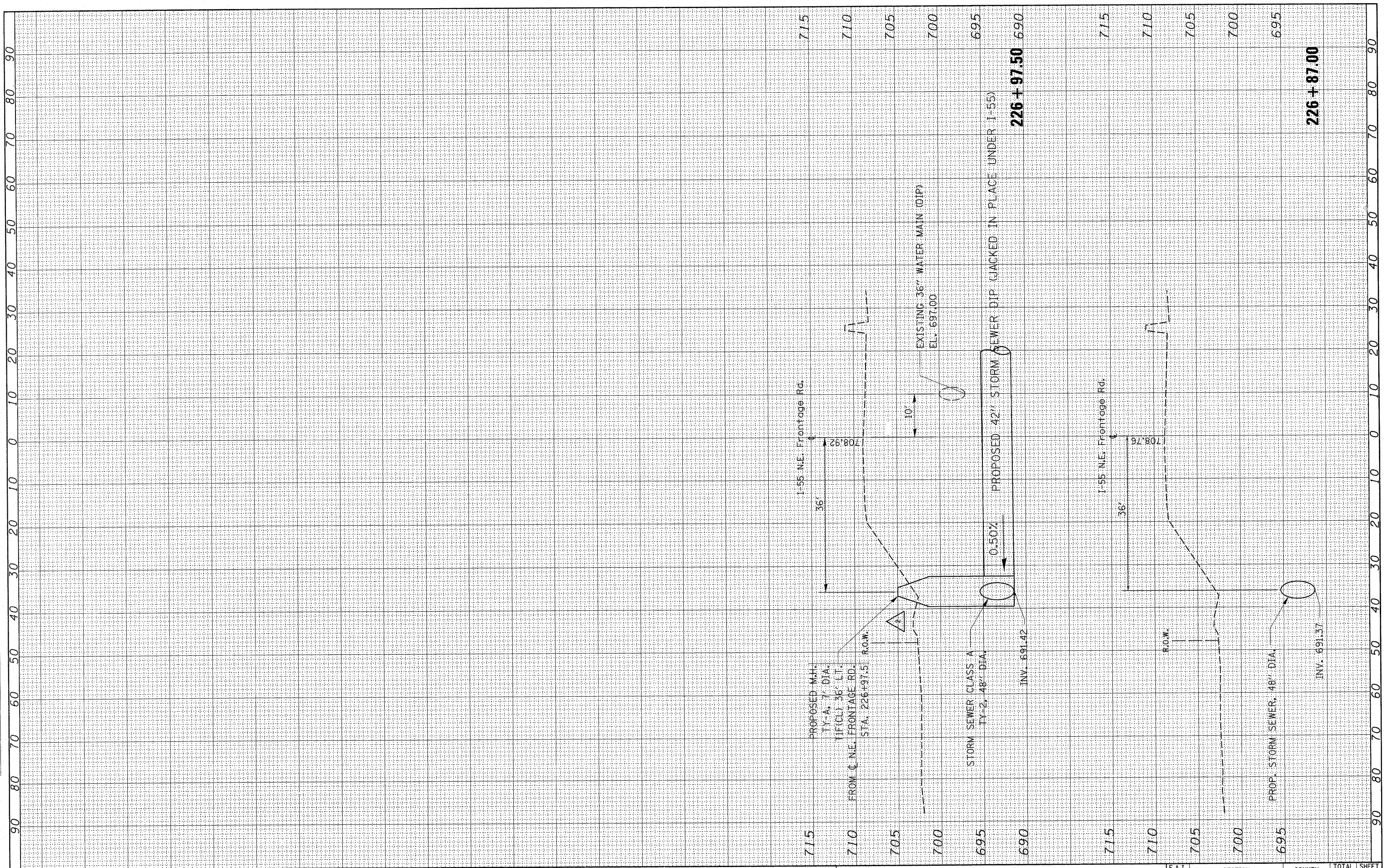
**CROSS SECTIONS
 I-55 NORTH FRONTAGE RD.**

SCALE: SHEET NO. OF SHEETS STA. 225+87.00 TO STA. 226+62.00

F.A.I. RTE. 55	SECTION 29 T-1	COUNTY WILL	TOTAL SHEETS 19	SHEET NO. 17
ILLINOIS FED. AID PROJECT			CONTRACT NO. 60A56	

FINAL SURVEY	SURVEYED	BY	DATE
NOTE BOOK	PLOTTED		
NO.	TEMPLATE		
	AREAS CHECKED		

ORIGINAL SURVEY	SURVEYED	BY	DATE
NOTE BOOK	PLOTTED		
NO.	TEMPLATE		
	AREAS CHECKED		



FILE NAME =
 c:\pw_work\pwidot\baueord\dms89282\0107406-ah

USER NAME = baueord
 sshot:155frnt.dgn
 PLOT SCALE = 10.0000 // in.
 PLOT DATE = 8/10/2011

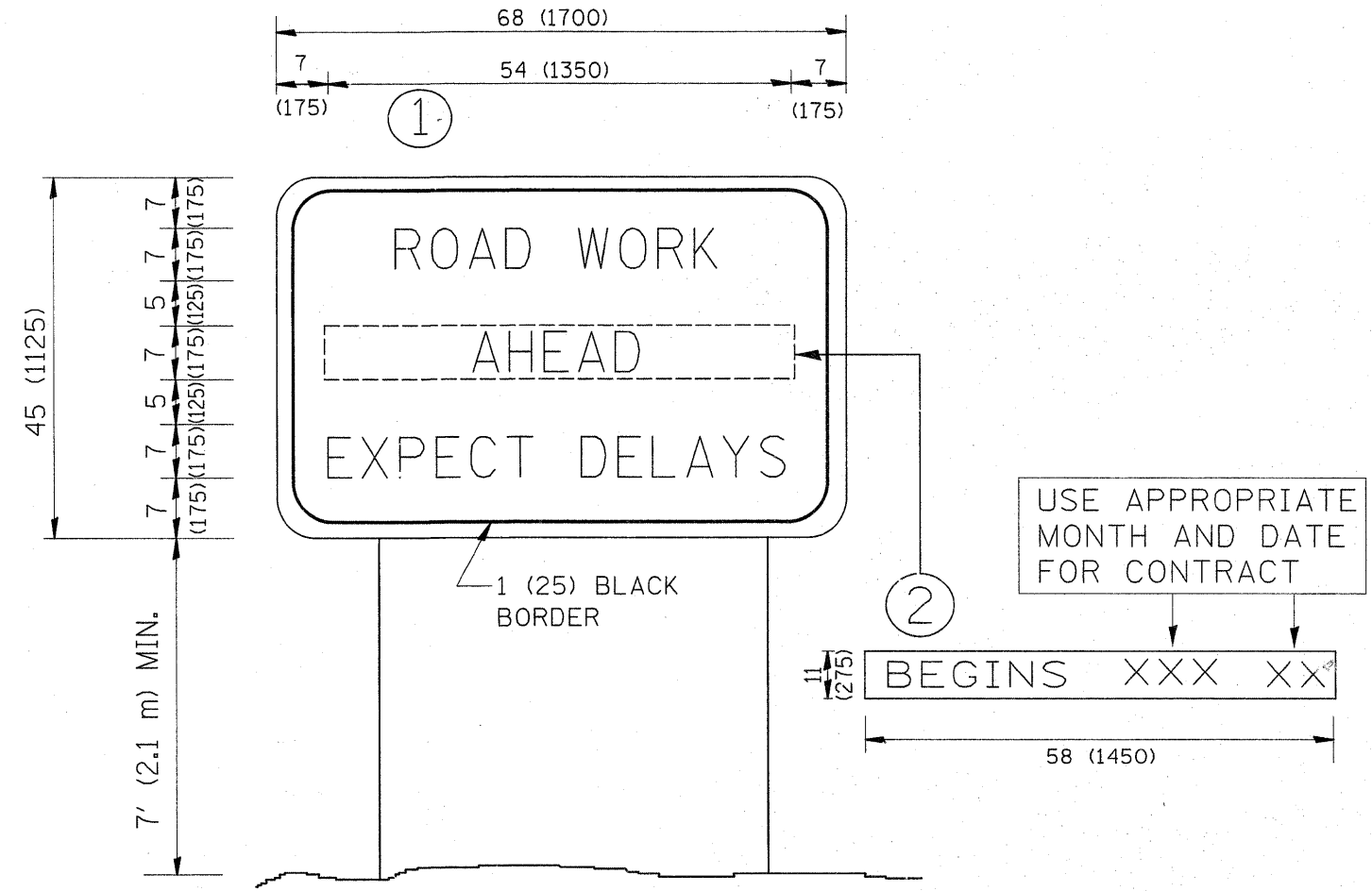
DESIGNED -
 DRAWN -
 CHECKED -
 DATE -

REVISED -
 REVISED -
 REVISED -
 REVISED -

**STATE OF ILLINOIS
 DEPARTMENT OF TRANSPORTATION**

**CROSS SECTIONS
 I-55 NORTH FRONTAGE RD.**
 SCALE: SHEET NO. OF SHEETS STA. 226+87.00 TO STA. 226+97.50

F.A.I. RTE.	SECTION	COUNTY	TOTAL SHEETS	SHEET NO.
55	29 T-1	WILL	19	18
ILLINOIS FED. AID PROJECT			CONTRACT NO. 60A56	



NOTES:

1. USE BLACK LETTERING ON ORANGE BACKGROUND.
2. ERECT SIGNS IN ADVANCE OF THE LOCATION FOR THE "ROAD CONSTRUCTION AHEAD" SIGN AT LOCATIONS AS DIRECTED BY THE ENGINEER.
3. ERECT SIGN ① WITH INSTALLED PANEL ② ONE WEEK PRIOR TO THE START OF CONSTRUCTION.
4. REMOVE PANEL ② SOON AFTER THE START OF CONSTRUCTION.
5. SEE SPECIAL PROVISION FOR "TEMPORARY INFORMATION SIGNING" FOR ADDITIONAL INFORMATION.
6. ONE SIGN ASSEMBLY EQUALS 25.70 SQ. FT. (2.3 SQ. M.)
7. SHALL BE PAID FOR AS TEMPORARY INFORMATION SIGNING.

ALL DIMENSIONS ARE IN INCHES (MILLIMETERS) UNLESS OTHERWISE SHOWN.

FILE NAME =	USER NAME = ulrichkd	DESIGNED -	REVISED - R. MIRS 09-15-97	STATE OF ILLINOIS DEPARTMENT OF TRANSPORTATION	ARTERIAL ROAD INFORMATION SIGN	F.A.I. RTE.	SECTION	COUNTY	TOTAL SHEETS	SHEET NO.
ct:\pwwork\p\midot\ULRICHKD\dms89284\Drawings\Std.dgn	DRAWN -	REVISED - R. MIRS 12-11-97	55			29T-1	WILL	19	19	
FLOT SCALE = 50.0000' / IN.	CHECKED -	REVISED - T. RAMMACHER 02-02-99	TC-22			CONTRACT NO. 60A56				
FLOT DATE = 7/12/2010	DATE -	REVISED - C. JUCIUS 01-31-07	SCALE: NONE			SHEET NO. 1 OF 1 SHEETS	STA.	TO STA.	FED. ROAD DIST. NO. 1 ILLINOIS FED. AID PROJECT	