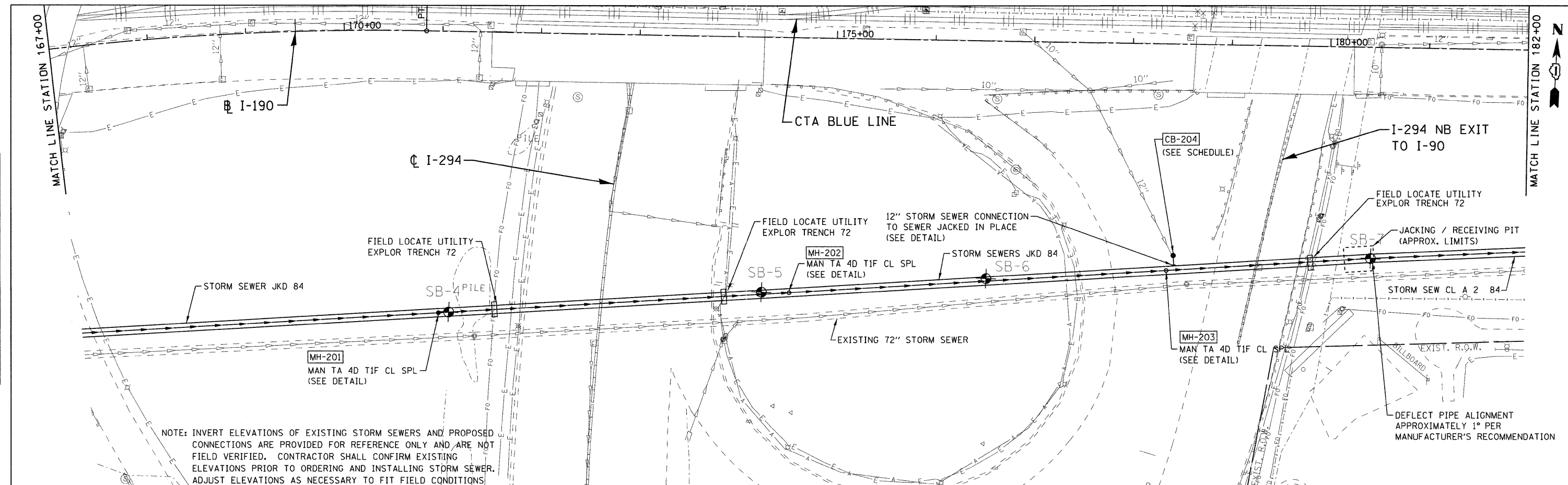
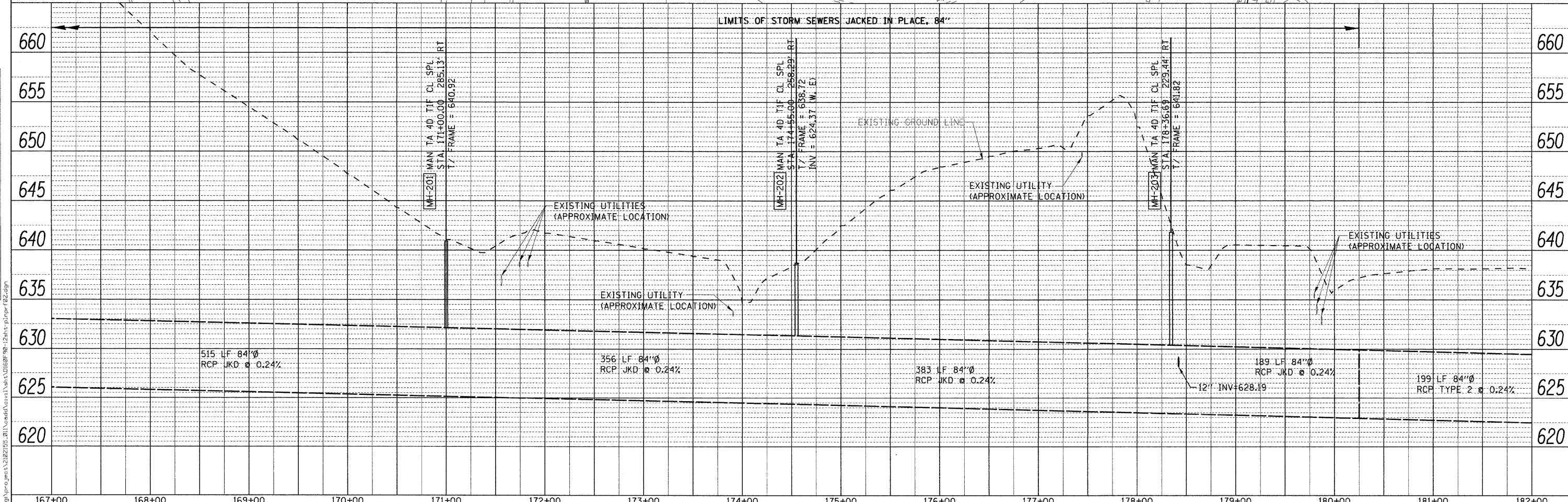


DATE	
BY	
CHECKED	
DESIGNED	
APPROVED	
PROJECT	
NO.	

DATE	
BY	
CHECKED	
DESIGNED	
APPROVED	
PROJECT	
NO.	



NOTE: INVERT ELEVATIONS OF EXISTING STORM SEWERS AND PROPOSED CONNECTIONS ARE PROVIDED FOR REFERENCE ONLY AND ARE NOT FIELD VERIFIED. CONTRACTOR SHALL CONFIRM EXISTING ELEVATIONS PRIOR TO ORDERING AND INSTALLING STORM SEWER. ADJUST ELEVATIONS AS NECESSARY TO FIT FIELD CONDITIONS.



LIMITS OF STORM SEWERS JACKED IN PLACE, 84"

	USER NAME = 2bookd	DESIGNED - DJB	REVISED -	STATE OF ILLINOIS DEPARTMENT OF TRANSPORTATION	PUMP STATION 24 STORM SEWER IMPROVEMENTS STORM SEWER PLAN AND PROFILE	F.A.I. RTE. 190	SECTION 0102.5-T	COUNTY COOK	TOTAL SHEETS 41	SHEET NO. 13
	PLOT SCALE = 50.00 ft / IN.	CHECKED - DAK	REVISED -			SCALE: 50.00 ft / IN. SHEET NO. OF SHEETS STA. TO STA.	FED. ROAD DIST. NO. 1	ILLINOIS FED. AID PROJECT		
	PLOT DATE = 12/11/2011	DATE - 09/07/11	REVISED -						CONTRACT NO. 60F90	

FILE NAME = g:\p\proj\21022155_211\enad\enad1\enad1\dwg\p12\enad\p12.rvt