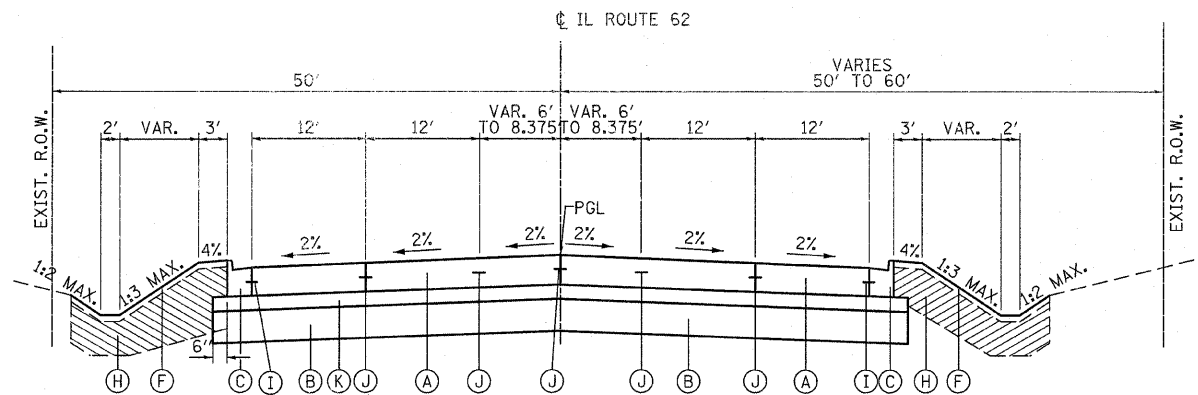


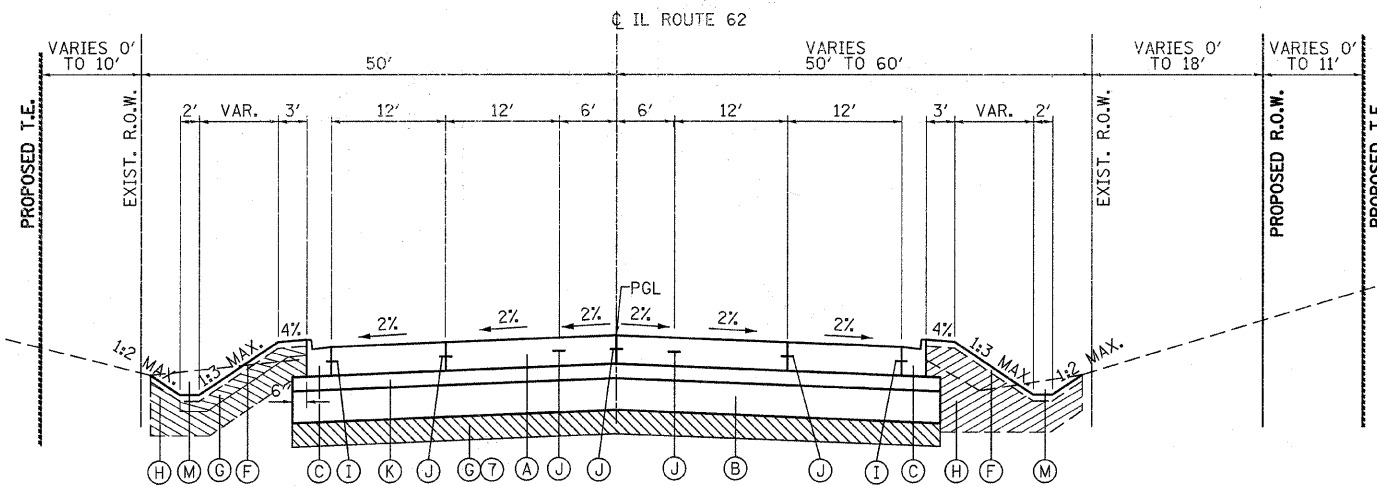
PLAN SHEETS PLOTTED BY DATE
 CHECKED BY DATE
 ALIGNED BY DATE
 NOTE BOOK NO.
 FILE NAME

PLAN SHEETS PLOTTED BY DATE
 CHECKED BY DATE
 ALIGNED BY DATE
 NOTE BOOK NO.
 FILE NAME



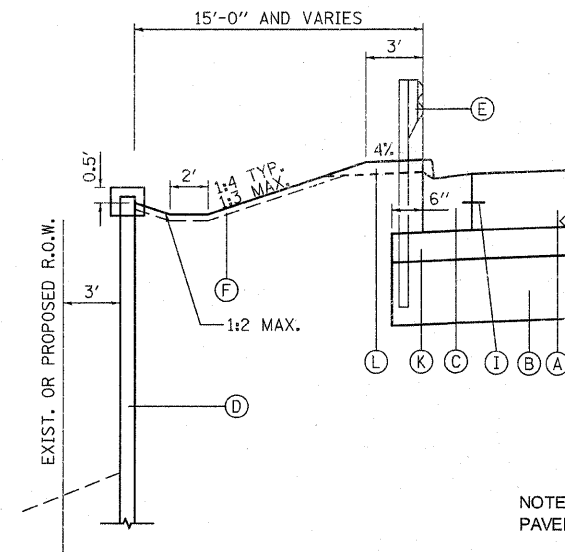
PROPOSED TYPICAL SECTION

ILLINOIS ROUTE 62 (ALGONQUIN ROAD)
 STA. 481+01.80 TO STA 482+00
 STA. 534+40 TO STA 535+91.80



PROPOSED TYPICAL SECTION

ILLINOIS ROUTE 62 (ALGONQUIN ROAD)
 STA. 482+00 TO STA 534+40



TYPICAL SECTION
 DETAIL FOR PROPOSED
 RETAINING WALL AND GUARDRAIL

PROPOSED LEGEND

- (A) PCC PAVEMENT 9 1/2" (JOINTED) (EXTENDED LIFE PAVEMENT)
- (B) AGGREGATE SUBGRADE, SPECIAL (12" THICKNESS, EXTENDED LIFE PAVEMENT)
- (C) COMB. CURB & GUTTER B-6.24 (FOR LOCATIONS OF DEPRESSED CURB AT TRAFFIC BARRIER TERMINALS TYPE 1A SPECIAL, SEE PLANS)
- (D) PROPOSED PERMANENT STEEL RETAINING WALL W/ CONCRETE CAP (SEE STRUCTURAL PLANS)
- (E) STEEL PLATE BEAM GUARDRAIL, TYPE A
- (F) RESTORATION LANDSCAPING:
 - EROSION CONTROL BLANKET
 - SEEDING CLASS 2A, 4 OR 4B (SEE PLANS)
 - TOPSOIL 4" AND/OR COMPOST 2"
 - PLANTING
- (G) POROUS GRANULAR EMBANKMENT, SUBGRADE WITH GEOTECHNICAL FABRIC FOR GROUND STABILIZATION
- (H) FILL EMBANKMENT (EXCESS EARTH EXCAVATION/FURNISHED EXCAVATION (PRE-STAGE))
- (I) #6 TIE BARS, 24" LONG @ 24" C-C (INCIDENTAL)
- (J) #8 TIE BARS
- (K) STABILIZED SUBBASE - HOT-MIX ASPHALT, 4 1/2" (EXTENDED LIFE PAVEMENT)
- (L) AGGREGATE SHOULDERS, TYPE B 10"
- (M) EARTH EXCAVATION

NOTE: IF THE CONTRACTOR CHOOSES TO USE CONCRETE FOR THE TEMPORARY PAVEMENT THE THICKNESS SHALL BE 10".

HOT-MIX ASPHALT MIXTURE REQUIREMENTS	
MIXTURE TYPE	AIR VOIDS
STABILIZED SUBBASE **	
STABILIZED SUBBASE - HOT-MIX ASPHALT, 4-1/2" (N50) (IL-19mm)	3% @ 50 Gyr.
DRIVEWAY PAVEMENT	
HOT-MIX ASPHALT SURFACE COURSE, MIX "C", N50 2" (IL-9.5mm)	4% @ 50 Gyr.
HOT-MIX ASPHALT BASE COURSE (HMA BINDER IL-19mm): PE-6"; CE-8"	4% @ 50 Gyr.
TEMPORARY PAVEMENT	
HOT-MIX ASPHALT SURFACE COURSE, MIX "D", N50 (IL-9.5MM) 1-1/2"	4% @ 50 Gyr.
HOT-MIX ASPHALT BINDER IL-19MM 8-1/2"	4% @ 50 Gyr.
MEDIAN	
HOT-MIX ASPHALT SURFACE COURSE, MIX "C", N50 4" (IL-9.5mm)	4% @ 50 Gyr.

** SEE SPECIAL PROVISION

THE UNIT WEIGHT USED TO CALCULATE ALL HMA SURFACE MIXTURE QUANTITIES IS 112 LBS/SQ YD/IN.

The "AC Type" for Polymerized HMA Mixes SHALL BE "SBS/SBR PG 70 -22" AND FOR NON-POLYMERIZED HMA THE "AC TYPE" shall be "PG 64 -22" UNLESS modified by District ONE Special Provisions.

FOR "PERCENT OF RAP" SEE DISTRICT ONE SPECIAL PROVISIONS.

PAVEMENT DESIGN

ITEM	IL-62
STRUCTURAL DESIGN TRAFFIC (2020)	33,500
ROAD CLASSIFICATION	I
PASSENGER CARS	32,060
SINGLE UNITS	705
MULTIPLE UNITS	735
TRAFFIC FACTOR	IL-62
DESIGN THICKNESS	9.5+4.5+12

THICKNESS: PCC PAVEMENT, STAB SUBBASE-HMA & AGGREGATE SUBGRADE

FILE NAME = ...\\D168135-sht-typical02.dgn



DESIGNED	ADW	REVISED	- ADW; 9/28/11
DRAWN	MHL	REVISED	-
CHECKED	RJD	REVISED	-
DATE	JUNE 30, 2011	REVISED	-

STATE OF ILLINOIS
 DEPARTMENT OF TRANSPORTATION

IL RTE 62 (ALGONQUIN RD.) FROM EASTING'S WAY TO PENNY RD.
 TYPICAL SECTIONS

SCALE: N.T.S. SHEET NO. 2 OF 2 SHEETS STA. TO STA.

F.A.P. RTE.	SECTION	COUNTY	TOTAL SHEETS	SHEET NO.
339	116 Y-1-R-1	COOK	122	10
CONTRACT NO. 60135				
ILLINOIS FED. AID PROJECT				