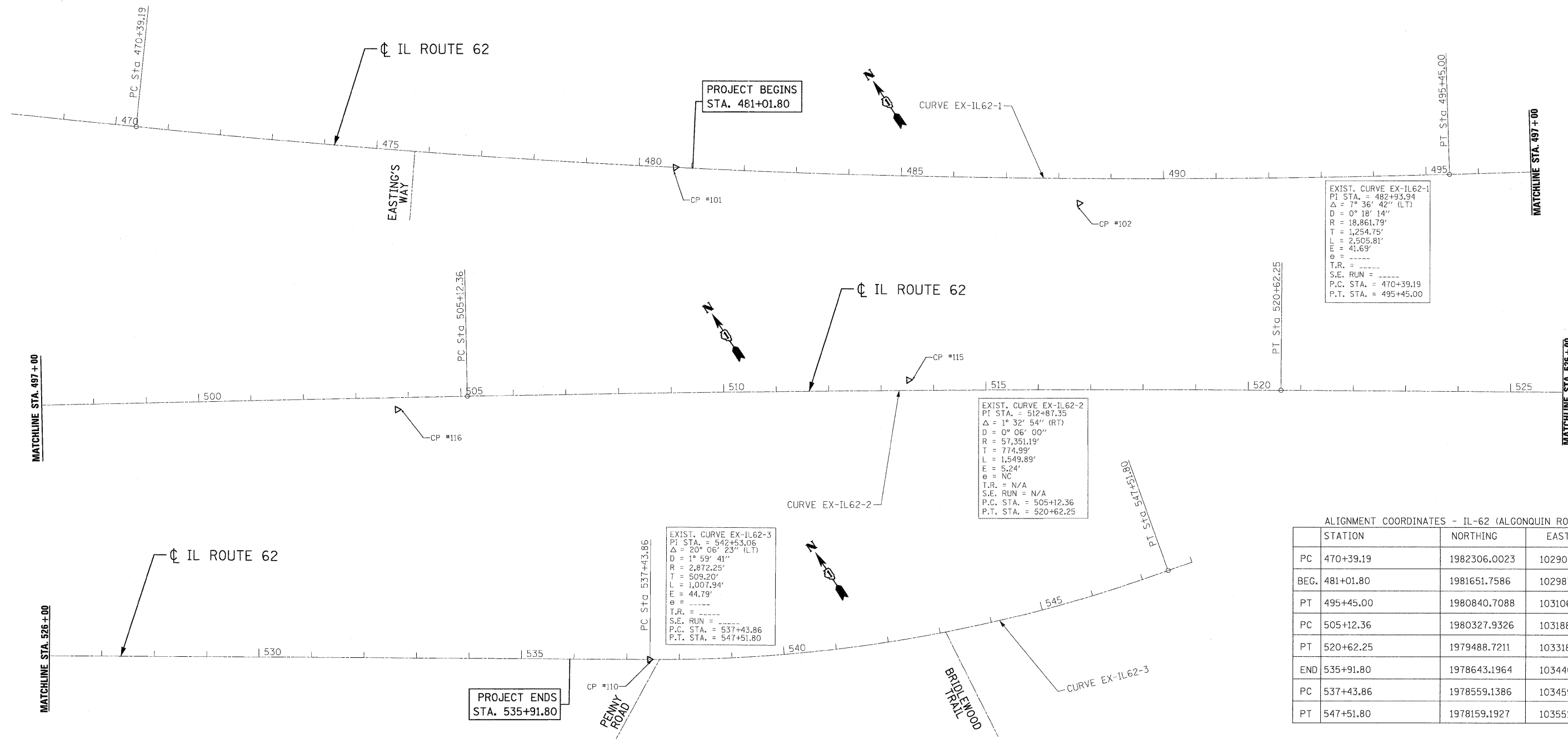


PLAN	SURVEYED	DATE
NO.	BY	
NO.	PLOTTED	
NO.	REVISIONS	
NO.	RT. OR MAY CHECKED	
NO.	CADD FILE NAME	

PLAN	SURVEYED	DATE
NO.	BY	
NO.	PLOTTED	
NO.	REVISIONS	
NO.	RT. OR MAY CHECKED	
NO.	CADD FILE NAME	



EXIST. CURVE EX-IL62-1
 PI STA. = 482+93.94
 $\Delta = 7^\circ 36' 42''$ (LT)
 $D = 0^\circ 18' 14''$
 $R = 18,861.79'$
 $T = 1,254.75'$
 $L = 2,505.81'$
 $E = 41.69'$
 $\theta =$
 $T.R. =$
 $S.E. RUN =$
 $P.C. STA. = 470+39.19$
 $P.T. STA. = 495+45.00$

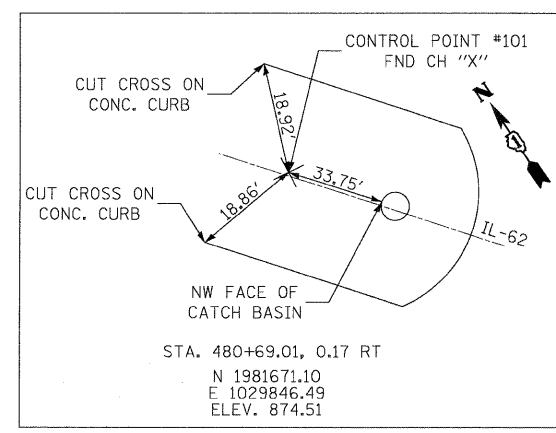
EXIST. CURVE EX-IL62-2
 PI STA. = 512+87.35
 $\Delta = 1^\circ 32' 54''$ (RT)
 $D = 0^\circ 06' 00''$
 $R = 57,351.19'$
 $T = 774.99'$
 $L = 1,549.89'$
 $E = 5.24'$
 $\theta =$
 $T.R. =$
 $S.E. RUN =$
 $P.C. STA. = 505+12.36$
 $P.T. STA. = 520+62.25$

EXIST. CURVE EX-IL62-3
 PI STA. = 542+53.06
 $\Delta = 20^\circ 06' 23''$ (LT)
 $D = 1^\circ 59' 41''$
 $R = 2,872.25'$
 $T = 509.20'$
 $L = 1,007.94'$
 $E = 44.79'$
 $\theta =$
 $T.R. =$
 $S.E. RUN =$
 $P.C. STA. = 537+43.86$
 $P.T. STA. = 547+51.80$

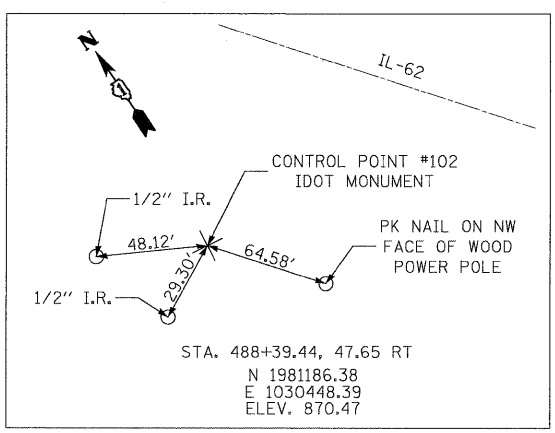
ALIGNMENT COORDINATES - IL-62 (ALGONQUIN ROAD)

STATION	NORTHING	EASTING
PC 470+39.19	1982306.0023	1029035.8304
BEG. 481+01.80	1981651.7586	1029872.9729
PT 495+45.00	1980840.7088	1031066.2876
PC 505+12.36	1980327.9326	1031886.5676
PT 520+62.25	1979488.7211	1033189.5353
END 535+91.80	1978643.1964	1034464.1376
PC 537+43.86	1978559.1386	1034590.8520
PT 547+51.80	1978159.1927	1035510.4150

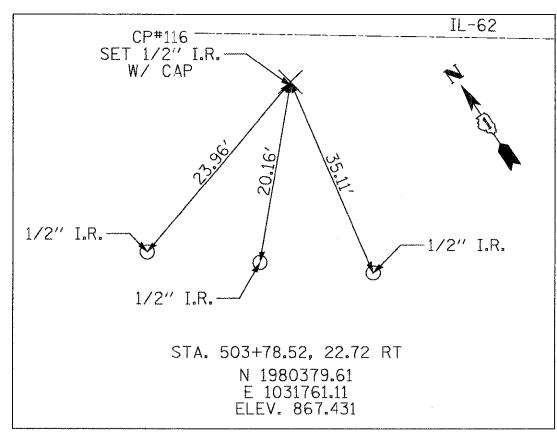
CONTROL POINT #101



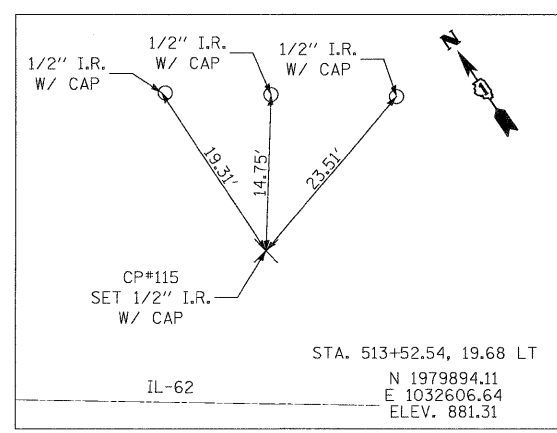
CONTROL POINT #102



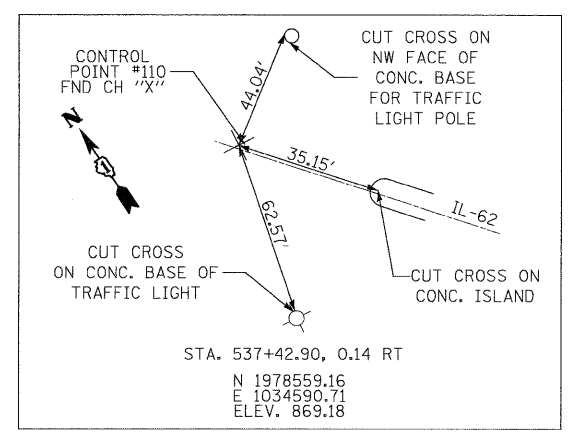
CONTROL POINT #116



CONTROL POINT #115



CONTROL POINT #110



FILE NAME = ...\\D160135-shr-ctb.01.dgn



DESIGNED	ADW	REVISED	-
DRAWN	MHL	REVISED	-
CHECKED	RJD	REVISED	-
DATE	JUNE 30, 2011	REVISED	-

STATE OF ILLINOIS
DEPARTMENT OF TRANSPORTATION

IL RTE 62 (ALGONQUIN RD.) FROM EASTING'S WAY TO PENNY RD.
ALIGNMENT & TIES

SCALE: 1" = 100' SHEET NO. 1 OF 1 SHEETS STA. 481+01.80 TO STA. 535+91.80

F.A.P. RTE.	SECTION	COUNTY	TOTAL SHEETS	SHEET NO.
339	116 Y-1-R-1	COOK	122	11
CONTRACT NO. 60135				
ILLINOIS FED. AID PROJECT				