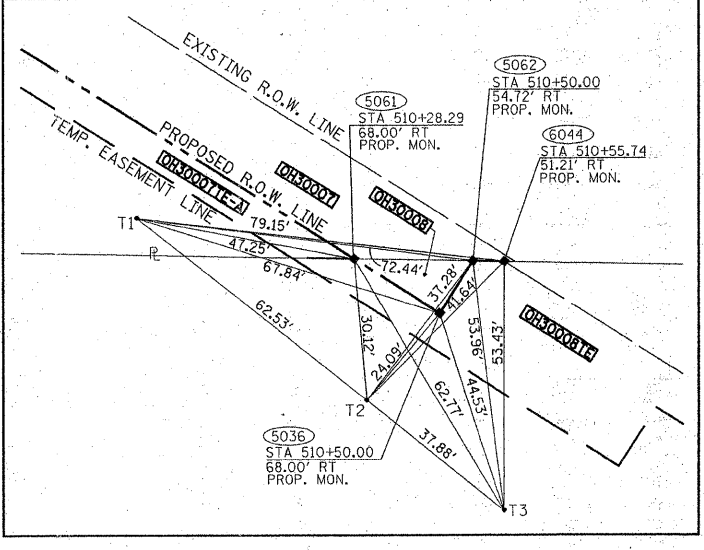
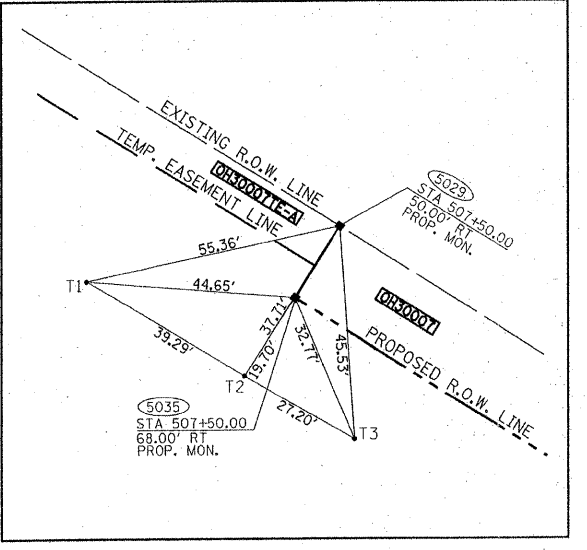
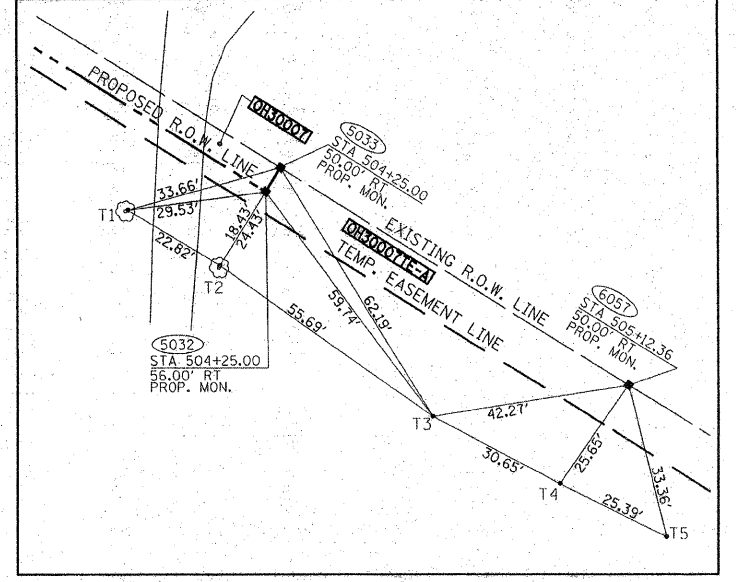
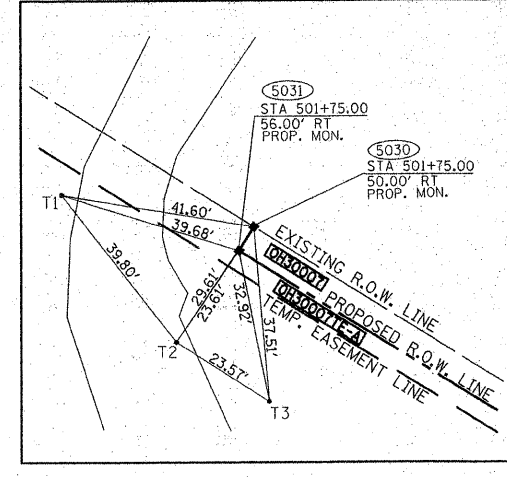
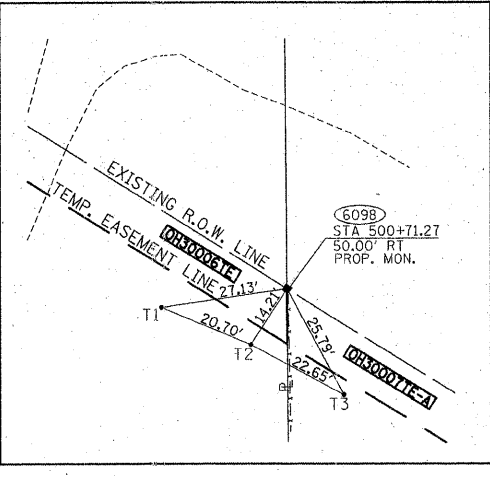
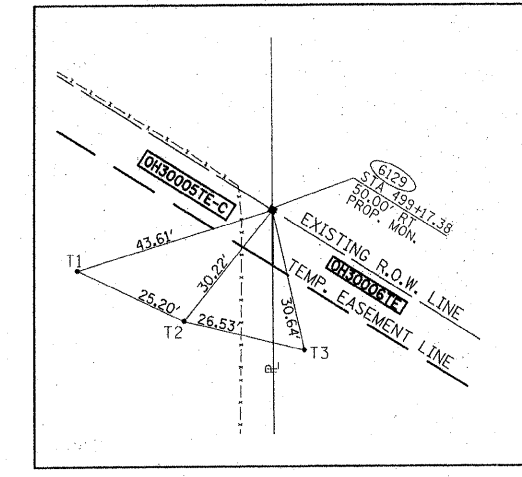
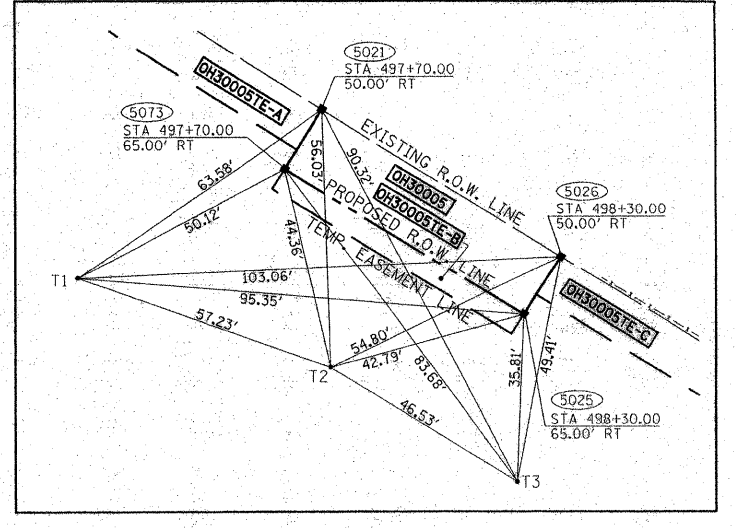
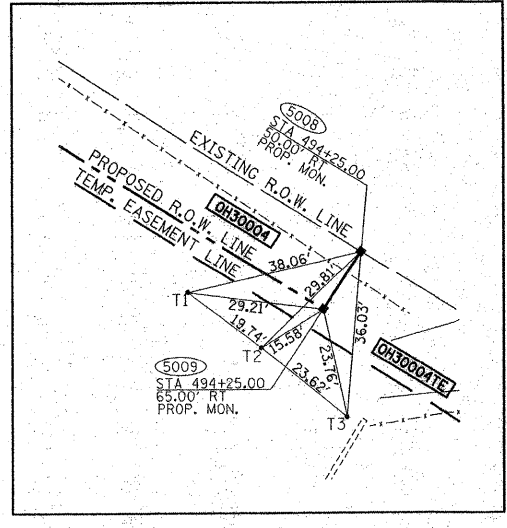
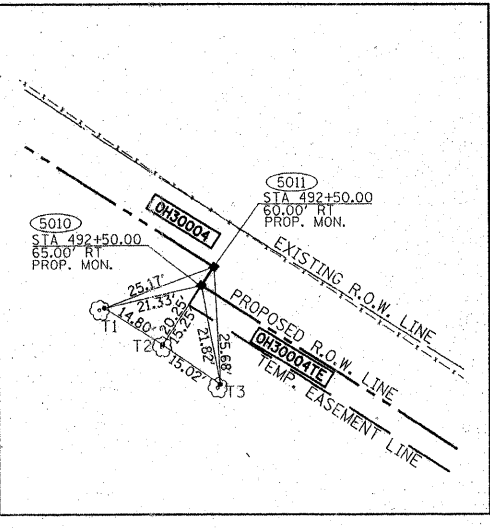
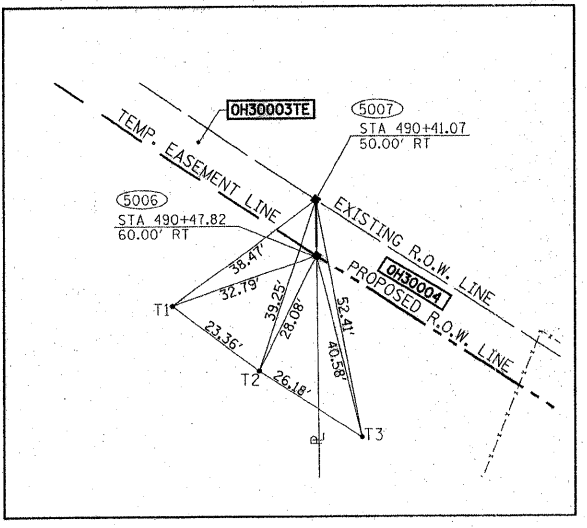


41	1981438.99687	1030084.81966
42	1981424.87120	1030084.03190
100	1978818.83797	1034110.40843
101	1978817.02664	1034110.10638
147	1978960.40678	1033414.61756
156	1978842.97635	1033460.55606
162	1979043.80731	1033769.99398
163	1978911.06973	1033770.41195
175	1979059.96582	1033332.23983
176	1979136.27088	1033202.99479
177	1979159.94334	1033061.52584
190	1979109.12385	1033669.72639
192	1979361.77688	1033283.96170
193	1979231.70215	1033482.79968
194	1979431.12717	1033186.85114
196	1979606.75758	1032911.65129
200	1979918.10948	1032440.72677
223	1979998.46103	1032107.00039
269	1980519.52266	1031485.66072
290	1980003.79036	1031489.68558
291	1980003.59911	1031491.46924
666	1980755.29161	1031108.20304
896	1980243.75322	1031111.39271
5004	1981437.00609	1030083.98524
5006	1981059.75119	1030615.09708
5007	1981071.83046	1030614.97193
5008	1980862.41125	1030937.96610
5009	1980849.74282	1030929.93423
5010	1980944.45752	1030782.06489
5011	1980948.65531	1030784.78124
5012	1980940.25973	1030779.34853
5013	1980792.00046	1031012.16864
5014	1980800.47435	1031017.47837
5015	1980789.83162	1031034.48331
5020	1980743.77604	1031108.15771
5028	1980150.80601	1032055.79491
5029	1980159.26349	1032061.13074
5030	1980464.36298	1031573.99576
5031	1980459.27527	1031570.81532
5033	1980331.84446	1031785.98359
5034	1980277.05537	1031854.76356
5035	1980144.04003	1032051.52624
5036	1979983.49283	1032304.53039
5038	1980077.30621	1032157.04667
5039	1980071.39413	1032153.29870
5040	1979950.70906	1032342.84480
5041	1979963.34619	1032350.92582
5045	1979538.72026	1032222.70290
5046	1979438.72204	1033156.36771
5057	1978975.61955	1033854.48027
5058	1978984.20786	1033860.17745
5061	1979995.15562	1032286.24934
5063	1979995.40289	1032272.84060
5064	1979905.81314	1032440.71208
5065	1979710.07727	1032743.45388
5066	1979591.36783	1032925.04629
5067	1979355.56125	1033281.73001
5068	1979225.68077	1033477.52078
5069	1979104.00428	1033660.94429
5070	1979031.63927	1033770.03230
5071	1981307.74341	1030267.54423
5072	1981295.47493	1030267.67133
5073	1980666.32400	1031222.62400
5074	1980589.08000	1031355.62250
5075	1980507.50670	1031486.11420
6003	1979488.72115	1033189.53530
6024	1979610.21871	1032915.39329
6033	1979718.68031	1032749.34874
6050	1979530.38707	1033217.17496
6056	1980798.31114	1031039.78405
6057	1980285.53488	1031860.06430
6094	1980755.61706	1031108.08110
6098	1980519.34770	1031486.03760
6118	1980814.82216	1031107.69806
6125	1980578.55280	1031485.65450
6128	1980660.12620	1031355.16290
6129	1980600.92110	1031355.54590
6130	1979992.75784	1032416.27898

PLAN	SURVEYED	DATE
NOTE BOOK	ALIGNED CHECKED	BY
NO.	RT. OF WAY CHECKED	DATE
	PAID FILE NAME	

PLAN	SURVEYED	DATE
NOTE BOOK	ALIGNED CHECKED	BY
NO.	RT. OF WAY CHECKED	DATE
	PAID FILE NAME	



RECEIVED
JUL 12 2011
PLATS & LEGALS

REVISION	
DATE	DESCRIPTION
04/21/11	REMOVE PARCEL
07/11/11	ADD TIES

PREPARED BY: **ROGINA & ASSOCIATES, LTD.**
SURVEYORS
93 Caterpillar Drive, Joliet, Illinois 815/729-0777 FAX 815/729-0782

ILLINOIS DEPT. OF TRANSPORTATION
PLAT OF HIGHWAYS

ROUTE FAP 339 IL. ROUTE 62
SECTION PENNY ROAD TO EASTINGS WAY
COUNTY COOK

JOB# R-90-003-04 PROJECT#
SEC T42N, R9E OF 3rd P.M.
STA TO STA
DRAWN J.P.S. CHECKED J.KELLA
SCALE: 1"=20' SHEET NO. 8 OF 8

FILE NAME =
...ND160135-sh-t-parcel_07.dgn



DESIGNED	RJD	REVISED	-
DRAWN	MHL	REVISED	-
CHECKED	RJD	REVISED	-
DATE	JUNE 30, 2011	REVISED	-

STATE OF ILLINOIS
DEPARTMENT OF TRANSPORTATION

IL RTE 62 (ALGONQUIN RD.) FROM EASTING'S WAY TO PENNY RD.	
PLAT OF HIGHWAYS	
SCALE: N.T.S.	SHEET NO. 7 OF 7 SHEETS
STA.	TO STA.

F.A.P. RTE.	SECTION	COUNTY	TOTAL SHEETS	SHEET NO.
339	116 Y-1-R-1	COOK	122	44
CONTRACT NO. 60135				
[ILLINOIS] FED. AID PROJECT				