

Bench Mark: 1/2" Iron rod with cap, Sta. 513+52.54, 19.68' Lt., Elev. 881.31.

Existing Structure: None.

INDEX OF SHEETS

1. General Plan & Elevation
2. Wall Details-1
3. Wall Details-2
4. Wall Details-3
5. Wall Details-4
6. Soil Borings-1
7. Soil Borings-2

DESIGN STRESSES

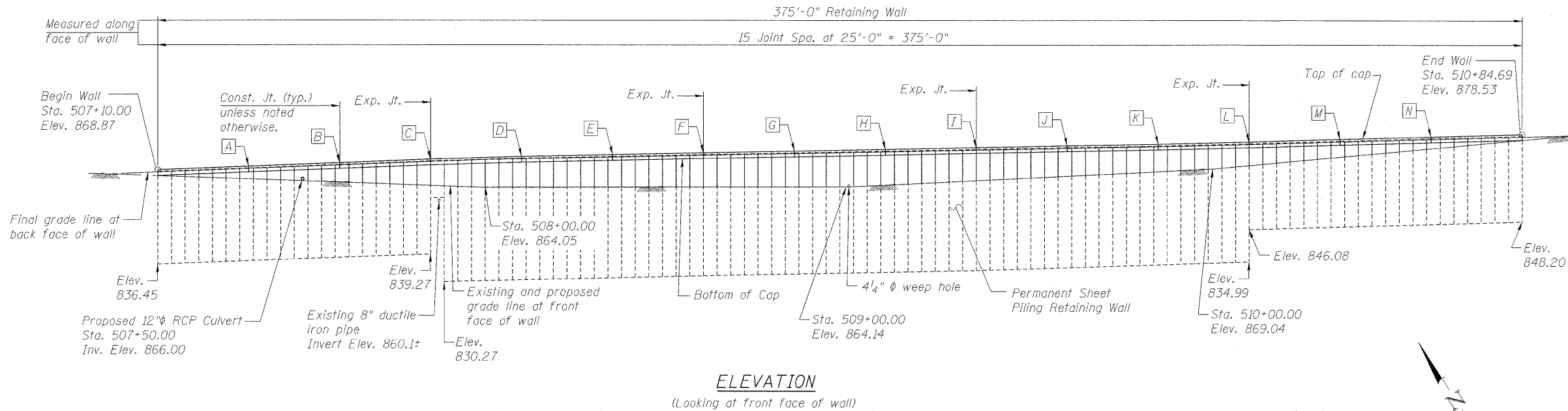
FIELD UNITS
 $f'_c = 3,500$ psi
 $f_y = 60,000$ psi (Reinforcement)
 $f_y = 38,500$ psi (Sheet Piling)
 (Gr. 39, AASHTO M 202)

DESIGN SPECIFICATIONS

2002 AASHTO Standard Specifications, 17th Edition

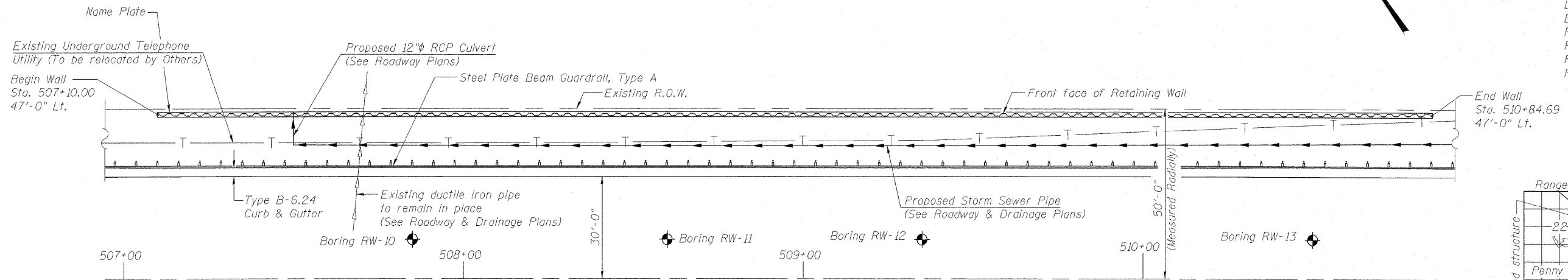
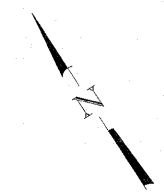
CURVE DATA

(Illinois Route 62)
 $\Delta = 1^\circ 32' 54''$ (RT)
 $D = 0^\circ 06' 00''$
 $T = 774.99'$
 $L = 1,549.89'$
 $E = 5.24'$
 $R = 57,351.19'$
 P.C. = Sta. 505+12.36
 P.T. = Sta. 520+62.25
 P.I. = Sta. 512+87.35

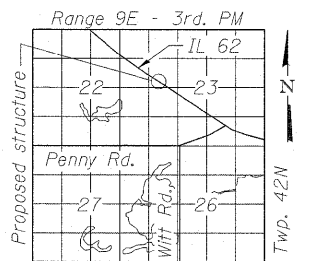


ELEVATION

(Looking at front face of wall)



PLAN

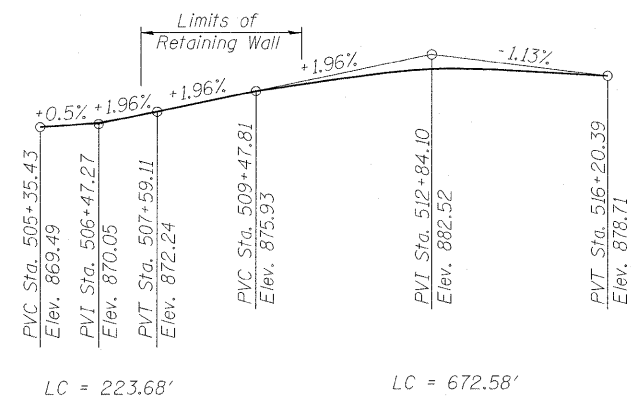


LOCATION SKETCH

Note:
 Offsets measured radially to IL 62 from front face of sheet piling.

TOP OF CAP DATA

LOCATION	STATION	ELEVATION
A	507+34.98	869.78
B	507+59.96	870.72
C	507+84.94	871.69
D	508+09.92	872.46
E	508+34.90	872.95
F	508+59.88	873.44
G	508+84.85	873.93
H	509+09.83	874.42
I	509+34.81	874.91
J	509+59.79	875.39
K	509+84.77	875.85
L	510+09.75	876.41
M	510+34.73	877.15
N	510+59.71	877.85



PROFILE GRADE

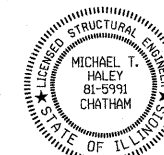
(along IL 62)

GENERAL NOTES

Reinforcement bars shall conform to the requirements of ASTM A706 Gr 60. See Special Provisions.
 Reinforcement bars designated (E) shall be epoxy coated.
 Concrete Cap shall be constructed after backfill is in place.
 It shall be the Contractor's responsibility to verify the location of the existing underground utilities prior to starting construction.
 The Contractor shall take precaution during pile driving operations so as not to damage any proposed and/or existing utilities.

TOTAL BILL OF MATERIAL

ITEM	UNIT	QUANTITY
Concrete Structures	Cu. Yd.	48.6
Stud Shear Connectors	Each	410
Reinforcement Bars, Epoxy Coated	Pound	4810
Permanent Steel Sheet Piling	Sq. Ft.	13840
Pipe Underdrains for Structures 4"	Foot	376
Geocomposite Wall Drain	Sq. Yd.	111
Porous Granular Embankment, Special	Cu. Yd.	148.0
Name Plates	Each	1



Michael T. Haley 10-21-2011
 Michael T. Haley Date

Licensed Structural Engineer
 State of Illinois No. 81-5991
 Expires 11/30/2012

LT. STA. 507+10.00 TO STA. 510+84.69
 BUILT 2011 BY
 STATE OF ILLINOIS
 F.A.P. RT. 339 SEC. 116 Y-1-R-1
 STRUCTURE NO. 016-W996

NAME PLATE

See Std. 515001

RETAINING WALL NO. 3
 STA. 507+10.00 TO STA. 510+84.69



USER NAME =	DESIGNED - ESH	REVISED - MTH 10/21/11
PLOT SCALE =	CHECKED - ADB	REVISED -
PLOT DATE =	DRAWN - ESH	REVISED -
	CHECKED - ADB	REVISED -

STATE OF ILLINOIS
 DEPARTMENT OF TRANSPORTATION

GENERAL PLAN & ELEVATION
 STRUCTURE NO. 016-W996

SHEET NO. S1 OF S7 SHEETS

F.A.P. RTE.	SECTION	COUNTY	TOTAL SHEETS	SHEET NO.
339	116 Y-1-R-1	COOK	122	69
			CONTRACT NO.	60135
ILLINOIS FED. AID PROJECT				