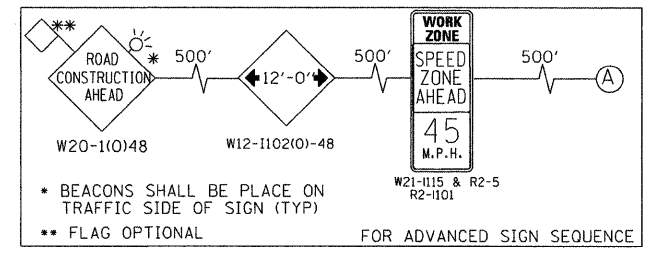
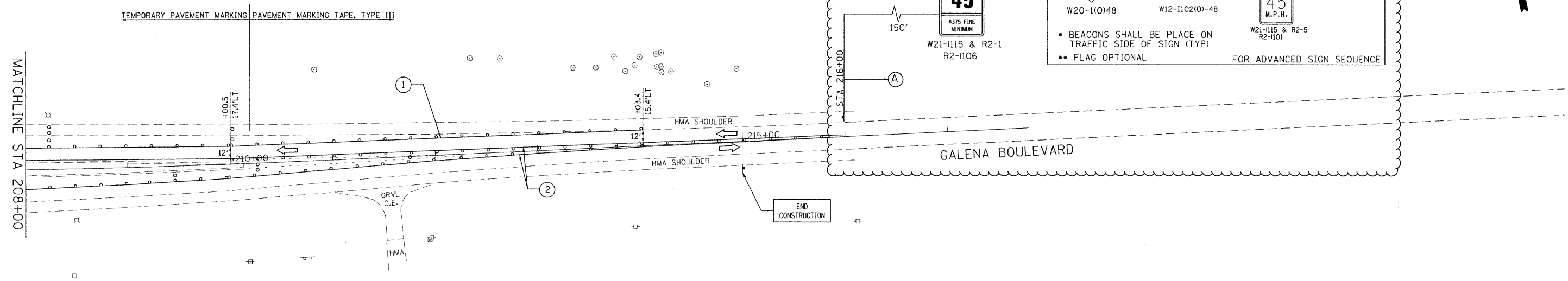


TEMPORARY PAVEMENT MARKING PAVEMENT MARKING TAPE, TYPE III

MATCHLINE STA 208+00



\* BEACONS SHALL BE PLACED ON TRAFFIC SIDE OF SIGN (TYP)  
 \*\* FLAG OPTIONAL FOR ADVANCED SIGN SEQUENCE

END CONSTRUCTION

**LEGEND**

- TYPE II BARRICADES OR DRUMS WITH STEADY BURNING LIGHTS @ 50 FT CENTERS ALONG ROADWAY (TANGENT) AND 25 FT CENTERS ALONG TAPERS.
- TT TYPE III BARRICADES WITH STEADY BURNING LIGHTS
- ▨ WORK ZONE
- ▩ IMPACT ATTENUATOR
- ▬ TEMPORARY CONCRETE BARRIER
- ① TEMPORARY MARKING 4", SOLID WHITE LINE (TYP)
- ② TEMPORARY MARKING 4", SOLID YELLOW LINE (TYP)
- ③ TEMPORARY MARKING 4" SKIP-DASH WHITE LINE, 6' SKIP, 2' DASH

FILE NAME = P:\2010\ME\10012.PTB156-16.Galena\CAAD\Shots\1606076-Shr-51g-22.dgn  
 USER NAME = Millennium Professional Services



200 22ND Street, Suite 216, Lombard, IL 60148  
 630.785.8110 voice, 630.839.2566 fax  
 www.mps-il.com  
**MILLENNIA PROFESSIONAL SERVICES**

DESIGNED	CJD	REVISED	▲ 11/02/11
DRAWN	CJD	REVISED	-
CHECKED	TVN	REVISED	-
DATE	9/30/2011	REVISED	-

**STATE OF ILLINOIS  
 DEPARTMENT OF TRANSPORTATION**

**GALENA BOULEVARD**

**SUGGESTED STAGES OF CONSTRUCTION  
 & TRAFFIC CONTROL  
 STAGE II**

SCALE: 1"=50' SHEET NO. 2 OF 2 SHEETS STA. 208+00 TO STA. 216+00

F.A.P. RTE.	SECTION	COUNTY	TOTAL SHEETS	SHEET NO.
573	61HB-1-R	KANE	110	25
CONTRACT NO. 60K76			FED. ROAD DIST. NO. 1 ILLINOIS FED. AID PROJECT	

P:\2010\ME\10012.PTB156-16.Galena\CAAD\Shots\1606076-Shr-51g-22.dgn