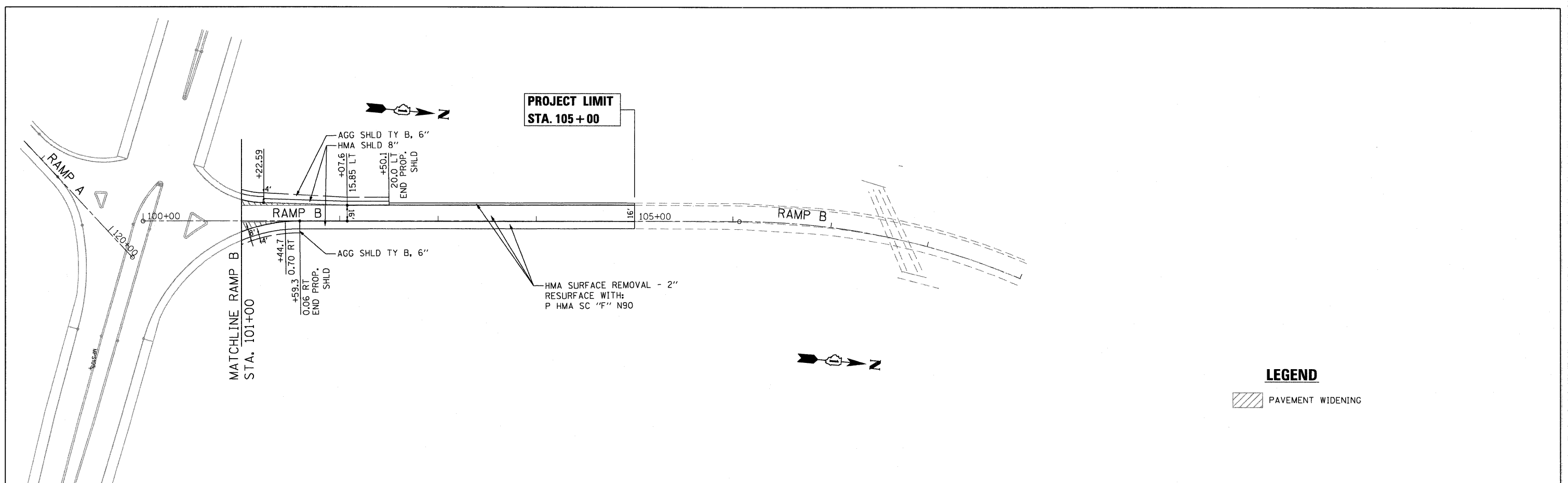


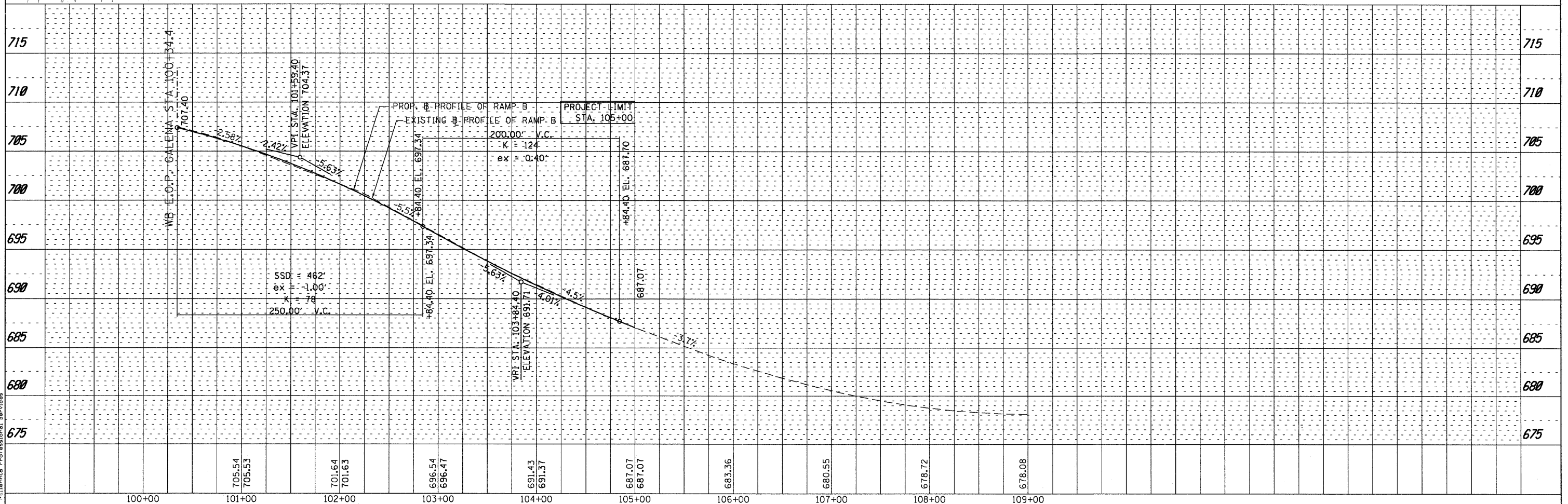
PLAN	SURVEYED	BY	DATE
	ALIGNED		
	ADJUSTED		
	NOTED		
	CHECKED		
	RT. OF WAY CHECKED		
	CADD FILE NAME		

PROFILE	SURVEYED	BY	DATE
	ALIGNED		
	ADJUSTED		
	NOTED		
	CHECKED		
	STRUCTURE NOTATIONS CHKD		
	CADD FILE NAME		

P:\2010\ME10012.PTB156-16.Galena\CADD\SHS\11606K76-Sht-p1nprf02.dgn
 FILE NAME =
 PLOT FILE NAME =
 USER NAME = Millennium Professional Services



LEGEND
 PAVEMENT WIDENING



100+00	101+00	102+00	103+00	104+00	105+00	106+00	107+00	108+00	109+00
	705.54 705.53	701.64 701.63	696.54 696.47	691.43 691.37	687.07 687.07	683.36	680.55	678.72	678.08

DESIGNED - CJD	REVISED -	STATE OF ILLINOIS DEPARTMENT OF TRANSPORTATION	GALENA BOULEVARD	PLAN & PROFILE RAMP B	F.A.P. RTE. 573	SECTION 61HB-1-R	COUNTY KANE	TOTAL SHEETS 110	SHEET NO. 17
DRAWN - CJD	REVISED -				CONTRACT NO. 60K76				
CHECKED - TVN	REVISED -				SCALE: 1"=50' SHEET NO. 2 OF 4 SHEETS STA. 101+00 TO STA. 106+00				
DATE 8/29/2011	REVISED -				FED. ROAD DIST. NO. 1 ILLINOIS FED. AID PROJECT				

200 22ND Street, Suite 216, Lombard, IL 60148
 630.705.8118 voice, 630.839.2566 fax
 WWW.MPS-IL.COM
MILLENNIA PROFESSIONAL SERVICES

P:\2010\ME10012.PTB156-16.Galena\CADD\SHS\11606K76-Sht-p1nprf02.dgn
 FED. ROAD DIST. NO. 1 ILLINOIS FED. AID PROJECT