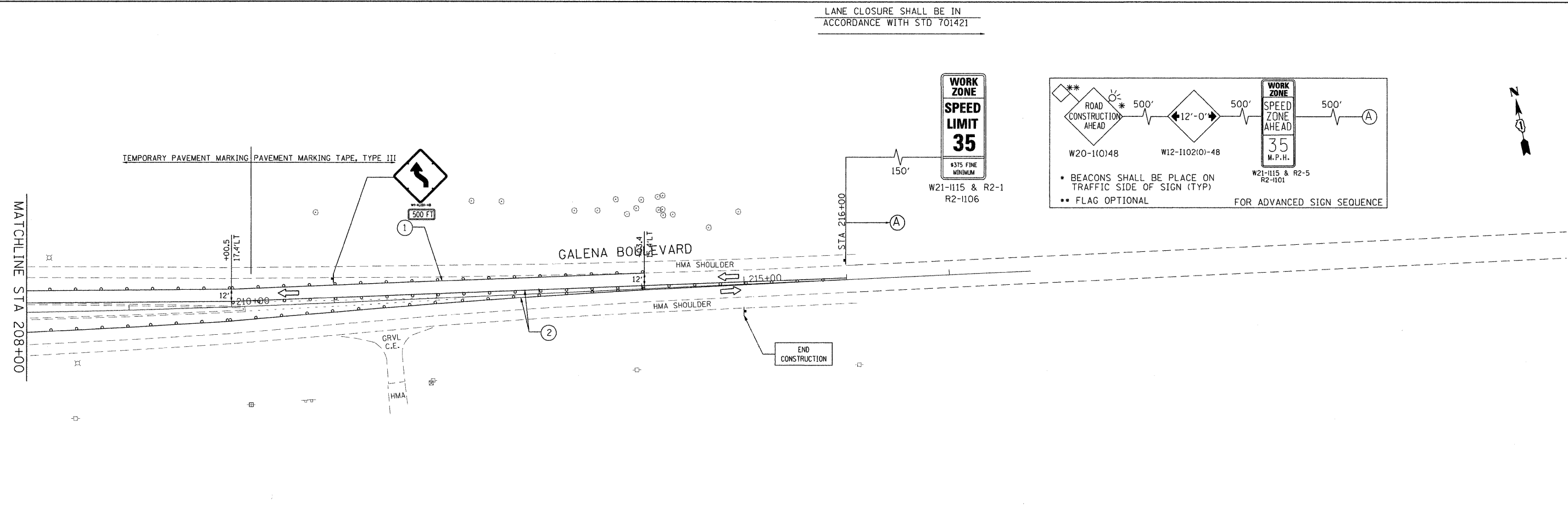


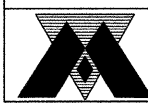
LANE CLOSURE SHALL BE IN ACCORDANCE WITH STD 701421



**LEGEND**

- TYPE II BARRICADES OR DRUMS WITH STEADY BURNING LIGHTS @ 50 FT CENTERS ALONG ROADWAY (TANGENT) AND 25 FT CENTERS ALONG TAPERS.
  - ⊥ TYPE III BARRICADES WITH STEADY BURNING LIGHTS
  - ▨ WORK ZONE
  - ▩ IMPACT ATTENUATOR
  - ▬ TEMPORARY CONCRETE BARRIER
- 
- ① TEMPORARY MARKING 4", SOLID WHITE LINE (TYP)
  - ② TEMPORARY MARKING 4", SOLID YELLOW LINE (TYP)
  - ④ TEMPORARY PAVEMENT 4", SKIP-DASH WHITE LINE, 25' SKIP, 25' DASH (TYP)
  - ③ TEMPORARY MARKING 4" SKIP-DASH WHITE LINE, 6' SKIP, 2' DASH

FILE NAME = P:\2010\ME10012\_P18156-16\_Galena\CADD\Shets\0160K76-Sht-5tg-22.dgn  
 PLOT SCALE = 50.0000' = 1" IN.  
 USER NAME = Millennium Professional Services



200 22ND Street, Suite 216, Lombard, IL 60148  
 630.785.8118 voice, 630.839.2566 fax  
 www.mps-ill.com

**MILLENNIA PROFESSIONAL SERVICES**

DESIGNED - CJD	REVISED -
DRAWN - CJD	REVISED -
CHECKED - TVN	REVISED -
DATE - 8/29/2011	REVISED -

**STATE OF ILLINOIS  
DEPARTMENT OF TRANSPORTATION**

**GALENA BOULEVARD**

**SUGGESTED STAGES OF CONSTRUCTION  
& TRAFFIC CONTROL  
STAGE II**

SCALE: 1"=50'    SHEET NO. 2 OF 2 SHEETS    STA. 208+00 TO STA. 216+00

F.A.P. RTE. 573	SECTION 61HB-1-R	COUNTY KANE	TOTAL SHEETS 110	SHEET NO. 25
CONTRACT NO. 60K76				

FED. ROAD DIST. NO. 1 [ILLINOIS] FED. AID PROJECT

P:\2010\ME10012\_P18156-16\_Galena\CADD\Shets\0160K76-Sht-5tg-22.dgn