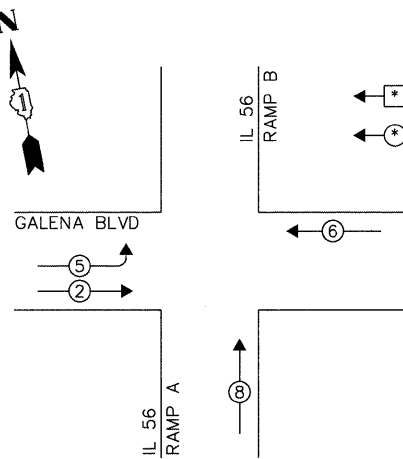


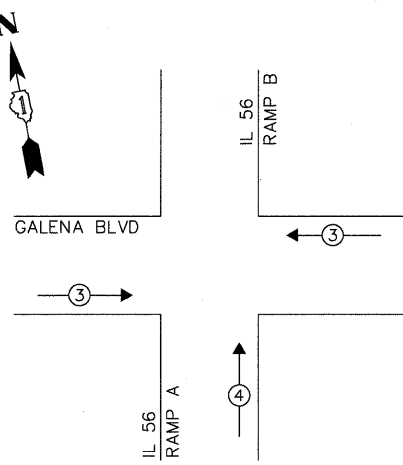
CONTROLLER SEQUENCE



LEGEND:  
 \* SINGLE ENTRY PHASE  
 \* DUAL ENTRY PHASE

PHASE DESIGNATION DIAGRAM

EMERGENCY VEHICLE PREEMPTION SEQUENCE



PROPOSED EMERGENCY VEHICLE PREEMPTORS		
EMERGENCY VEHICLE PREEMPTOR	3	4
MOVEMENT	←	↑

I.D.O.T. TRAFFIC SIGNAL INSTALLATION ELECTRICAL SERVICE REQUIREMENTS					TOTAL WATTAGE
TYPE	NO. OF LAMPS	WATTAGE INCAND.	LED	% OPERATION	
SIGNAL (RED)	16		17	0.50	136.00
(YELLOW)	16		25	0.25	100.00
(GREEN)	16		15	0.25	60.00
ARROW	4		12	0.10	4.80
PED. SIGNAL	-		25	1.00	-
CONTROLLER	1		100	1.00	100.00
ILLUM. SIGN	-		25	0.05	-
VIDEO SYSTEM	-		-	1.00	-
FLASHER				0.50	
ENERGY COSTS TO:					TOTAL = 400.80

ILLINOIS DEPARTMENT OF TRANSPORTATION  
 DIVISION OF HIGHWAYS / DISTRICT 1  
 201 WEST CENTER COURT / SCHAUMBURG, ILLINOIS 60196-1096  
 ENERGY SUPPLY: CONTACT: TOM PERKINS  
 PHONE: (847) 894-7968  
 COMPANY: COMMONWEALTH EDISON

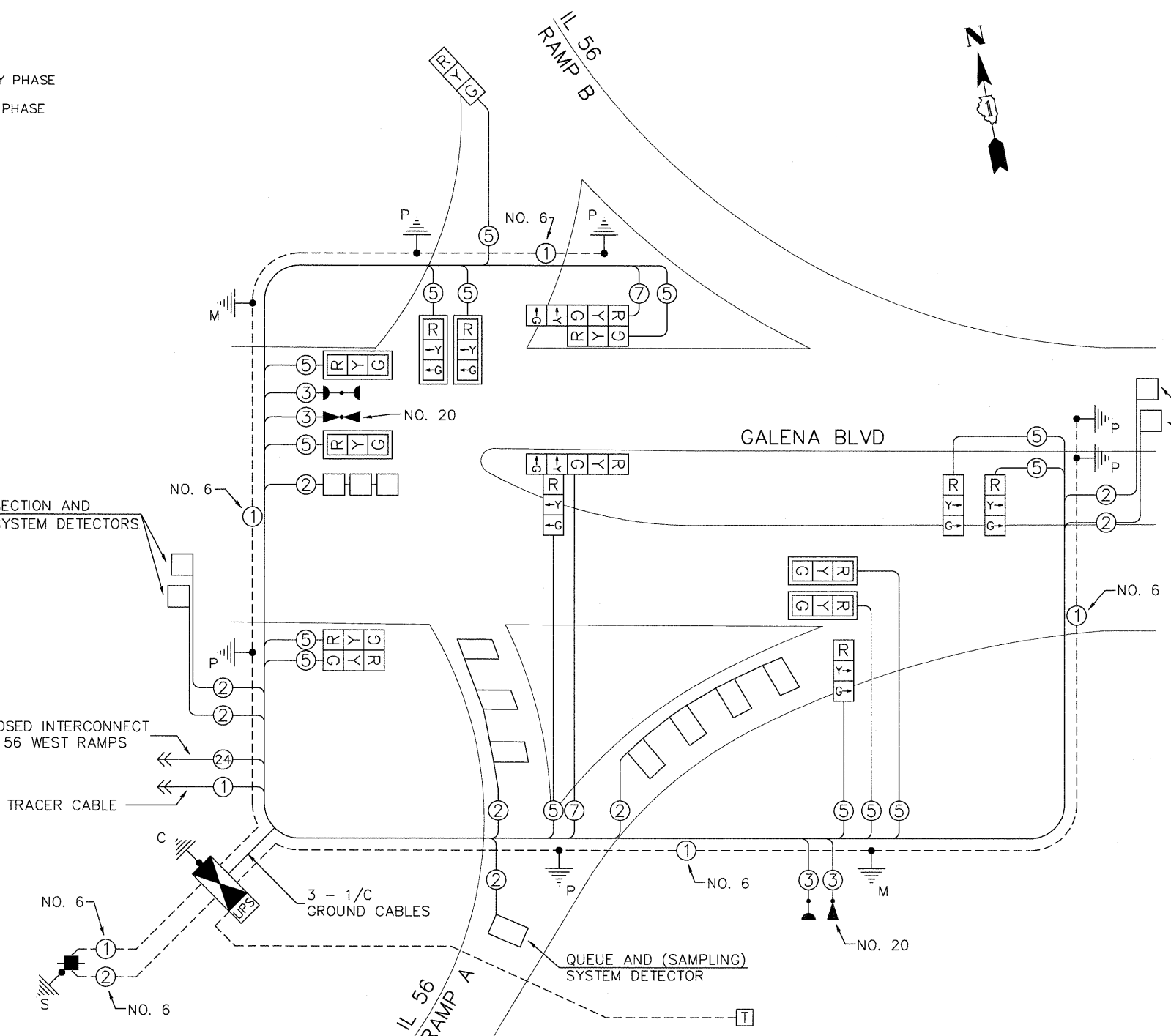
PROP. INTERSECTION AND (SAMPLING) SYSTEM DETECTORS

PROPOSED INTERCONNECT TO IL 56 WEST RAMPS

TRACER CABLE

3 - 1/C GROUND CABLES

CABLE PLAN



RESTORATION OF WORK AREA. RESTORATION OF THE TRAFFIC SIGNAL WORK AREA SHALL BE INCIDENTAL TO THE RELATED PAY ITEM SUCH AS FOUNDATION, CONDUIT, HANDHOLE, TRENCH AND BACKFILL, ETC., AND NO EXTRA COMPENSATION SHALL BE ALLOWED. ALL ROADWAY SURFACES SUCH AS SHOULDERS, MEDIANS, SIDEWALKS, PAVEMENT, ETC. SHALL BE REPLACED IN KIND. ALL DAMAGE TO MOWED LAWNS SHALL BE REPLACED WITH AN APPROVED SOD, AND ALL DAMAGE TO UNMOWED FIELDS SHALL BE SEEDED IN ACCORDANCE WITH STANDARD SPECIFICATIONS 252 AND 250 RESPECTIVELY.

THE END OF THE TRACER CABLE SHALL BE CONTINUOUS AND EXTEND INTO THE CONTROLLER CABINET.

PROP. INTERSECTION AND (SAMPLING) SYSTEM DETECTORS

SCHEDULE OF QUANTITIES

ITEM	UNIT	QUANTITY
CHANGEABLE MESSAGE SIGN	CAL MO	1
SERVICE INSTALLATION, POLE MOUNTED	EACH	1
CONDUIT IN TRENCH, 2" DIA., GALVANIZED STEEL	FOOT	950
CONDUIT IN TRENCH, 2 1/2" DIA., GALVANIZED STEEL	FOOT	110
CONDUIT IN TRENCH, 3" DIA., GALVANIZED STEEL	FOOT	65
CONDUIT IN TRENCH, 4" DIA., GALVANIZED STEEL	FOOT	80
CONDUIT PUSHED, 2" DIA., GALVANIZED STEEL	FOOT	220
CONDUIT PUSHED, 2 1/2" DIA., GALVANIZED STEEL	FOOT	60
CONDUIT PUSHED, 3" DIA., GALVANIZED STEEL	FOOT	100
CONDUIT PUSHED, 4" DIA., GALVANIZED STEEL	FOOT	330
HANDHOLE	EACH	4
HEAVY-DUTY HANDHOLE	EACH	6
DOUBLE HANDHOLE	EACH	1
TRENCH AND BACKFILL FOR ELECTRICAL WORK	FOOT	1120
FULL-ACTUATED CONTROLLER AND TYPE V CABINET	EACH	1
UNINTERRUPTIBLE POWER SUPPLY	EACH	1
TRANSCEIVER - FIBER OPTIC	EACH	1
ELECTRIC CABLE IN CONDUIT, SIGNAL NO. 14 3C	FOOT	460
ELECTRIC CABLE IN CONDUIT, SIGNAL NO. 14 5C	FOOT	3080
ELECTRIC CABLE IN CONDUIT, SIGNAL NO. 14 7C	FOOT	410
ELECTRIC CABLE IN CONDUIT, LEAD-IN, NO. 14 1 PAIR	FOOT	2170
ELECTRIC CABLE IN CONDUIT, SERVICE, NO. 6 2C	FOOT	190
ELECTRIC CABLE IN CONDUIT, EQUIPMENT GROUNDING CONDUCTOR, NO. 6 1C	FOOT	1080
TRAFFIC SIGNAL POST, GALVANIZED STEEL, 14 FT	EACH	4
TRAFFIC SIGNAL POST, GALVANIZED STEEL, 16 FT	EACH	2
STEEL COMBINATION MAST ARM ASSEMBLY AND POLE 50 FT	EACH	1
STEEL COMBINATION MAST ARM ASSEMBLY AND POLE WITH DUAL MAST ARMS, 48 FT. AND 30 FT	EACH	1
CONCRETE FOUNDATION, TYPE A	FOOT	24
CONCRETE FOUNDATION, TYPE C	FOOT	4
CONCRETE FOUNDATION, TYPE E 36-INCH DIAMETER	FOOT	29
SIGNAL HEAD, LED, 1-FACE, 3-SECTION, MAST ARM MOUNTED	EACH	6
SIGNAL HEAD, LED, 1-FACE, 3-SECTION, BRACKET MOUNTED	EACH	4
SIGNAL HEAD, LED, 2-FACE, 3-SECTION, BRACKET MOUNTED	EACH	1
SIGNAL HEAD, LED, 2-FACE, 1-3 SECTION, 1-5 SECTION, BRACKET MOUNTED	EACH	2
TRAFFIC SIGNAL BACKPLATE, LOUVERED, ALUMINUM	EACH	6
INDUCTIVE LOOP DETECTOR	EACH	8
DETECTOR LOOP, TYPE I	FOOT	510
LIGHT DETECTOR	EACH	2
LIGHT DETECTOR AMPLIFIER	EACH	1
ELECTRIC CABLE IN CONDUIT NO. 20 3/C, TWISTED, SHIELDED	FOOT	460

\* 100% COST TO VILLAGE OF SUGAR GROVE