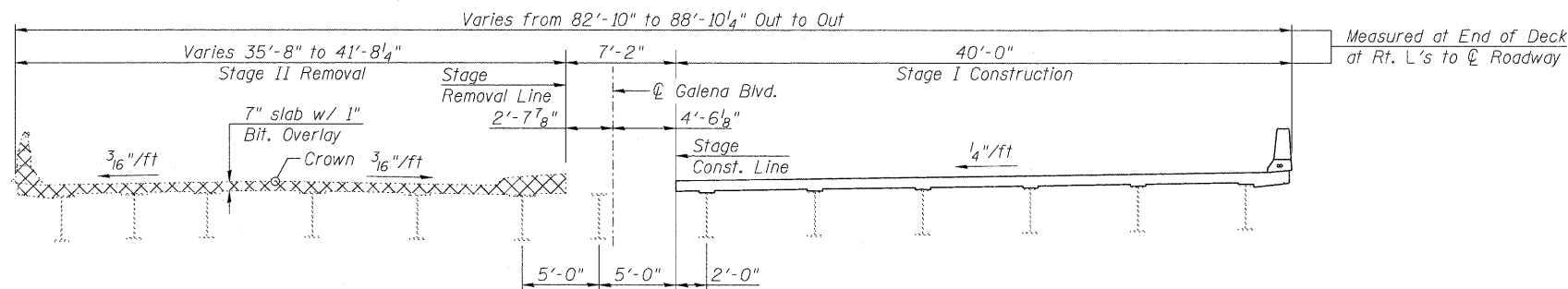
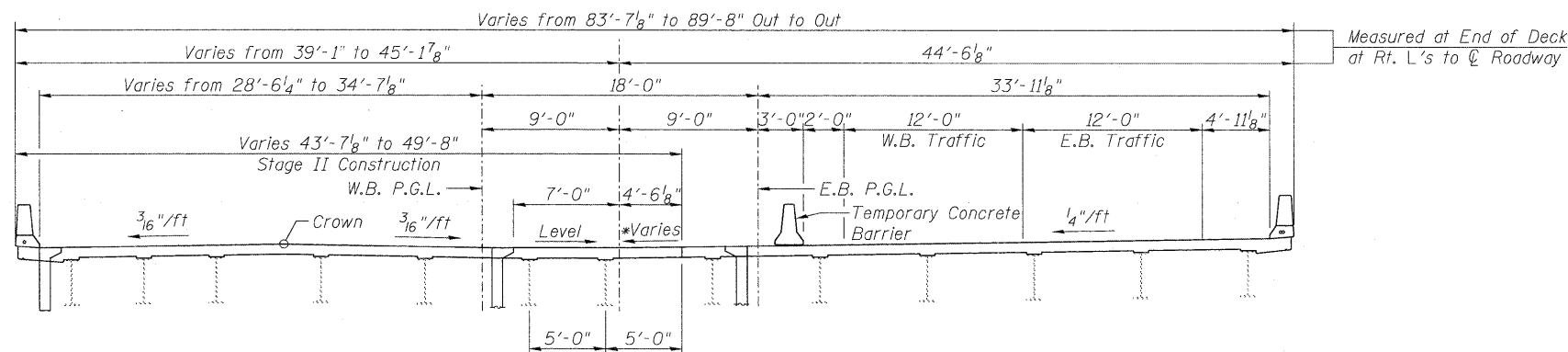


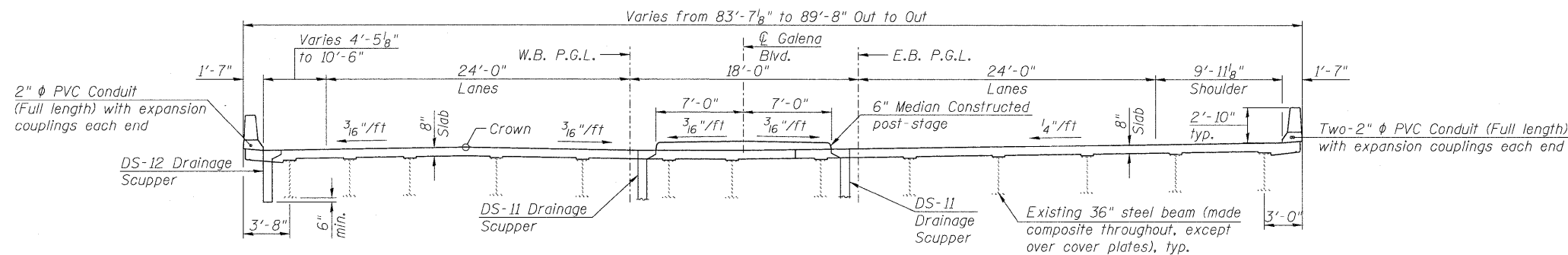
STAGE I REMOVAL & STAGE I TRAFFIC
(Looking East)



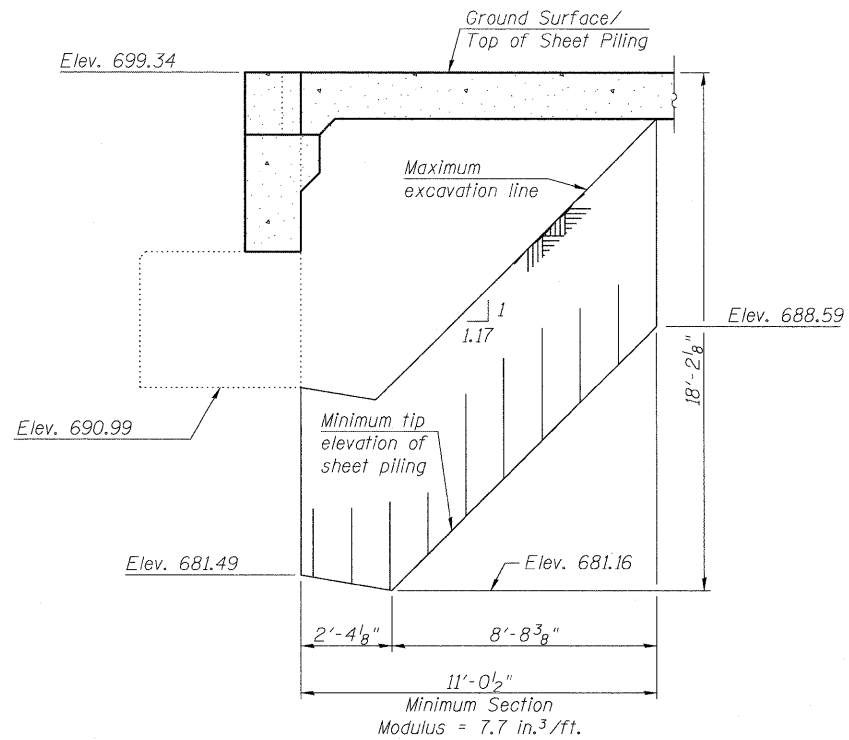
STAGE I CONST. & STAGE II REMOVAL
(Looking East)



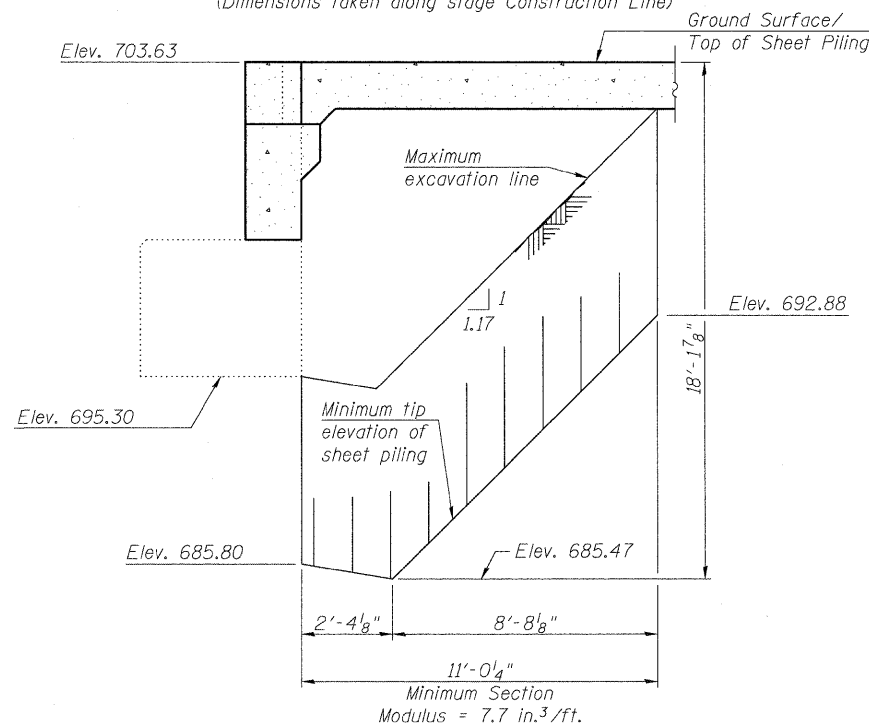
STAGE II CONST. & STAGE II TRAFFIC
(Looking East)



PROPOSED CROSS SECTION
(Looking East)



TEMPORARY SHEET PILING - WEST ABUT.
(Dimensions taken along stage Construction Line)



TEMPORARY SHEET PILING - EAST ABUT.
(Dimensions taken along stage Construction Line)

Notes:
See Sheet 5 of 39 for Details of Temporary Concrete Barrier.
See Roadway Plans for quantity of Temporary Concrete Barrier.
Cost of removal of existing steel conduit, wearing surface, and aluminum railing are included with Removal of Existing Concrete Deck.
The existing steel conduit shall be temporarily supported in place during construction.
If the Contractor chooses to alter the temporary cantilevered sheet piling design requirements shown on the plans, a design submittal including plan details and calculations will be required for review and acceptance by the Engineer.
* Hand finishing of concrete required between Center Galena Blvd. and stage construction line. This portion has a warped cross slope due to the non-parallel profile grades.



USER NAME =	DESIGNED - MTH	REVISED -
FILE NAME =	CHECKED - ADB	REVISED -
PLOT SCALE =	DRAWN - AJF	REVISED -
PLOT DATE =	CHECKED - MTH	REVISED -

**STATE OF ILLINOIS
DEPARTMENT OF TRANSPORTATION**

**STAGE CONSTRUCTION DETAILS
STRUCTURE NO. 045-0037**

SHEET NO. 4 OF 39 SHEETS

F.A.P. RTE. 573	SECTION 61HB-1-R	COUNTY KANE	TOTAL SHEETS 110	SHEET NO. 54
				CONTRACT NO. 60K76

ILLINOIS FED. AID PROJECT