

Notes:
See sheet 16 of 39 for median details, reinforcement and Bill of Material.
Bars indicated thus 3x10-#5 etc. indicates 3 lines of bars with 10 lengths per line.
See Sheet 15 of 39 for Section A-A and parapet details.
See Sheet 39 of 39 for Bar Splicer Details.
See Sheet 1 of 39 for location of Drainage Scuppers.

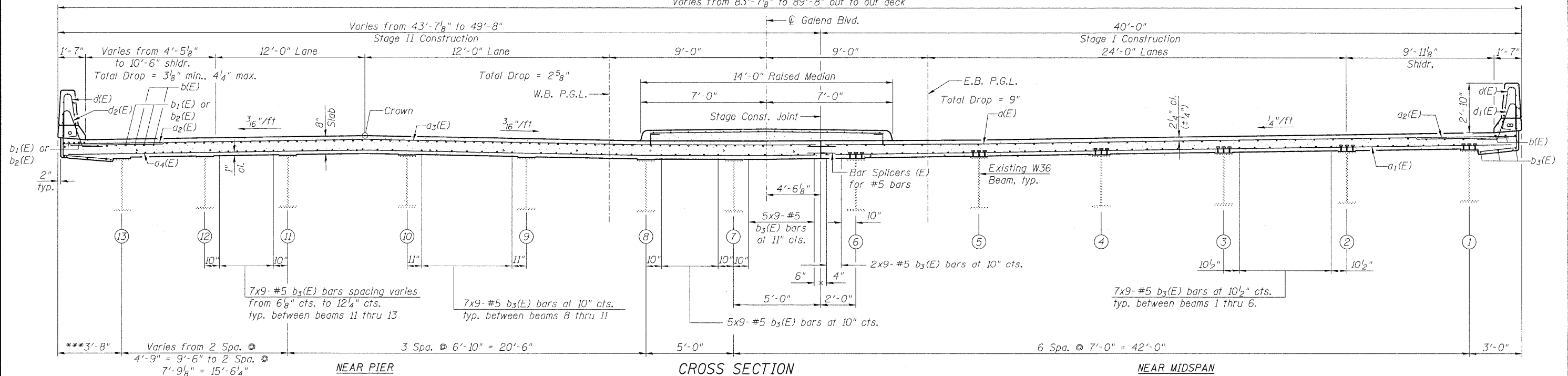
MIN. BAR LAP

#5 Bar = 2'-7"
#6 Bar = 3'-1"

PLAN

(Median not shown for clarity)

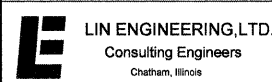
Varies from 83'-7 7/8" to 89'-8" out to out deck



CROSS SECTION

(Looking East)
(Scuppers not shown for clarity)

***Measured at right angles to Beam 13.



USER NAME =
FILE NAME =
PLOT SCALE =
PLOT DATE =

DESIGNED - MTH
CHECKED - ADB
DRAWN - AJF
CHECKED - MTH

REVISED -
REVISED -
REVISED -
REVISED -

**STATE OF ILLINOIS
DEPARTMENT OF TRANSPORTATION**

**SUPERSTRUCTURE
STRUCTURE NO. 045-0037**

SHEET NO. 14 OF 39 SHEETS

F.A.P. RTE.	SECTION	COUNTY	TOTAL SHEETS	SHEET NO.
573	61HB-1-R	KANE	110	64
				CONTRACT NO. 60K76
ILLINOIS FED. AID PROJECT				