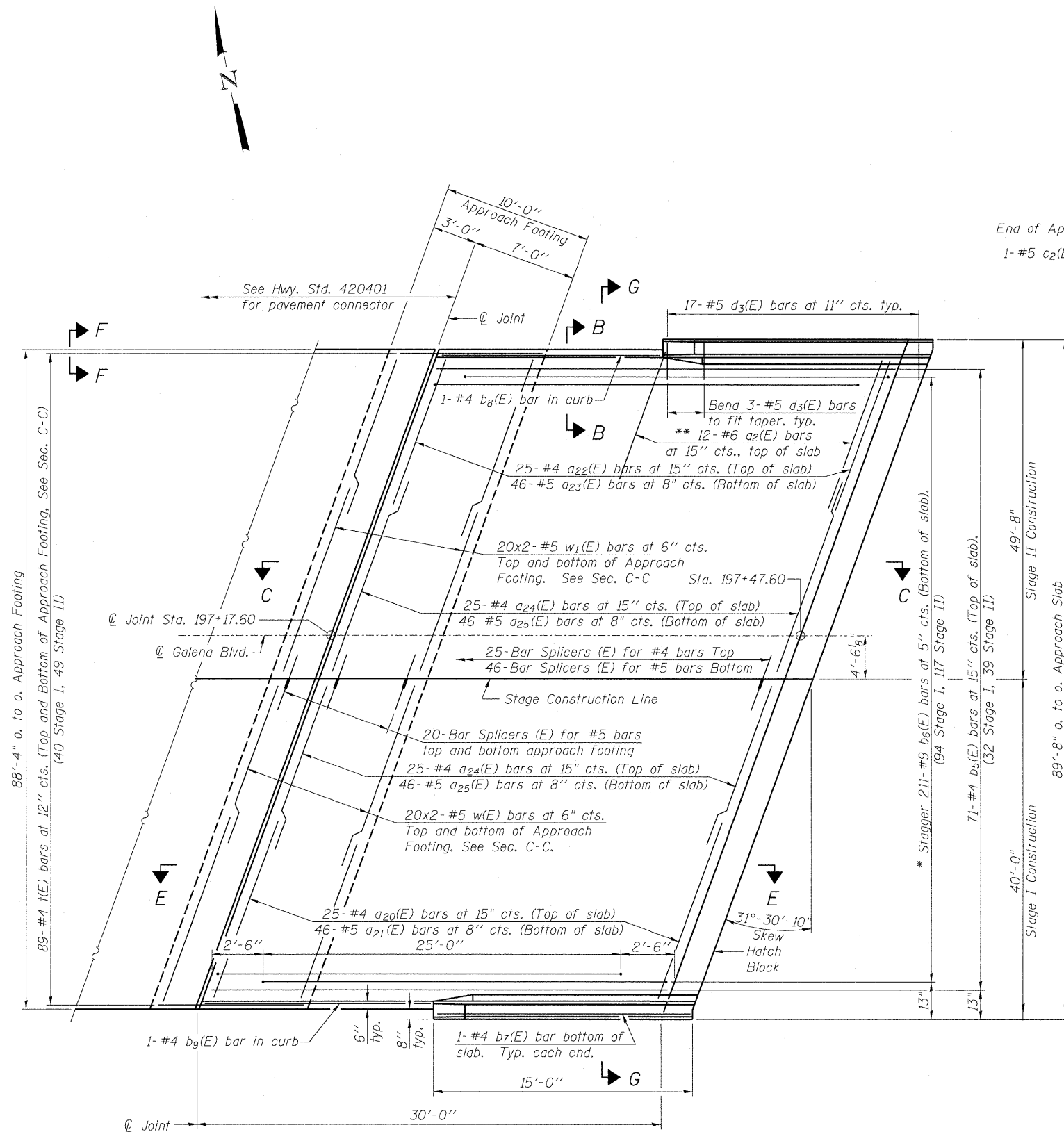


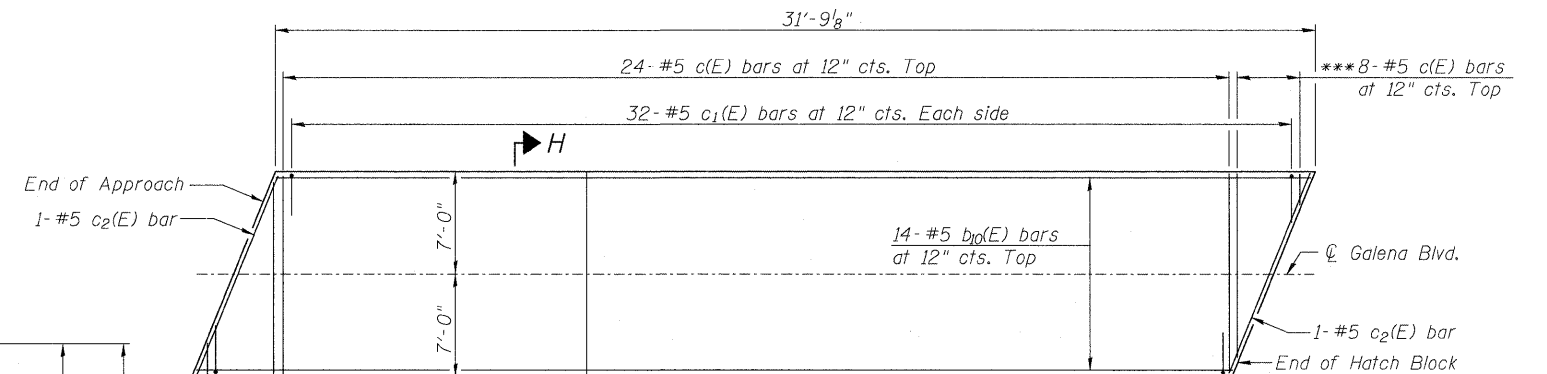
Notes:
 See sheet 20 of 39 for Sections C-C & G-G.
 See sheet 21 of 39 for Views B-B, E-E, and F-F.
 $a_{20}(E)$ thru $a_{25}(E)$, $w(E)$ and $w_1(E)$ bar spacings
 measured along ϕ Rdwy.



PLAN-WEST APPROACH

(Median not shown for clarity)

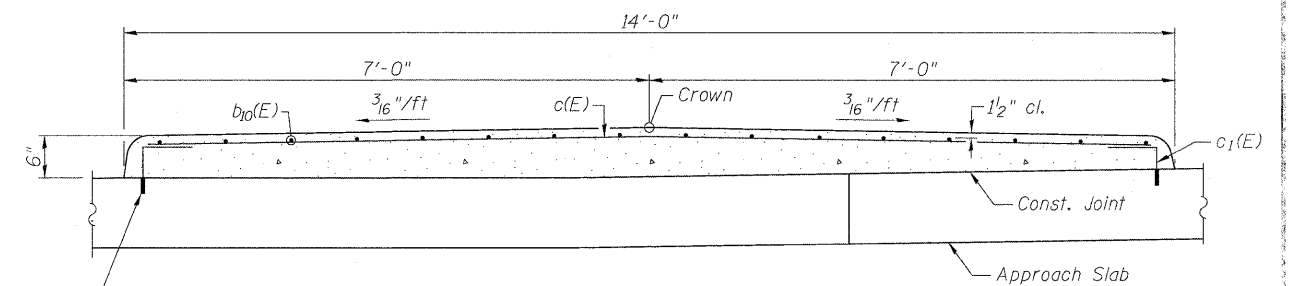
- * Tilt #9 $b_6(E)$ bars as required to maintain clearance.
- ** Space between $a_{20}(E)$ or $a_{22}(E)$ bars, typ. each parapet.



MEDIAN PLAN

(West Approach Median shown, East Approach Median similar)

*** Order c(E) bars full length. Cut to fit skew and use remainder of bars in opposite end.



SECTION H-H

$3/4$ " ϕ Galvanized expansion anchor or Ferrule Loop Slab Insert (Proof Load 6600 lb). Provide plastic caps for protection during construction. The cost of expansion anchors/inserts is included in the cost of Reinforcement Bars, Epoxy Coated.

MIN. BAR LAP

- #4 Bar = 2'-4"
- #5 Bar = 2'-7"

(Sheet 1 of 4)



USER NAME =
 FILE NAME =
 PLOT SCALE =
 PLOT DATE =

DESIGNED - MTH
 CHECKED - ADB
 DRAWN - AJF
 CHECKED - MTH

REVISED -
 REVISED -
 REVISED -
 REVISED -

**STATE OF ILLINOIS
 DEPARTMENT OF TRANSPORTATION**

**BRIDGE APPROACH SLAB DETAILS
 STRUCTURE NO. 045-0037**

SHEET NO. 18 OF 39 SHEETS

F.A.P. RTE.	SECTION	COUNTY	TOTAL SHEETS	SHEET NO.
573	61HB-1-R	KANE	110	68
			CONTRACT NO. 60K76	
ILLINOIS FED. AID PROJECT				