

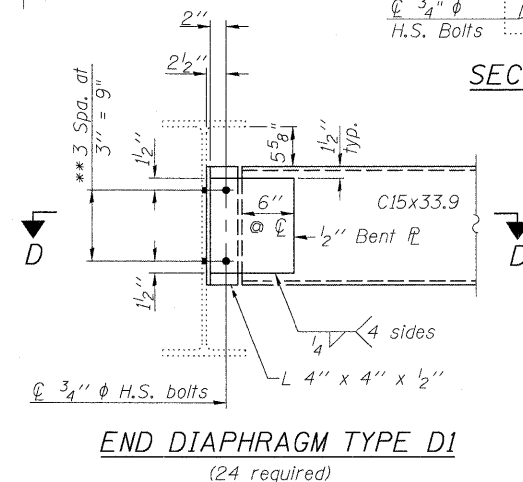
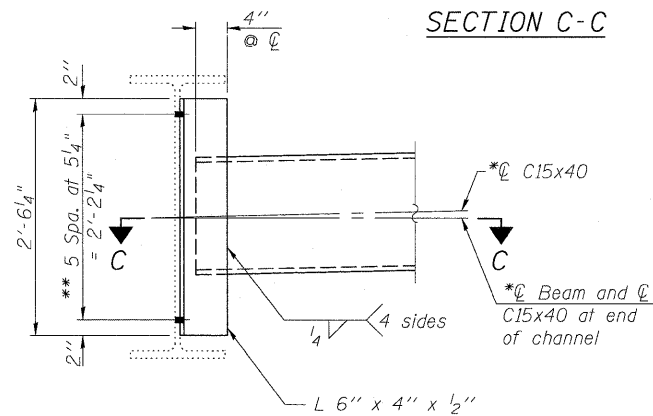
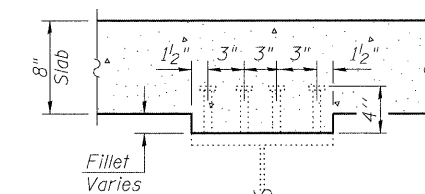
**END DIAPHRAGM REMOVAL**  
 Cost included with Structural Steel Removal.

**SECTION A-A**

**SECTION C-C**

**SECTION D-D**

**SECTION E-E**



**Notes:**

- Two hardened washers required for each set of oversized holes.
- \*C15x50 are permitted to facilitate material acquisition. Calculated weight of structural steel is based on the C15x40. The alternate, if utilized, shall be provided at no additional cost to the Department.
- \*\*3/4" φ HS bolts, 1 5/16" φ holes.
- Holes shall be subpunched or subdrilled 1/4" smaller than the diameter specified and reamed in the field to specified diameter. Contractor shall field verify that proposed bolt locations do not conflict with existing holes from end diaphragm connection.
- End Diaphragms at stage construction line shall be replaced during Stage I Construction.
- The nuts of the existing diaphragms between Beams 6 & 7 shall be loosened during Stage I Removal and replaced after the completion of Stage II Construction. The nuts of the new end diaphragms between Beams 6 & 7 shall be finger tightened until after the completion of Stage II Construction.
- Work this sheet with Sheet 27 of 39.

(Sheet 1 of 2)



USER NAME =	DESIGNED - MTH	REVISED -
FILE NAME =	CHECKED - ADB	REVISED -
PLOT SCALE =	DRAWN - AJF	REVISED -
PLOT DATE =	CHECKED - MTH	REVISED -

**STATE OF ILLINOIS  
 DEPARTMENT OF TRANSPORTATION**

**STEEL DETAILS  
 STRUCTURE NO. 045-0037**

SHEET NO. 26 OF 39 SHEETS

F.A.P. RTE.	SECTION	COUNTY	TOTAL SHEETS	SHEET NO.
573	61HB-1-R	KANE	110	76
			CONTRACT NO. 60K76	

ILLINOIS FED. AID PROJECT