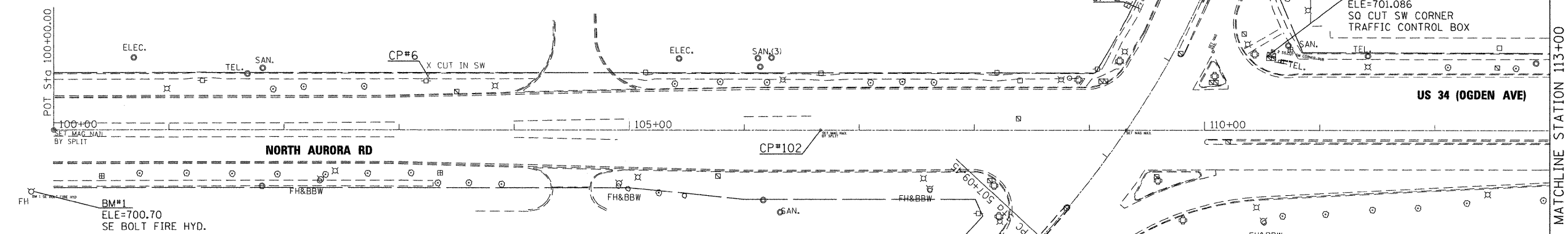




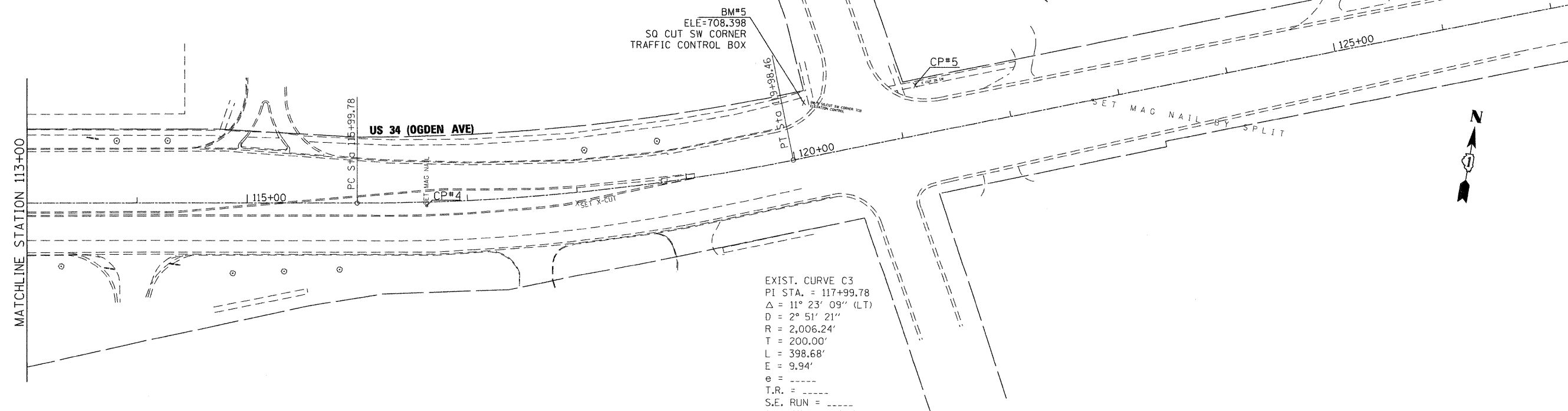
EXIST. CURVE C2
 PI STA. = 509+29.82
 $\Delta = 31^\circ 06' 47''$ (LT)
 $D = 7^\circ 14' 17''$
 $R = 791.59'$
 $T = 220.37'$
 $L = 429.85'$
 $E = 30.10'$
 $e = \text{-----}$
 T.R. = -----
 S.E. RUN = -----
 P.C. STA. = 507+09.45
 P.T. STA. = 511+39.31



CONTROL POINTS AND BENCHMARKS

POINT	NORTH	EAST	STATION	OFFSET	ELEVATION	DESCRIPTION
2	1,862,572.736	1,025,092.794	509+28.82	44.85 LT	700.26	X CUT IN SW SURVEY POINT
4	1,862,587.417	1,025,821.137	116+62.89	3.37 RT	707.83	FND MAG NAIL SURVEY POINT
5	1,862,770.844	1,026,239.629	121+20.36	44.90 LT	706.99	X CUT IN SW SURVEY POINT
6	1,862,409.673	1,024,494.142	103+25.05	47.05 LT	698.82	X CUT IN SW SURVEY POINT
50	1,862,172.585	1,024,966.713	505+11.79	40.56 RT	694.15	SET 5/8 REBAR
102	1,862,421.086	1,024,838.579	106+66.45	0.000	698.55	FND MAG NAIL BY SPLIT PDT
110	1,861,822.600	1,024,585.242	500+00.00	0.000	694.21	FND IRON ROD W/CAP PDT

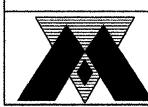
MATCHLINE STATION 506+00
 SEE SHEET NO. AT-02



EXIST. CURVE C3
 PI STA. = 117+99.78
 $\Delta = 11^\circ 23' 09''$ (LT)
 $D = 2^\circ 51' 21''$
 $R = 2,006.24'$
 $T = 200.00'$
 $L = 398.68'$
 $E = 9.94'$
 $e = \text{-----}$
 T.R. = -----
 S.E. RUN = -----
 P.C. STA. = 115+99.78



FILE NAME = P:\2009\ME99086_Ver-Vor_P\IT\CADD\W022_US34\Sheet\DI60L22-AT01.dgn
 PLOT SCALE = 50.0000 / IN.
 USER NAME = Millennia Professional Services



200 22ND Street, Suite 216, Lombard, IL 60148
 630.795.9118 voice, 630.839.2566 fax
 www.mps-ill.com
MILLENNIA PROFESSIONAL SERVICES

DESIGNED - CJD	REVISED -
DRAWN - CJD	REVISED -
CHECKED - TVN	REVISED -
DATE - 5/27/2011	REVISED -

**STATE OF ILLINOIS
 DEPARTMENT OF TRANSPORTATION**

US ROUTE 34
AT NORTH AURORA ROAD /RAYMOND DRIVE
 SCALE: 1"=50'

ALIGNMENT, TIES, AND BENCHMARKS
 SHEET NO. 1 OF 2 SHEETS
 STA. 100+00 TO STA. 115+99.78

F.A.P. RTE. 311	SECTION 652X-N-3	COUNTY	TOTAL SHEETS 34	SHEET NO. 6
CONTRACT NO. 60L22				

AT-01