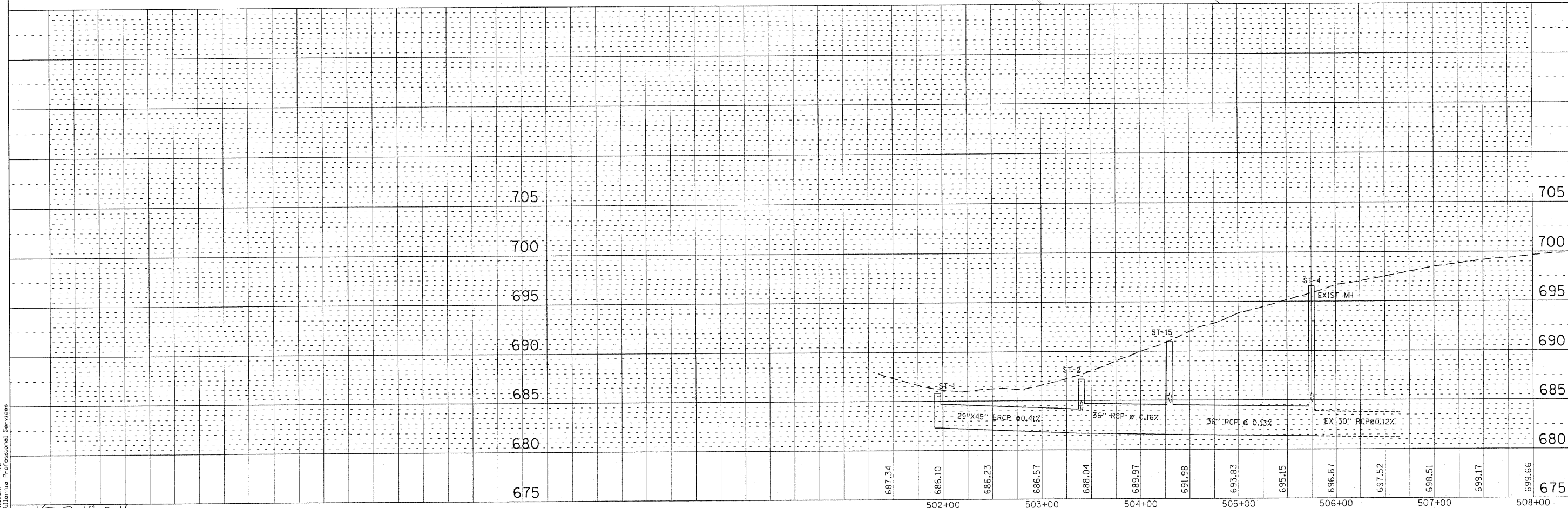
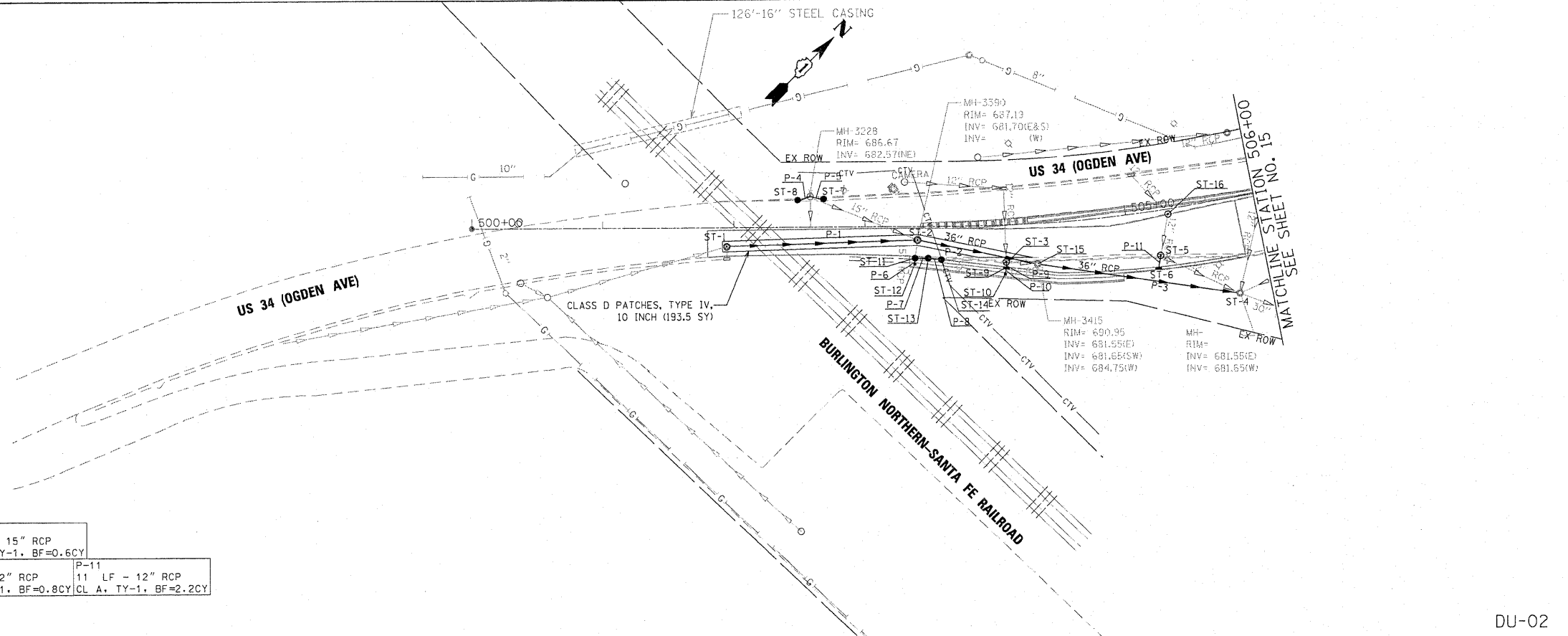


PLAN	DATE
SURVEYED	BY
PLOTTED	DATE
REVISIONS	
RT OF MAY CHECKED	
CADD FILE NAME	
NO.	

PROFILE	DATE
REVISIONS	BY
GRADES CHECKED	DATE
STRUCTURE NOTATIONS OK'D	
NOTE BOOK	
FILE NAME	
PLLOT SCALE	
USER NAME	

ST-01 STA 501+94.6, 14.4' RT 6' MH TY A W/FR & LIDS T1 CL RIM = 685.80 INV (NE) = 682.30	ST-07 STA 502+68.48, 21.67' LT 2' CB TYPE C W/FR & LIDS TY-1, OL RIM = 686.89 INV (W) = 682.67	ST-13 STA 503+48.01, 24.10' RT 2' CB TY C W/FR & LIDS T1, OL RIM = 686.3 INV (S) = 681.31
ST-02 STA 503+40.0, 10.25' RT 6' MH TYPE A W/FR & LIDS T1 CL RIM = 687.19 INV = 681.70 (N,S)	ST-08 STA 502+48.57, 20.91' LT 2' CB TYPE C W/FR & LIDS T1, OL RIM = 686.76 INV (W) = 682.67	ST-14 STA 503+58.07, 25.31' RT 2' CB TYPE C W/FR & LIDS T1, OL RIM = 688.79 INV (W) = 681.51
ST-03 STA 504+06.6, 28.1' RT 4' CB TY D FR & LIDS TY-1 CL RIM = 689.31 INV = 684.71 (E)	ST-09 STA 504+06.5, 32.65' RT 2' CB TY C W/ TY-24 F&G RIM = 689.25 INV = 684.73 (E,W)	ST-15 STA 504+29.88, 30.71' RT 4' CB TY D W/FR & LIDS TY-1 CL RIM = 690.95 INV (SW) = 681.65 INV (E) = 681.55
ST-04 STA 505+75.21, 73.29' RT EX MH TO BE ADJUSTED RIM = INV (SW) = 681.65	ST-10 STA 504+05.6, 37.34' RT 2' INLET TYPE A W/ TY-9 F&G RIM = 692.02 INV = 684.75	ST-16 EX CB STA 505+32.48, 3.93' RT FR & LIDS TY-1 CL RIM = 694.68 INV (E) = 689.58
ST-05 STA 505+22.12, 34.34' RT 4' CB TY A W/FR & LIDS T1, CL RIM = 694.38 INV (S) = 689.18	ST-11 STA 503+38.0, 24.12' RT 4' CB TY A W/FR & LIDS T1, OL RIM = 684.91 INV = 681.11 (E)	
ST-06 STA 505+19.19, 43.92' RT 2' CB TYPE C W/ TY-24 F&G RIM = 694.06 INV (W) = 689.21	ST-12 STA 503+37.8, 28.59' RT 2' INLET TY A W/ TY-9 F&G RIM = 687.68 INV (SW) = 681.15	

P-01 146 LF - 29" X 45" ERCP CL A, TY-1, BF=44.1 CY	P-2 94 LF - 36" RCP CL A, TY-1, BF=67.5 CY	P-3 158 LF - 36" RCP CL A, TY-1, BF=104.5 CY	P-4 11 LF - 15" RCP CL A, TY-1, BF=2.8 CY	P-5 11 LF - 15" RCP CL A, TY-1, BF=2.9 CY	P-6 5 LF - 15" RCP CL A, TY-1, BF=0.6 CY
P-7 10 LF - 15" RCP CL A, TY-1, BF=1.7 CY	P-8 10 LF - 15" RCP CL A, TY-1, BF=3.8 CY	P-9 5 LF - 12" RCP CL A, TY-1, BF=1.0 CY	P-10 5 LF - 12" RCP CL A, TY-1, BF=0.8 CY	P-11 11 LF - 12" RCP CL A, TY-1, BF=2.2 CY	



KE 7-18-2011

300 22ND Street, Suite 216, Lombard, IL 60148
630.765.0118 voice, 630.839.2566 fax
WWW.MPS-IL.COM

MILLENNIA PROFESSIONAL SERVICES

DESIGNED	TVN	REVISED	-
DRAWN	TVN	REVISED	-
CHECKED	RPD	REVISED	-
DATE	7/15/2011	REVISED	-

STATE OF ILLINOIS
DEPARTMENT OF TRANSPORTATION

US ROUTE 34
AT NORTH AURORA ROAD /RAYMOND DRIVE

DRAINAGE AND UTILITY PLAN

SCALE: 1"=50' SHEET NO. 2 OF 2 SHEETS STA. 500+00 TO STA. 506+00

F.A.P. RTE.	SECTION	COUNTY	TOTAL SHEETS	SHEET NO.
311	652X-N-3	DUPAGE	34	16
CONTRACT NO. 60L22				

DU-02

FILE NAME: P:\2009\ME24006_Ver\PH1\CADD\W022.US34\Sheet\16L22-0102.dgn
PLOT SCALE: 1"=50'
USER NAME: KMillennia Professional Services

FED. ROAD DIST. NO. 1 ILLINOIS FED. AID PROJECT
P:\2009\ME24006_Ver\PH1\CADD\W022.US34\Sheet\16L22-0102.dgn