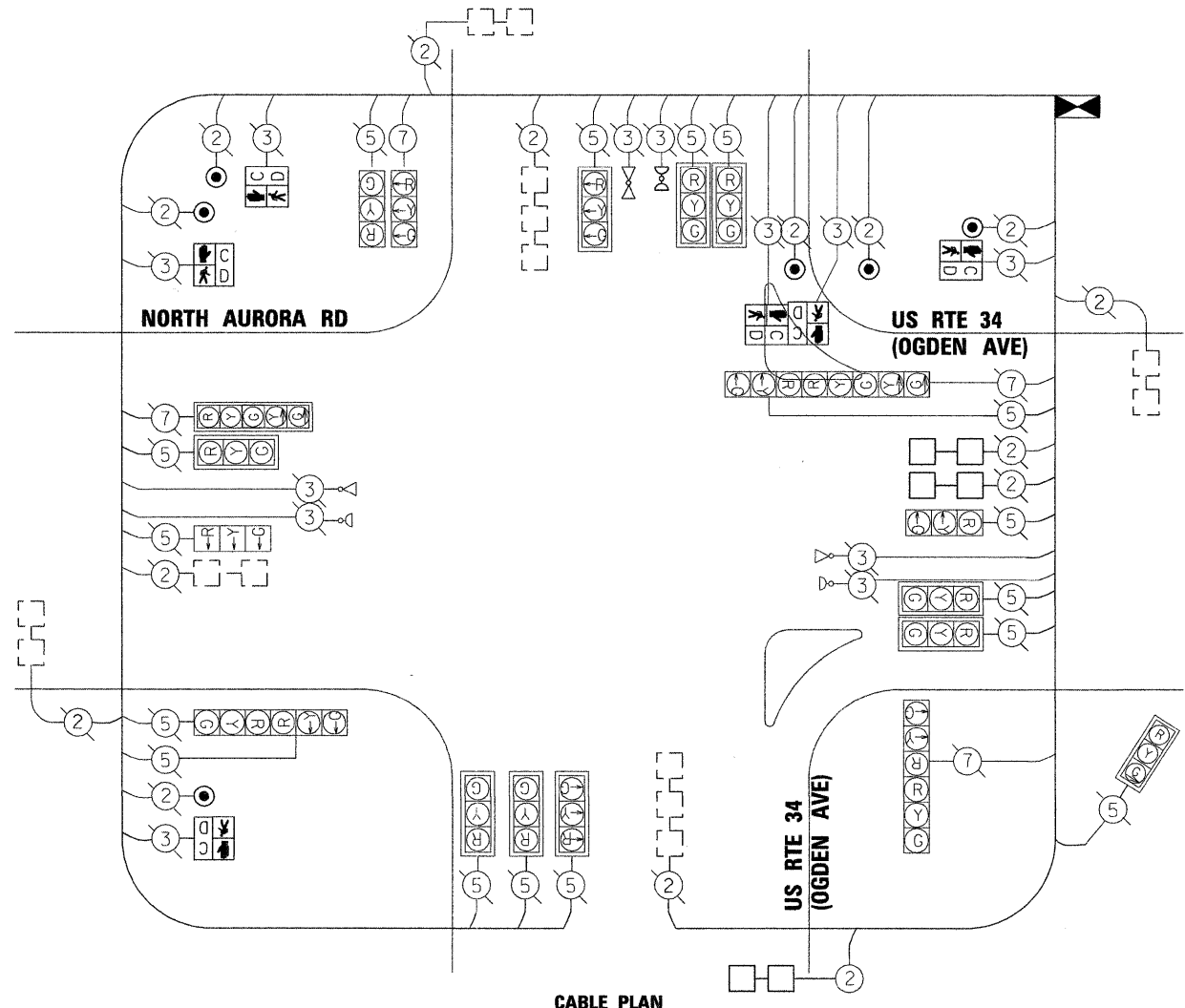


SCHEDULE OF QUANTITIES

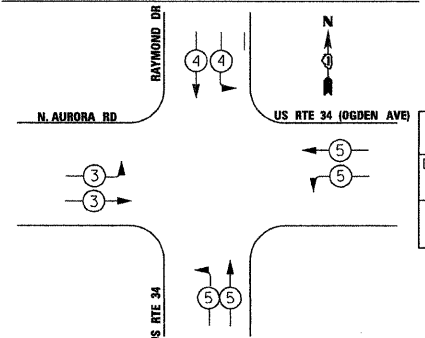
ITEM	UNIT	QUANTITY
CONDUIT IN TRENCH, 2" DIA., GALVANIZED STEEL	FOOT	240
HANDHOLE	EACH	1
REBUILD EXISTING HANDHOLE	EACH	1
TRENCH AND BACKFILL FOR ELECTRICAL WORK	FOOT	240
ELECTRIC CABLE IN CONDUIT, SIGNAL, NO. 14 2C	FOOT	475
PEDESTRIAN SIGNAL HEAD, LED, 1-FACE, BRACKET MOUNTED WITH COUNTDOWN TIMER	EACH	4
PEDESTRIAN SIGNAL HEAD, LED, 2-FACE, BRACKET MOUNTED WITH COUNTDOWN TIMER	EACH	1
DETECTOR LOOP REPLACEMENT	FOOT	90
PEDESTRIAN PUSH-BUTTON	EACH	6
REMOVE EXISTING HANDHOLE	EACH	1



CABLE PLAN LEGEND

EXISTING	PROPOSED	DESCRIPTION
⊗	⊗	8" (200mm) TRAFFIC SIGNAL SECTION
⊗	⊗	12" (300mm) TRAFFIC SIGNAL SECTION
⊗	⊗	12" (300mm) PEDESTRIAN SIGNAL SECTION
⊗	⊗	PEDESTRIAN SIGNAL HEAD, INTERNATIONAL SYMBOL, WITH COUNTDOWN TIMER
⊗	⊗	CONTROLLER CABINET
⊗	⊗	SERVICE INSTALLATION
⊗	⊗	VEHICLE DETECTOR, INDUCTION LOOP
⊗	⊗	MAGNETIC DETECTOR
⊗	⊗	EMERGENCY VEHICLE LIGHT DETECTOR
⊗	⊗	CONFIRMATION BEACON
⊗	⊗	PUSHBUTTON DETECTOR
⊗	⊗	DENOTES NUMBER OF CONDUCTORS. ALL CABLE NO. 14 EXCEPT AS INDICATED. ALL LOOP DETECTOR CABLE TO BE SHIELDED.
⊗	⊗	SIGNAL FACE WITH BACKPLATE "P" INDICATES PROGRAMMED HEAD.
⊗	⊗	RAILROAD CONTROL CABINET
⊗	⊗	ILLUMINATED SIGN, FIBER OPTIC "NO LEFT TURN"
⊗	⊗	ILLUMINATED SIGN, FIBER OPTIC "NO RIGHT TURN"
H/C	H/C	GROUND ROD AT HANDHOLE, DOUBLE HANDHOLE, OR CONTROLLER
P	P	GROUND ROD AT POST OR MAST ARM POLE
S	S	GROUND ROD AT ELECTRIC SERVICE INSTALLATION
①	①	GROUND CABLE IN CONDUIT NO. 6 SOLID COPPER (GREEN)
②④	②④	FIBER OPTIC CABLE IN CONDUIT NO. 62.5/125 2-MM12F & SM12F
⊗	⊗	UNINTERRUPTIBLE POWER SUPPLY (UPS)
⊗	⊗	PERFORMED LOOP DETECTION

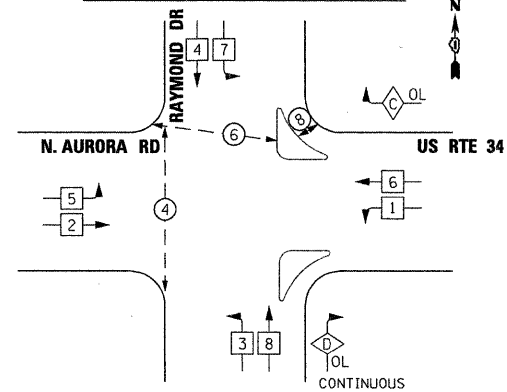
EMERGENCY VEHICLE PREEMPTION SEQUENCE



PROPOSED EMERGENCY VEHICLE PREEMPTORS

EMERGENCY VEHICLE PREEMPTOR	3	4	5	6
MOVEMENT	→	↔	←	↔

PROPOSED CONTROLLER SEQUENCE



PHASE DESIGNATION DIAGRAM

LEGEND

⊗	SINGLE ENTRY PHASE
⊗	DUAL ENTRY PHASE
⊗	OVERLAP
⊗	PEDESTRIAN PHASE
•	NUMBER REFERS TO ASSOCIATED PHASE
OVERLAP LETTER	PERMISSIVE PHASE + PROTECTED PHASE
C	= 6 + 7
D	= NONE + ALL PHASE

I.D.O.T TRAFFIC SIGNAL INSTALLATION ELECTRICAL SERVICE REQUIREMENTS

TYPE	NO. OF LAMPS	WATTAGE INCAND.	L.E.D.	OPERATION	TOTAL WATTAGE
SIGNAL (RED)		135	17	0.50	
(YELLOW)		135	25	0.25	
(GREEN)		135	15	0.25	
ARROW		135	12	0.10	
PED. SIGNAL	6	90	25	1.00	150
CONTROLLER		100	100	1.00	
ILLUM. SIGN		84		0.05	
HOT RIGHT		135	12	1.00	
VIDEO VEH. SENSOR		15	15	1.00	
FLASHER				0.50	
TOTAL					150

FOUNDATION (DEPTH)	(FEET) (m)	CABLE SLACK	(FEET) (m)	VERTICAL	(FEET) (m)
TYPE A - POST	4 , (1.2)	HANDHOLE	6.5 , (2.0)	ALL FOUNDATION	1.0 , (0.3)
D - CONTROLLER	4 , (1.2)	DOUBLE HANDHOLE	13 , (4.0)	MAST ARM (1.) POLE	20'+L-2 = (6m+L-0.6m)=
E - M. ARM POLE	()	SIGNAL POST	2 , (0.6)	BRACKET MOUNTED	13 , (4.0)
24" (600mm)	10 , (3.0)	CONTROLLER CAB.	1 , (0.3)	PED. PUSHBUTTON	4 , (1.2)
30" (600mm)	15 , (4.5)	FIBER OPTIC	13 , (4.0)	ELECTRIC SERVICE	13.5 , (4.1)
36"	15 , (4.5)	ELECTRIC SERVICE	1 , (0.3)	SERVICE TO GROUND	13 , (4.1)
42"	15 , (4.5)	GROUND CABLE	1 , (0.3)	POST MOUNTED	6 , (1.8)

ILLINOIS DEPARTMENT OF TRANSPORTATION
 DIVISION OF HIGHWAY/DISTRICT 1
 201 CENTER CT/SCHAUMBURG, IL 60196-1096
 ENERGY SUPPLY - CONTACT:
 PHONE: 630-691-4379
 COMPANY: COMMONWEALTH EDISON

DESIGNED - CJD	REVISED -
DRAWN - CJD	REVISED -
CHECKED - TVN	REVISED -
DATE - 5/31/2011	REVISED -

STATE OF ILLINOIS DEPARTMENT OF TRANSPORTATION

US ROUTE 34 AT NORTH AURORA ROAD /RAYMOND DRIVE

SCHEDULE OF QUANTITIES, CABLE PLAN, PHASE DESIGNATION DIAGRAM, AND EMERGENCY VEHICLE PREEMPTION SEQUENCE

F.A.P. RTE.	SECTION	COUNTY	TOTAL SHEETS	SHEET NO.
311	652X-N-3	DUPAGE	34	21
CONTRACT NO. 60L22				

FILE NAME = P:\2009\ME09006_Ver-Vor_Plan\CADD\W022.US34\Sh1a\0160L22-SHT-TS02.dgn
 PLOT SCALE = 20/80000 / IN.
 USER NAME = Millennium Professional Services

MILLENNIA PROFESSIONAL SERVICES
 200 22ND Street, Suite 216, Lombard, IL 60148
 630.795.0110 voice, 630.839.2566 fax
 www.mps-il.com