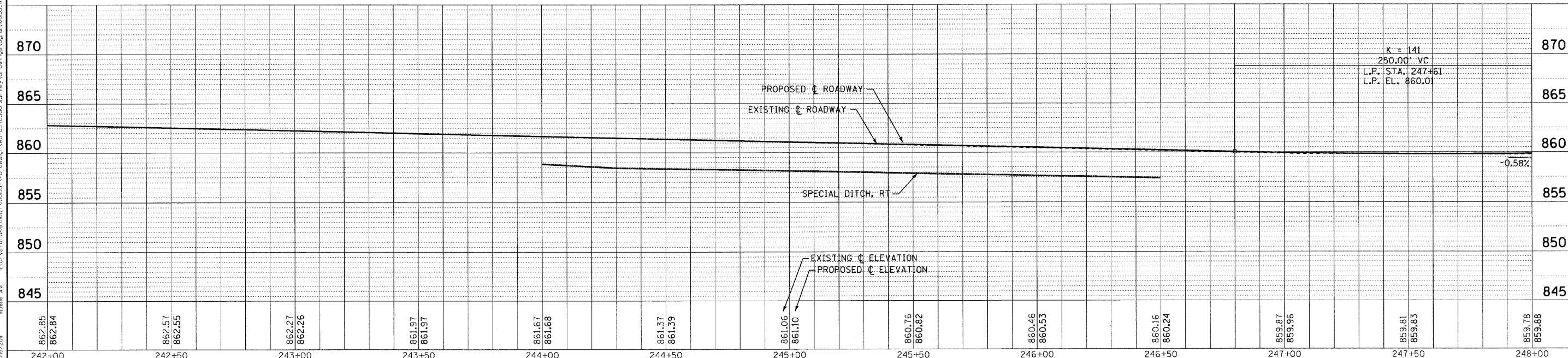


COPYRIGHT © 2008 BY BAXTER & WOODMAN, INC. ...
 LICENSE NO. 184-00191 - EXPIRES 4/30/2011
 7/8/2010 10:56:16 AM



862.85 862.84	862.57 862.55	862.27 862.26	861.97 861.97	861.67 861.68	861.37 861.39	861.06 861.10	860.76 860.82	860.46 860.53	860.16 860.24	859.87 859.96	859.51 859.63	859.78 859.88
242+00	242+50	243+00	243+50	244+00	244+50	245+00	245+50	246+00	246+50	247+00	247+50	248+00



DESIGNED -	DJS	REVISED -	-1-28-11 PER IDOT REVIEW
DRAWN -	CJC	REVISED -	
CHECKED -	LDH	REVISED -	
DATE -	09/10/10	FILE -	100153_W05-DU3.shx

STATE OF ILLINOIS
DEPARTMENT OF TRANSPORTATION

IL ROUTE 31 - AMES ROAD TO EDGEWOOD ROAD
DRAINAGE AND UTILITIES

SCALE: H: 1"=20' V: 1"=5'

STA. 242+00 TO STA. 248+00

F.A.P. RTE.	SECTION	COUNTY	TOTAL SHEETS	SHEET NO.
336	2010-049-N	MCHENRY	50	23
FED. ROAD DIST. NO. 1 (ILLINOIS)			CONTRACT NO. 60L25	