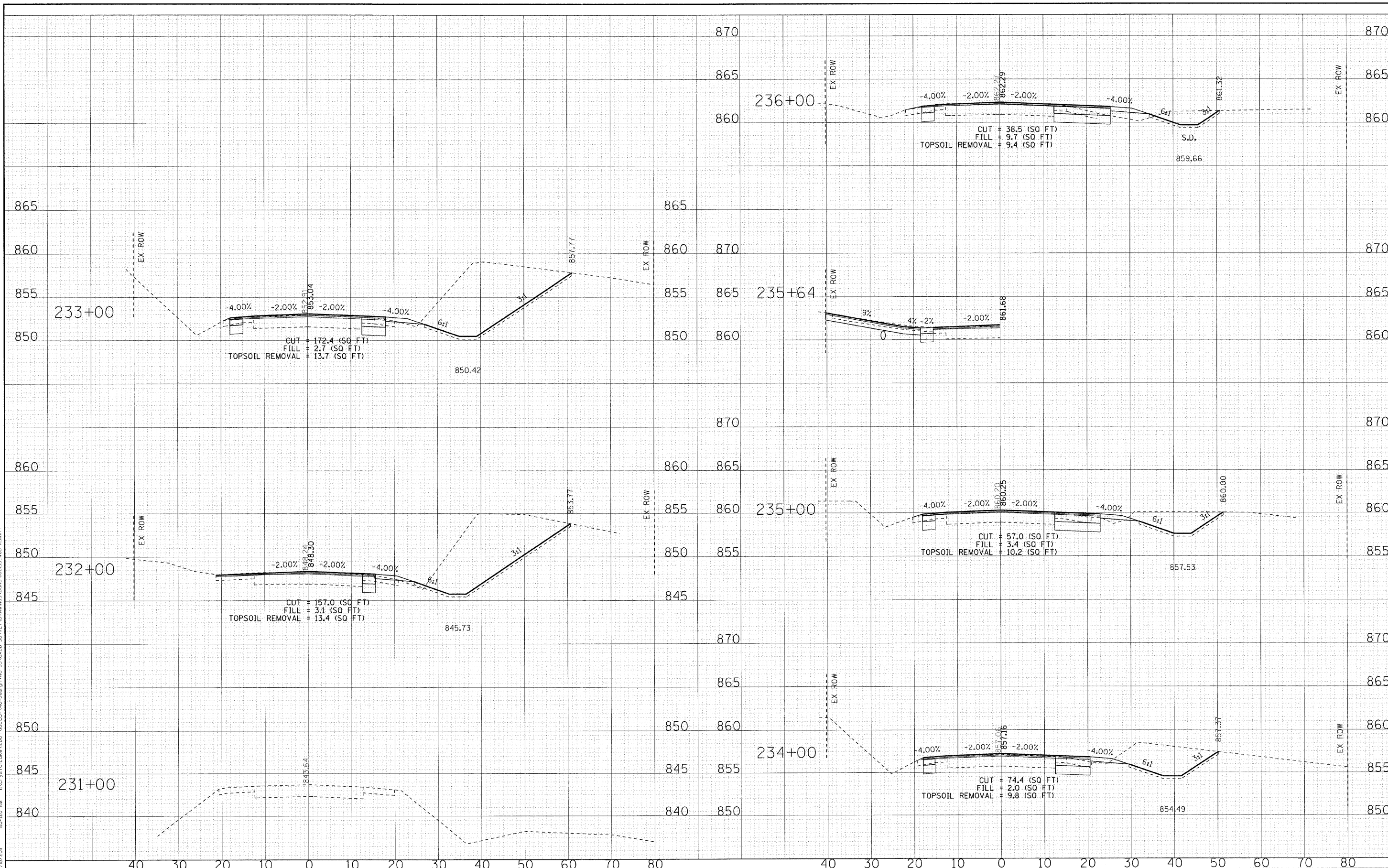


COPYRIGHT © 2010 BY BAXTER & WOODMAN, INC.
 PROJECT: ILLINOIS ROUTE 31
 LICENSE NO. 184-00121 - EXPIRES 4/30/2011
 11:27:57 AM 11/15/2010



**STATE OF ILLINOIS
DEPARTMENT OF TRANSPORTATION**

**IL ROUTE 31 - AMES ROAD TO EDGEWOOD ROAD
CROSS SECTIONS**

DESIGNED - DJS	REVISED - 1-28-11 PER IDOT REVIEW
DRAWN - CJC	REVISED - 3-14-11 PER IDOT REVIEW
CHECKED - LDH	REVISED -
DATE - 09/10/10	REVISED -

SCALE: H: 1"=10' V: 1"=5'	STA. 231+00 TO STA. 236+00	F.A. RTE. 336	SECTION 2010-049-N	COUNTY	TOTAL SHEETS 50	SHEET NO. 46
FED. ROAD DIST. NO. 1 ILLINOIS FED. AID PROJECT						

CONTRACT NO. 60L25