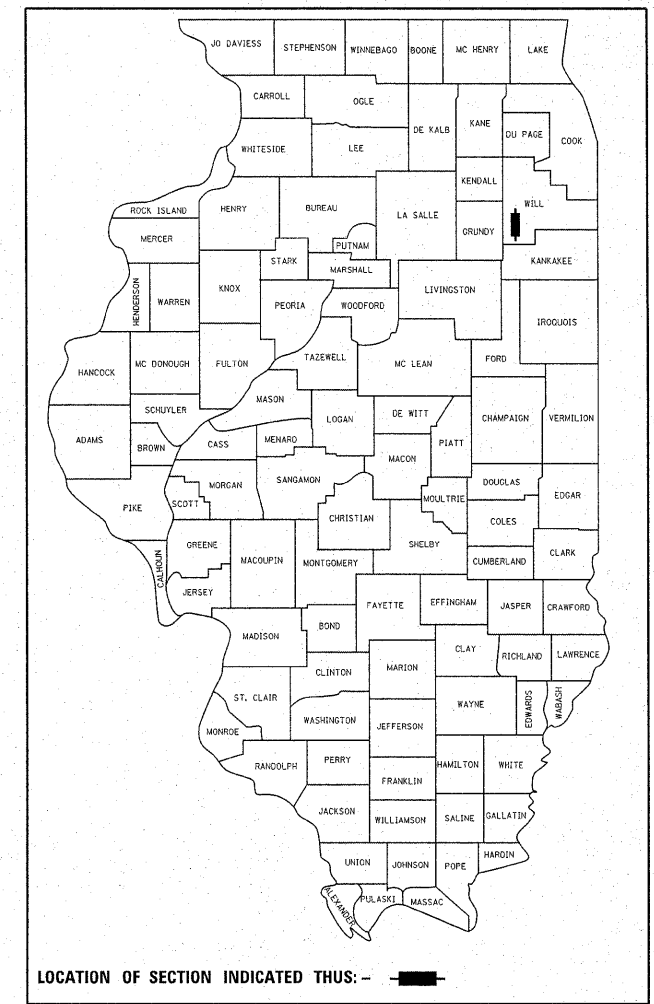


F.A.P. RTE.	SECTION	COUNTY	TOTAL SHEETS	SHEET NO.
846	4-N-3	WILL	68	1
FED. ROAD DIST. NO. 1		ILLINOIS	CONTRACT NO. 60L42	

**STATE OF ILLINOIS
DEPARTMENT OF TRANSPORTATION
DIVISION OF HIGHWAYS**

D-91-696-10



LOCATION OF SECTION INDICATED THUS: - [shaded rectangle] -

FOR INDEX OF SHEETS, SEE SHEET NO. 2

PROPOSED HIGHWAY PLANS

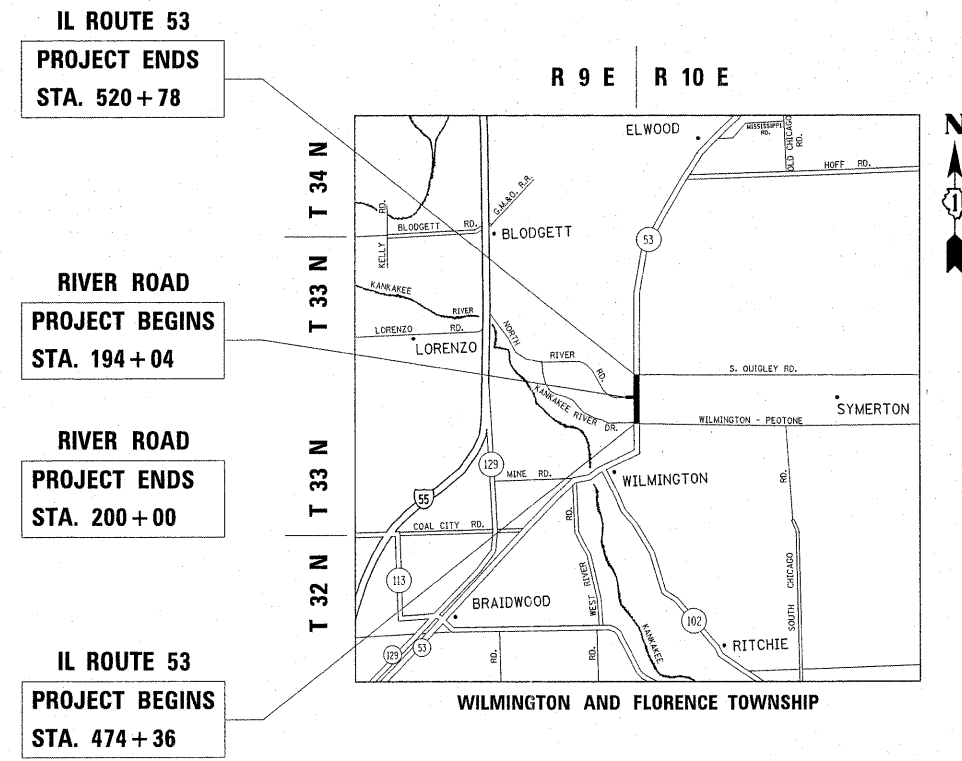
**F.A.P. 846: IL ROUTE 53
AT RIVER ROAD
SECTION: 4-N-3
INTERSECTION IMPROVEMENT
PROJECT: HSIP-0846(022) ✓ 4517-0846(022)
WILL COUNTY
C-91-696-10**

**PROJECT LOCATED IN THE
CITY OF WILMINGTON**

TRAFFIC DATA:

IL ROUTE 53:
2009 ADT = 6,700 - 8,900
SPEED LIMIT = 55 MPH

RIVER ROAD:
2009 ADT = 4,250
SPEED LIMIT = 55 MPH

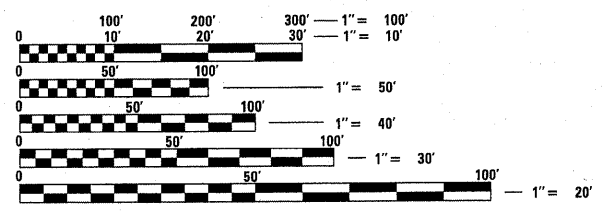


**IL ROUTE 53
PROJECT ENDS
STA. 520 + 78**

**RIVER ROAD
PROJECT BEGINS
STA. 194 + 04**

**RIVER ROAD
PROJECT ENDS
STA. 200 + 00**

**IL ROUTE 53
PROJECT BEGINS
STA. 474 + 36**



FULL SIZE PLANS HAVE BEEN PREPARED USING STANDARD ENGINEERING SCALES. REDUCED SIZED PLANS WILL NOT CONFORM TO STANDARD SCALES. IN MAKING MEASUREMENTS ON REDUCED PLANS, THE ABOVE SCALES MAY BE USED.

J.U.L.I.E.
JOINT UTILITY LOCATION INFORMATION FOR EXCAVATION
1-800-892-0123
OR 811

IL ROUTE 53:
GROSS AND NET LENGTH OF PROJECT = 4642 FEET = 0.89 MILES

RIVER ROAD:
GROSS AND NET LENGTH OF PROJECT = 596 FEET = 0.11 MILES

PROJECT ENGINEER: JENPAI CHANG (847) 705-4432
PROJECT MANAGER: KEN ENG (847) 705-4247

CONTRACT NO. 60L42

STATE OF ILLINOIS
DEPARTMENT OF TRANSPORTATION
DIVISION OF HIGHWAYS

SUBMITTED August 22, 2011

Diana M. O'Keefe
DEPUTY DIRECTOR OF HIGHWAYS, REGION ENGINEER

October 14, 2011
Scott E. Stitt, P.E.
acting ENGINEER OF DESIGN AND ENVIRONMENT

October 14, 2011
Christene M. Reed
DIRECTOR OF HIGHWAYS, CHIEF ENGINEER

**PRINTED BY THE AUTHORITY
OF THE STATE OF ILLINOIS**