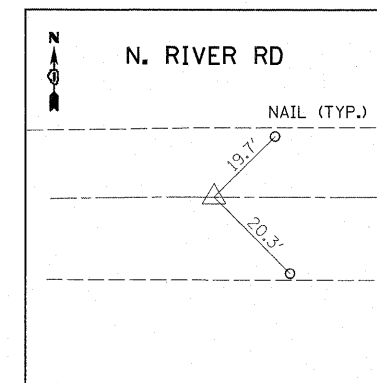
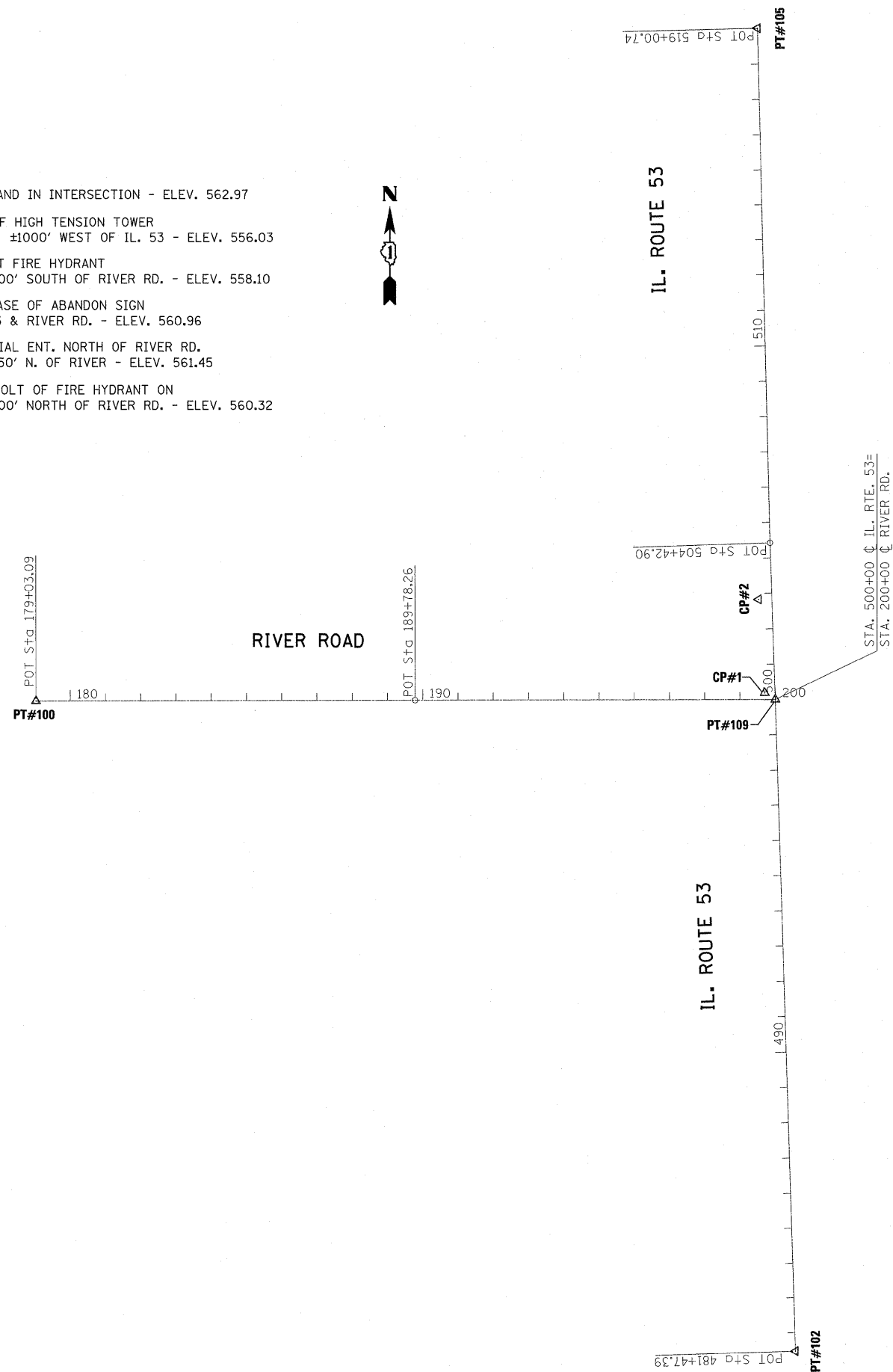


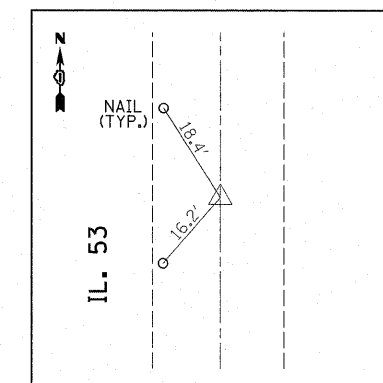
BENCHMARKS

- CP#1 - "X" CUT IN CONC. ISLAND IN INTERSECTION - ELEV. 562.97
- BM#1 - "□" IN CONC. BASE OF HIGH TENSION TOWER
SOUTH SIDE RIVER RD. ±1000' WEST OF IL. 53 - ELEV. 556.03
- BM#2 - "X" IN EASTERLY BOLT FIRE HYDRANT
EAST SIDE IL. 53 ±1000' SOUTH OF RIVER RD. - ELEV. 558.10
- BM#3 - "□" IN S.W. CONC. BASE OF ABANDON SIGN
IN N.W. CORNER IL. 53 & RIVER RD. - ELEV. 560.96
- CP#2 - MAG NAIL IN COMMERCIAL ENT. NORTH OF RIVER RD.
ON W. SIDE IL. 53 ±250' N. OF RIVER - ELEV. 561.45
- BM#4 - "X" SOUTHWESTERLY BOLT OF FIRE HYDRANT ON
EAST SIDE IL. 53 ±1000' NORTH OF RIVER RD. - ELEV. 560.32



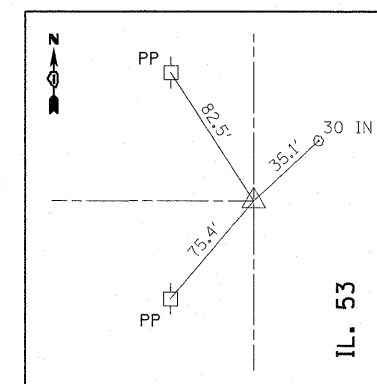
PT #100

MAG NAIL SET
STA. 179+03.09
N 1697576.3995
E 1037201.8763



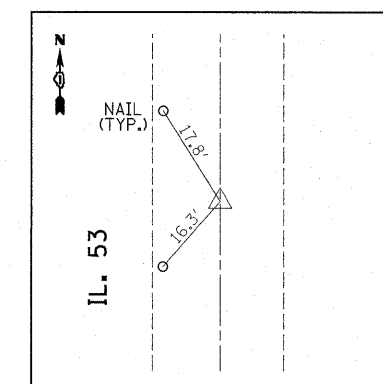
PT #105

MAG NAIL SET
STA. 519+00.74
N 1699482.6796
E 1039247.6525



PT #109

MAG NAIL SET C-C
N 1697582.6480
E 1039298.7809



PT #102

MAG NAIL SET
STA. 481+47.39
N 1695730.9224
E 1039356.1261

FILE NAME = P142009-sh4-ATB.dgn	USER NAME = becker.tcm	DESIGNED -	REVISED -
		DRAWN -	REVISED -
		CHECKED -	REVISED -
		DATE -	REVISED -

**STATE OF ILLINOIS
DEPARTMENT OF TRANSPORTATION**

**ALIGNMENT, TIES AND BENCHMARKS
IL ROUTE 53 AT RIVER ROAD**

SCALE: 1"= 200' SHEET NO. OF SHEETS STA. TO STA.

F.A.P. RTE. 846	SECTION 4-N-3	COUNTY WILL	TOTAL SHEETS 68	SHEET NO. 11
CONTRACT NO. 60L42				
ILLINOIS FED. AID PROJECT				