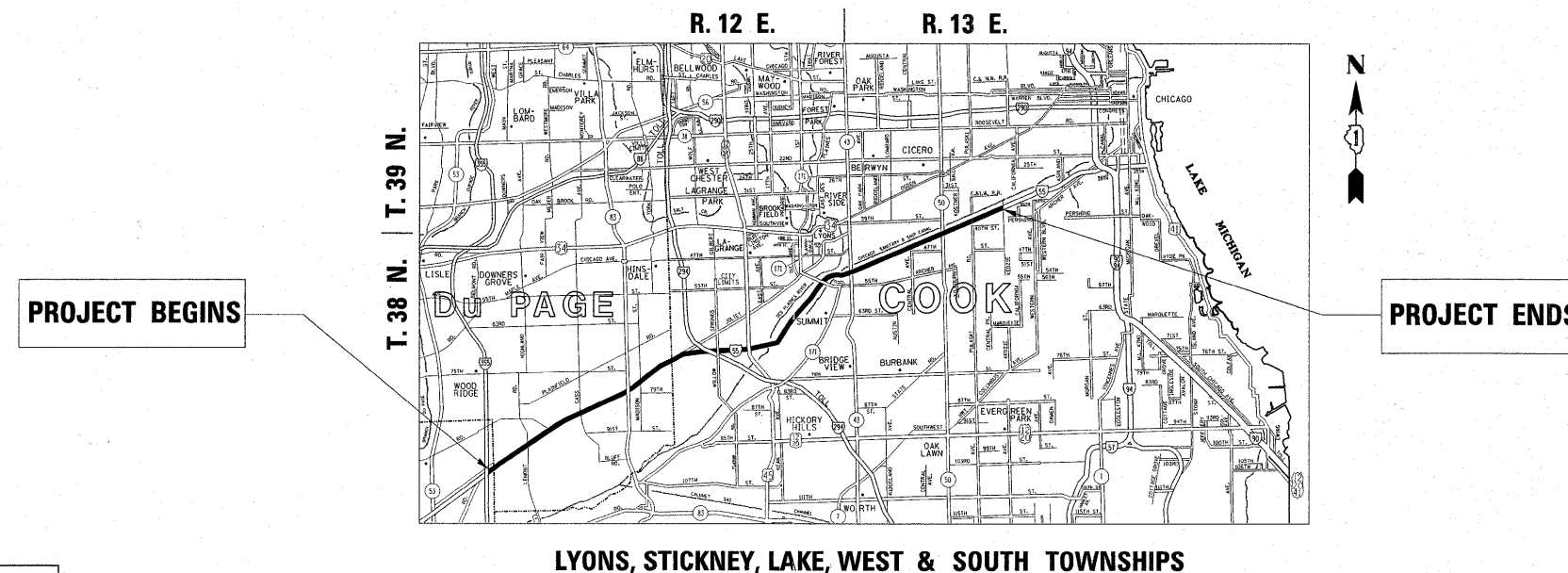


F.A.I. RTE.	SECTION	COUNTY	TOTAL SHEETS	SHEET NO.
55	2011-028-1	COOK & DuPAGE	B	1
FED. ROAD DIST. NO.	ILLINOIS	CONTRACT NO. 60P29		

**STATE OF ILLINOIS**  
**DEPARTMENT OF TRANSPORTATION**  
**DIVISION OF HIGHWAYS**  
**PROPOSED HIGHWAY PLANS**  
**F.A.I. ROUTE 55: (INTERSTATE 55)**  
**I-355 TO KEDZIE AVE.**  
**SECTION: 2011-028-1**  
**EXPRESSWAY CLEANING (SWEEPING)**  
~~PROJECT: CMI-055-7(261)269~~  
**COOK & DuPAGE COUNTIES**  
**C-91-505-11**

FOR INDEX OF SHEETS, SEE SHEET NO. 2



**J.U.L.I.E.**  
**JOINT UTILITY LOCATION INFORMATION FOR EXCAVATION**  
**1-800-892-0123**  
**OR 811**

**PROJECT ENGINEER: ROBERT BORO (847) 705-4237**  
**PROJECT MANAGER: ISSAM RAYYAN**

**CONTRACT NO. 60P29**

**STATE OF ILLINOIS**  
**DEPARTMENT OF TRANSPORTATION**  
**DIVISION OF HIGHWAYS**

SUBMITTED March 31 20 11  
*Dane O'Keefe*  
 DEPUTY DIRECTOR OF HIGHWAYS, REGION ENGINEER  
May 13 20 11  
*Scott E. Stett, P.E.*  
 Acting ENGINEER OF DESIGN AND ENVIRONMENT  
May 13 20 11  
*Christine M. Reed*  
 DIRECTOR OF HIGHWAYS, CHIEF ENGINEER

**PRINTED BY THE AUTHORITY**  
**OF THE STATE OF ILLINOIS**

INDEX OF SHEETS

1. TITLE SHEET
2. INDEX OF SHEETS  
APPLICABLE STATE STANDARDS
3. SUMMARY OF QUANTITIES  
SCHEDULE OF CLEANING STARTING DATES
4. EXPRESSWAY TYPICAL SECTIONS
5. EXPRESSWAY CLEANING
6. TRAFFIC CONTROL DETAILS FOR FREEWAY SHOULDER CLOSURES  
AND PARTIAL RAMP CLOSURES

STATE STANDARDS

- 701101-02 OFF-ROAD OPERATIONS, MULTILANE, 15' TO 24" FORM PAVEMENT EDGE  
 701426-04 LANE CLOSURE, MULTILANE INTERMITTENT OR MOVING OPERATION FOR SPEEDS >45 MPH  
 701901-01 TRAFFIC CONTROL DEVICES

GENERAL NOTES

FOR ALL MOVING OPERATIONS ON EITHER THE SHOULDER OR WHEN A LANE IS CLOSED, VEHICLES SHALL BE EQUIPED WITH TRUCK/TRAILER MOUNTED ATTENUATOR AND ARROW BOARD AS SHOWN IN DETAIL C OF HIGHWAY STANDARD 701426. WHILE OPERATIONS ARE ENTIRELY ON THE SHOULDER, ARROW BOARDS SHALL BE IN WARNING MODE (NO ARROW SHOWING).

TRUCK MOUNTED ATTENUATORS ARE REQUIRED ON ALL CLEANING OPERATIONS.

WHEN WITHIN THE INNER CITY THE TWO FOLLOW VEHICLES SHALL HAVE A TRUCK MOUNTED ATTENUATOR.

WHEN THE SHOULDER DOES NOT EXIST, OR IS NARROW, FOLLOWING VEHICLES SHOWN ON THE SHOULDER SHALL RIDE AS CLOSE TO THE EDGE OF THE TRAVELLED WAY AS PRACTICAL AND THE SPACING TO THE NEXT VEHICLE REDUCED TO APPROXIMATELY 150m (500 FT).

WATER TRUCKS USED TO CONTROL DUST PROPAGATION ARE ALLOWED TO OPERATE BY THEMSELVES. THEY SHALL AVOID SUDDEN STOPS.

ALL VEHICLES SHALL HAVE HEADLIGHTS AND EMERGENCY FLASHERS OPERATING AND SHALL DISPLAY AN AMBER COLORED OSCILLATING, ROTATING OR FLASHING LIGHT(S). AT LEAST ONE AMBER LIGHT IS TO BE VISIBLE FROM ANY DIRECTION.

ALL SWEEPERS, WATER TRUCKS AND FOLLOW VEHICLES SHALL HAVE ARROW BOARDS, AND APPROPRIATE SIGNS.

LONGITUDINAL DISTANCES MAY BE ADJUSTED TO FIT FIELD CONDITIONS. THE LATERAL PLACEMENT OF THE FLAGGER MAY BE VARIED FROM THAT SHOWN ON THE STANDARD.

FILE NAME =	USER NAME = midjje	DESIGNED -	REVISED -	<b>STATE OF ILLINOIS DEPARTMENT OF TRANSPORTATION</b>	INDEX OF SHEETS AND STATE STANDARDS	F.A.I. RTE.	SECTION	COUNTY	TOTAL SHEETS	SHEET NO.	
c:\pr-work\p\dot\midjje\0136184\SweepingContract2009.dgn		DRAWN -	REVISED -			55	2011-028-1	COOK & DuPAGE	6	2	
PLOT SCALE = 50,0000' / in.		CHECKED -	REVISED -			CONTRACT NO. 60P29					
PLOT DATE = 9/30/2011		DATE -	REVISED -			ILLINOIS FED. AID PROJECT					
SCALE:						SHEET NO. OF SHEETS		STA. TO STA.			

SUMMARY OF QUANTITIES

CODE NO.	ITEM	UNIT	100% STATE URBAN 0044 0044		
			MAIN QUANTITY	DUPAGE COUNTY	COOK COUNTY
X0329915	FULL EXPRESSWAY CLEANING CYCLE	EACH	26	9	17

I-55 LEFT SHOULDER EXPRESSWAY CLEANING  
SCHEDULE OF STARTING DATE - 2012

1st FULL CLEANING CYCLE	.....	January 4, 2012
2nd FULL CLEANING CYCLE	.....	January 16, 2012
3rd FULL CLEANING CYCLE	.....	January 30, 2012
4th FULL CLEANING CYCLE	.....	February 13, 2012
5th FULL CLEANING CYCLE	.....	February 27, 2012
6th FULL CLEANING CYCLE	.....	March 12, 2012
7th FULL CLEANING CYCLE	.....	March 26, 2012
8th FULL CLEANING CYCLE	.....	April 9, 2012
9th FULL CLEANING CYCLE	.....	April 23, 2012
10th FULL CLEANING CYCLE	.....	May 7, 2012
11th FULL CLEANING CYCLE	.....	May 21, 2012
12th FULL CLEANING CYCLE	.....	June 4, 2012
13th FULL CLEANING CYCLE	.....	June 18, 2012
14th FULL CLEANING CYCLE	.....	July 2, 2012
15th FULL CLEANING CYCLE	.....	July 16, 2012
16th FULL CLEANING CYCLE	.....	July 30, 2012
17th FULL CLEANING CYCLE	.....	August 13, 2012
18th FULL CLEANING CYCLE	.....	August 27, 2012
19th FULL CLEANING CYCLE	.....	September 10, 2012
20th FULL CLEANING CYCLE	.....	September 24, 2012
21st FULL CLEANING CYCLE	.....	October 8, 2012
22nd FULL CLEANING CYCLE	.....	October 22, 2012
23rd FULL CLEANING CYCLE	.....	November 5, 2012
24th FULL CLEANING CYCLE	.....	November 19, 2012
25th FULL CLEANING CYCLE	.....	December 3, 2012
26th FULL CLEANING CYCLE	.....	December 17, 2012
(RECOMMENDED TO BE COMPLETED ON OR BEFORE December 28, 2012)		

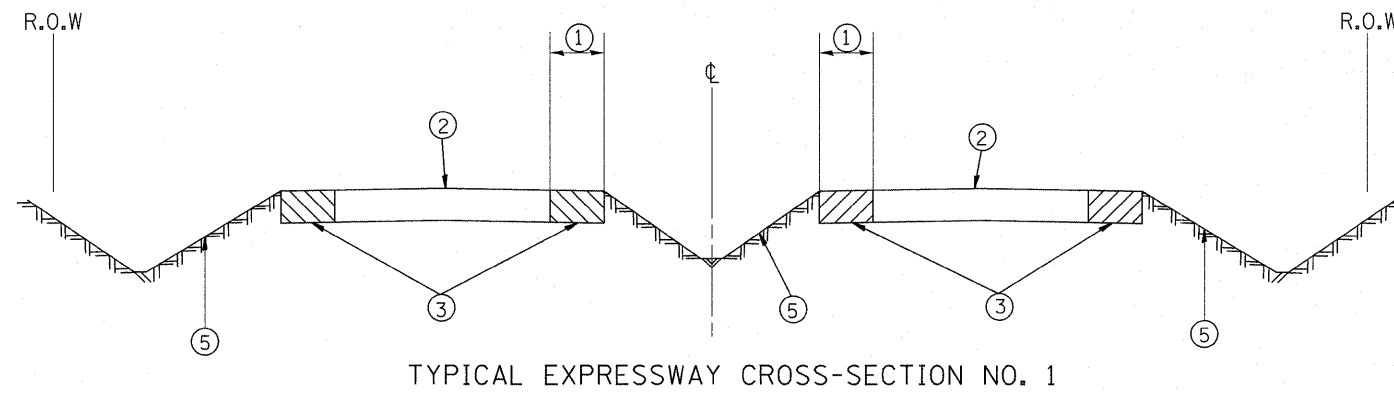
I-55 LEFT SHOULDER EXPRESSWAY CLEANING  
SCHEDULE OF STARTING DATE - 2013

1st FULL CLEANING CYCLE	.....	January 3, 2013
2nd FULL CLEANING CYCLE	.....	January 14, 2013
3rd FULL CLEANING CYCLE	.....	January 28, 2013
4th FULL CLEANING CYCLE	.....	February 11, 2013
5th FULL CLEANING CYCLE	.....	February 25, 2013
6th FULL CLEANING CYCLE	.....	March 11, 2013
7th FULL CLEANING CYCLE	.....	March 25, 2013
8th FULL CLEANING CYCLE	.....	April 8, 2013
9th FULL CLEANING CYCLE	.....	April 22, 2013
10th FULL CLEANING CYCLE	.....	May 6, 2013
11th FULL CLEANING CYCLE	.....	May 20, 2013
12th FULL CLEANING CYCLE	.....	June 3, 2013
13th FULL CLEANING CYCLE	.....	June 17, 2013
14th FULL CLEANING CYCLE	.....	July 1, 2013
15th FULL CLEANING CYCLE	.....	July 15, 2013
16th FULL CLEANING CYCLE	.....	July 29, 2013
17th FULL CLEANING CYCLE	.....	August 12, 2013
18th FULL CLEANING CYCLE	.....	August 26, 2013
19th FULL CLEANING CYCLE	.....	September 9, 2013
20th FULL CLEANING CYCLE	.....	September 23, 2013
21st FULL CLEANING CYCLE	.....	October 7, 2013
22nd FULL CLEANING CYCLE	.....	October 21, 2013
23rd FULL CLEANING CYCLE	.....	November 4, 2013
24th FULL CLEANING CYCLE	.....	November 18, 2013
25th FULL CLEANING CYCLE	.....	December 2, 2013
26th FULL CLEANING CYCLE	.....	December 16, 2013
(RECOMMENDED TO BE COMPLETED ON OR BEFORE December 27, 2013)		

NOTES:

- SCHEDULE MAY VARY AS DIRECTED BY THE ENGINEER.
- THE CONTRACTOR MAY NOT START CLEANING CYCLES BEFORE THE DATES SCHEDULED IN THE PLANS WITHOUT WRITTEN AUTHORIZATION FROM THE ENGINEER.
- NO WORK WILL BE ALLOWED DURING ANY LEGAL HOLIDAY PERIOD.
- ALL SCHEDULES OF ANTICIPATED STARTING DATES SHOWN ARE TENTATIVE AS DETERMINE BY THE DEPARTMENT'S OPERATIONAL NEEDS.

FILE NAME =	USER NAME = midjja	DESIGNED -	REVISED -	<b>STATE OF ILLINOIS DEPARTMENT OF TRANSPORTATION</b>	SUMMARY OF QUANTITIES AND SCHEDULE OF STARTING DATES			F.A.I. RTE. 55	SECTION 2011-028-1	COUNTY COOK & DuPAGE	TOTAL SHEETS 6	SHEET NO. 3
cs:\pw_work\pawidot\midjja\d0136184\SweepingContract2009.dgn		DRAWN -	REVISED -		SCALE:	SHEET NO. OF SHEETS	STA. TO STA.	ILLINOIS FED. AID PROJECT				
		CHECKED -	REVISED -									
		DATE -	REVISED -									



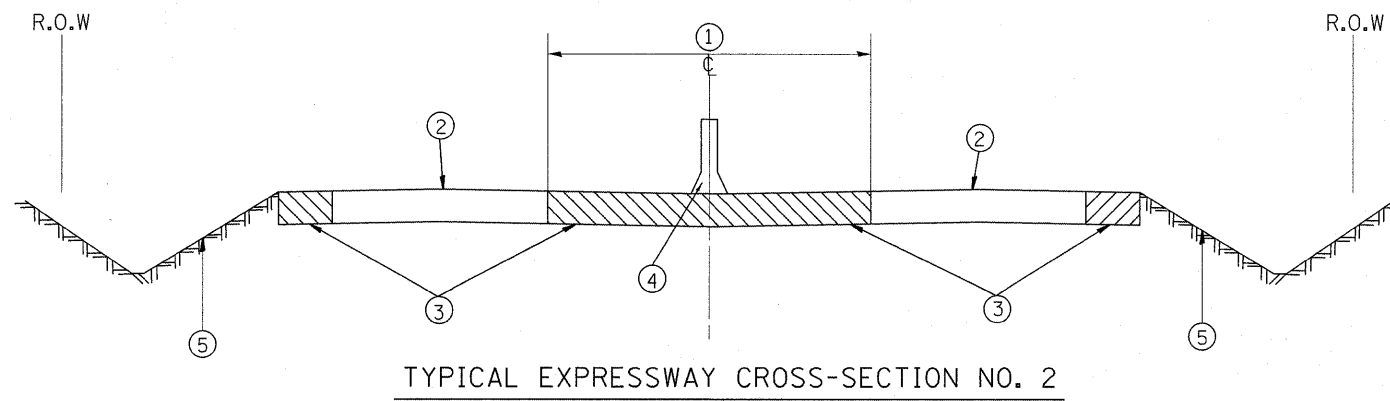
TYPICAL EXPRESSWAY CROSS-SECTION NO. 1

LEGEND

- ① AREA OF EXPRESSWAY SHOULDER CLEANING AND RUBBISH REMOVAL
- ② TRAVELED ROADWAY
- ③ STABILIZED SHOULDER OR MEDIAN
- ④ CONCRETE BARRIER
- ⑤ NON STABILIZED SURFACE

NOTE:

- A) ALL LOCATIONS OF GUARDRAIL ON LEFT SHOULDERS SHALL BE CLEANED BY HAND LABORING UNDERNEATH AND 10 FEET BEHIND STABILIZED AND NON STABILIZED AREAS. THIS WORK SHALL BE CONSIDERED AS INCLUDED IN THE CONTRACT UNIT PRICE FOR ALL FULL CLEANING CYCLES.
- B) DEBRIS SHALL BE REMOVED FROM ALL STABILIZED AREAS, UNDER AND 10 FEET BEHIND ALL GUARDRAIL AND ALL AGGREGATE/ STONE SHOULDERS REGARDLESS OF WIDTH.



TYPICAL EXPRESSWAY CROSS-SECTION NO. 2

FILE NAME =	USER NAME = msdyja	DESIGNED -	REVISED -	<b>STATE OF ILLINOIS DEPARTMENT OF TRANSPORTATION</b>	<b>TYPICAL I-55 EXPRESSWAY CROSS-SECTIONS</b>	F.A.I. RTE.	SECTION	COUNTY	TOTAL SHEETS	SHEET NO.	
ct:\pw_work\pmsdot\msdyja\d0136184\SweepingContract2009.dgn	PLOT SCALE = 50.0000' / in.	DRAWN -	REVISED -			55	2011-028-1	COOK & DU PAGE	6	4	
PLOT DATE = 9/30/2011	DATE -	CHECKED -	REVISED -			SCALE: SHEET NO. OF SHEETS STA. TO STA.		CONTRACT NO. 60P29			
						[ILLINOIS] FED. AID PROJECT					

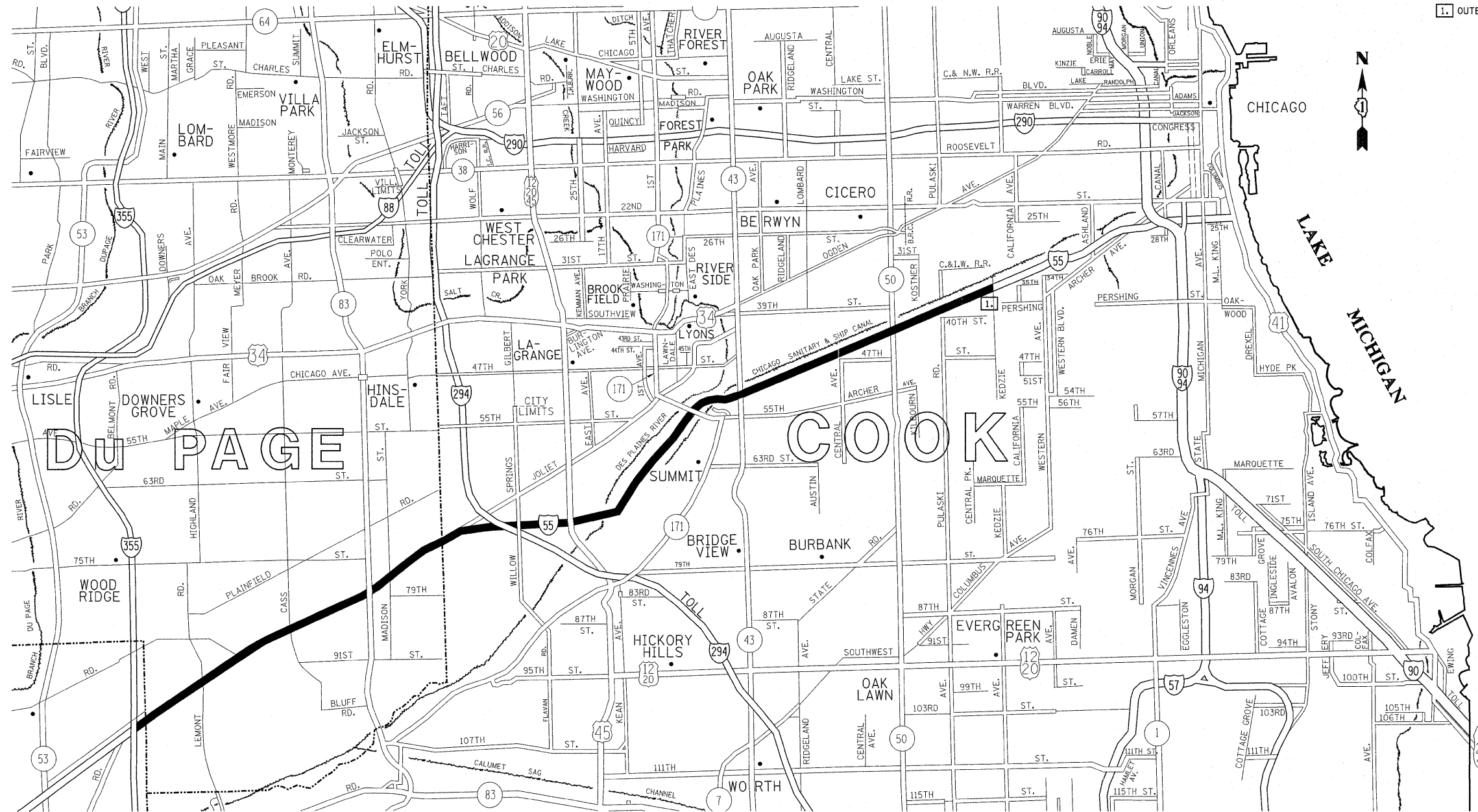
DAY CLEANING ONLY

Stevenson Expressway

Interstate 55 (Stevenson Expressway) from Kedzie Ave. to I-355 and all accident investigation sites.

ACCIDENT INVESTIGATION SITES:

- 1. OUTBOUND INTERSTATE 55 AT KEDZIE AVENUE

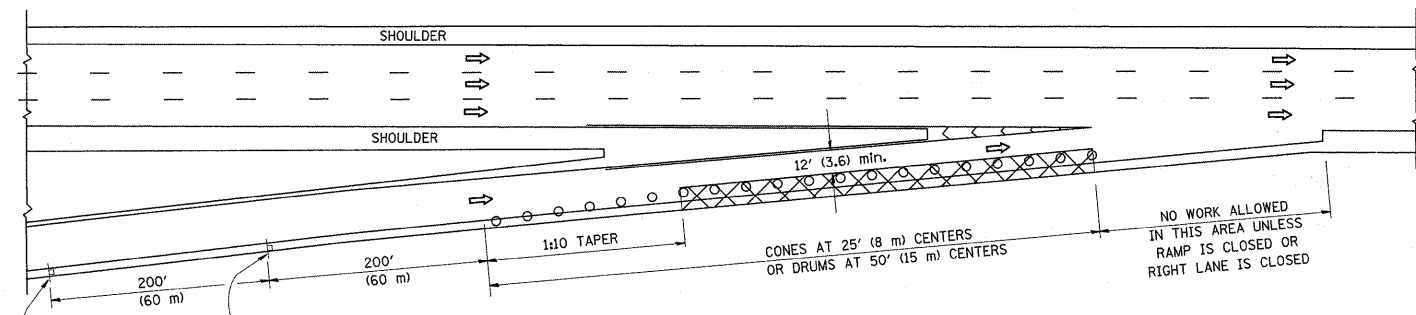


- DISTRICT NO. 1**
- STATE HIGHWAYS & EXPRESSWAYS WITHIN STATE JURISDICTION (EXCEPT TOLLWAYS)
  - STATE HIGHWAYS & EXPRESSWAYS TO BE CLEANED
  - FUTURE HIGHWAYS
  - VARIOUS AGENCIES HIGHWAYS

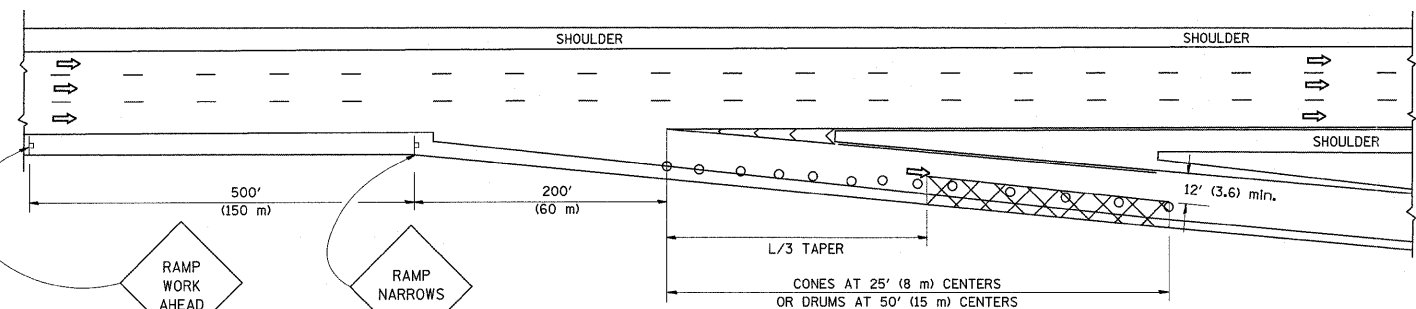
FILE NAME =	USER NAME = mdjjs	DESIGNED -	REVISED -	<b>STATE OF ILLINOIS DEPARTMENT OF TRANSPORTATION</b>	<b>I-55 EXPRESSWAY CLEANING LOCATION MAP</b>	F.A.I. RTE.	SECTION	COUNTY	TOTAL SHEETS	SHEET NO.	
es:\pwork\pwork\mdjjs\0136184\SweepingContract2009.dgn		DRAWN -	REVISED -			55	2011-028-I	COOK & DUPAGE	6	5	
PLOT SCALE = 50,000' / 1" =		CHECKED -	REVISED -			CONTRACT NO. 60P29					
PLOT DATE = 9/30/2011		DATE -	REVISED -			ILLINOIS FED. AID PROJECT					
				SCALE: SHEET NO. OF SHEETS STA. TO STA.							

PARTIAL RAMP CLOSURE DETAILS

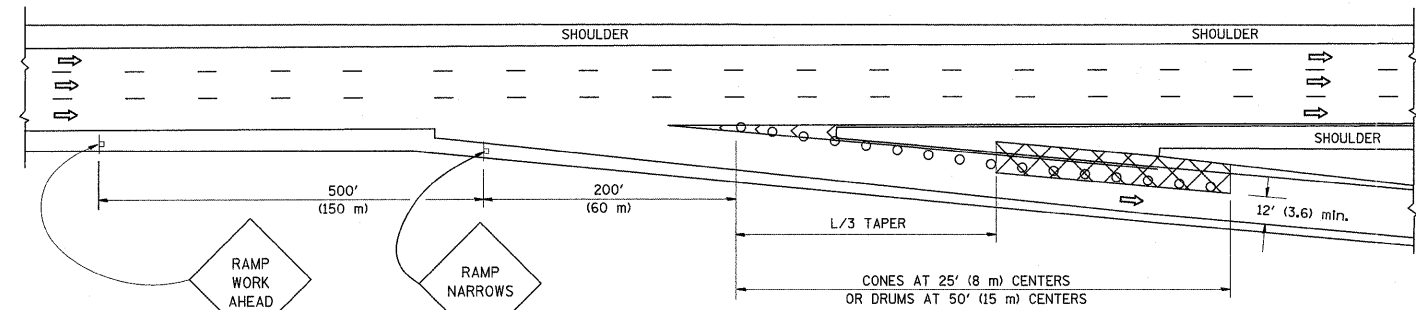
SHOULDER CLOSURE DETAILS



TYPICAL ENTRANCE RAMP



TYPICAL EXIT RAMP



TYPICAL EXIT RAMP

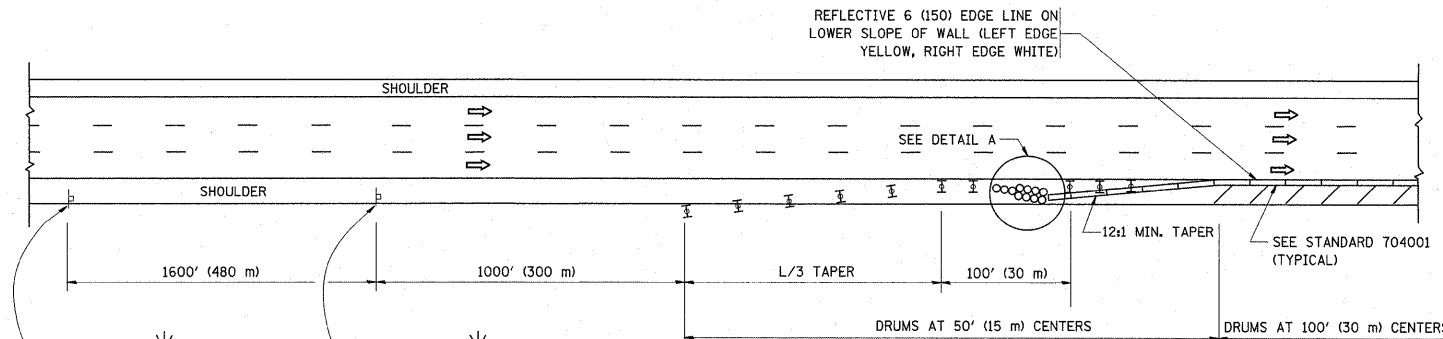
SYMBOLS

- ACTIVE WORK AREA
- SIGN ON PORTABLE OR PERMANENT SUPPORT
- FLAGGER WITH CONTROL SIGN
- TYPE II BARRICADE, DRUM OR VERTICAL BARRICADE WITH STEADY BURN MONO-DIRECTIONAL LIGHT
- CONE, DRUM OR BARRICADE

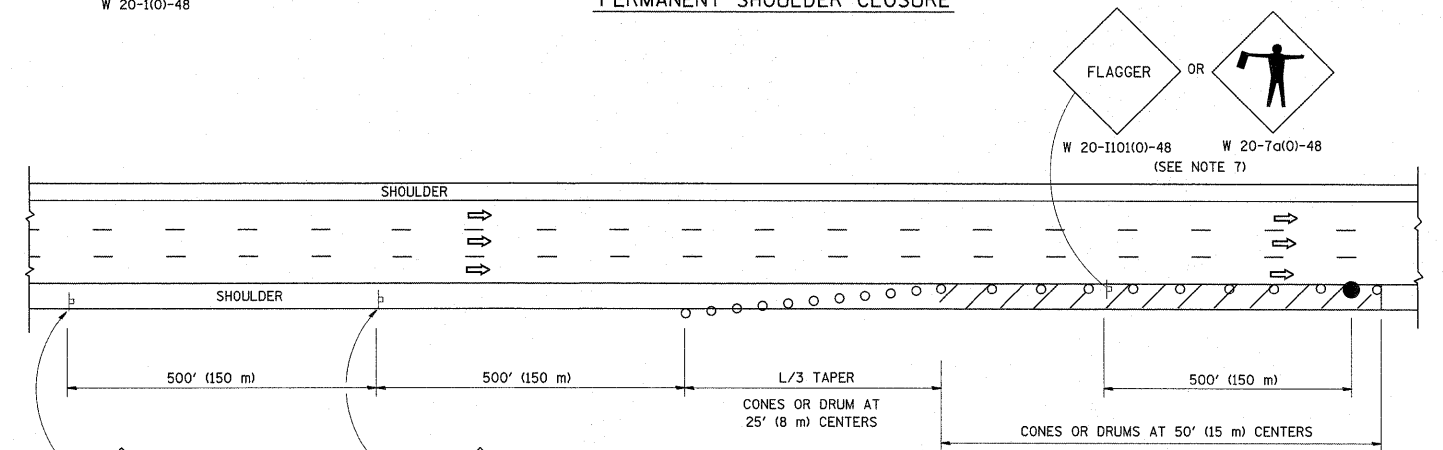
GENERAL NOTES

1. THE "L" DISTANCE EQUALS:
 

SPEED LIMIT	FORMULAS
45 mph (80 km/h) OR GREATER:	METRIC ENGLISH L=0.65(W/S) L=(W/S)
W = WIDTH OF OFFSET IN FEET (METERS)	
S = NORMAL POSTED SPEED MPH (KM/H)	
2. PLASTIC DRUMS WITH HIGH PERFORMANCE REFLECTIVE SHEETING AND STEADY BURNING LIGHTS ARE REQUIRED FOR ALL NIGHTTIME CLOSURES.
3. ALL SIGNS SHALL BE POST MOUNTED IF THE CLOSURE TIME EXCEEDS FOUR DAYS.
4. FLASHING LIGHTS SHALL BE USED DURING THE HOURS OF DARKNESS AND SHALL BE INSTALLED ABOVE THE FIRST TWO SETS OF SIGNS.
5. THE IMPACT ATTENUATOR, TEMPORARY IS NOT REQUIRED WHEN THE TEMPORARY CONCRETE BARRIER WALL IS PROTECTED BY OR IS TIED INTO THE EXISTING GUARDRAIL. IF OFFSET IS LESS THAN 5 FEET USE NARROW USE TYPE DEVICE TO MEET NCHRP350.
6. AUTHORIZATION FROM THE DISTRICT'S BUREAU OF TRAFFIC IS REQUIRED FOR ALL FREEWAY CLOSURES.
7. THE FLAGGER AND FLAGGER SIGN ARE REQUIRED AT THE ABOVE WORK SITES WHEN:
  - a. FOUR OR MORE WORK VEHICLES ENTER THE TRAFFIC LANES IN A ONE HOUR PERIOD.
  - b. THE WORK AVTIVITY REQUIRES FREQUENT ENCROACHMENT INTO THE LANE OPEN TO TRAFFIC.
 THE FLAGGER SHALL BE STATIONED APPROXIMATELY 100' (30 m) TO 200' (60 m) IN ADVANCE OF THE WORKERS.



PERMANENT SHOULDER CLOSURE



DAYTIME SHOULDER CLOSURE

ARRAY DESIGN PER MANUFACTURER TO BE NCHRP 350 COMPLIANT.

DETAIL "A" IMPACT ATTENUATOR, TEMPORARY (SEE NOTE 5)

ALL DIMENSIONS ARE IN INCHES (MILLIMETERS) UNLESS OTHERWISE SHOWN.

FILE NAME =	USER NAME = midyja	DESIGNED -	REVISED - 04-03	<b>STATE OF ILLINOIS DEPARTMENT OF TRANSPORTATION</b>	<b>TRAFFIC CONTROL DETAILS FOR FREEWAY SHOULDER CLOSURES AND PARTIAL RAMP CLOSURES</b>	F.A.I. RTE.	SECTION	COUNTY	TOTAL SHEETS	SHEET NO.
ci:\pw_work\pwidot\midyja\d0275511\DistStd.dgn		DRAWN - D.W.S.	REVISED - J.A.F. 12-06			55	2011-028-1	COOK & DUPAGE	6	6
PLOT SCALE = 50.0000' / in.		CHECKED -	REVISED - S.P.B. 01-07			<b>TC-17</b>		CONTRACT NO. 60P29		
PLOT DATE = 9/30/2011		DATE - 11-96	REVISED - S.P.B. 12-09			SCALE: NONE		SHEET NO. 1 OF 1 SHEETS		STA. TO STA.
						FED. ROAD DIST. NO. 1 ILLINOIS FED. AID PROJECT				