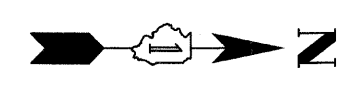
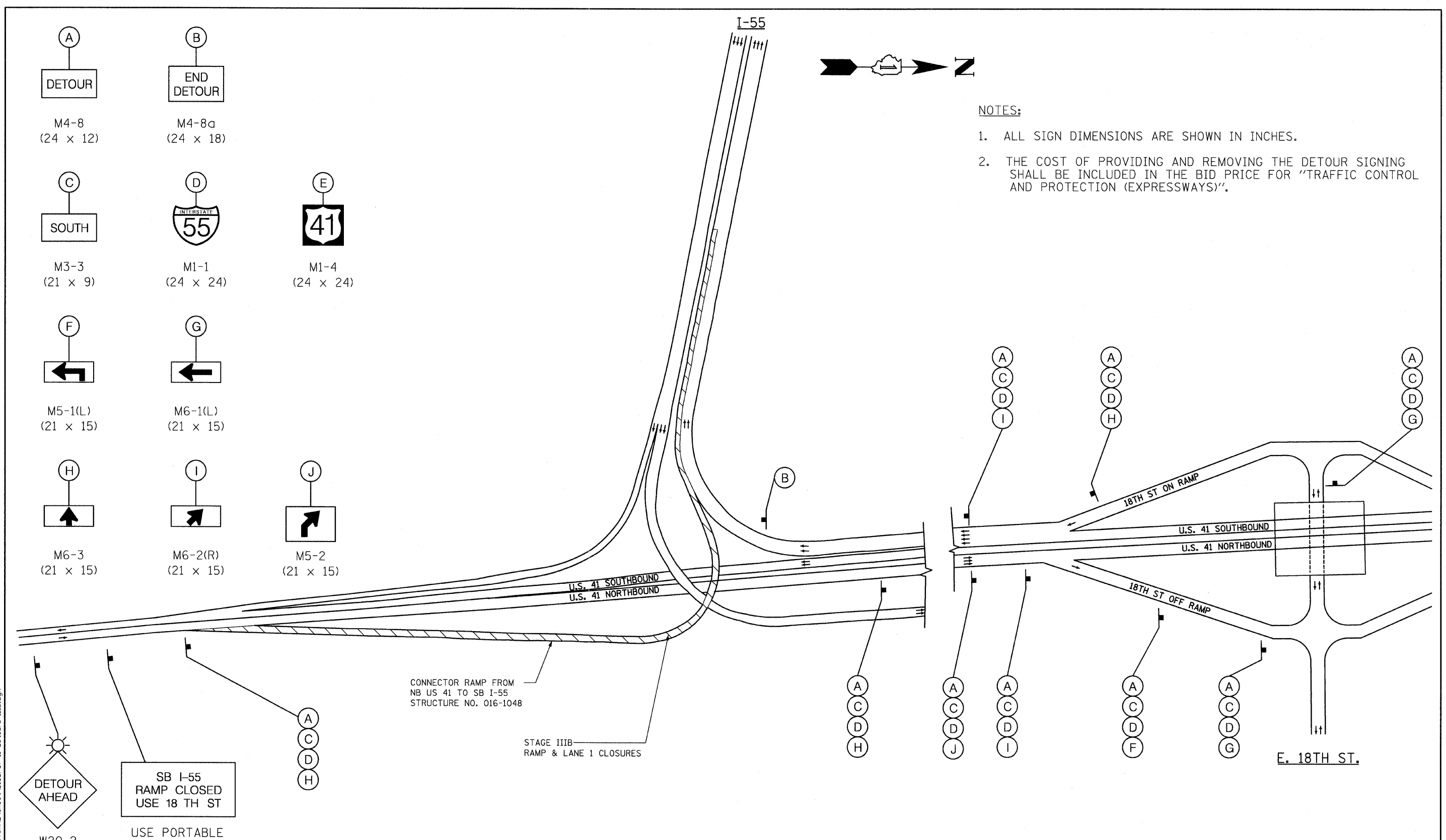


- (A) **DETOUR**
M4-8
(24 x 12)
- (B) **END DETOUR**
M4-8a
(24 x 18)
- (C) **SOUTH**
M3-3
(21 x 9)
- (D) **INTERSTATE 55**
M1-1
(24 x 24)
- (E) **41**
M1-4
(24 x 24)
- (F) **←**
M5-1(L)
(21 x 15)
- (G) **←**
M6-1(L)
(21 x 15)
- (H) **↑**
M6-3
(21 x 15)
- (I) **↗**
M6-2(R)
(21 x 15)
- (J) **↗**
M5-2
(21 x 15)



- NOTES:**
- ALL SIGN DIMENSIONS ARE SHOWN IN INCHES.
 - THE COST OF PROVIDING AND REMOVING THE DETOUR SIGNING SHALL BE INCLUDED IN THE BID PRICE FOR "TRAFFIC CONTROL AND PROTECTION (EXPRESSWAYS)".



FILE NAME = I:\102908.I-55\STRUCTURAL\sheet\DISBP37-11-detour-III.B.dgn

CHRISTIAN-ROGE & ASSOCIATES, INC.
 USER NAME = IDOT
 PLOT SCALE = 99.9999 1/ IN.
 PLOT DATE = 10/12/2011

DESIGNED - J.C.N./B.N.S.	REVISED -
CHECKED - B.N.S./J.C.N.	REVISED -
DRAWN - F.M.	REVISED -
DATE - OCTOBER 12, 2011	REVISED -

**STATE OF ILLINOIS
DEPARTMENT OF TRANSPORTATION**

**DETOUR PLAN - STAGE IIIB
F.A.I. RTE. I-55 OVER U.S. 41 / LAKE SHORE DRIVE**

SHEET NO. S11 OF S41 SHEETS

F.A.I. RTE. 55	SECTION 2011-031-BR	COUNTY COOK	TOTAL SHEETS 41	SHEET NO. 11
CONTRACT NO. 60P37				ILLINOIS FED. AID PROJECT

**DETOUR STAGE IIIB
N.B. U.S. 41 TO S.B. I-55**