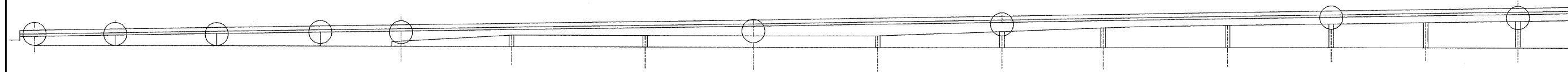
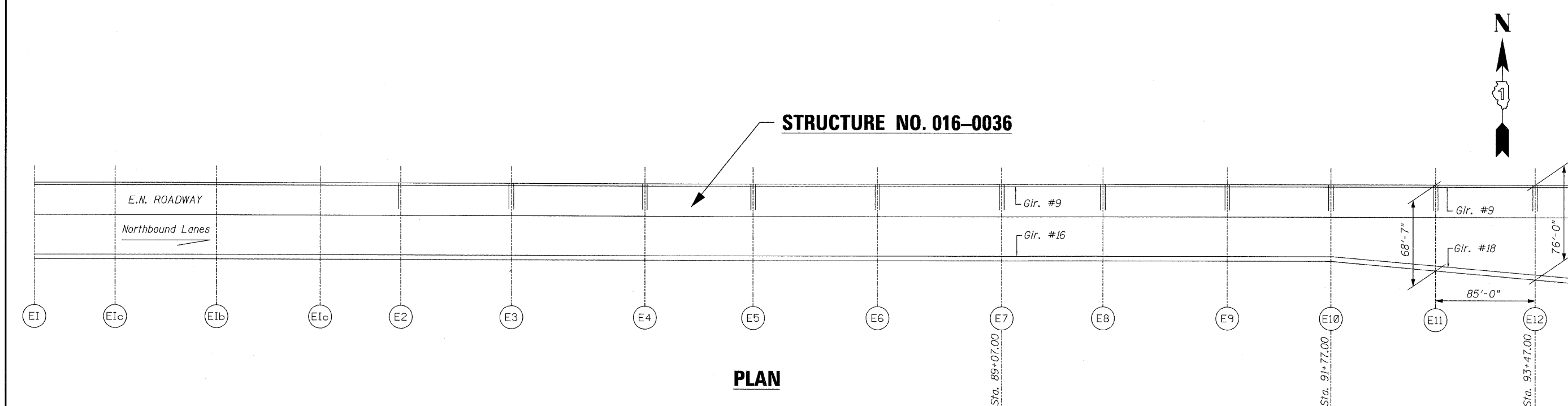


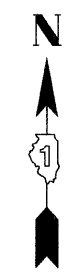
SN 016-1045 (N.B.)  
 SN 016-1052 (N.B.)  
 SN 016-0036 (N.B.)



**ELEVATION - E.N. ROADWAY**



**PLAN**



**PAVEMENT PATCHING NOTE:**

15 SY(±) PAVEMENT PATCHING IS REQUIRED IN LANE 2 WEST OF THE APPROACH PAVEMENT.

ESTIMATED QUANTITIES ARE AS FOLLOWS:

- 15 SY - CLASS A PATCHES, TYPE III 12 INCH.
- 15 SY - PATCHING REINFORCEMENT
- 68 FT - SAWCUTS
- 10 EACH - TIE BARS, 1"

**GENERAL PLAN & ELEVATION**  
**F.A.I. RTE. I-55 OVER**  
**U.S. 41/LAKE SHORE DRIVE**  
**COOK COUNTY**  
**STRUCTURE NO. 016-0036**

FILE NAME = I:\102908.I-55\STRUCTURAL\Drawings\016-0036\0160037-12-GPE.dgn

<b>CHRISTIAN-ROGE &amp; ASSOCIATES, INC.</b>	USER NAME == IDOT	DESIGNED - J.C.N./B.N.S.	REVISED -	<b>STATE OF ILLINOIS</b> <b>DEPARTMENT OF TRANSPORTATION</b>	SHEET NO. 512 OF 541 SHEETS	F.A.I. RTE. 55	SECTION 2011-031-BR	COUNTY COOK	TOTAL SHEETS 41	SHEET NO. 12
	PLOT SCALE = 50.0000' / IN.	CHECKED - B.N.S./J.C.N.	REVISED -			<b>CONTRACT NO. 60P37</b>				
	PLOT DATE == 10/12/2011	DRAWN - F.M.	REVISED -			ILLINOIS FED. AID PROJECT				
	DATE - OCTOBER 12, 2011	REVISED -								