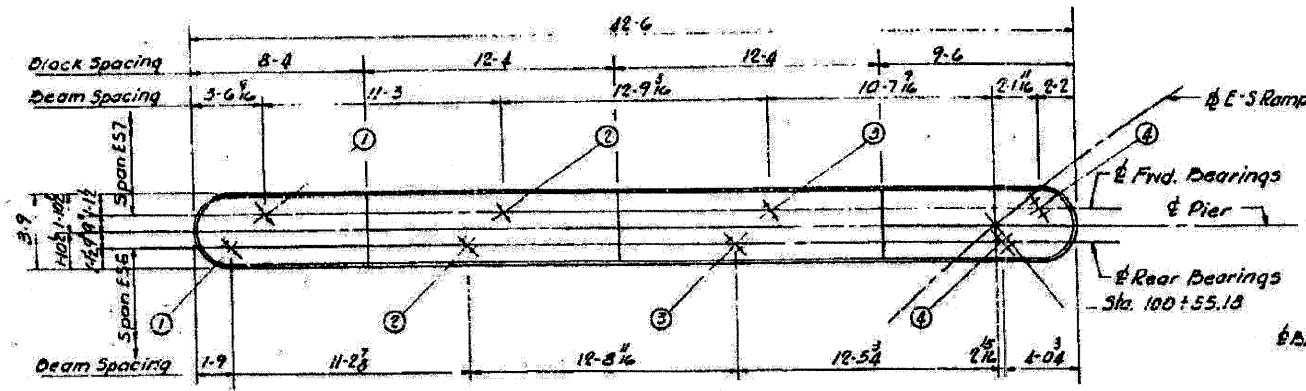
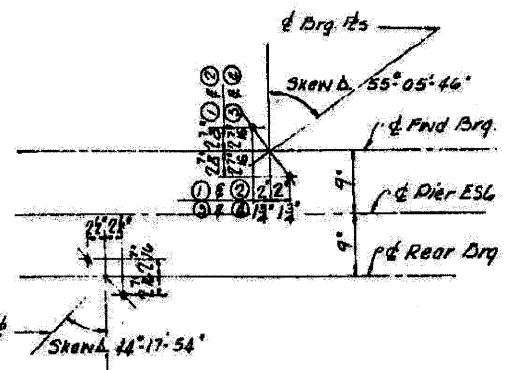


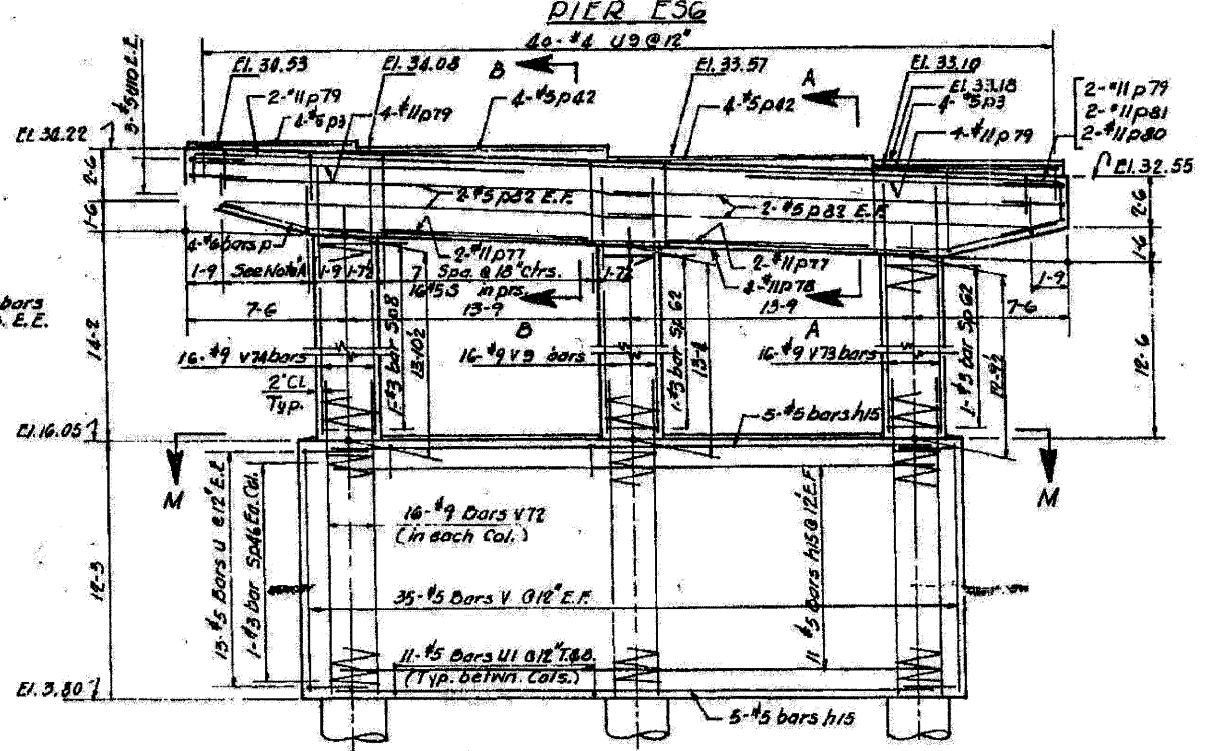
ROUTE NO.	SECTION	COUNTY	TOTAL SHEETS	SHEET NO.
F.A.I.-55	SW-1818.3-2H	COOK	99	48
FED. ROAD DIV. NO. 4	ILLINOIS	PROJECT I.G.-55-7(50)-289		



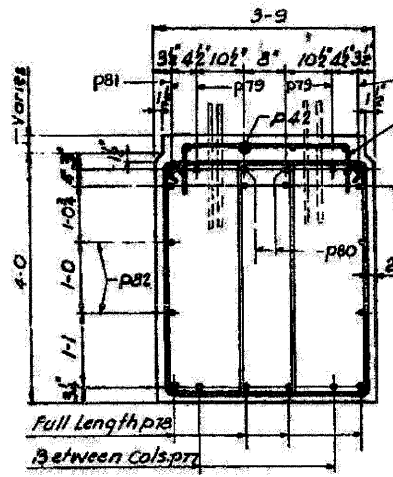
TOP PLAN
Scale 1/4"=1'-0"



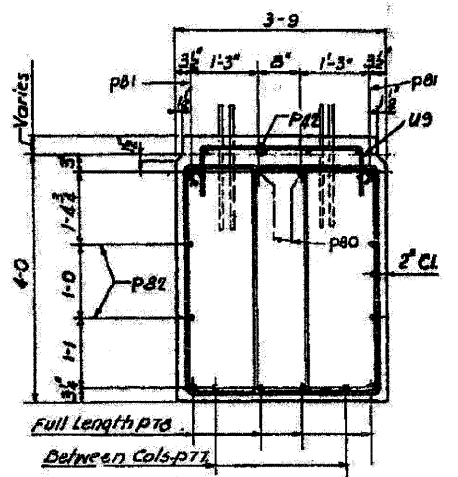
ANCHOR BOLT SETTING DIAGRAM
(Typ. Pier ES6 except as noted)



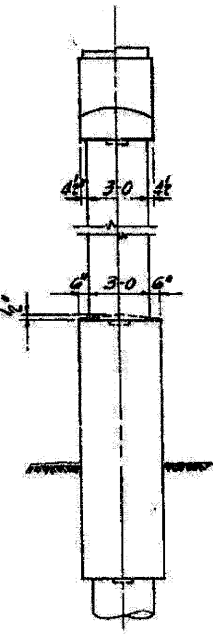
ELEVATION
Scale 1/4"=1'-0"



SECTION A-A
Scale 3/4"=1'-0"



SECTION B-B
Scale 1/4"=1'-0"



END VIEW
Scale 1/4"=1'-0"

Note A*
9 Sets of #5 bars
U 2 8 6" c/c. E.E.

Note
For additional Pier Sections & notes see
Sheet 530

FOR INFORMATION ONLY

BILL OF MATERIAL

DESCRIPTION	UNIT	QUANTITY
Class X Concrete	Cu.Yds.	921
Reinforcement Bars	Lbs.	18,250
Class A Excavation for Structures	Cu.Yds.	24

CITY OF CHICAGO
DEPARTMENT OF PUBLIC WORKS
BUREAU OF ENGINEERING
**SOUTHWEST ROUTE SUPERHIGHWAY
ELEVATED HIGHWAY**
S. LAKE PARK AVE TO S. LAKE SHORE DRIVE
SECTION SW-1818.3-2H
PIER ES6
SCALE: AS NOTED
SHEET NO. 5-27 OF 99 SHEETS
DEC. 1984

DESIGNED BY: A.I.A.
DRAWN BY: A.S.
CHECKED BY: A.I.A.
APPROVED BY: K.A.

USER NAME = IDDT	DESIGNED - J.C.N./B.N.S.	REVISED -
PLOT SCALE = 50.0000 / IN.	CHECKED - B.N.S./J.C.N.	REVISED -
PLOT DATE = 10/12/2011	DRAWN - F.M.	REVISED -
	DATE - OCTOBER 12, 2011	REVISED -

STATE OF ILLINOIS
DEPARTMENT OF TRANSPORTATION

PIER ES6
EXISTING PLANS
SHEET NO. S31 OF S41 SHEETS

F.A.I. RTE.	SECTION	COUNTY	TOTAL SHEETS	SHEET NO.
55	2011-031-BR	COOK	41	31
ILLINOIS FED. AID PROJECT				CONTRACT NO. 60P37

FILE NAME = I:\102908-1-55\STRUCTURAL\Sheet\Existing Plans\0166937-31-pier-ES6.dgn