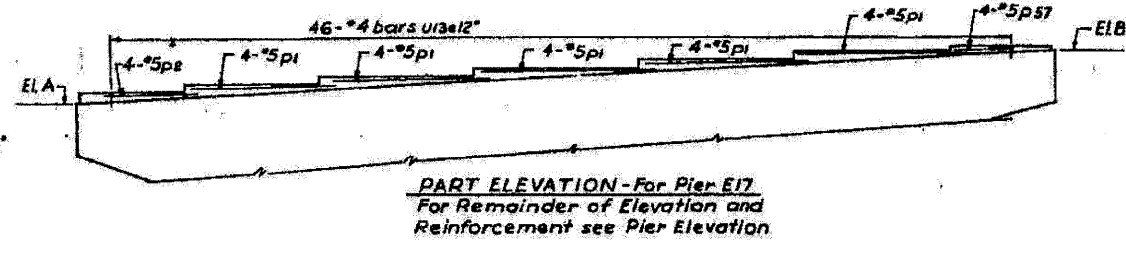
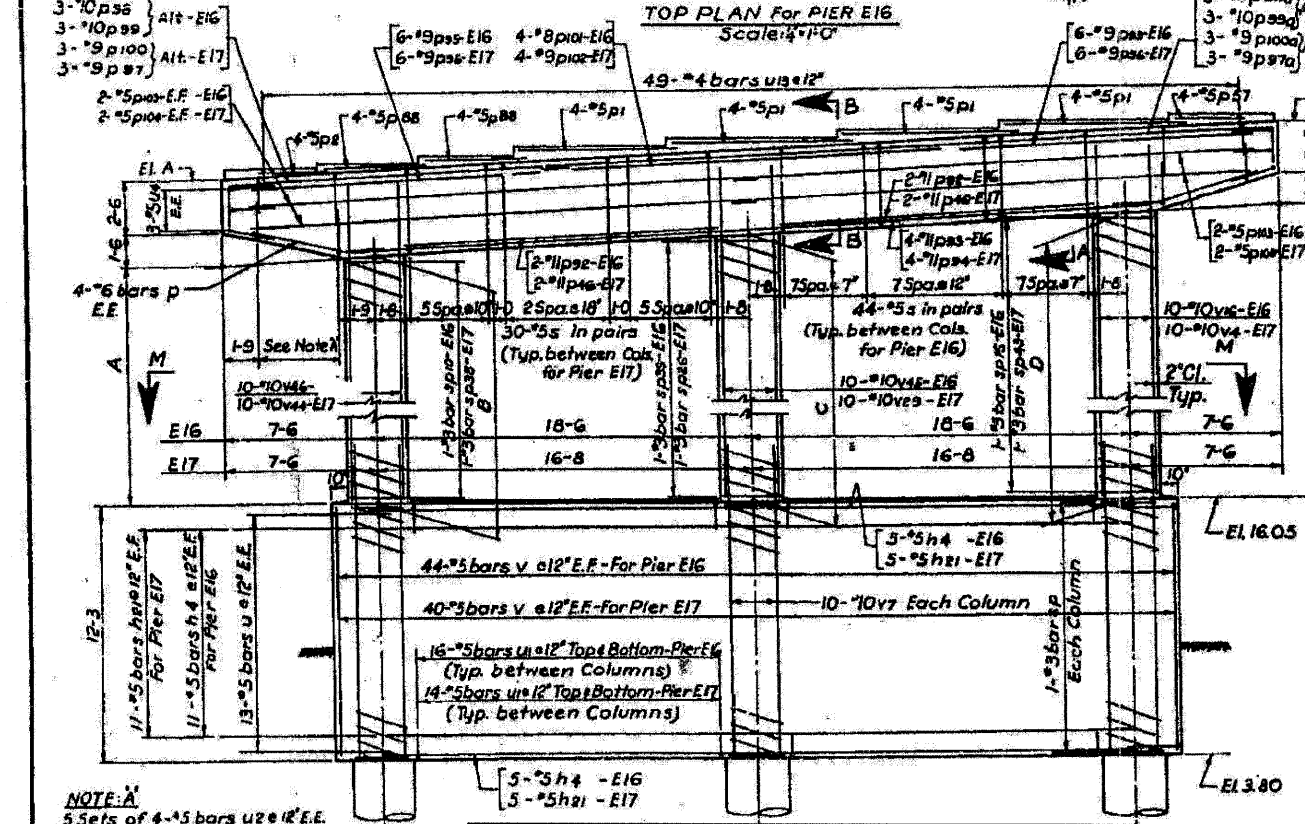
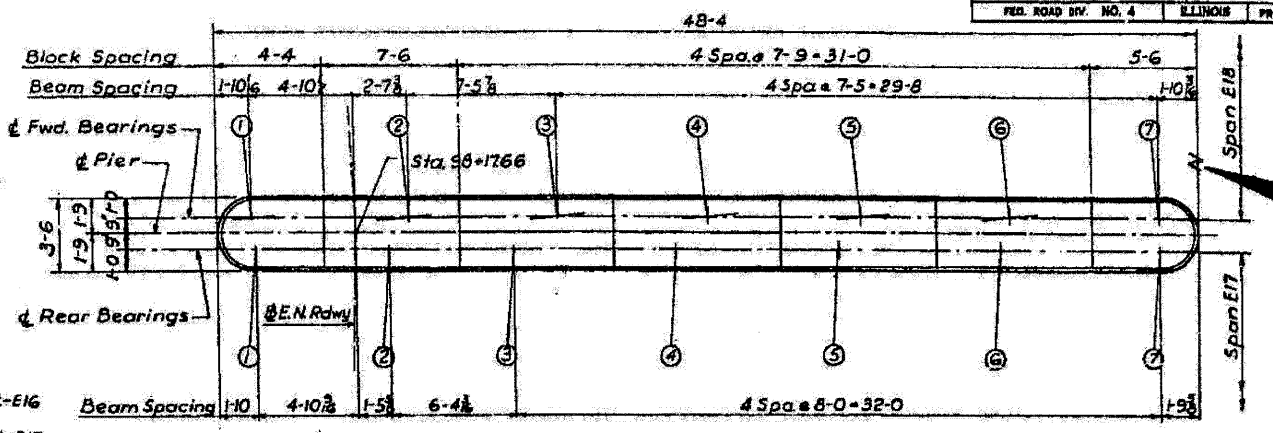
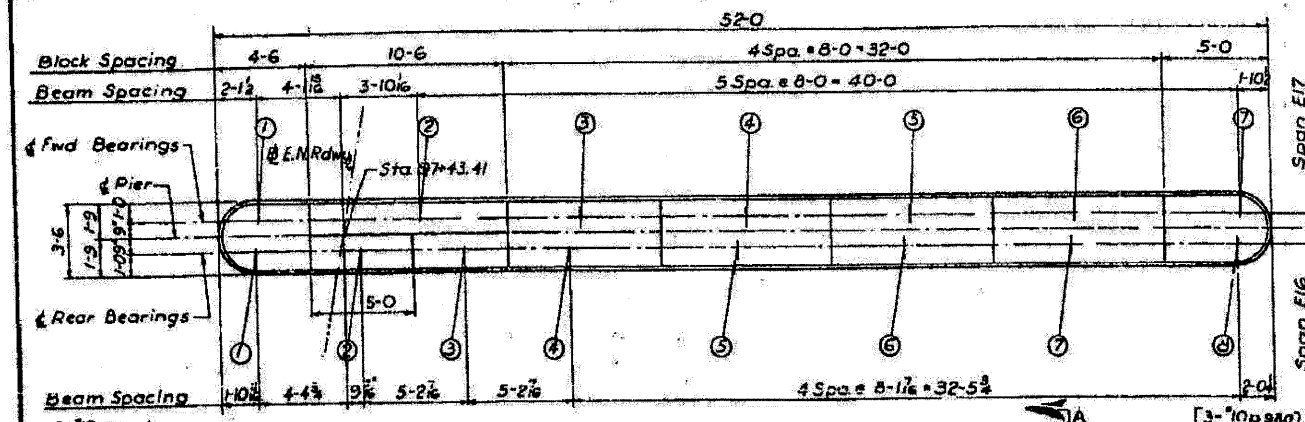
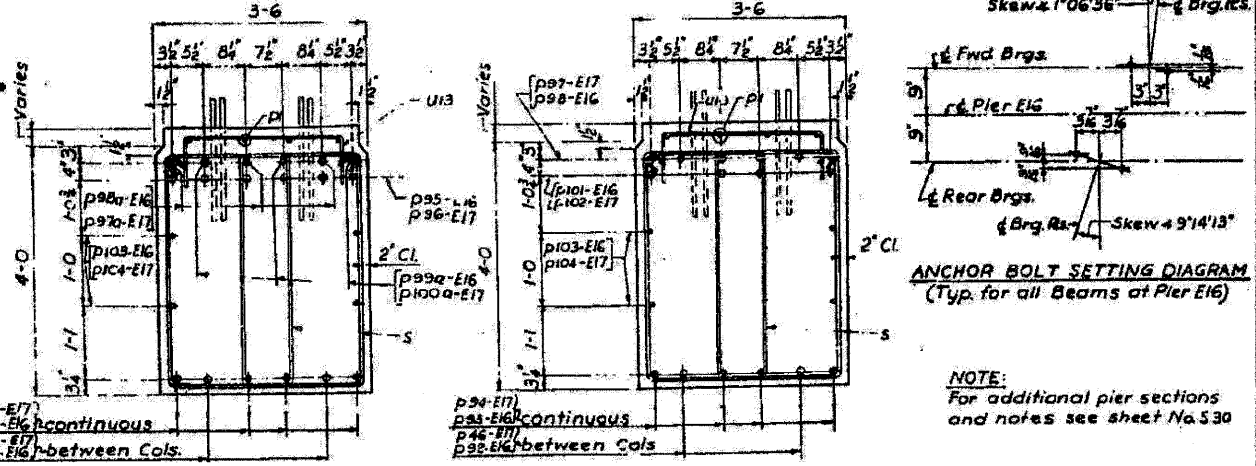
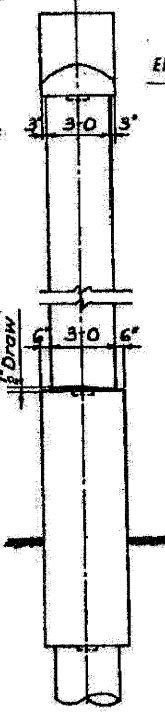


ROUTE NO.	SECTION	COUNTY	TOTAL SHEETS	SHEET NO.
F.A.1-85	SW-18183-2H	COOK	99	42
FED. ROAD DIV. NO. 4	ILLINOIS	PROJECT LG-03-7(80)-388		

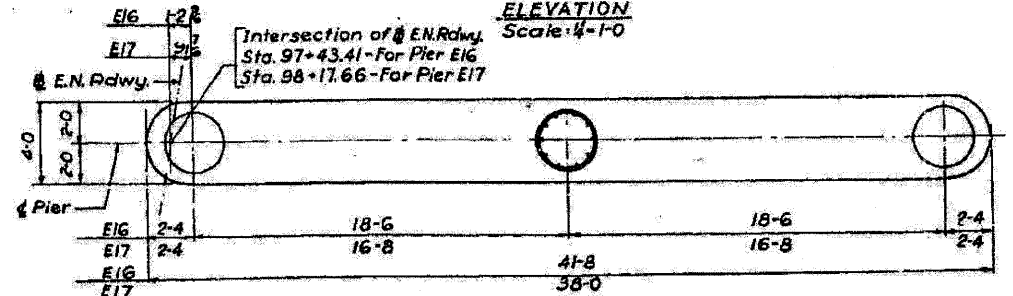


PIER	ELEVATIONS														DIMENSIONS							
	Top of Block Rear Bearings		Top of Block Forward Bearings												A	B	C	D	E			
	1	2	3	4	5	6	7	8	1	2	3	4	5	6	7							
E16	34.79	37.36	35.30	35.60	35.87	36.14	36.56	36.99	37.38	37.63	35.30	35.74	36.14	36.56	36.99	37.38	37.63	14-8 1/2	15-1 1/2	16-0 1/2	16-11 1/2	17-4
E17	34.82	36.84	34.74	35.15	35.52	35.98	36.47	36.89	37.14		34.74	35.19	35.65	36.08	36.47	36.89	37.14	14-3 1/4	14-8	15-6 1/2	16-5 1/4	16-10



NOTE: A  
5 Sets of 4 #5 bars u/e12 E.E.

FOR INFORMATION ONLY

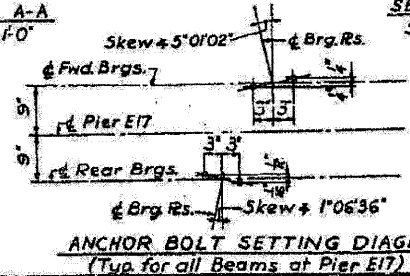


DESIGNED BY: AJP  
DRAWN BY: B.B. 3-11-63  
CHECKED BY: AM 4-M-62  
APPROVED BY: K.A.

PLAN M-M  
Scale: 1/4"=1'-0"

BILL OF MATERIAL

DESCRIPTION	UNIT	QUANTITY	
		Pier E16	Pier E17
Class 'X' Concrete	Cu Yds	115.5	106.2
Reinforcement Bars	Lbs.	13,470	12,270
Class A Excavation for Structures	Cu Yds	31	29



CITY OF CHICAGO  
DEPARTMENT OF PUBLIC WORKS  
BUREAU OF ENGINEERING  
SOUTHWEST ROUTE SUPERHIGHWAY  
ELEVATED HIGHWAY  
S. LAKE PARK AVE TO S. LAKE SHORE DRIVE  
SECTION SW-18183-2H  
PIERS E16 & E17  
SCALE: AS NOTED  
SHEET NO. S-21 OF 99 SHEETS  
DEC. 1964

FILE NAME = I:\102908.1-55\STRUCTURAL\Sheet\Existing Plans\160937-35-piers E16 & E17.dgn