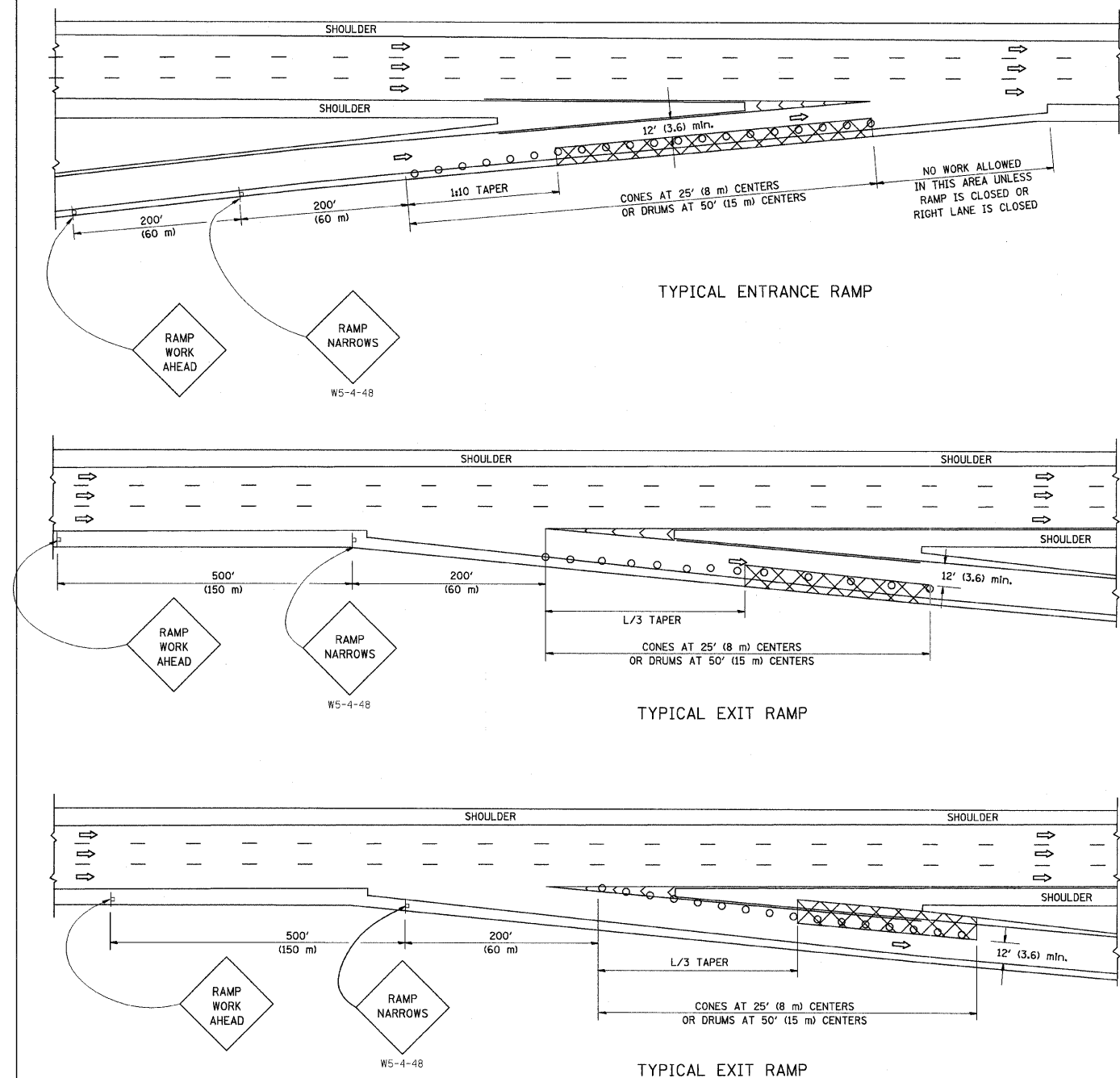


PARTIAL RAMP CLOSURE DETAILS



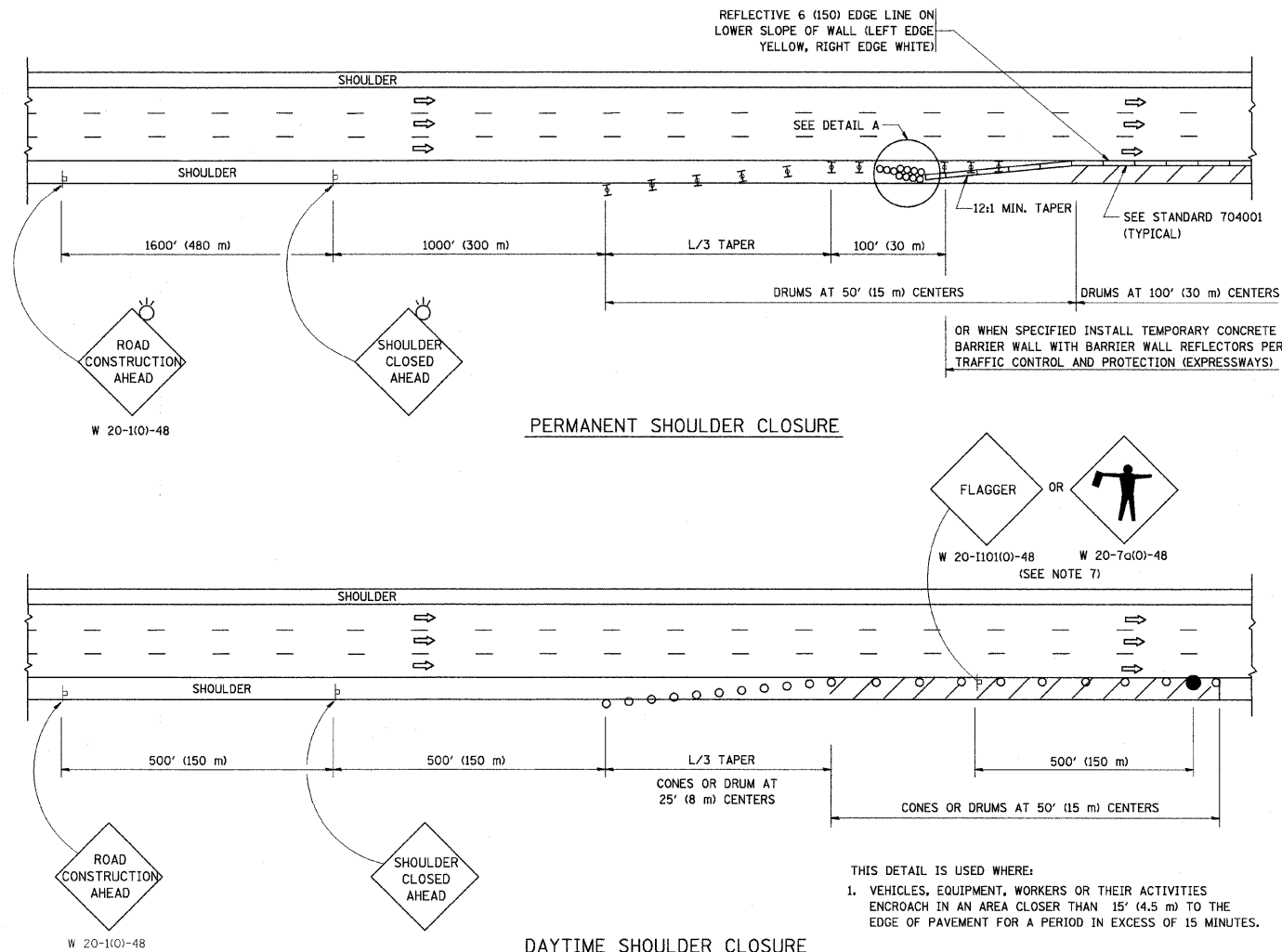
SYMBOLS

- ACTIVE WORK AREA
- SIGN ON PORTABLE OR PERMANENT SUPPORT
- FLAGGER WITH CONTROL SIGN
- TYPE II BARRICADE, DRUM OR VERTICAL BARRICADE WITH STEADY BURN MONO-DIRECTIONAL LIGHT
- CONE, DRUM OR BARRICADE

GENERAL NOTES

1. THE "L" DISTANCE EQUALS:  
SPEED LIMIT FORMULAS  
45 mph (80 km/h) METRIC ENGLISH  
OR GREATER: L=0.65(W)(S) L=(W)(S)  
W = WIDTH OF OFFSET IN FEET (METERS)  
S = NORMAL POSTED SPEED MPH (KM/H)
2. PLASTIC DRUMS WITH HIGH PERFORMANCE REFLECTIVE SHEETING AND STEADY BURNING LIGHTS ARE REQUIRED FOR ALL NIGHTTIME CLOSURES.
3. ALL SIGNS SHALL BE POST MOUNTED IF THE CLOSURE TIME EXCEEDS FOUR DAYS.
4. FLASHING LIGHTS SHALL BE USED DURING THE HOURS OF DARKNESS AND SHALL BE INSTALLED ABOVE THE FIRST TWO SETS OF SIGNS.

SHOULDER CLOSURE DETAILS



PERMANENT SHOULDER CLOSURE

DAYTIME SHOULDER CLOSURE

- THIS DETAIL IS USED WHERE:
1. VEHICLES, EQUIPMENT, WORKERS OR THEIR ACTIVITIES ENCROACH IN AN AREA CLOSER THAN 15' (4.5 m) TO THE EDGE OF PAVEMENT FOR A PERIOD IN EXCESS OF 15 MINUTES.

ARRAY DESIGN PER MANUFACTURER TO BE NCHRP 350 COMPLIANT.

DETAIL "A"  
IMPACT ATTENUATOR, TEMPORARY  
(SEE NOTE 5)

ALL DIMENSIONS ARE IN INCHES (MILLIMETERS) UNLESS OTHERWISE SHOWN.

FILE NAME = W:\distsd\22x34\17.dgn	USER NAME = loyoo	DESIGNED -	REVISED - 04-03	<b>STATE OF ILLINOIS DEPARTMENT OF TRANSPORTATION</b>	<b>TRAFFIC CONTROL DETAILS FOR FREEWAY SHOULDER CLOSURES AND PARTIAL RAMP CLOSURES</b>			F.A.I. R.T.E. 55	SECTION 2011-031-BR	COUNTY COOK	TOTAL SHEETS 41	SHEET NO. 38
PLOT SCALE = 50.0000' / IN.	DRAWN - D.W.S.	CHECKED -	REVISED - J.A.F. 12-06		SCALE: NONE SHEET NO. 1 OF 1 SHEETS STA. TO STA.			TC-17 CONTRACT NO. 60P37				
PLOT DATE = 1/26/2012	DATE - 11-96	CHECKED -	REVISED - S.P.B. 01-07		FED. ROAD DIST. NO. 1 [ILLINOIS] FED. AID PROJECT							
	DATE - 11-96	CHECKED -	REVISED - S.P.B. 12-09		FED. ROAD DIST. NO. 1 [ILLINOIS] FED. AID PROJECT							