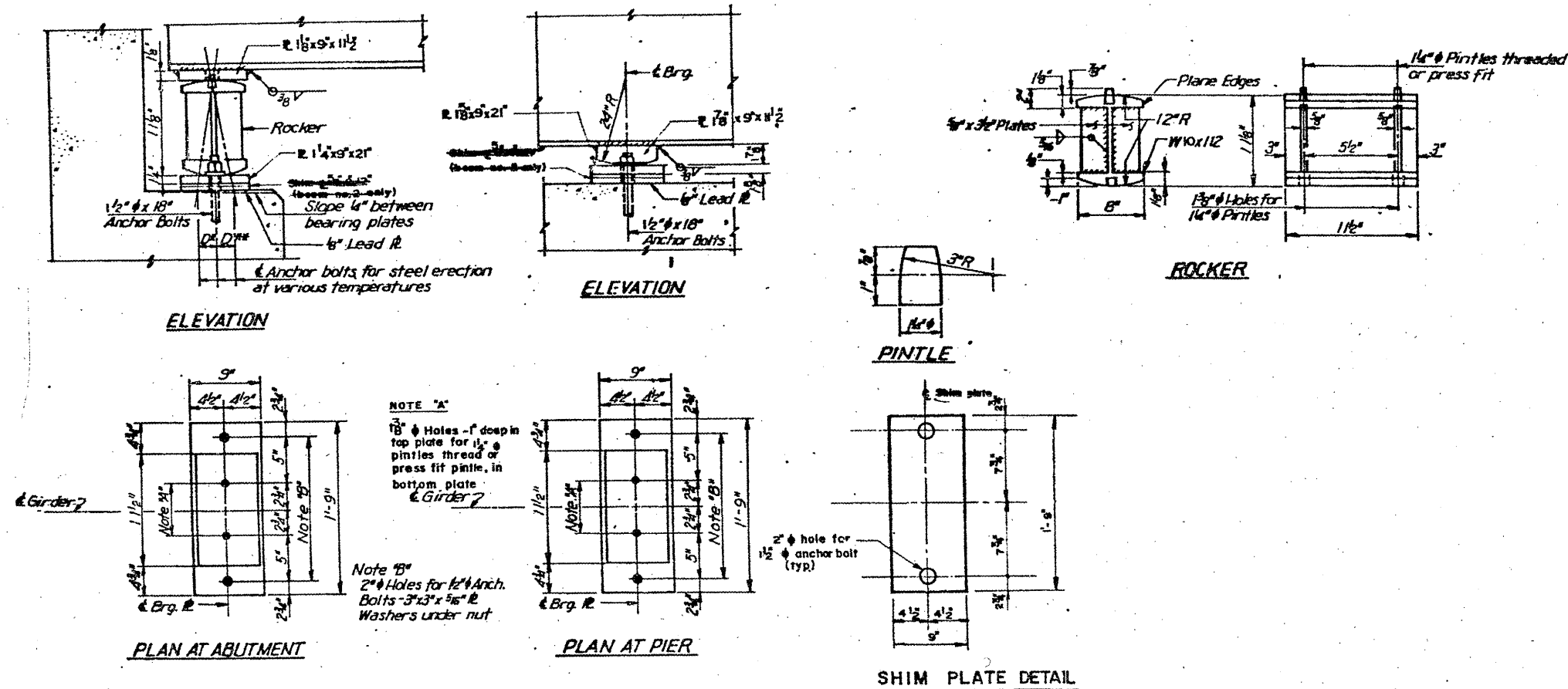


ROUTE	SECTION	COUNTY	TOTAL SHEETS	SHEET NUMBER
VARIOUS	2001-048-BP	COOK & LAKE	20	13

CONTRACT NO. 60P58



**BEARING
DETAILS**

FOR INFORMATION ONLY

**ILLINOIS DEPARTMENT OF
TRANSPORTATION**

EXISTING BRIDGE PLAN

LOCATION 2: SN 016-0928
 US 14 (Caldwell Ave) over N. Branch of Chicago River