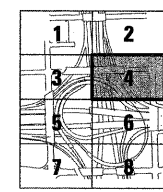
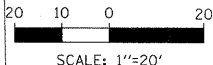
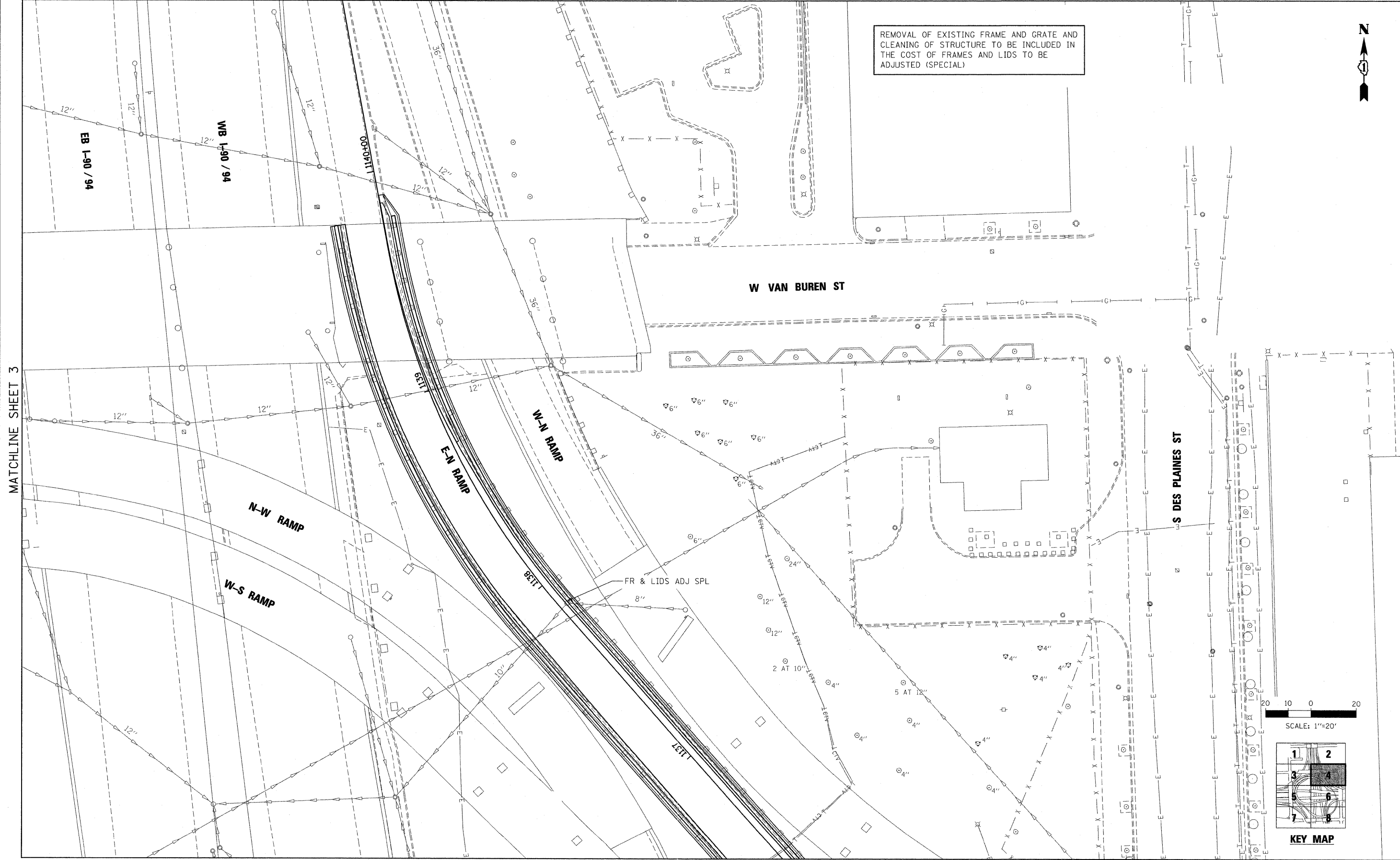
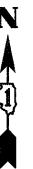


REMOVAL OF EXISTING FRAME AND GRATE AND CLEANING OF STRUCTURE TO BE INCLUDED IN THE COST OF FRAMES AND LIDS TO BE ADJUSTED (SPECIAL)



KEY MAP

FILE NAME = 37_D60P67-shd-drain04.dgn

USER NAME = USER:3690	DESIGNED - DLD	REVISED -
PLOT SCALE = 1:20	DRAWN - ED	REVISED -
PLOT DATE = 9/8/2011	CHECKED - AAC	REVISED -
	DATE - 08/04/11	REVISED -

STATE OF ILLINOIS
DEPARTMENT OF TRANSPORTATION

PROPOSED DRAINAGE AND UTILITY PLAN

SCALE: 1"=20' SHEET NO. 4 OF 8 SHEETS STA. TO STA.

F.A.I. RTE. 90/94 290	SECTION 2011-055-I	COUNTY COOK	TOTAL SHEETS 107	SHEET NO. 38
				CONTRACT NO. 60P67
ILLINOIS FED. AID PROJECT				