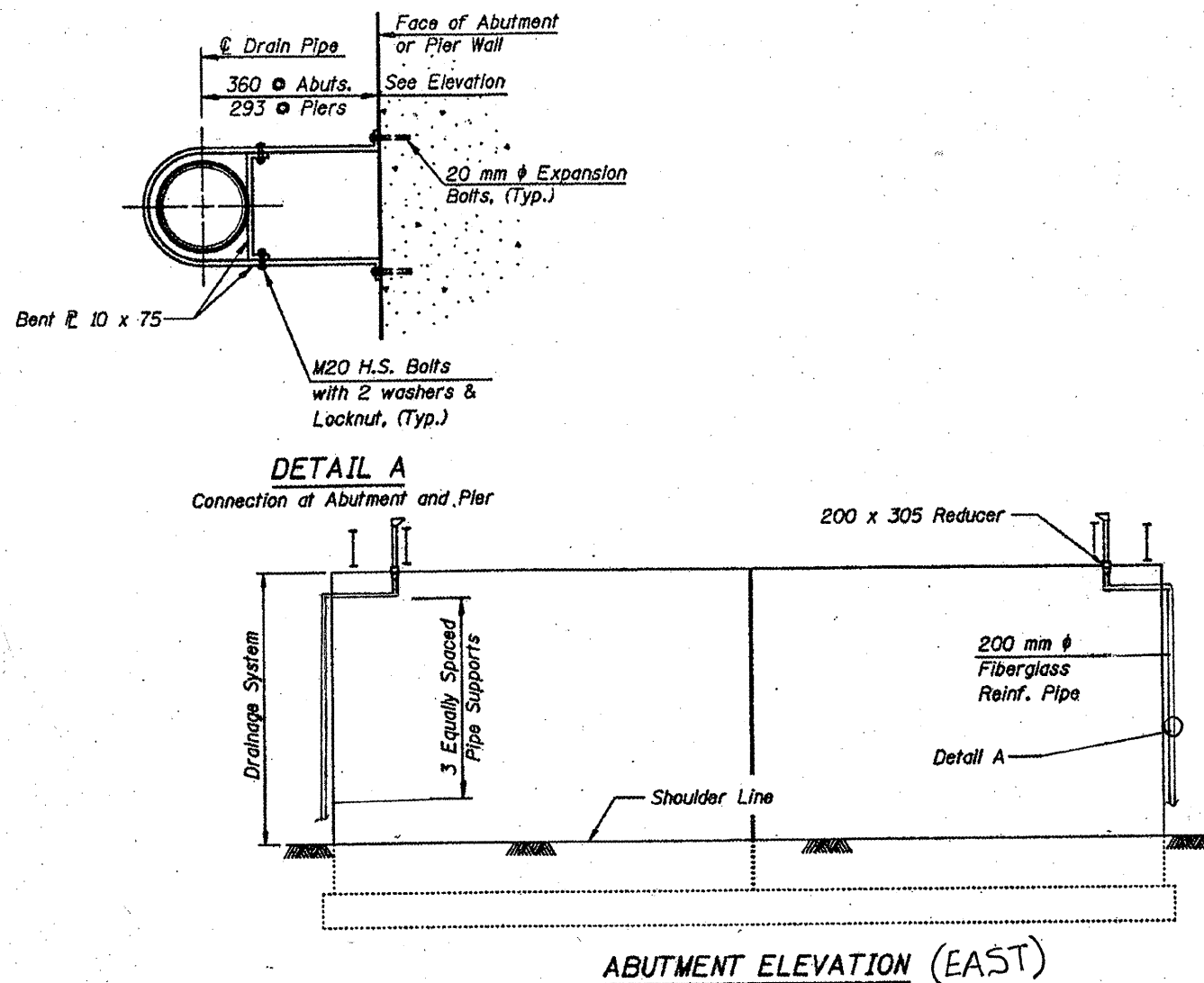


ROUTE	SECTION	COUNTY	TOTAL SHEETS	SHEET NUMBER
VARIOUS	2011-060-BR	COOK	49	22



TOTAL BILL OF MATERIALS

ITEM	UNIT	QUANTITY
BRIDGE DRAINAGE SYSTEM REPAIRS	FOOT	15

NOTE:

BRIDGE DRAINAGE SYSTEM REPAIRS NORTH AND SOUTH END OF EAST ABUTMENT. (REPLACE SECTIONS WHICH GO AROUND ABUTMENT CORNERS.)

ILLINOIS DEPARTMENT OF
TRANSPORTATION
STRUCTURAL REPAIRS
ABUTMENT & PIER ELEVATION
SN: 016-1144
SHEET 2 OF 2