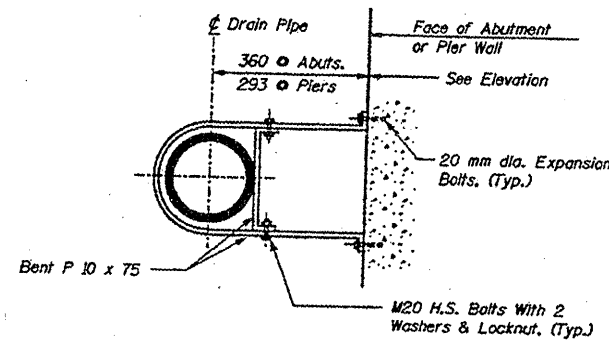
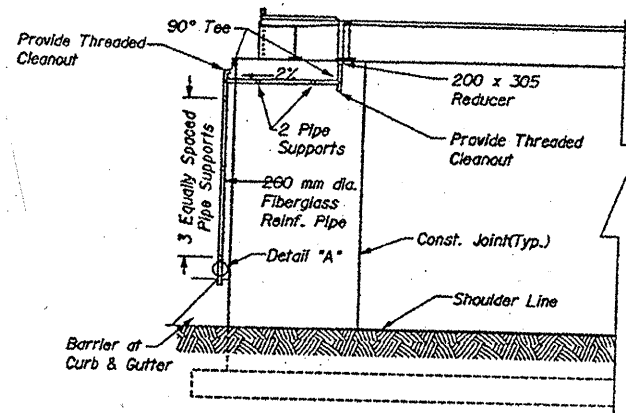


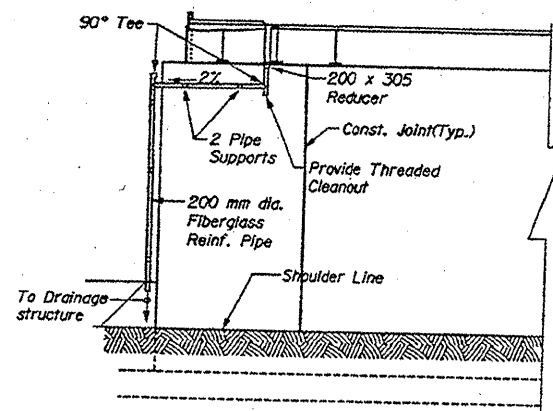
ROUTE VARIOUS	SECTION 2011-060-BR	COUNTY COOK	TOTAL SHEETS 49	SHEET NUMBER 30
-------------------------	-------------------------------	-----------------------	---------------------------	---------------------------



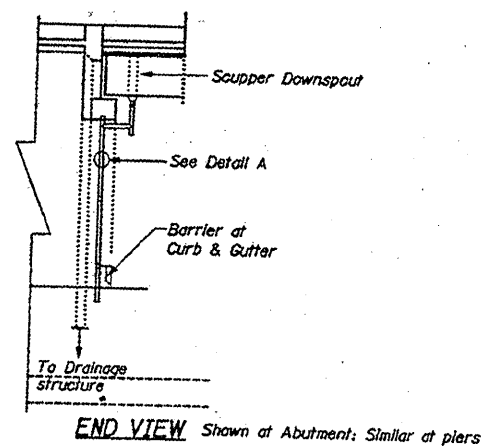
DETAIL A
CONNECTION AT ABUTMENT AND PIER



PARTIAL ABUTMENT ELEVATION
North portion of Abutment shown
South portion similar
(Typical for East & West Abut.)



PARTIAL PIER ELEVATION
North portion of Pier shown
South portion similar
(Typical for all piers)



TOTAL BILL OF MATERIALS

ITEM	UNIT	QUANTITY
BRIDGE DRAINAGE SYSTEM REPAIRS	FOOT	15

NOTE:

BRIDGE DRAINAGE SYSTEM REPAIRS AT N.E. END OF EAST ABUTMENT AND SOUTH END OF PIER 2 AND PIER 3

ILLINOIS DEPARTMENT OF
TRANSPORTATION
STRUCTURAL REPAIRS
PIER & ABUTMENT ELEVATIONS
SN: 016-1156
SHEET 2 OF 2