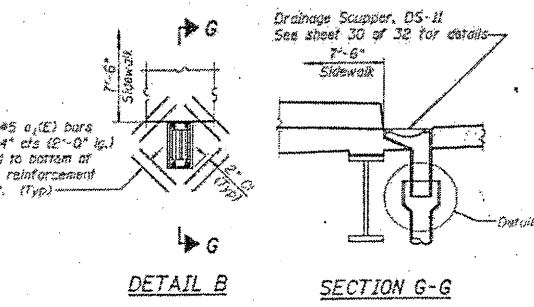
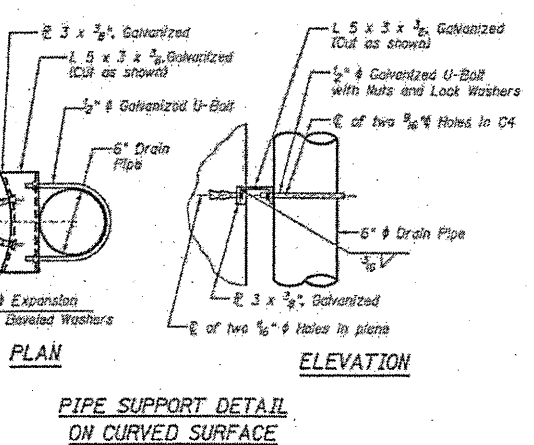
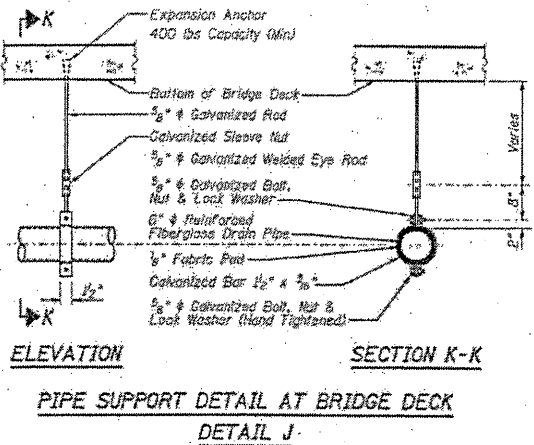
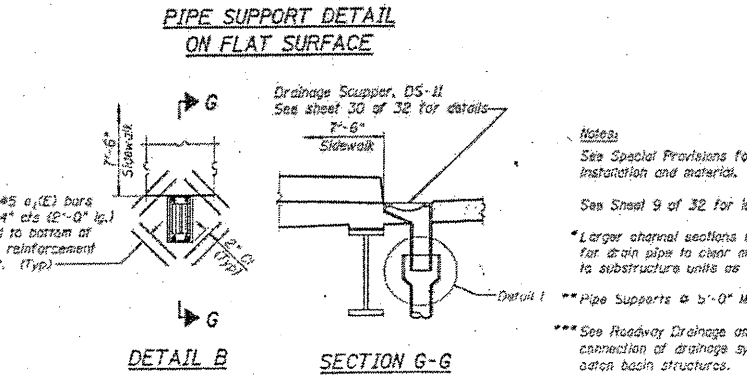
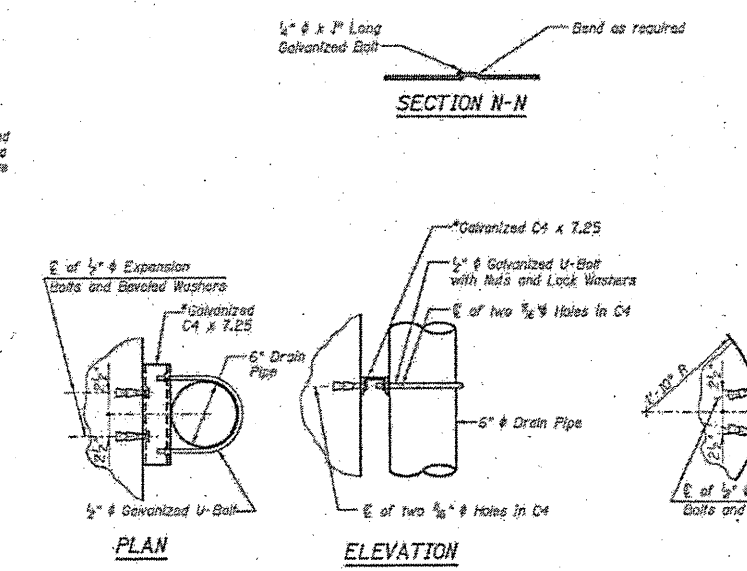
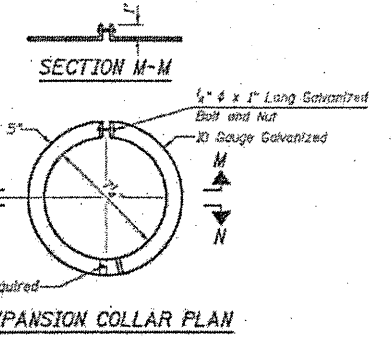
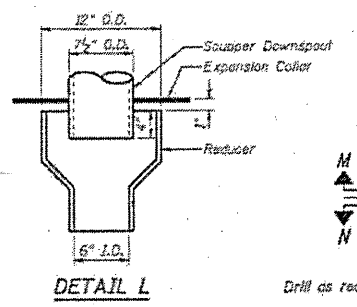
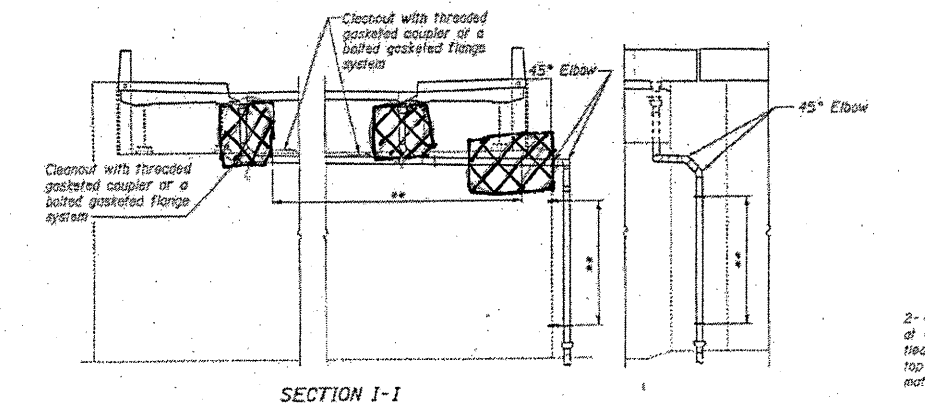
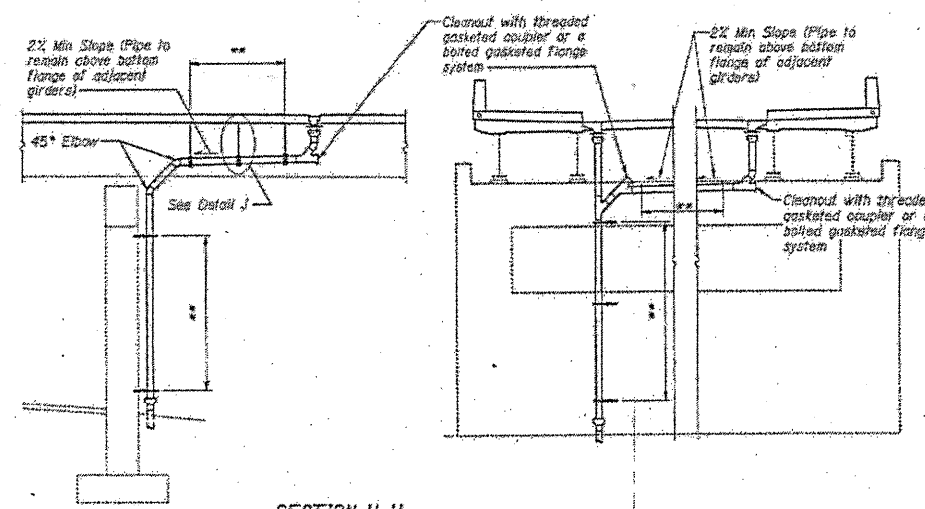
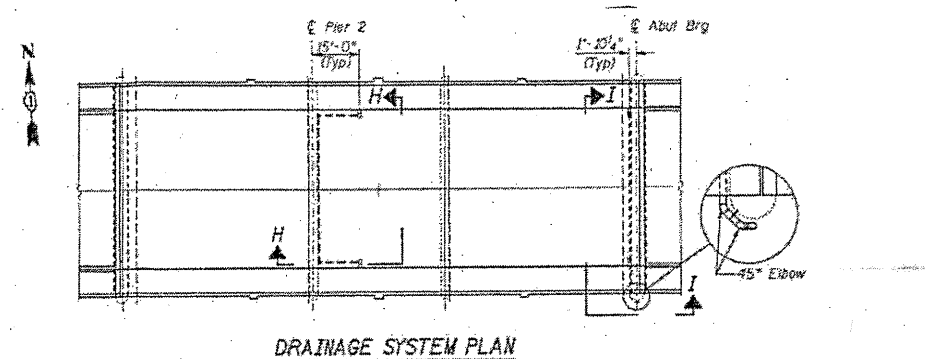


ROUTE VARIOUS	SECTION 2011-060-BR	COUNTY COOK	TOTAL SHEETS 49	SHEET NUMBER 36
------------------	------------------------	----------------	--------------------	--------------------

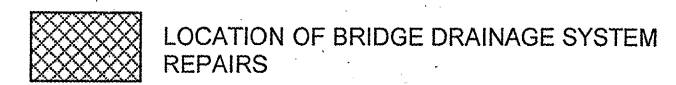


**Notes:**  
 See Special Provisions for Drainage System Installation and material.  
 See Sheet 9 of 32 for locations of Detail B.  
 \* Larger channel sections may be used if required for drain pipe to clear miscellaneous attachments to substructure units as approved by the engineer.  
 \*\* Pipe Supports @ 5'-0" Max Spacing.  
 \*\*\* See Roadway Drainage and Utilities Sheets for connection of drainage system to existing I-57 catch basin structures.

**TOTAL BILL OF MATERIALS**

ITEM	UNIT	QUANTITY
BRIDGE DRAINAGE SYSTEM REPAIRS	FOOT	16

**NOTE:**  
 BRIDGE DRAINAGE SYSTEM REPAIRS NORTH AND SOUTH END OF EAST ABUTMENT (REPLACE MISSING SECTIONS)



**ILLINOIS DEPARTMENT OF TRANSPORTATION  
 STRUCTURAL REPAIRS  
 DRAINAGE SECTIONS  
 SN: 016-2127  
 SHEET 2 OF 2**