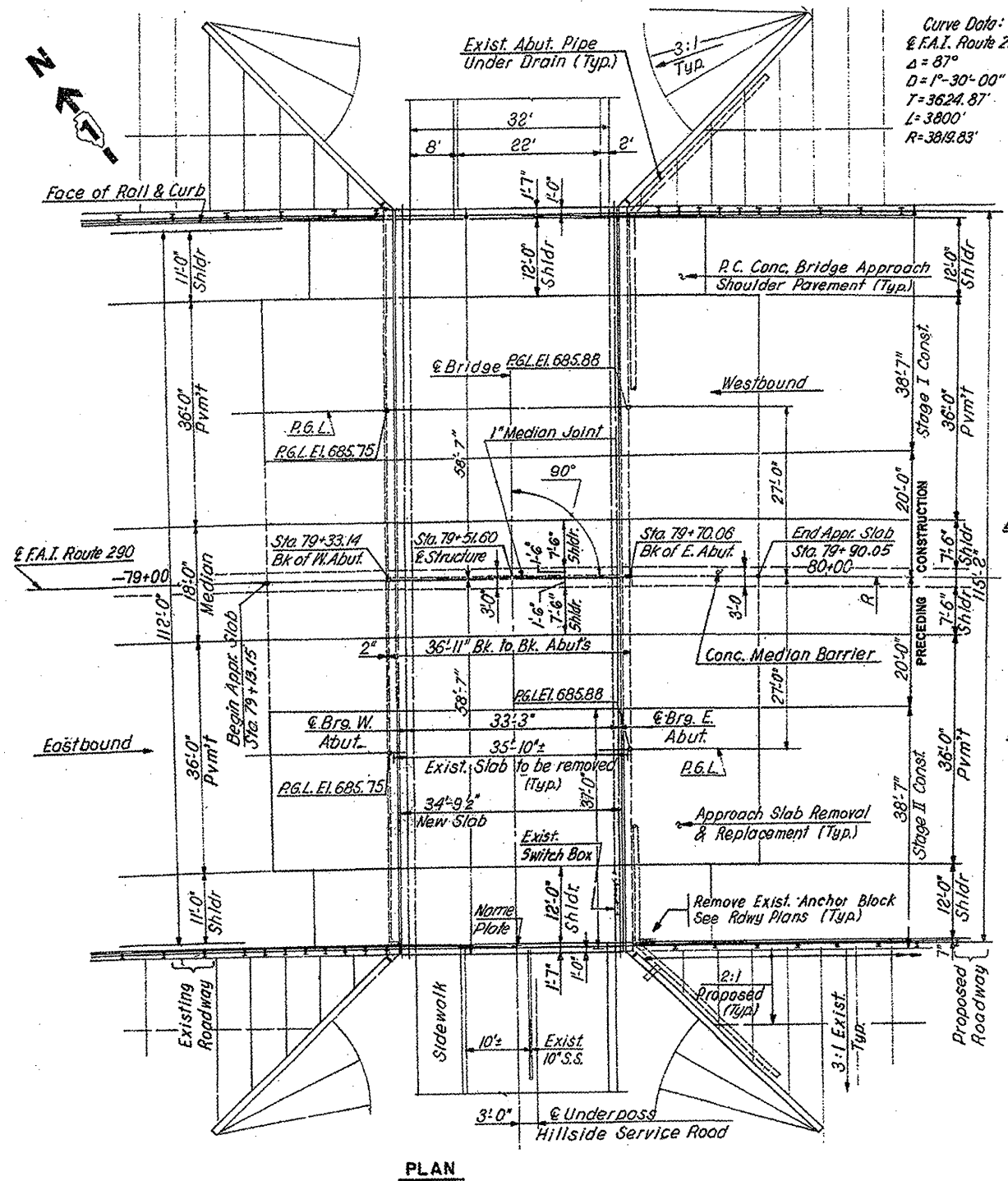


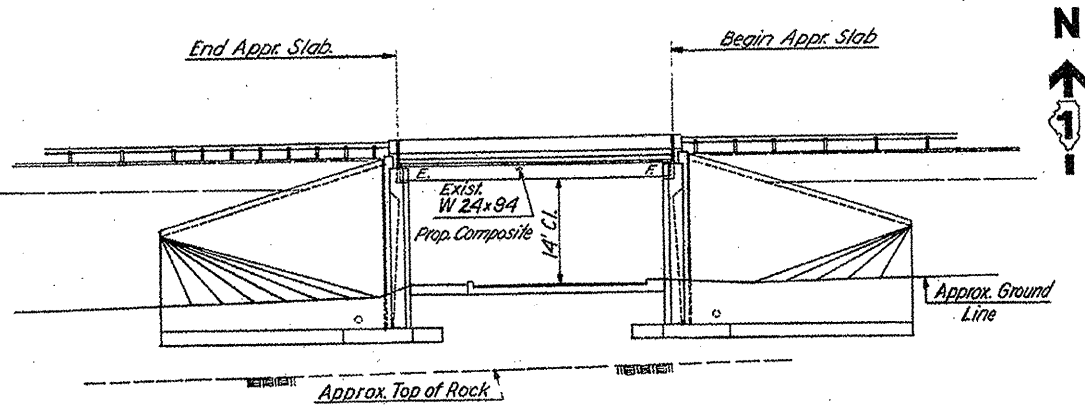
ROUTE	SECTION	COUNTY	TOTAL SHEETS	SHEET NUMBER
FAI 290	2011-061-BR	COOK & DUPAGE	29	22

Contract 60P79



Curve Data:  
 @ F.A.I. Route 290  
 $\Delta = 87^\circ$   
 $D = 1^\circ 30' 00''$   
 $T = 3624.87'$   
 $L = 3800'$   
 $R = 3819.83'$

Existing Structure:  
 Single Span WF Beam Bridge, with Closed  
 Abutment's - Cantilever Type on Spread Footing  
 114'-0" Wide by 36'-11" Long Built as F.A. Route  
 131, Section 062-3737.2 M.F.T. Sta. 79+51.60 in 1955



**DESIGN LOADING:**  
 HS 20-44, Alternate and  
 25 psf allowance for Future  
 Wearing Surface.  
**DESIGN STRESSES (New Construction)**  
 $f_s = 20,000$  p.s.i. M183 Struct. Steel  
 $f_s = 24,000$  p.s.i. Reinforcement Steel  
**Deck Slab:**  
 $f_y = 60,000$  p.s.i. (Load Factor  
 $f_c = 3,500$  p.s.i. Design)  
**DESIGN STRESSES (Exist. Construction)**  
 $f_s = 18,000$  p.s.i. A7 Structural Steel.  
**DESIGN SPECIFICATIONS**  
 AASHTO 1977 and Interim  
 Specifications 1978 thru 1983

ELEVATION

FOR INFORMATION ONLY

SHEET 1 OF 3

ILLINOIS DEPARTMENT OF  
 TRANSPORTATION  
 SN 016-0986  
 LOCATION NO. 3  
 INTERSTATE ROUTE 290 OVER HILLSIDE ROAD  
 GENERAL PLAN AND ELEVATION