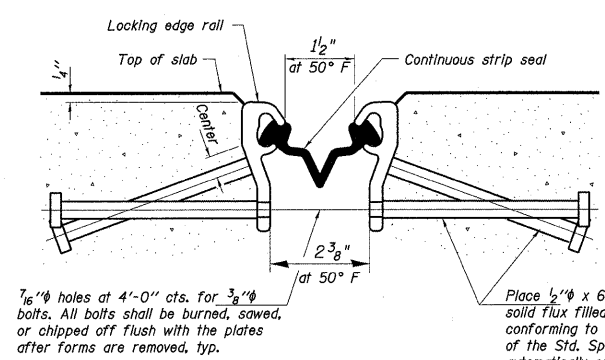


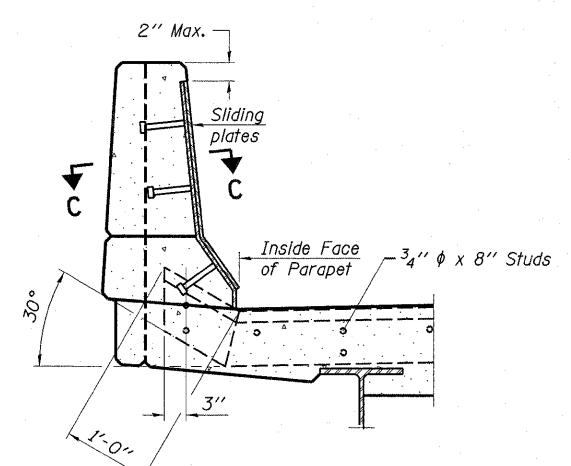
*** FOR END TREATMENT DETAILS REFER TO SHEET 5 AND 6



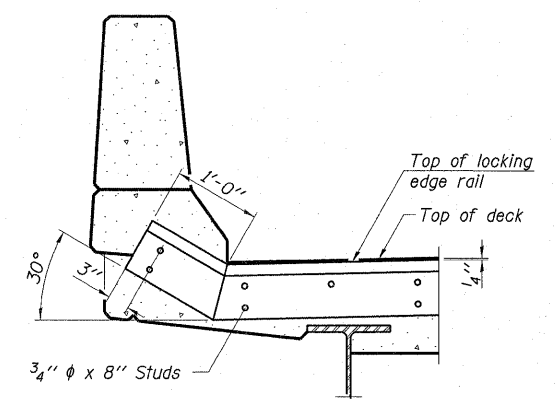
SECTION THRU STRIP SEAL JOINT FOR OVERLAY OVER DECK BEAMS

7/16" holes at 4'-0" cts. for 3/8" bolts. All bolts shall be burned, sawed, or chipped off flush with the plates after forms are removed, typ.

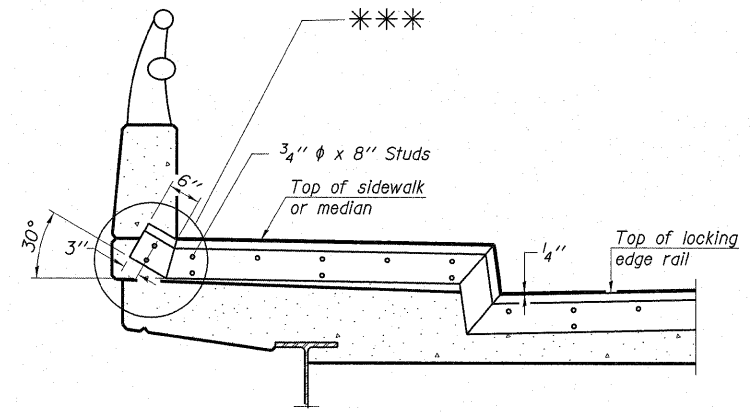
Place 1/2" x 6" granular or solid flux filled headed studs conforming to Article 1006.32 of the Std. Specs., automatically end welded at 1'-0" air. cts.



SECTION B-B POINT BLOCK DETAILS

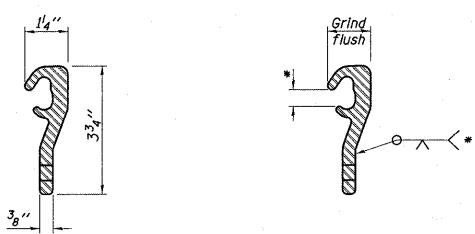


SECTION A-A



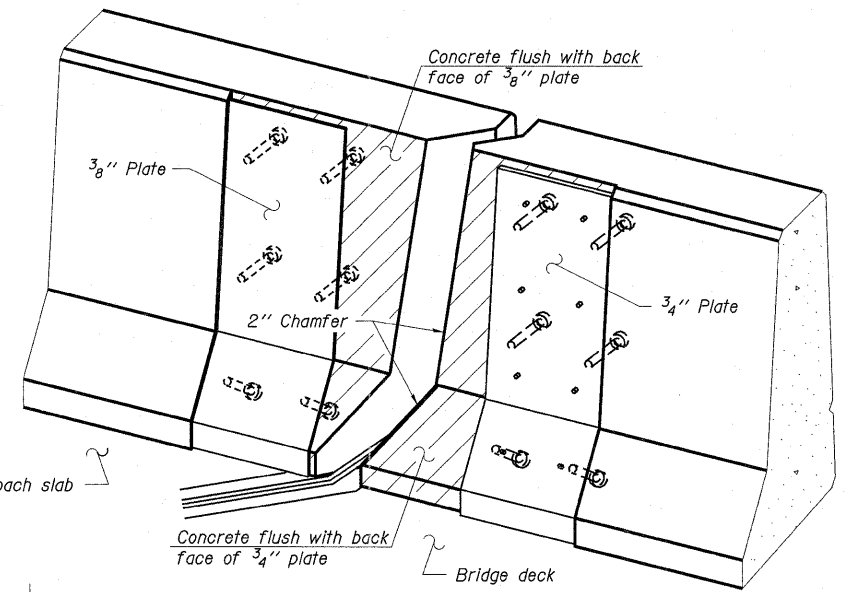
TYPICAL END TREATMENT AT SIDEWALK OR MEDIAN

Shorter plates with a single row of studs at 12" cts. may be necessary on medians which are shallower than 9". See manufacturer's recommendation.

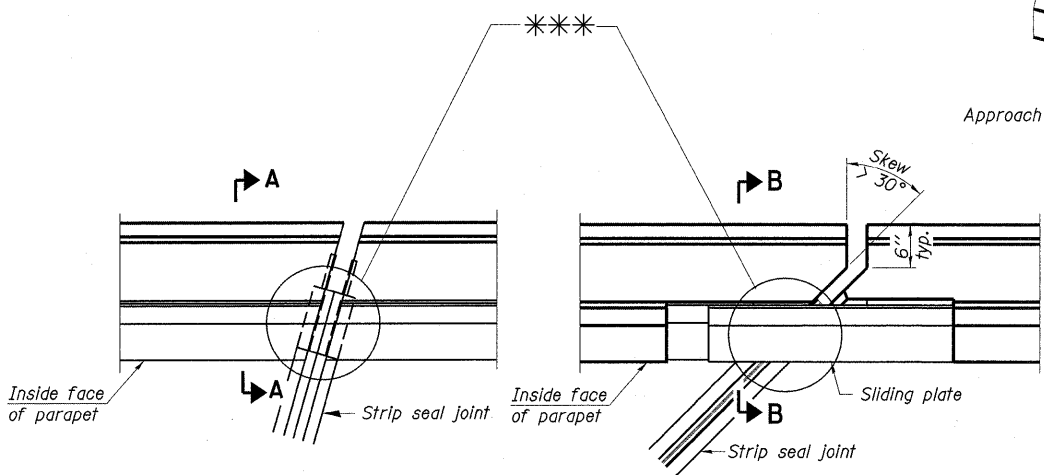


LOCKING EDGE RAIL LOCKING EDGE RAIL SPLICE

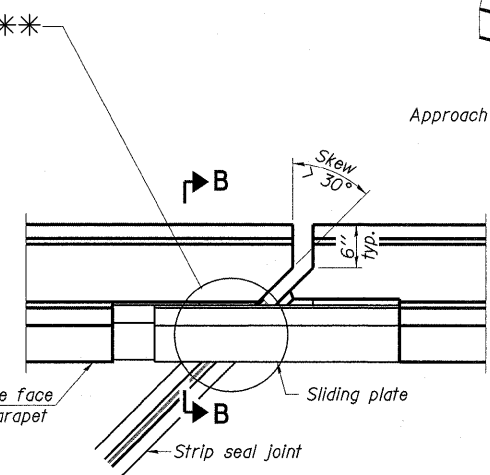
* Omit weld at seal opening.



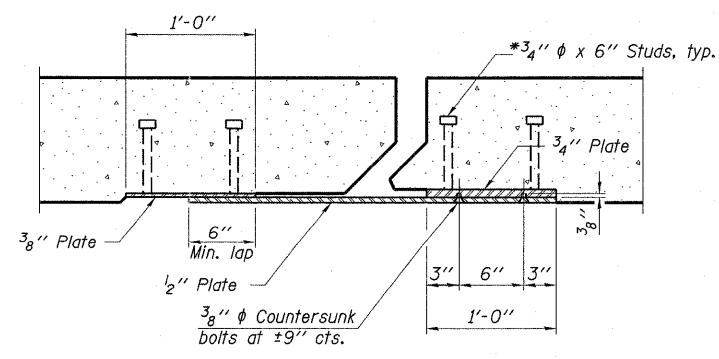
TRIMETRIC VIEW (Showing back plates only)



PLAN (For Skew > 30°) Showing paint Block



PLAN (For Skew > 30°) Showing paint Block



SECTION C-C

TYPICAL END TREATMENTS

Notes:

- The strip seal shall be made continuous and shall have a minimum thickness of 1/4". The configuration of the strip seal shall match the configuration of the Locking Edge Rails.
- The height and thickness of the Locking Edge Rails shown are minimum dimensions. The actual configuration of the Locking Edge Rails and matching strip seal may vary from manufacturer to manufacturer. Flanged edge rails will not be allowed.
- The inside of the Locking Edge Rail groove shall be free of weld residue. Locking Edge Rails may be spliced at slope discontinuities and stage construction joints.
- The manufacturer's recommended installation methods shall be followed.
- The joint opening and deck dimensions detailed on the superstructure are based on a rolled rail expansion joint. If the Contractor elects to use the welded rail expansion joint, the opening and deck dimensions shall be modified according to the dimensions detailed on this sheet. Required modifications shall be made at no additional cost to the State.
- All steel components shall be galvanized after fabrication according to Article 520.03 of the Standard Specifications.
- Maximum space between rail segments at stage lines shall be 3/16", sealed with a suitable sealant.
- Parapet plates and anchorage studs for skews > 30° included in the cost of Preformed Joint Strip Seal.
- The Inside of the Locking Edge Rail groove shall be free of weld residue.

BILL OF MATERIAL

Item	Unit	Total
Preformed Joint Strip Seal	Foot	199

PREFORMED JOINT STRIP SEAL STRUCTURE NO. 016-2554

EJ-SSJ 11-1-09

FILE NAME =	USER NAME = gorengautab	DESIGNED - MT	REVISED -	STATE OF ILLINOIS DEPARTMENT OF TRANSPORTATION	111TH STREET OVER STONEY CREEK PREFORMED JOINT STRIP SEAL S.N. 016-2554	F.A.J. RTE.	SECTION	COUNTY	TOTAL SHEETS	SHEET NO.	
at:\pw_work\p\dot\gorengautab\d0101671\016-2554.dgn	PLOT SCALE = 50.0000' / in.	DRAWN - MT	REVISED -			1581	1355-B-1	COOK	23	11	
	PLOT DATE = 10/8/2011	CHECKED - RB	REVISED -			SCALE: SHEET NO. 8 OF 8 SHEETS STA. TO STA. ILLINOIS FED. AID PROJECT					
		DATE - 9-26-2011	REVISED -			CONTRACT NO. 60P80					