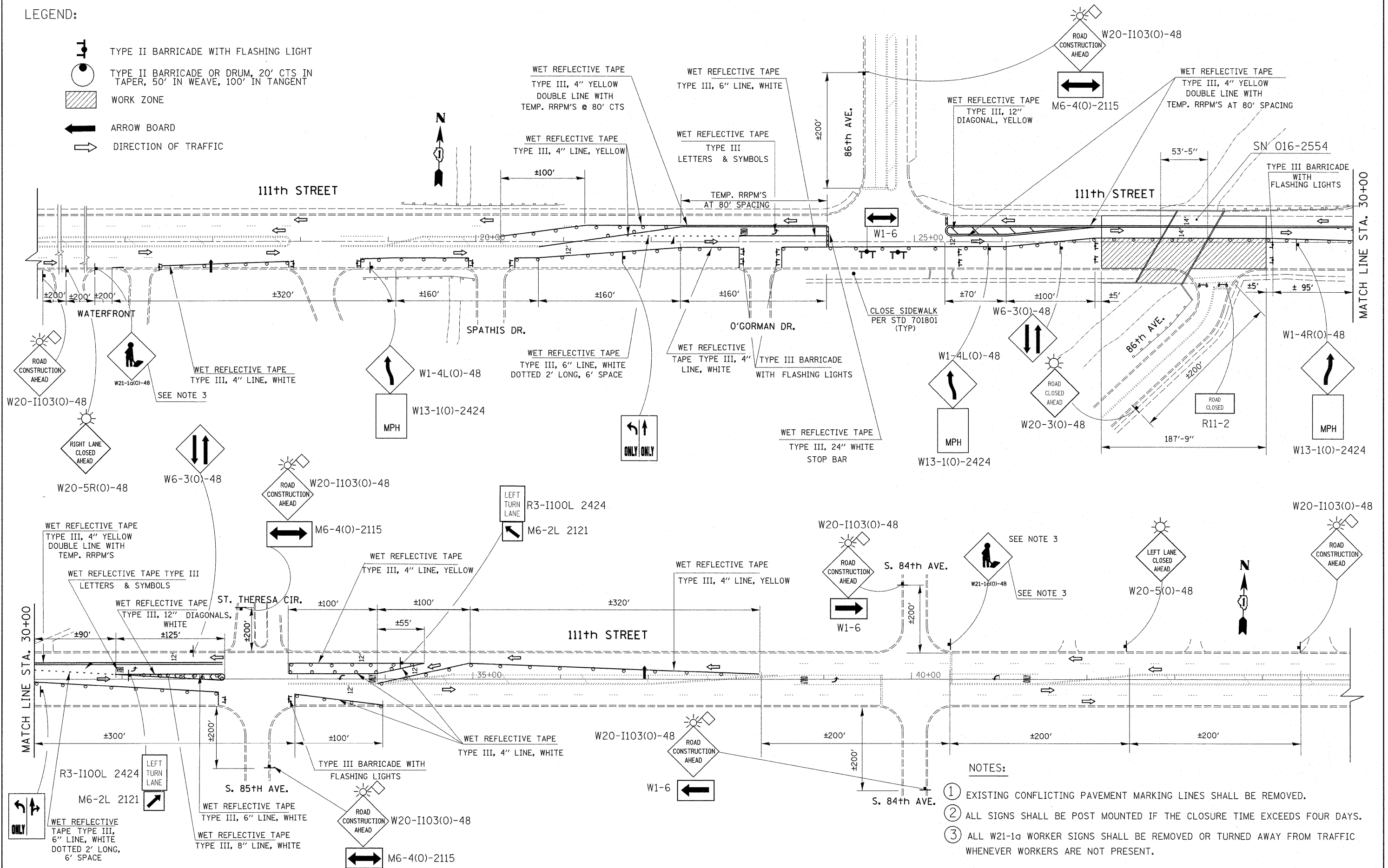


LEGEND:

- TYPE II BARRICADE WITH FLASHING LIGHT
- TYPE II BARRICADE OR DRUM, 20' CTS IN TAPER, 50' IN WEAVE, 100' IN TANGENT
- WORK ZONE
- ARROW BOARD
- DIRECTION OF TRAFFIC



- NOTES:
- ① EXISTING CONFLICTING PAVEMENT MARKING LINES SHALL BE REMOVED.
  - ② ALL SIGNS SHALL BE POST MOUNTED IF THE CLOSURE TIME EXCEEDS FOUR DAYS.
  - ③ ALL W21-1a WORKER SIGNS SHALL BE REMOVED OR TURNED AWAY FROM TRAFFIC WHENEVER WORKERS ARE NOT PRESENT.

FILE NAME =	USER NAME = gorengeautab	DESIGNED -	REVISED -	<b>STATE OF ILLINOIS DEPARTMENT OF TRANSPORTATION</b>	<b>111th ST OVER STONEY CREEK TRAFFIC CONTROL PLAN, STAGE I (S.N. 016-2554)</b>	F.A.U. RTE.	SECTION	COUNTY	TOTAL SHEETS	SHEET NO.	
ct:\pwork\pwork\dot\gorengeautab\d273896	D161711-sh-t-pln.dgn	DRAWN -	REVISED -			1581	I 355-B-I	COOK	23	12	
PLOT SCALE = 50.0000' / 1"		CHECKED -	REVISED -			CONTRACT NO. 60P80					
PLOT DATE = 10/8/2011		DATE -	REVISED -			ILLINOIS FED. AID PROJECT					