

INDEX OF SHEETS

- S1. General Plan and Elevation
- S2. General Notes, Index of Sheets & Total Bill of Material
- S3. Stage Construction Details
- S4. Temporary Concrete Barrier for Stage Construction
- S5. Top of Deck Elevations (1 of 2)
- S6. Top of Deck Elevations (2 of 2)
- S7. South Approach Slab Elevations
- S8. North Approach Slab Elevations
- S9. Deck Plan and Section
- S10. Parapet and Sidewalk Details
- S11. Preformed Joint Strip Seal
- S12. Drainage Scupper DS-12
- S13. Bridge Drainage System
- S14. South Approach Slab
- S15. North Approach Slab
- S16. Approach Slab Section and Details
- S17. Framing Plan
- S18. Structural Steel Details
- S19. Bearing Details
- S20. Cantilever Forming Brackets
- S21. South Abutment Plan and Elevation
- S22. South Abutment Details
- S23. North Abutment Plan and Elevation
- S24. North Abutment Details
- S25. Bar Splicer Assembly
- S26. Existing Bridge Plans (1 of 4)
- S27. Existing Bridge Plans (2 of 4)
- S28. Existing Bridge Plans (3 of 4)
- S29. Existing Bridge Plans (4 of 4)

STATION 950+00.00
 REBUILT 20 BY
 STATE OF ILLINOIS
 F.A.U. RTE. 2692 SEC. 1415B-1
 LOADING HL-93
 STRUCTURE NO. 016-0680

For Information Only

NAME PLATE
 See Std. 515001

Existing Name Plate shall be cleaned and relocated next to new Name Plate. Cost included with Name Plates. See Sheet S1 for Name Plate location.

- - This work is not included in the fabrication contract and is provided for information only.
- - This work is not in the fabrication contract and sheet is not included in these plans.

These plans are for the fabrication of the structural steel and bearings. All work shown that is not related to the fabrication is for information only. It is not included in this contract, and is identified as "Not Included in this Contract" or "For Information only"

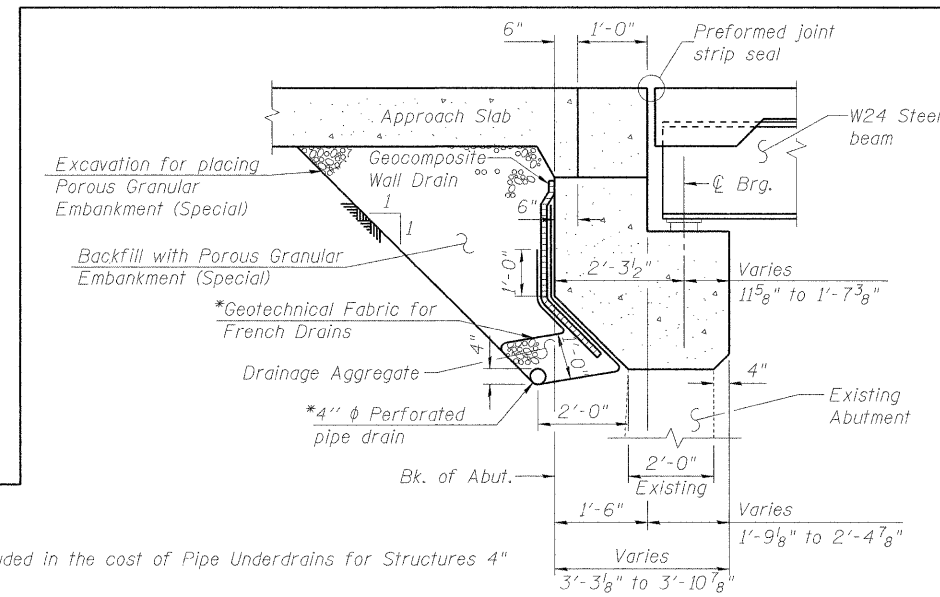
TOTAL BILL OF MATERIAL

ITEM	UNIT	SUPER	SUB	TOTAL
Furnishing Structural Steel	L Sum	1		1
Storage of Structural Steel	Cal Day	120		120
Furnishing Elastomeric Bearing Assembly, Type I	Each	12		12
Storage of Elastomeric Bearing Assemblies	Cal Day	120		120

GENERAL NOTES

1. Fasteners shall be AASHTO M164 Type 1, mechanically galvanized bolts. Bolts $\frac{3}{4}$ in. ϕ , holes $\frac{15}{16}$ in. ϕ , unless otherwise noted.
2. Calculated weight of Structural Steel (M270, Grade 50) = 117,240 lbs.
 Calculated weight of Structural Steel (M270, Grade 36) = 11,770 lbs.
3. No field welding is permitted except as specified in the contract documents.
- 4. Reinforcement bars shall conform to the requirements of ASTM A 706 Gr 60. See Special Provisions.
- 5. Reinforcement bars designated (E) shall be epoxy coated.
- 6. Plan dimensions and details relative to existing plans are subject to nominal construction variations. The Contractor shall field verify existing dimensions and details affecting new construction and make necessary approved adjustments prior to construction or ordering of materials. Such variations shall not be cause for additional compensation for a change in scope of the work, however, the Contractor will be paid for the quantity actually furnished at the unit price bid for the work.
- 7. Concrete Sealer shall be applied to the designated areas of the exposed surface of the new abutment caps and backwalls.
8. The Organic Zinc Rich Primer / Epoxy / Urethane Paint System shall be used for painting of new structural steel except where otherwise noted. The entire system shall be shop applied, with the exception that masked off connection surfaces, field installed fasteners and damaged areas shall be touched up in the field. The color of the final finish coat for all interior steel surfaces shall be Gray, Munsell No. 5B 7/1. The color of the final finish coat for the exterior and bottom flange of the fascia beams shall be Reddish Brown (Munsell No. 2.5YR 3/4). See Special Provision for "Cleaning and Painting New Metal Structures".
- 9. Slipforming of parapets is not allowed.

For Information Only



SECTION THRU ABUTMENT

(Horiz. dim. @ Rt. L's)

Note:
 All drainage system components shall extend parallel 2'-0" beyond the ends of the abutment. At 2'-0" beyond the abutment ends, an outlet pipe shall extend into the retaining walls. The retaining walls shall be cored to accept the outlet pipe. This work shall be included in the pay item for Pipe Underdrains for Structures 4".

*Included in the cost of Pipe Underdrains for Structures 4"

FILE NAME = g:\projects\2102155_003\roads\structure\sh\0160680-60R35-2082-General Notes.dgn



USER NAME = 2sayerb	DESIGNED - BPS	REVISED -
	CHECKED - BHS	REVISED -
PLOT SCALE = N/A	DRAWN - BPS	REVISED -
PLOT DATE = 10/15/2011	CHECKED - BHS	REVISED -

STATE OF ILLINOIS
 DEPARTMENT OF TRANSPORTATION

GENERAL NOTES
 S.N. 016-0680

SHEET NO. S2 OF 29 SHEETS

F.A.U. RTE. 2692	SECTION 2011-205-F	COUNTY COOK	TOTAL SHEETS 17	SHEET NO. 4
CONTRACT NO. 60R35				
ILLINOIS FED. AID PROJECT				