

STATE OF ILLINOIS
DEPARTMENT OF TRANSPORTATION

ROUTE NO.	SECTION	COUNTY	TOTAL SHEETS	SHEET	SHEET NO. 9
FAP 305	*	Cook	72	67	14 SHEETS
FED. ROAD DIST. NO. 7	ILLINOIS	FED. AID PROJECT-			
Contract No. 62853			*2004-108 BR		

NOTES

Railing shall be according to Section 509 of the Standard Specifications, except as noted, and will be paid for at the Contract Unit Price per foot for Pedestrian Railing.

Hollow structural sections shall conform to the requirements of ASTM designation A 500, Grade B, structural steel tubing.

All other steel shapes and plates shall conform to the requirements of AASHTO M 270 Grade 36.

If the option of drilling and epoxy grouting the anchor rods is chosen, the Contractor shall use the capsule or the adhesive cartridge type anchor rods that have been previously tested and given a prior approval by the Department. The Contractor shall install these anchor rods in pre-drilled holes according to the manufacturer's recommendations and procedures. The capsule or the adhesive cartridge shall be sealed with pre-measured amounts of the adhesive chemical.

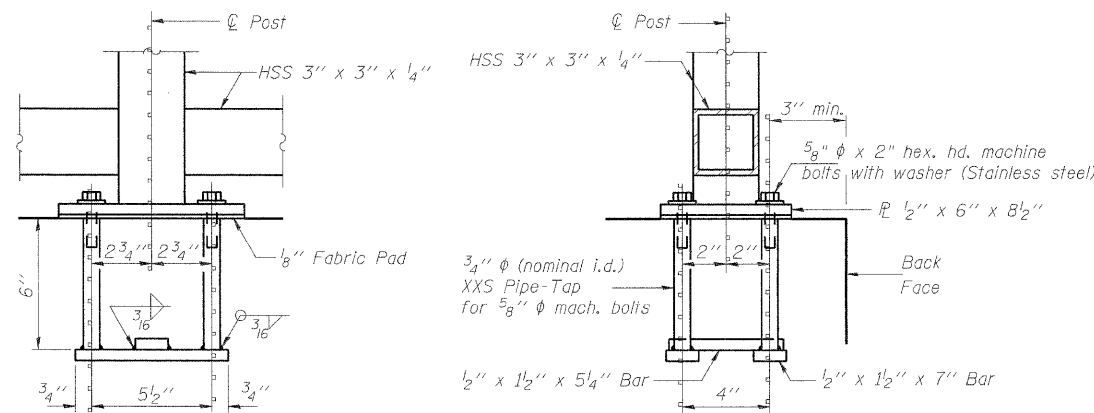
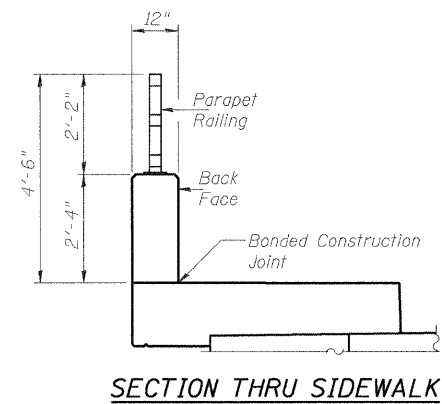
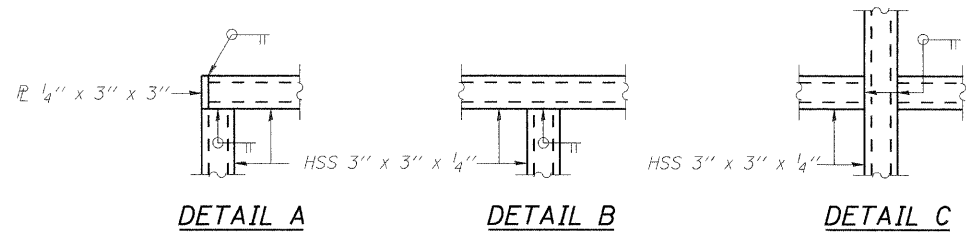
Space reinforcement to miss anchor rods.

All posts, railing, splices anchor devices, and bent plates shall be galvanized after shop fabrication according to AASHTO M 111 and ASTM A 385. All bolts, nuts, washers, and anchor rods shall be galvanized according to AASHTO M 232 except stainless steel bolts as noted.

Vent holes for galvanized shall be placed in the posts and rails at locations that will not allow the accumulation of moisture in the members.

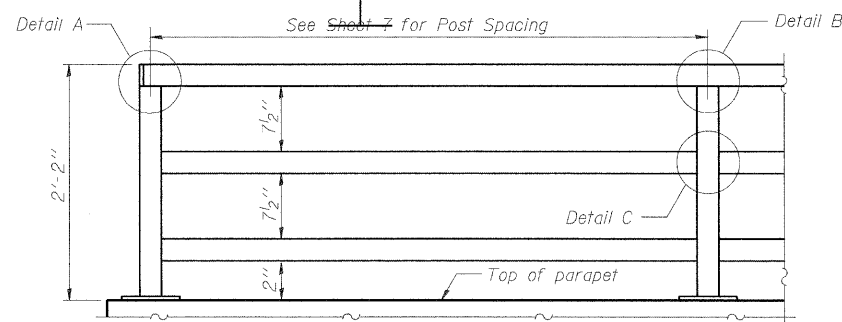
BILL OF MATERIAL

ITEM	UNIT	QUANTITY
Pedestrian Railing	Foot	135

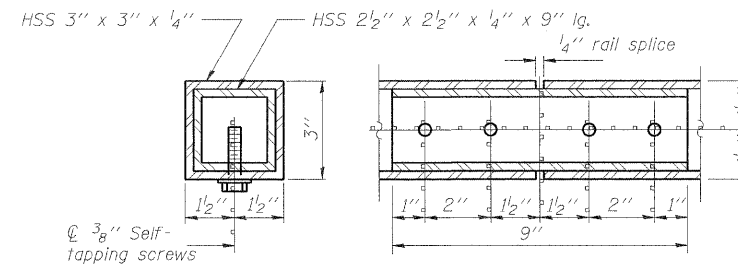
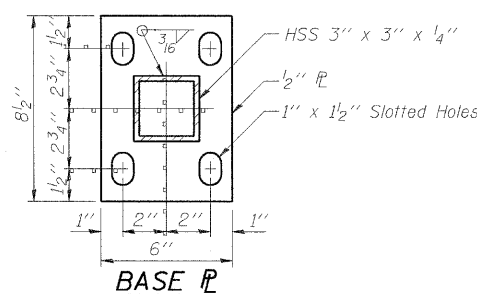


ANCHOR BOLT DETAILS
In lieu of the cast-in-place anchor device shown, the Contractor has the option of drilling and epoxy grouting 5/8" φ anchor rods. Embedment shall be according to the manufacturer's specifications.

Sheet S7 of 29



PARAPET RAILING ELEVATION
(Inside Face of Three Element Rail)



RAIL SPLICE

DESIGNED	BPS
CHECKED	KFA
DRAWN	BPS
CHECKED	GSP

R-29 (Modified) 9-01-03 (10'-0" Maximum Post Spacing)

PEDESTRIAN RAILING
WOLF RD. OVER PALATINE RD.
F.A.P. RTE. 305 SECT. 2004-108 BR
COOK COUNTY
STATION 950+00.00
STRUCTURE NO. 016-0680

FILE NAME = g:\projects\2102195_001\veed\structure\shs\0160680-02-Existing_Adgn

AMERICAN CONSULTING ENGINEERS
CONSULTING ENGINEERS & PLANNERS
CHICAGO, ILLINOIS

USER NAME = zpiend	DESIGNED - BPS	REVISED -
PLOT SCALE = N/A	CHECKED - BHS	REVISED -
PLOT DATE = 9/12/2011	DRAWN - BPS	REVISED -
	CHECKED - BHS	REVISED -

STATE OF ILLINOIS
DEPARTMENT OF TRANSPORTATION

EXISTING BRIDGE PLANS (4 OF 4)
S.N. 016-0680

SHEET NO. S29 OF 29 SHEETS

F.A.U. RTE. 2692	SECTION 2011-205-F	COUNTY COOK	TOTAL SHEETS 17	SHEET NO. 17
				CONTRACT NO. 60R35
ILLINOIS FED. AID PROJECT				

FOR INFORMATION ONLY