

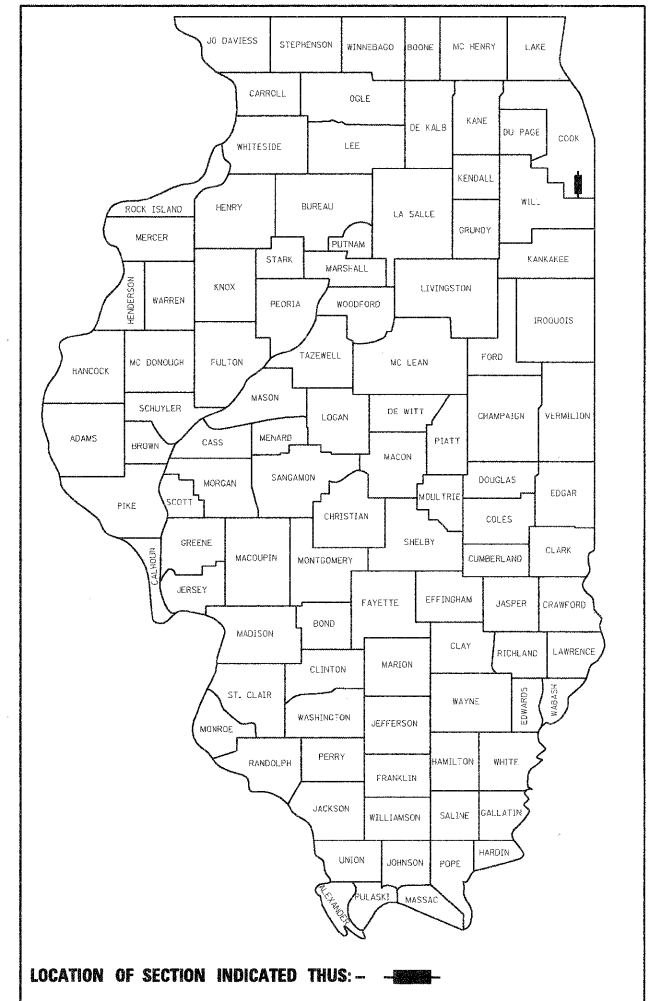
F.A.U. RTE.	SECTION	COUNTY	TOTAL SHEETS	SHEET NO.
2845	2011-206-F	COOK	18	1
		ILLINOIS	CONTRACT NO. 60R36	

D-91-072-12

FOR INDEX OF SHEETS, SEE SHEET NO. 2  
\*\*\*\*\*

STATE OF ILLINOIS  
DEPARTMENT OF TRANSPORTATION  
DIVISION OF HIGHWAYS  
**PROPOSED  
HIGHWAY PLANS**

**FAU ROUTE 2845 – WESTERN AVENUE (SN 016-0772)  
OVER BUTTERFIELD CREEK  
SECTION 2011-206-F  
PROJECT: ACIM-2845(006)  
COOK COUNTY  
BEAM AND BEARING FABRICATION  
C-91-072-12**



LOCATION OF SECTION INDICATED THIS: - [black rectangle] -

TRAFFIC DATA  
\*\*\*\*\*

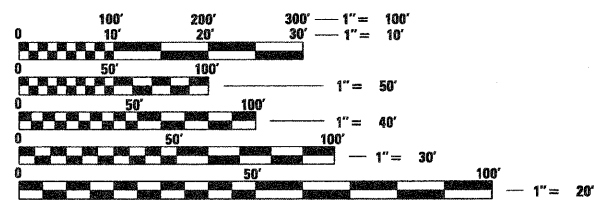
WESTERN AVENUE

EXISTING ADT (2010) : 6,500

POSTED SPEED LIMIT : 35 MPH

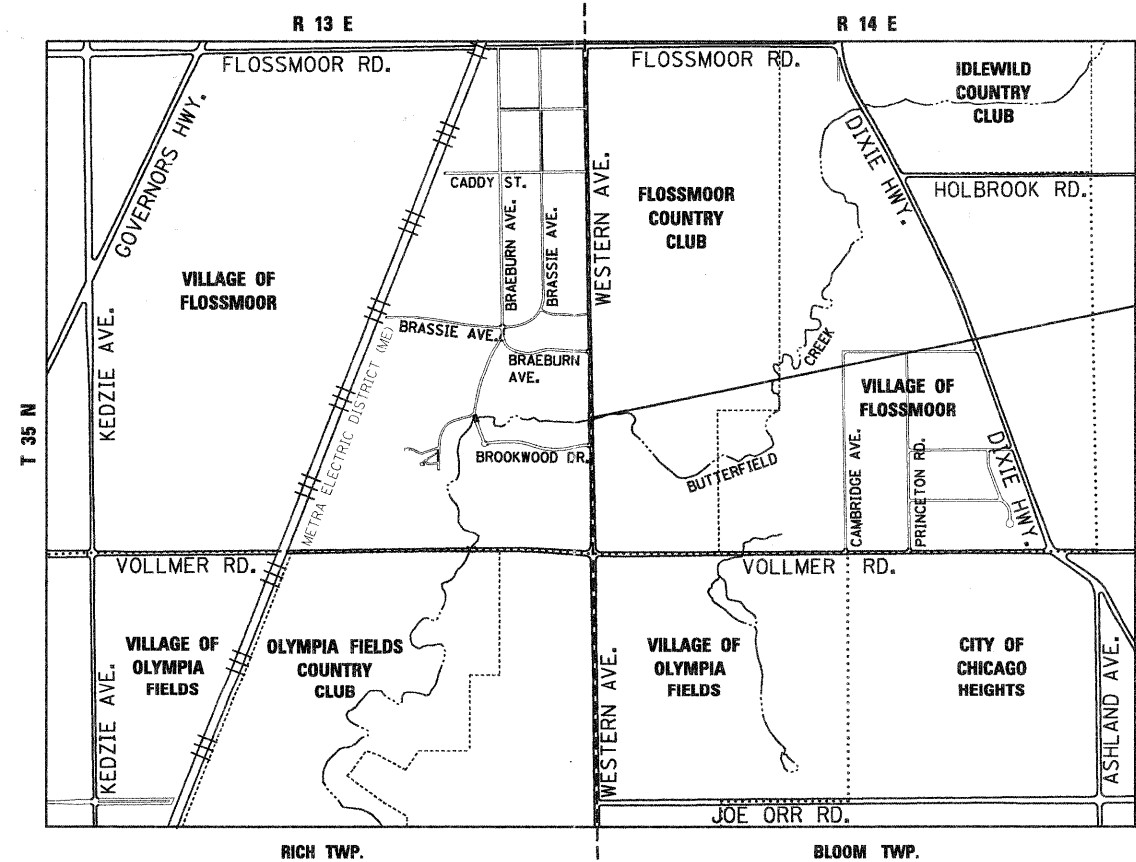
DESIGN SPEED : 40 MPH

IMPROVEMENT IS LOCATED IN THE VILLAGE OF FLOSSMOOR



FULL SIZE PLANS HAVE BEEN PREPARED USING STANDARD ENGINEERING SCALES. REDUCED SIZED PLANS WILL NOT CONFORM TO STANDARD SCALES. IN MAKING MEASUREMENTS ON REDUCED PLANS, THE ABOVE SCALES MAY BE USED.

J.U.L.I.E.  
JOINT UTILITY LOCATION INFORMATION FOR EXCAVATION  
1-800-892-0123  
OR 811



WESTERN AVE OVER BUTTERFIELD CREEK  
SN: 016-0772



THOMAS M. HEIN, P. E.  
IL. LIC. NO. 062-053199  
EXP 11-30-11  
DATE 9-12-11

PROJECT ENGINEER ROBERT BORO (847) 705-4237  
PROJECT MANAGER ISSAM RAYYAN

CONTRACT NO. 60R36



LOCATION MAP  
NOT TO SCALE  
GROSS LENGTH = 415 FT. = 0.079 MILE  
NET LENGTH = 415 FT. = 0.079 MILE

STATE OF ILLINOIS  
DEPARTMENT OF TRANSPORTATION  
DIVISION OF HIGHWAYS  
SUBMITTED SEPTEMBER 13, 2011  
Diana M. O'Keefe  
DEPUTY DIRECTOR OF HIGHWAYS, REGION ENGINEER  
October 14, 2011  
Scott E. Stitt, P.E.  
acting ENGINEER OF DESIGN AND ENVIRONMENT  
October 14, 2011  
Christine M. Reed  
DIRECTOR OF HIGHWAYS, CHIEF ENGINEER

PRINTED BY THE AUTHORITY OF THE STATE OF ILLINOIS