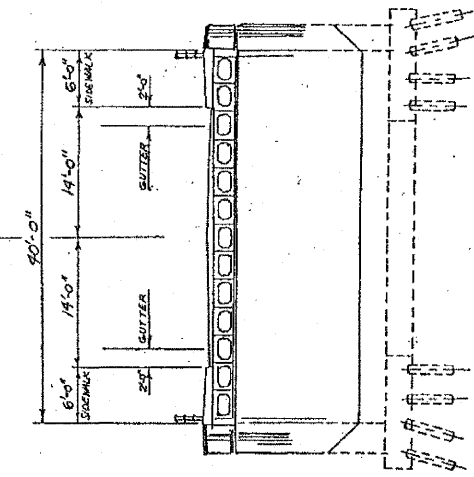
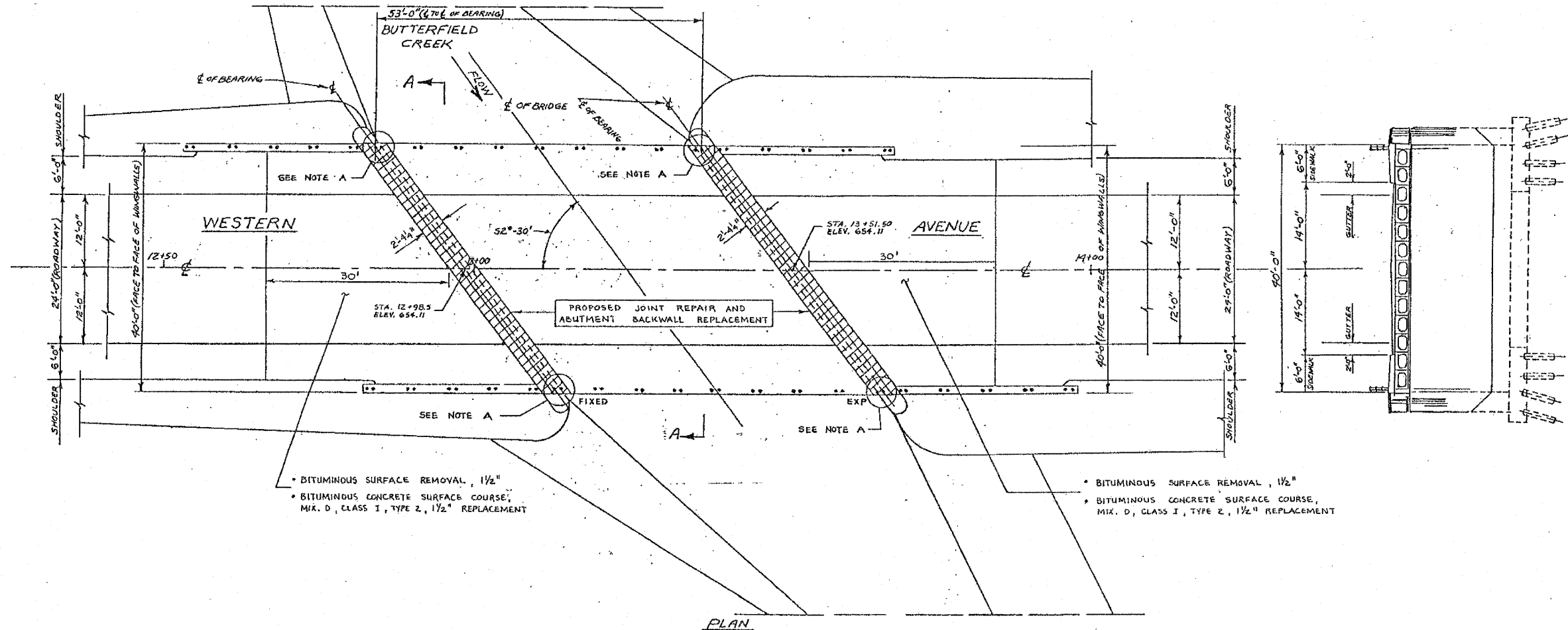
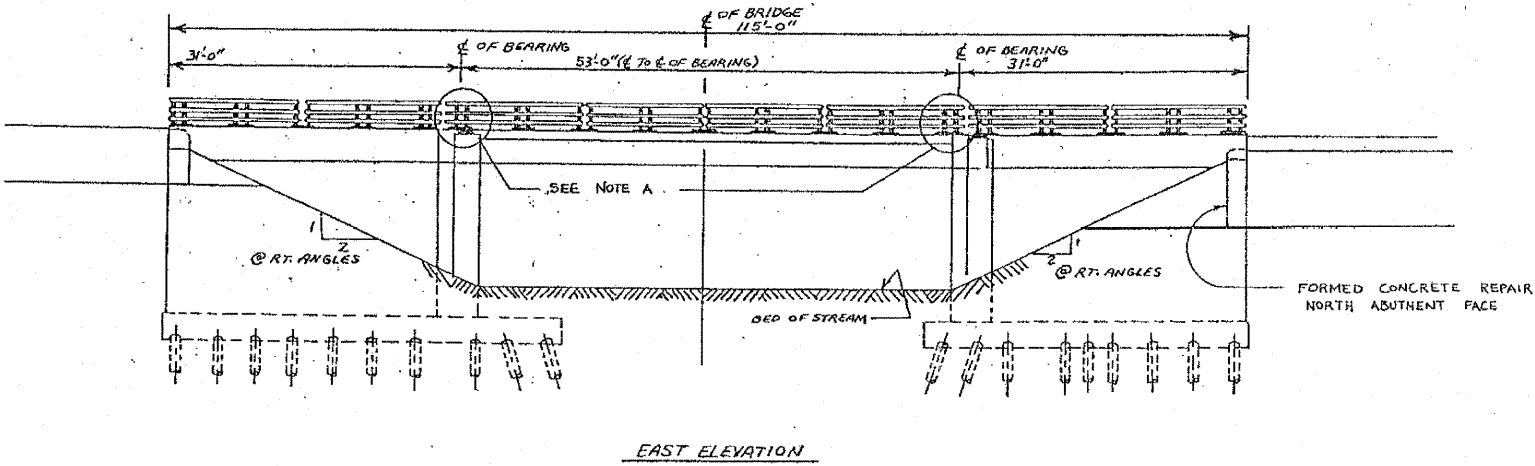


FILE NO.	SECTION	COUNTY	TOTAL SHEETS	SHEET NO.
2845	0605 I-DL	COOK	18	8
STA.	TO R/A			
FED. ROAD DIST. NO. 1	ALINDA	FED. AID PROJECT		



- BITUMINOUS SURFACE REMOVAL, 1 1/2"
- BITUMINOUS CONCRETE SURFACE COURSE, MIX. D, CLASS I, TYPE 2, 1 1/2" REPLACEMENT
- BITUMINOUS SURFACE REMOVAL, 1 1/2"
- BITUMINOUS CONCRETE SURFACE COURSE, MIX. D, CLASS I, TYPE 2, 1 1/2" REPLACEMENT



NOTE A: EXISTING RAIL TO BE REMOVED TEMPORARILY AND ANCHOR BOLTS SALVAGED IN NEW BONDED PREFORMED JOINT SYSTEM CONSTRUCTION.

FOR INFORMATION ONLY

REVISIONS	
NAME	DATE

SCALE: VERT. _____
 HORIZ. _____
 DATE _____

DRAWN BY _____
 CHECKED BY _____

ILLINOIS DEPARTMENT OF TRANSPORTATION
 GENERAL PLAN & ELEVATION
 WESTERN AVE.

APEX
 CONSULTING ENGINEERS, LLC
 111 E. Wacker Drive, Suite 500
 Chicago, IL 60601
 Phone (312) 977-0960 Fax (312) 977-0661

USER NAME =	DESIGNED -	REVISED
PLOT SCALE =	CHECKED -	REVISED
PLOT DATE = 10/13/2011	DRAWN -	REVISED
	CHECKED -	REVISED

STATE OF ILLINOIS
 DEPARTMENT OF TRANSPORTATION

EXISTING BRIDGE PLANS (1 OF 6)
 S.N. 016-0772

F.A.U. RTE.	SECTION	COUNTY	TOTAL SHEETS	SHEET NO.
2845	2011-206-F	COOK	18	13
CONTRACT NO. 60R36			[ILLINOIS] FED. AID PROJECT	

SHEET NO. S28 OF S33 SHEETS

FOR INFORMATION ONLY